



The UK Air Quality Forecasting Contract

Paul Willis

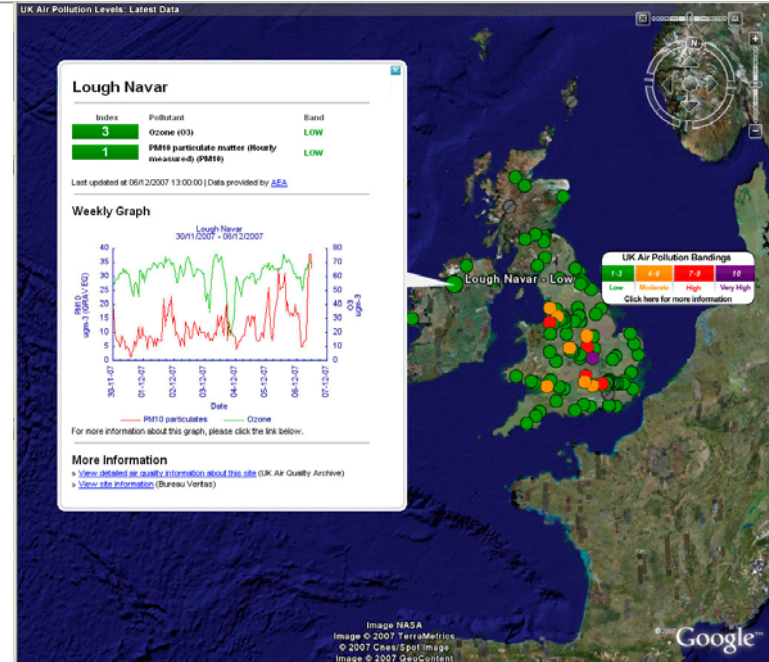
UK National Air Quality Forecasting Seminar
16th July 2009

Today's Presentation

- **Project background.**
- **Methodology.**
- **Future developments.**

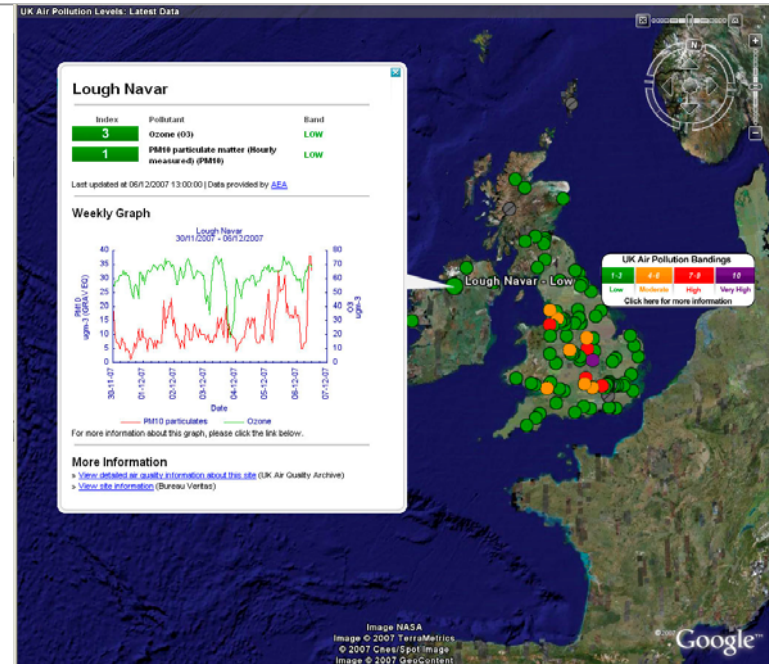
1. Project Background

- Defra and the Devolved Administrations require a daily UK Air Quality Forecast to both protect public health and to meet specific EC Directive Requirements.
- The Directive requires publication of:
 - The likely geographical extent of periods of high concentrations.
 - The expected change in pollution (improvement, stabilisation or deterioration) and reasons for those changes.
- Forecasts are disseminated via the internet (www.airquality.co.uk), media bulletins and a freephone information service (**0800 556677**).



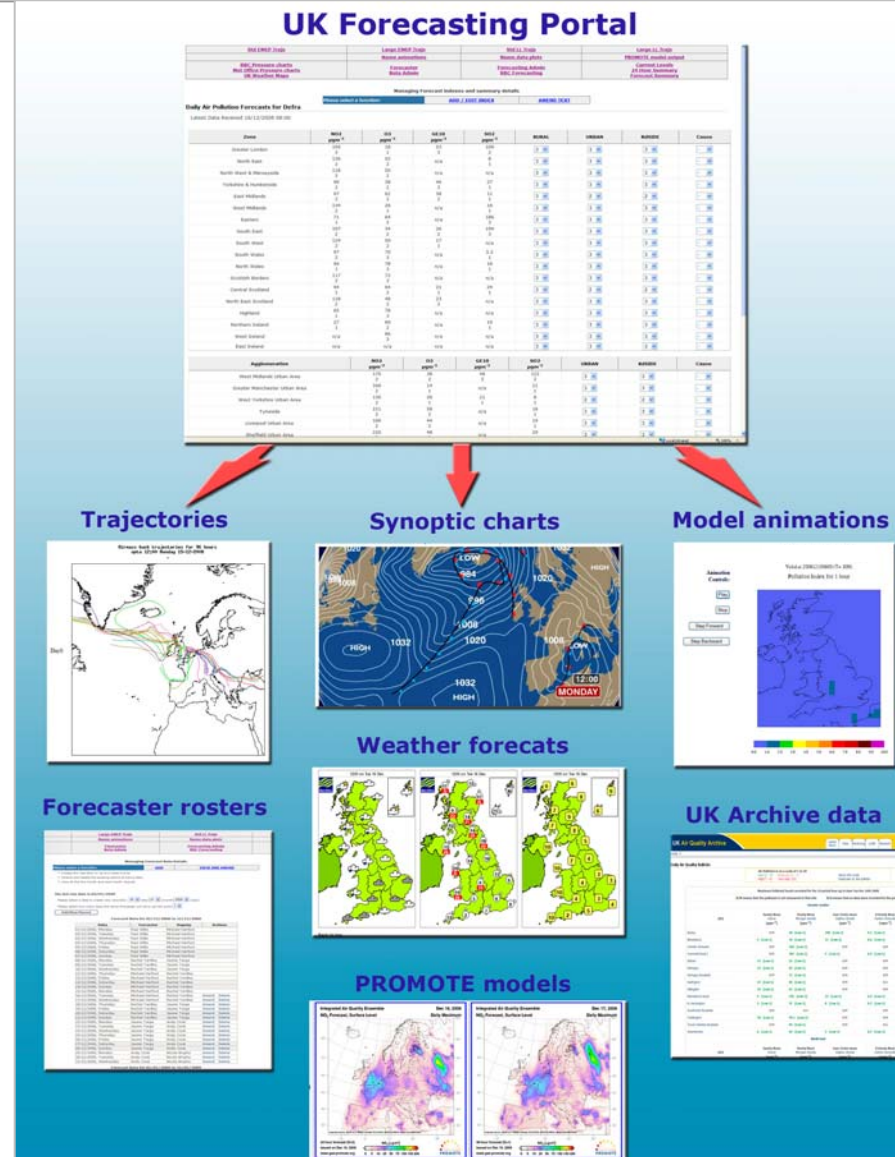
1. Project Background (cont'd)

- A new 3-year contract was let to AEA to provide these daily forecasts from April 2009.
- Other aspects of the contract are also covered through today's seminar, including the need to:
 - Keep abreast of advances in forecasting air quality and advise Defra and the DAs on possible approaches to improve the forecasts.
 - Enhance understanding of the value and role of air quality forecasting in air quality management and public information services.



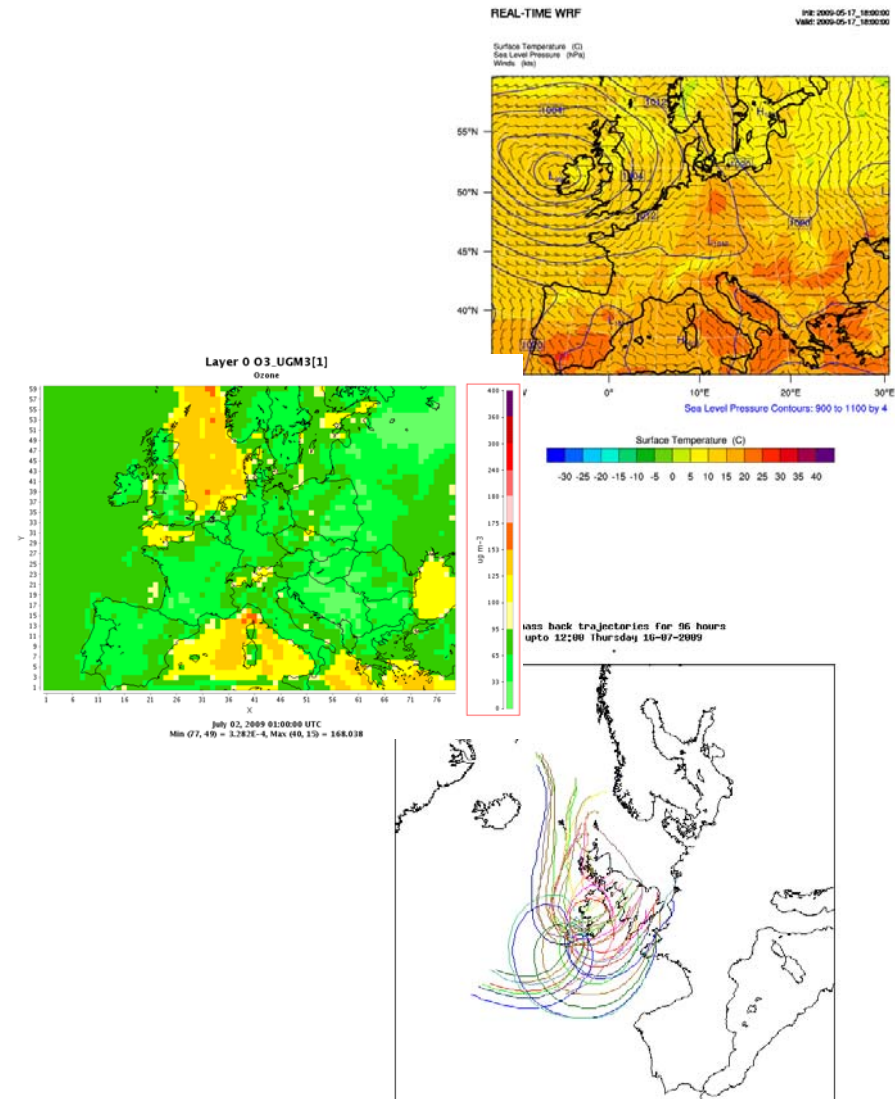
2. Methodology

- AEA's approach is to use a team of air quality experts to compile the forecasts based on a portfolio of inputs.
- The team use a daily forecasting protocol and a web-based portal to deliver forecasts 365 days a year.
- The inputs include:
 - UK optimised AQ forecasting models.
 - Pan-European model results.
 - Latest UK & European monitoring data.
 - Weather forecasts.
 - Satellite imagery.
 - Expert judgement based on analyses of historical air pollution episodes.



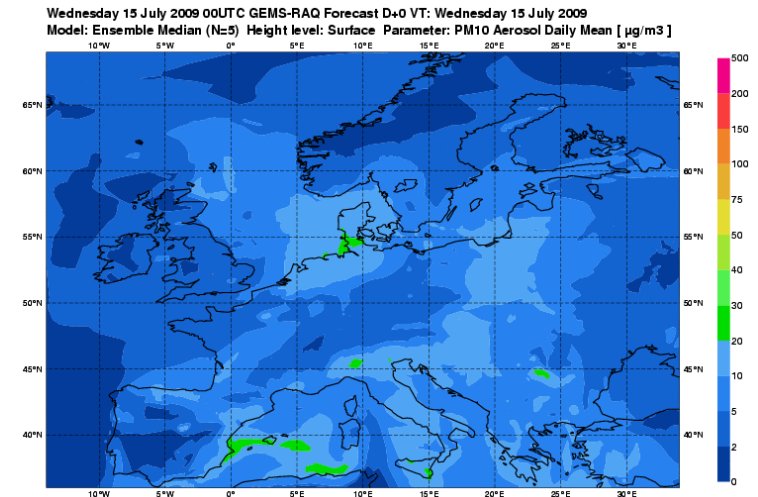
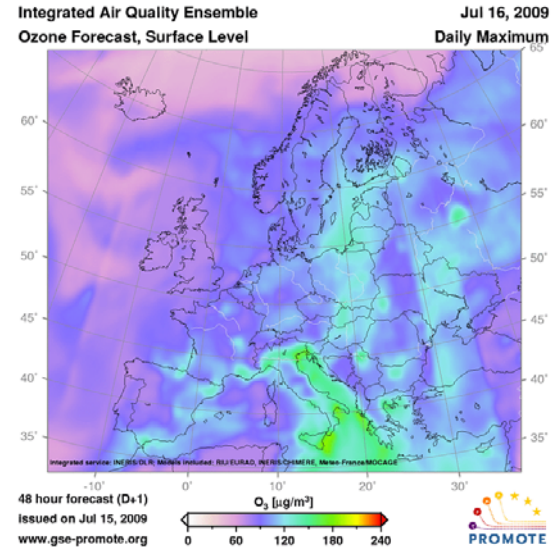
UK Air Quality Forecast Models

- AEA currently uses the WRF meteorological model coupled with the CMAQ Chemical Transport Model (CTM) in order to produce daily air quality forecasts for Ozone, PM₁₀, PM_{2.5}, NO₂, SO₂ and CO. PM_{2.5} is not yet formally part of the UK AQ Forecasting service.
- 96 hour air mass back-trajectories are automatically obtained from HYSPLIT each day for UK and cross-channel locations. To assist with source attribution of pollutants during long-range transport episodes.



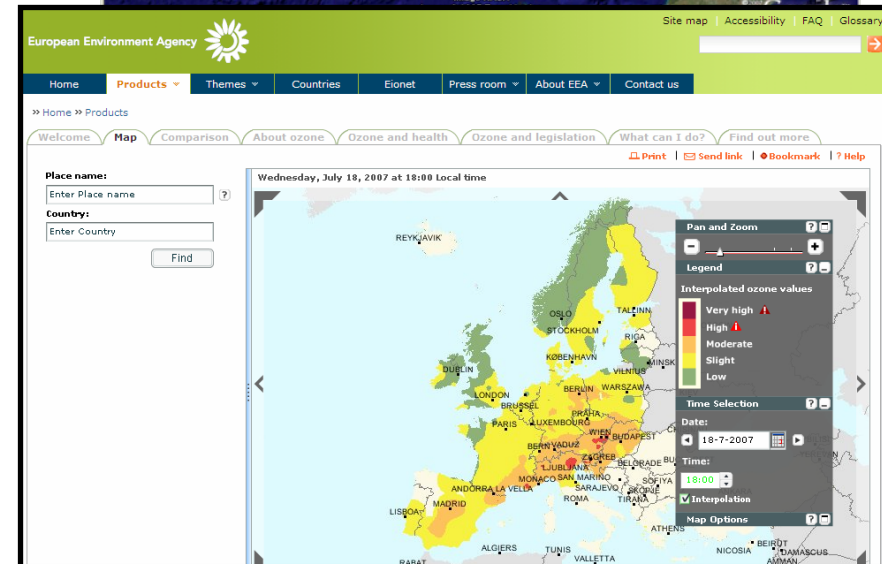
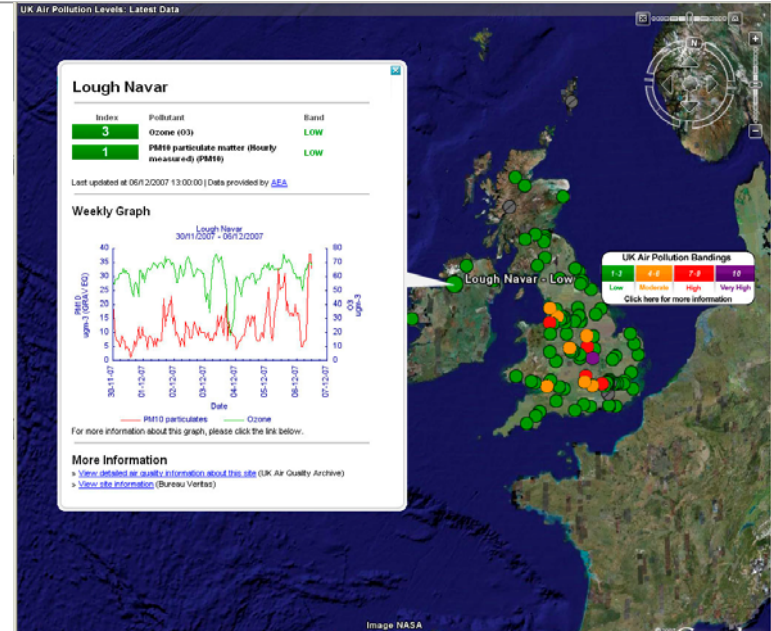
Other European Models / Ensembles

- The UK forecast is compared daily for consistency with the forecasts produced by other European groups.
- Especially important for pollutants with a significant long-range component such as Ozone and PM₁₀.
- But there maybe UK specific emissions or other factors to consider.
- PROMOTE and GEMS ensemble forecasts are the most useful.



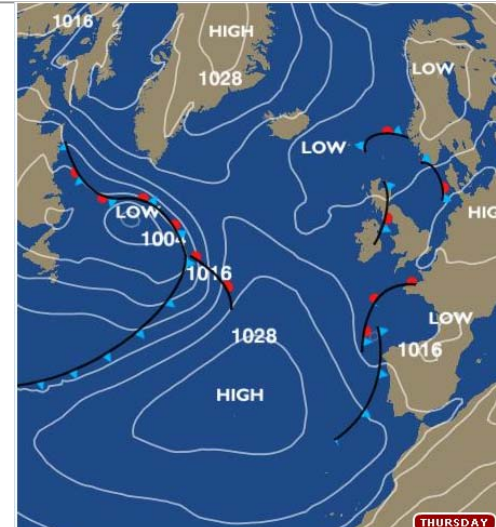
UK & European Current Air Quality Data

- Used to supplement models by providing a reality check against current levels.
- May indicate any unexpected divergence from forecasts which require more investigation.
- Plans to develop automated assimilation into the CTM runs to further optimise model performance.
- Can be used for near real-time model validation.



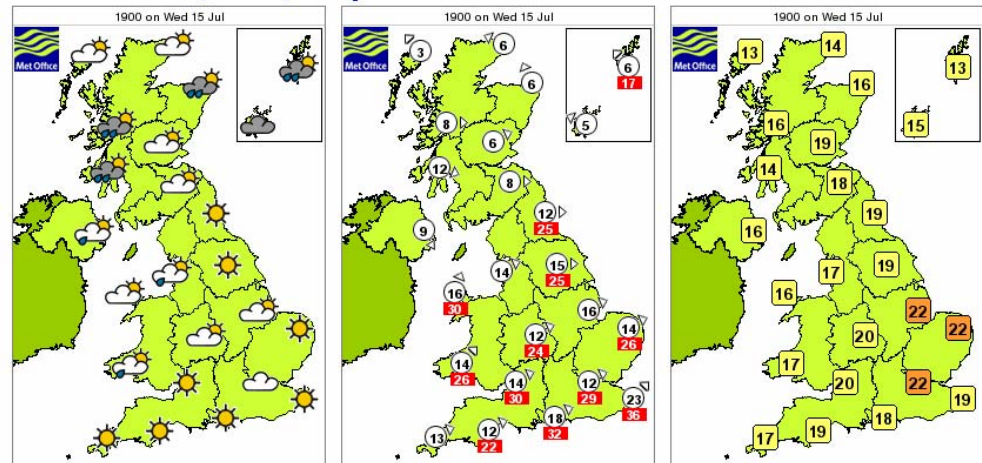
Weather Forecasts

- Latest weather forecasts may be 12 hours or more after those used to initiate the model runs so divergence from an earlier forecast is not unexpected.



[Go back to main page](#) | [Key to forecast](#) | [Print document](#) (landscape orientation recommended)

UK: forecast: weather, wind, temperature



- Again, a reality check and validation of the meteorological and CTM outputs.

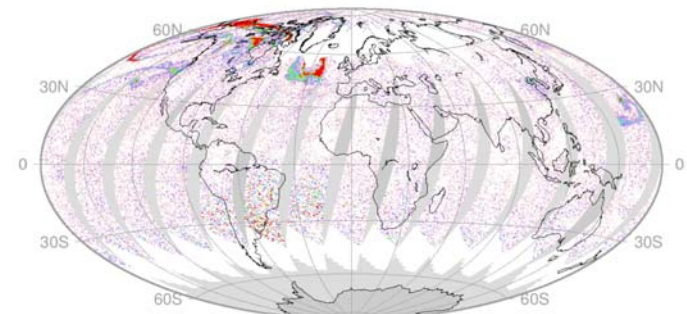
Satellite Imagery

- Useful for identifying the likely source of a pollution episode, or tracking the progress of any unusual events towards the UK.

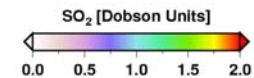


GOME-2 / MetOp
SO₂ Vertical Column Density

Jun 25, 2009



One-day Composite
Lv2 Version: GDP-4.3
<http://wdc.dlr.de>



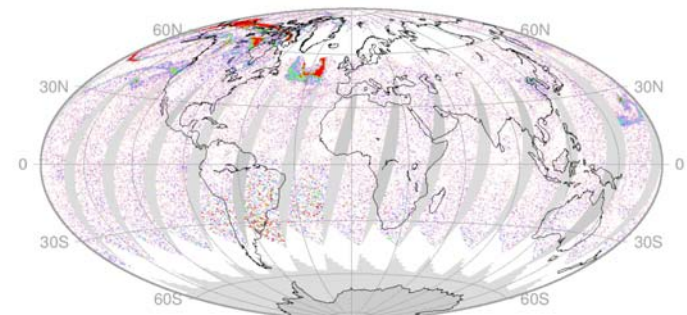
Satellite Imagery

- Useful for identifying the likely source of a pollution episode, or tracking the progress of any unusual events towards the UK.

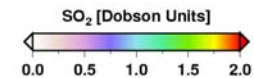


GOME-2 / MetOp
SO₂ Vertical Column Density

Jun 25, 2009



One-day Composite
Lv2 Version: GDP-4.3
<http://wdc.dlr.de>



Future Developments

- **Launch of the UK Air Quality Forecasting Forum today.**
- **We can work more closely together to ensure consistency and accuracy of national, regional and other forecasts issued in the UK.**
- **On-line forum will be set up to share ideas and all interested parties are invited to participate and meet regularly to discuss progress.**
 - **Enhanced graphical representations of the forecast outputs are currently being discussed with Defra and the DAs.**
 - **More detailed forecast accuracy statistics will be published on-line for public access.**
 - **Consideration of other models and developments to enhance the UK AQ Forecasting Service.**



Any Questions?

Paul Willis

paul.willis@aeat.co.uk

0870 190 6602