



Department  
for Environment  
Food & Rural Affairs



Department  
for Transport

# Air Quality Plan for tackling roadside nitrogen dioxide concentrations in East Midlands (UK0032)

July 2017



Scottish Government  
Riaghaltas na h-Alba  
gov.scot



Department of  
Agriculture, Environment  
and Rural Affairs  
[www.daera-ni.gov.uk](http://www.daera-ni.gov.uk)



Llywodraeth Cymru  
Welsh Government



© Crown copyright 2017

You may re-use this information (excluding logos) free of charge in any format or medium, under the terms of the Open Government Licence v.3. To view this licence visit [www.nationalarchives.gov.uk/doc/open-government-licence/version/3/](http://www.nationalarchives.gov.uk/doc/open-government-licence/version/3/) or email [PSI@nationalarchives.gsi.gov.uk](mailto:PSI@nationalarchives.gsi.gov.uk)

Any enquiries regarding this publication should be sent to us at:

[air.quality@defra.gsi.gov.uk](mailto:air.quality@defra.gsi.gov.uk)

[www.gov.uk/defra](http://www.gov.uk/defra)

## Contents

<b>1</b>	<b>Introduction</b>	<b>3</b>
1.1	This document . . . . .	3
1.2	Context . . . . .	3
1.3	Zone status . . . . .	3
1.4	Plan structure . . . . .	4
<b>2</b>	<b>General Information About the Zone</b>	<b>4</b>
2.1	Administrative information . . . . .	4
2.2	Assessment details . . . . .	7
2.3	Air quality reporting . . . . .	9
<b>3</b>	<b>Overall Picture for 2015 Reference Year</b>	<b>9</b>
3.1	Introduction . . . . .	9
3.2	Reference year: NO <sub>2</sub> _UK0032_Annual_1 . . . . .	9
<b>4</b>	<b>Measures</b>	<b>15</b>
4.1	Introduction . . . . .	15
4.2	Source apportionment . . . . .	15
4.3	Measures . . . . .	15
4.4	Measures timescales . . . . .	17
<b>5</b>	<b>Baseline Model Projections</b>	<b>17</b>
5.1	Overview of model projections . . . . .	17
5.2	Baseline projections: NO <sub>2</sub> _UK0032_Annual_1 . . . . .	17
	<b>Annexes</b>	<b>23</b>
A	References . . . . .	23
B	Source apportionment graphs . . . . .	24
C	Tables of measures . . . . .	26

# 1 Introduction

## 1.1 This document

This document is the East Midlands non-agglomeration zone (UK0032) updated air quality plan for tackling roadside nitrogen dioxide (NO<sub>2</sub>) concentrations. This is an update to the air quality plan published in December 2015 (<https://www.gov.uk/government/collections/air-quality-plan-for-nitrogen-dioxide-no2-in-uk-2015>).

This plan presents the following information:

- General information regarding the East Midlands non-agglomeration zone
- Details of NO<sub>2</sub> exceedance situation within the East Midlands non-agglomeration zone
- Details of local air quality measures that have been implemented, will be implemented or are being considered for implementation in this non-agglomeration zone

This air quality plan for the East Midlands non-agglomeration zone should be read in conjunction with the separate UK Air Quality Plan for tackling roadside nitrogen dioxide concentrations (hereafter referred to as the overview document) which sets out, amongst other things, the authorities responsible for delivering air quality improvements and the list of UK and national measures that are applied in some or all UK zones. The measures presented in this zone plan, and the accompanying UK overview document show how the UK will ensure that compliance with the NO<sub>2</sub> limit values is achieved in the shortest possible time.

This plan should also be read in conjunction with the supporting UK Technical Report which presents information on assessment methods, input data and emissions inventories used in the analysis presented in this plan.

## 1.2 Context

Two NO<sub>2</sub> limit values for the protection of human health have been set in the Air Quality Directive (2008/50/EC). These are:

- The annual mean limit value: an annual mean concentration of no more than 40  $\mu\text{g}\text{m}^{-3}$
- The hourly limit value: no more than 18 exceedances of 200  $\mu\text{g}\text{m}^{-3}$  in a calendar year

The Air Quality Directive stipulates that compliance with the NO<sub>2</sub> limit values will be achieved by 01/01/2010.

## 1.3 Zone status

The assessment undertaken for the East Midlands non-agglomeration zone indicates that the annual limit value was exceeded in 2015 but is likely to be achieved by 2024 through the introduction of measures included in the baseline. When combined with the measures outlined in the overview document for the UK we expect this zone to be compliant by 2020.

## 1.4 Plan structure

General administrative information regarding this non-agglomeration zone is presented in Section 2.

Section 3 then presents the overall picture with respect to NO<sub>2</sub> levels in this non-agglomeration zone for the 2015 reference year of this air quality plan. This includes a declaration of exceedance situations within the non-agglomeration zone and presentation of a detailed source apportionment for each exceedance situation.

An overview of the measures already taken and to be taken within the non-agglomeration zone both before and after 2015 is given in Section 4.

Baseline modelled projections for each year from 2017 to 2030 for each exceedance situation are presented in Section 5. The baseline projections presented here include, where possible, the impact of measures that have already been taken and measures for which the relevant authority has made a firm commitment to implement. However, it has not been possible to quantify the impact of all the measures. This section therefore also explains which measures have been quantified, and hence included in the model projections, and which measures have not been quantified.

# 2 General Information About the Zone

## 2.1 Administrative information

Zone name: East Midlands

Zone code: UK0032

Type of zone: non-agglomeration zone

Reference year: 2015

Extent of zone: Figure 1 shows the area covered by the East Midlands non-agglomeration zone.

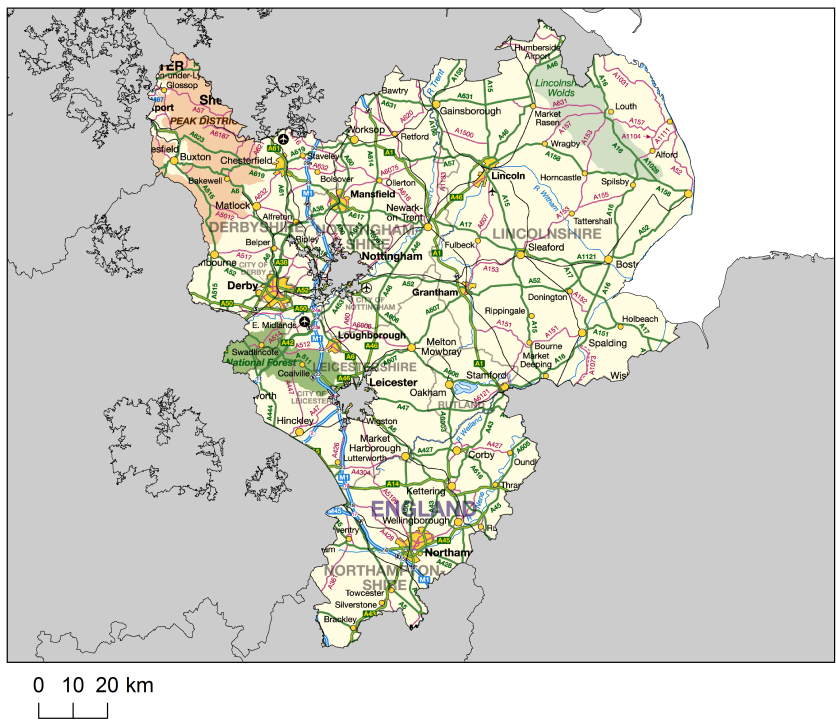
Local Authorities within the zone: Figure 2 shows the location of Local Authorities within the non-agglomeration zone. A list of these Local Authorities is also given below. The numbers in the list correspond to the numbers in Figure 2.

1. Amber Valley Borough Council
2. Ashfield District Council
3. Bassetlaw District Council
4. Blaby District Council
5. Bolsover District Council
6. Boston Borough Council
7. Broxtowe Borough Council
8. Charnwood Borough Council
9. Chesterfield Borough Council
10. Corby Borough Council
11. Daventry District Council

12. Derby City Council
13. Derbyshire Dales District Council
14. East Lindsey District Council
15. East Northamptonshire Council
16. Erewash Borough Council
17. Gedling Borough Council
18. Harborough District Council
19. High Peak Borough Council
20. Hinckley and Bosworth Borough Council
21. Kettering Borough Council
22. Leicester City Council
23. Lincoln City Council
24. Mansfield District Council
25. Melton Borough Council
26. Newark and Sherwood District Council
27. North East Derbyshire District Council
28. North Kesteven District Council
29. North West Leicestershire District Council
30. Northampton Borough Council
31. Nottingham City Council
32. Oadby & Wigston District Council
33. Rushcliffe Borough Council
34. Rutland County Council
35. South Derbyshire District Council
36. South Holland District Council
37. South Kesteven District Council
38. South Northamptonshire Council
39. Wellingborough Borough Council
40. West Lindsey District Council

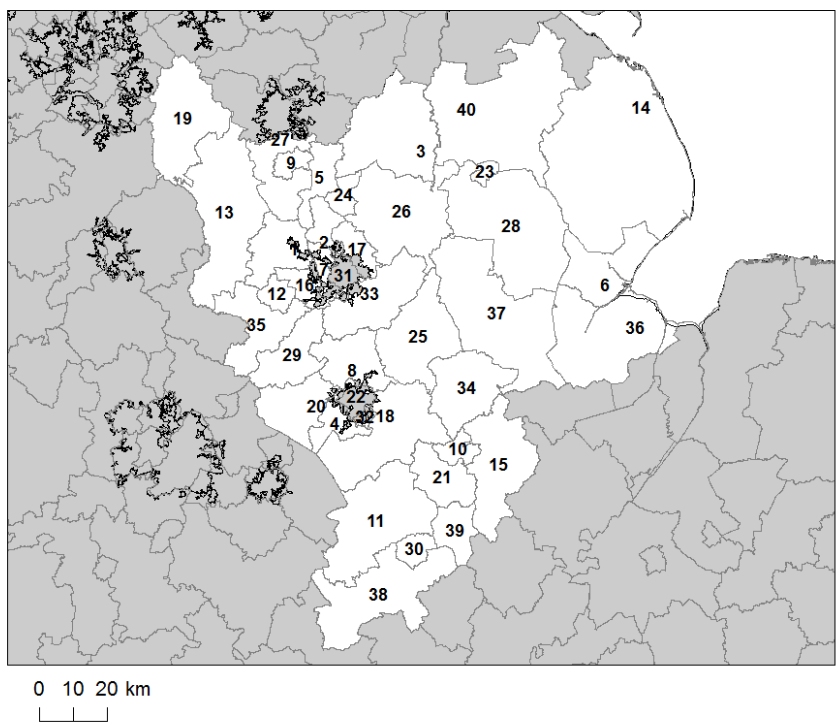
(Note: Local Authority boundaries do not necessarily coincide with zone boundaries. Hence Local Authorities may be listed within more than one zone plan.)

**Figure 1: Map showing the extent of the East Midlands non-agglomeration zone (UK0032).**



© Crown copyright. All rights reserved Defra, License number 100022861 [2017]

**Figure 2: Map showing Local Authorities within the East Midlands non-agglomeration zone (UK0032).**



© Crown copyright. All rights reserved Defra, License number 100022861 [2017]

## 2.2 Assessment details

### Measurements

NO<sub>2</sub> measurements in this zone were available in 2015 from the following national network monitoring stations (NO<sub>2</sub> data capture<sup>1</sup> for each station in 2015 shown in brackets):

1. Chesterfield Roadside GB0928A (95%)
2. Ladybower GB0037R (4%)
3. Lincoln Canwick Rd. GB1014A (99%)
4. Market Harborough GB0838A (94%)
5. Northampton Kingsthorpe GB1019A (93%)
6. Chesterfield Loundsley Green GB1046A (65%)

Full details of monitoring stations within the East Midlands non-agglomeration zone are available from <http://uk-air.defra.gov.uk/networks/network-info?view=aurn>.

### Modelling

Modelling for the 2015 reference year has been carried out for the whole of the UK. This modelling covers the following extent within this zone:

- Total background area within zone (approx): 15,458 km<sup>2</sup>
- Total population within zone (approx): 3,503,120 people

### Zone maps

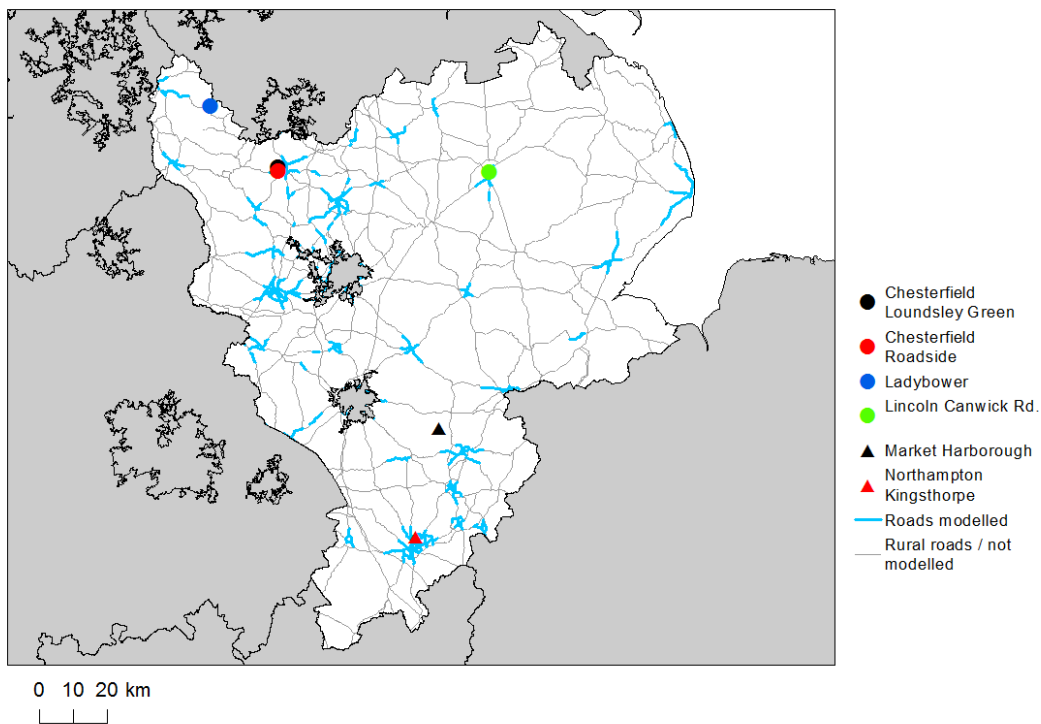
Figure 3 presents the location of the NO<sub>2</sub> monitoring stations within this zone for 2015 and the roads for which NO<sub>2</sub> concentrations have been modelled. NO<sub>2</sub> concentrations at background locations have been modelled across the entire zone at a 1 km x 1 km resolution.

---

<sup>1</sup>Annual data capture is the proportion of hours in a year for which there are valid measurements at a monitoring station, expressed in this document as a percentage. The Implementing Provisions on Reporting (IPR) guidance requires that a minimum data capture of 85% is required for compliance reporting (that is 90% valid data, plus a 5% allowance for data loss due to planned maintenance and calibration). Monitoring stations with at least 75% data capture have been included in the modelling analysis to ensure that a greater number of operational monitoring sites have been used for model calibration and verification purposes. For more information on compliance reporting under European Directives see Section 2.3.



Figure 3: Map showing the location of the NO<sub>2</sub> monitoring stations with valid data in 2015 and roads where concentrations have been modelled within the East Midlands (UK0032) non-agglomeration zone.



© Crown copyright. All rights reserved Defra, License number 100022861 [2017]

## 2.3 Air quality reporting

From 2001 to 2012 the UK has reported annually on air quality concentrations using a standard Excel questionnaire (Decision 2004/461/EC). These questionnaires are available online from <http://cdr.eionet.europa.eu/gb/eu/annualair>. Since 2013 reporting has been via an e-reporting system (Decision 2011/850/EU) <http://cdr.eionet.europa.eu/gb/eu/>.

In addition, the UK has reported on air quality plans and programmes (Decision 2004/224/EC) since 2003. The most recent previous UK air quality plan for nitrogen dioxide was published in 2015. The plan and supporting documents are available at <https://www.gov.uk/government/collections/air-quality-plan-for-nitrogen-dioxide-no2-in-uk-2015> and the submission of this plan via e-reporting is published at <http://cdr.eionet.europa.eu/gb/eu/aqd/h/envvryhbq/>. Historic plans and programmes are available on <http://cdr.eionet.europa.eu/gb/eu/aqpp>.

# 3 Overall Picture for 2015 Reference Year

## 3.1 Introduction

There are two limit values for the protection of health for NO<sub>2</sub>. These are:

- The annual limit value (annual mean concentration of no more than 40 µgm<sup>-3</sup>)
- The hourly limit value (no more than 18 hourly exceedances of 200 µgm<sup>-3</sup> in a calendar year)

Within the East Midlands non-agglomeration zone the annual limit value was exceeded in 2015. Hence, one exceedance situation for this zone has been defined, NO<sub>2</sub>\_UK0032\_Annual\_1, which covers exceedances of the annual limit value. This exceedance situation is described below.

## 3.2 Reference year: NO<sub>2</sub>\_UK0032\_Annual\_1

The NO<sub>2</sub>\_UK0032\_Annual\_1 exceedance situation covers all exceedances of the annual mean limit value in the East Midlands non-agglomeration zone in 2015.

Compliance with the annual limit value in this exceedance situation has been assessed using a combination of air quality measurements and modelling. Table 1 presents measured annual concentrations at national network stations in this exceedance situation since the 1st Daughter Directive (1999/30/EC) came into force in 2001. This shows that there were no measured exceedances of the annual limit value in this zone in 2015. Table 2 summarises modelled annual mean NO<sub>2</sub> concentrations in this exceedance situation for the same time period. This table shows that, in 2015, 47.7 km of road length was modelled to exceed the annual limit value. There were no modelled background exceedances of the annual limit value. The maximum measured concentration in the zone varies due to changes in emissions and varying meteorology in different years. However, the models are also updated each year to take into account the most up-to-date science, so the modelled results for different years may not be directly comparable. Maps showing the modelled annual mean NO<sub>2</sub> concentrations for 2015 at background and at roadside locations are presented in Figures 4 and 5 respectively. All modelled exceedances of the annual limit value are coloured orange or red in the maps.

The modelling carried out for this exceedance situation has also been used to determine the annual mean NO<sub>x</sub> source apportionment for all modelled locations. Emissions to air are regulated in terms of oxides of nitrogen

(NO<sub>x</sub>), which is the term used to describe the sum of nitrogen dioxide (NO<sub>2</sub>) and nitric oxide (NO). Ambient NO<sub>2</sub> concentrations include contributions from both directly emitted primary NO<sub>2</sub> and secondary NO<sub>2</sub> formed in the atmosphere by the oxidation of NO. As such, it is not possible to calculate an unambiguous source apportionment specifically for NO<sub>2</sub> concentrations; therefore the source apportionment in this plan is presented for NO<sub>x</sub>, rather than for NO<sub>2</sub> (for further details please see the UK Technical Report). Table 3 summarises the modelled NO<sub>x</sub> source apportionment for the section of road with the highest NO<sub>2</sub> concentration in this exceedance situation in 2015. This is important information because it shows which sources need to be tackled at the location with the largest compliance gap in the exceedance situation.

Figure B.1 in Annex B presents the annual mean NO<sub>x</sub> source apportionment for each section of road within the NO<sub>2</sub>\_UK0032\_Annual\_1 exceedance situation (i.e. the source apportionment for all exceeding roads only) in 2015.

**Table 1: Measured annual mean NO<sub>2</sub> concentrations at national network stations in NO2\_UK0032\_Annual\_1 for 2001 onwards,  $\mu\text{gm}^{-3}$  (a). Data capture shown in brackets.**

Site name (EOI code)	2001	2002	2003	2004	2005	2006	2007	2008	2009	2010	2011	2012	2013	2014	2015
Chesterfield (GB0929A)								18 (73)	19 (95)	20 (91)	15 (96)	18 (97)	18 (94)	29 (38)	
Chesterfield Roadside (GB0928A)								22 (72)	21 (97)	23 (96)	23 (87)	19 (93)	22 (92)	21 (91)	20 (95)
Ladybower (GB0037R)	12 (88)	13 (97)	13 (98)	9 (90)	9 (92)	8 (46)	9 (73)	8 (94)	10 (77)	10 (94)	9 (94)	11 (98)	16 (99)	10 (78)	5 (4)
Lincoln Canwick Rd. (GB1014A)											39 (40)	44 (98)	43 (99)	38 (98)	34 (99)
Market Harborough (GB0838A)			22 (5)	13 (90)	13 (93)	11 (96)	12 (98)	11 (99)	12 (92)	12 (92)	9 (79)	15 (53)	13 (69)	14 (96)	9 (94)
Northampton (GB0738A)	23 (59)	21 (99)	24 (99)	20 (87)	23 (52)	21 (98)	21 (97)	21 (92)	21 (99)	21 (99)	18 (99)	19 (52)			
Northampton Kingsthorpe (GB1019A)												15 (47)	16 (99)	14 (99)	14 (93)
Chesterfield Loundsley Green (GB1046A)															14 (65)

(a) Annual Mean Limit Value =  $40 \mu\text{gm}^{-3}$

**Table 2: Annual mean NO<sub>2</sub> model results in NO<sub>2</sub>\_UK0032\_Annual\_1 for 2001 onwards.**

	2001	2002	2003	2004	2005	2006	2007	2008	2009	2010	2011	2012	2013	2014	2015
Road length exceeding (km)	204.3	52.3	249.7	118.3	120.5	112.2	101.8	80.8	85.9	109.9	65.0	62.4	65.3	63.0	47.7
Background exceeding (km <sup>2</sup> )	34	0	1	0	0	0	0	0	3	7	1	1	0	0	0
Maximum modelled concentration (μgm <sup>-3</sup> ) (a)	67.1	63.5	78.5	69.3	79.4	72.5	74.8	80.1	75.8	81.6	65	61	64	60	61

(a) Annual Mean Limit Value = 40 μgm<sup>-3</sup>

**Table 3: Modelled annual mean NO<sub>x</sub> source apportionment at the location with the highest NO<sub>2</sub> concentration in 2015 in NO2\_UK0032\_Annual\_1 (μgm<sup>-3</sup>) traffic count point 81247 on the A601; OS grid (m): 435738, 336288) .**

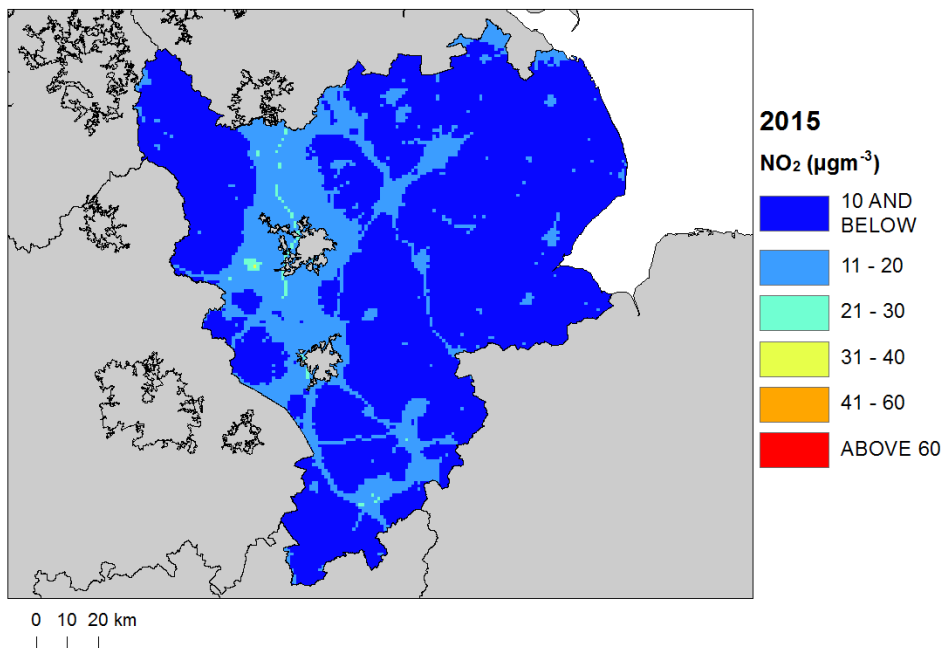
Spatial scale	Component	Concentration at highest road link (a)
Regional background sources NO <sub>x</sub> (i.e. contributions from distant sources of > 30 km from the receptor).	Total	7.0
	From within the UK	4.4
	From transboundary sources (includes shipping and other EU member states)	2.6
Urban background sources NO <sub>x</sub> (i.e. sources located within 0.3 - 30 km from the receptor).	Total	32.7
	From road traffic sources	17.7
	From industry (including heat and power generation)	2.2
	From agriculture	NA
	From commercial/residential sources	4.7
	From shipping	0.0
	From off road mobile machinery	4.6
	From natural sources	NA
	From transboundary sources	NA
From other urban background sources	3.6	
Local sources NO <sub>x</sub> (i.e. contributions from sources < 0.3 km from the receptor).	Total	119.4
	From petrol cars	10.9
	From diesel cars	46.5
	From HGV rigid (b)	7.8
	From HGV articulated (b)	2.4
	From buses	28.4
	From petrol LGVs (c)	0.1
	From diesel LGVs (c)	23.2
From motorcycles	0.3	
From London taxis	0.0	
Total NO <sub>x</sub> (i.e. regional background + urban background + local components)		159.2
Total NO <sub>2</sub> (i.e. regional background + urban background + local components)		61

(a) Components are listed with NO<sub>x</sub> concentration of NA when there is no source from this sector.

(b) HGV = heavy goods vehicle

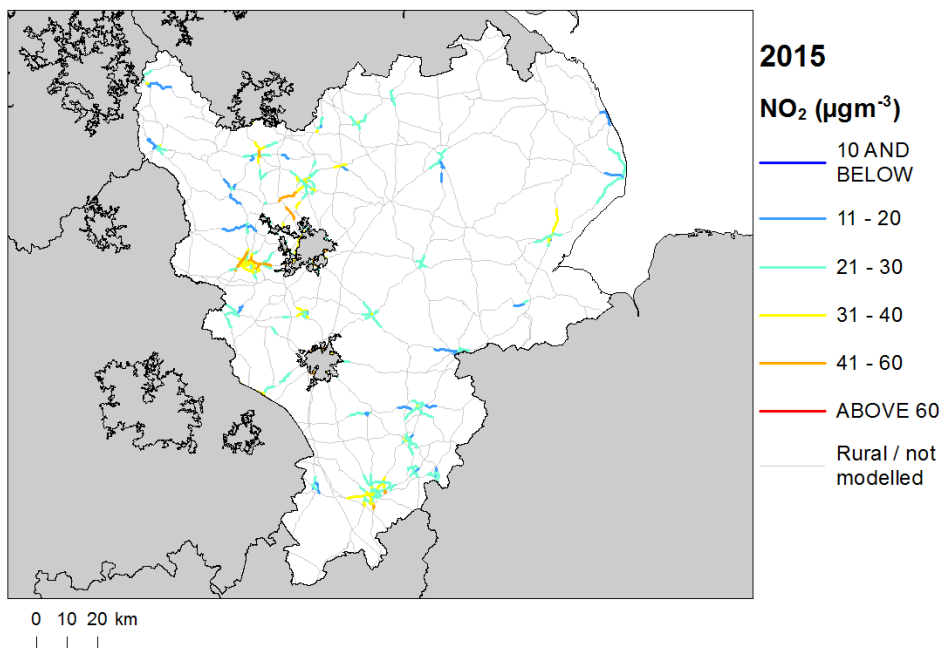
(c) LGV = light goods vehicle

**Figure 4: Map of modelled background annual mean NO<sub>2</sub> concentrations 2015. Modelled exceedances of the annual limit value are shown in orange and red.**



© Crown copyright. All rights reserved Defra, License number 100022861 [2017]

**Figure 5: Map of modelled roadside annual mean NO<sub>2</sub> concentrations 2015. Modelled exceedances of the annual limit value are shown in orange and red.**



© Crown copyright. All rights reserved Defra, License number 100022861 [2017]

## 4 Measures

### 4.1 Introduction

This section gives details of measures that address exceedances of the NO<sub>2</sub> limit values within East Midlands non-agglomeration zone. This includes both measures that have already been taken and measures for which there is a firm commitment that they will be taken.

Section 5 then explains the extent to which it has been possible to incorporate the impacts of these measures into the baseline modelling carried out for this assessment.

### 4.2 Source apportionment

It is important to understand which sources are responsible for causing the exceedance in order to most effectively tailor measures to address the NO<sub>2</sub> exceedance situation described in Section 3 above. This can be achieved by considering the source apportionment for the exceedance situation, also presented in Section 3. A summary of what the source apportionment shows and the implications for which measures would therefore be appropriate is given here.

Local road traffic was the dominant source in this exceedance location in the reference year. The largest contribution was from diesel cars at the location of maximum exceedance with a contribution of 46.5  $\mu\text{g}\text{m}^{-3}$  of NO<sub>x</sub> out of a total of 159.2  $\mu\text{g}\text{m}^{-3}$  of NO<sub>x</sub>. Diesel cars and diesel LGVs were important sources on the motorway roads with the highest concentrations in this exceedance situation. Diesel cars, diesel LGVs and on some roads articulated HGVs and rigid HGVs or buses were important sources on the primary roads with the highest concentrations. Diesel cars, diesel LGVs, and articulated and rigid HGVs were important sources on the trunk roads with the highest concentrations.

This indicates that appropriate measures should impact on local road traffic sources in this zone. Other measures to address the urban background sources may also be beneficial.

### 4.3 Measures

Measures potentially affecting NO<sub>2</sub> in this non-agglomeration zone have been taken and/or are planned at a range of administrative levels. These are:

- European Union
- National (i.e. England, Scotland, Wales, Northern Ireland or whole UK)
- Local (i.e. UK Local Authorities)

Details of European Union measures (e.g. Euro Standards, Fuel Quality Directives, Integrated Pollution Prevention and Control) can be found on the European Commission's website ([http://ec.europa.eu/environment/air/index\\_en.htm](http://ec.europa.eu/environment/air/index_en.htm)). Details of national measures are given in the UK overview document.

Relevant Local Authority measures within this exceedance situation are listed in Table C.1 (see Annex C). Table C.1 lists measures which a local authority has carried out or is in the process of carrying out, plus additional measures which the local authority is committed to carrying out or is investigating with the expectation of carrying out in the future.



Derby is one of five cities identified in the 2015 national Air Quality Plan as requiring a Clean Air Zone. Derby City Council, with Government support, is carrying out a detailed feasibility study and localised modelling with the aim of implementing a Clean Air Zone by 2019.

Derby City Council's transport plan for 2011-26 sets out how they will make the best use of the assets they have, such as their roads and support low cost and low carbon alternatives to the car, such as walking, cycling and using public transport. In its implementation plan 2015-2017, the Council sets out how it will support and encourage travel choice, provide information on all the travel alternatives available through promotion and training, and will deliver and promote walking and cycling schemes and initiatives, working in partnership with public transport providers to improve services.

The Better By Bus project committed to spending over £11.9 million through a variety of funding streams with £2.1 million from the Better Bus Area fund, with significant other funding from private investors, including Arriva and Trent Barton between 2012 and 2014. The project aims to improve the reliability and punctuality of bus services; enhance the quality of passenger facilities; improve information provision; make it easier and cheaper to travel by introducing joint operator ticketing; and encourage behaviour change through marketing and promotional activities.

Derby Council also secured funding from the Local Sustainable Transport Fund to improve sustainable transport options for commuters and businesses. This delivers a package of measures to improve bus services, cycle and pedestrian routes, cycle hubs and access from Derby station and Riverside.

Construction of the East Midlands Parkway station has also reduced congestion/car use. In 2012/13 283,756 passengers represented a 7.23% increase from 2011/12. A rail based park and ride scheme has also been set up.

Road improvement works are being implemented. The A52 Wyvern Transport Improvement Scheme aims to reduce traffic congestion and improve safety on the A52 and Wyvern. The scheme consists of:

- Extra lanes and a 50mph speed limit on the A52, near the Wyvern junctions
- A two lane, realigned access to Wyvern/Pride Park from the A52
- A new signal controlled crossroads at the junction of Wyvern Way and Derwent Parade
- Bus priority detectors on the westbound approach to the traffic signals
- Carriageway resurfacing and replacement safety barriers

Further improvements to help pedestrians and cyclists include:

- New, shared use pedestrian and cycle routes on Wyvern Way
- Crossing facilities at junctions
- A replacement footbridge linking Meadow Lane, Chaddesden and Wyvern - this will be a shared pedestrian and cycle bridge and will have ramped accesses so that it is accessible to all users

Within the design stage and planning application submissions, air quality is being modelled for 'without' and 'with' scheme scenarios. The scheme is expected to improve local air quality by reducing congestion and allowing traffic to move more freely. The scheme also involves the introduction of positive steps to improve public transport and cycle routes and to reduce the number of cars on the road. The scheme is expected to have a positive impact on Derby City Council's A52 (Spondon) AQMA, which has been designated for NO<sub>2</sub>.

## 4.4 Measures timescales

Timescales for national measures are given in the UK overview document.

Local Authorities report on progress with the implementation of their action plans annually and review action plan measures regularly. Information on local measures was collected in February/March 2015. Local authorities were asked to review and, where necessary, provide updates to measures in March/April 2017. Hence, any Local Authority action plans and measures adopted by Local Authorities after this time have not been included in this air quality plan, unless additional information was provided during the consultation process.

The reference year for this air quality plan is 2015. Where measures started and finished before 2015, then the improvement in air quality resulting from these measures will have already taken place before the reference year and the impact of these measures will have been included in the assessment where the measure has had an impact on the statistics used to compile the emission inventory. Many measures started before the reference year and will continue to have a beneficial impact on air quality well beyond the reference year. Measures with a start date before 2015 and an end date after 2015 may have an impact on concentrations in the reference year and a further impact in subsequent years. Where the Status column in Annex C is 'Implementation', this shows that this measure is already underway or that there is a commitment for this measure to go ahead. Where the Status is 'Planning', 'Preparation' or 'Other' the level of commitment is less clear and it is possible some of these measures may not go ahead.

# 5 Baseline Model Projections

## 5.1 Overview of model projections

Model projections for each year from 2017 to 2030, starting from the 2015 reference year described in Section 3, have been calculated in order to determine when compliance with the NO<sub>2</sub> limit values is likely to be achieved on the basis of EU, regional and local measures currently planned. Details of the methods used for the baseline emissions and projections modelling are provided in the UK technical report.

For national measures, it has not been possible to quantify the impact of all measures on emissions and ambient concentrations. The impact for all quantifiable measures has been included in the baseline projections.

The impacts of the individual Local Authority measures have not been explicitly included in the baseline model projections. However, measures may have been included implicitly if they have influenced the traffic counts for 2015 (used as a basis for the compilation of the emission inventory) or in the traffic activity projections to 2020 and beyond (used to calculate the emissions projections). It should be recognised that these measures will have a beneficial impact on air quality, even if it has not been possible to quantify this impact here.

## 5.2 Baseline projections: NO<sub>2</sub>\_UK0032\_Annual\_1

Table 4 presents summary results for the baseline model projections for each year from 2017 to 2030 for the NO<sub>2</sub>\_UK0032\_Annual\_1 exceedance situation. This shows that the maximum modelled annual mean NO<sub>2</sub> concentration predicted for 2020 in this exceedance situation is 49  $\mu\text{g}\text{m}^{-3}$ . By 2024, the maximum modelled annual mean NO<sub>2</sub> concentration is predicted to drop to 39  $\mu\text{g}\text{m}^{-3}$ . Hence, the model results suggest that compliance with the NO<sub>2</sub> annual limit value is likely to be achieved by 2024 under baseline conditions.

Figure 6 and 7 presents maps of projected annual mean NO<sub>2</sub> concentrations at background and roadside locations respectively in 2024, the year at which compliance is achieved. For reference Figures 8 and 9 show

maps of projected annual mean NO<sub>2</sub> concentrations in 2020, 2025 and 2030 for background and roadside locations respectively.

It should be noted that the baseline projections presented here include the impacts of some measures, where they can be quantified, that have already been or will be implemented.

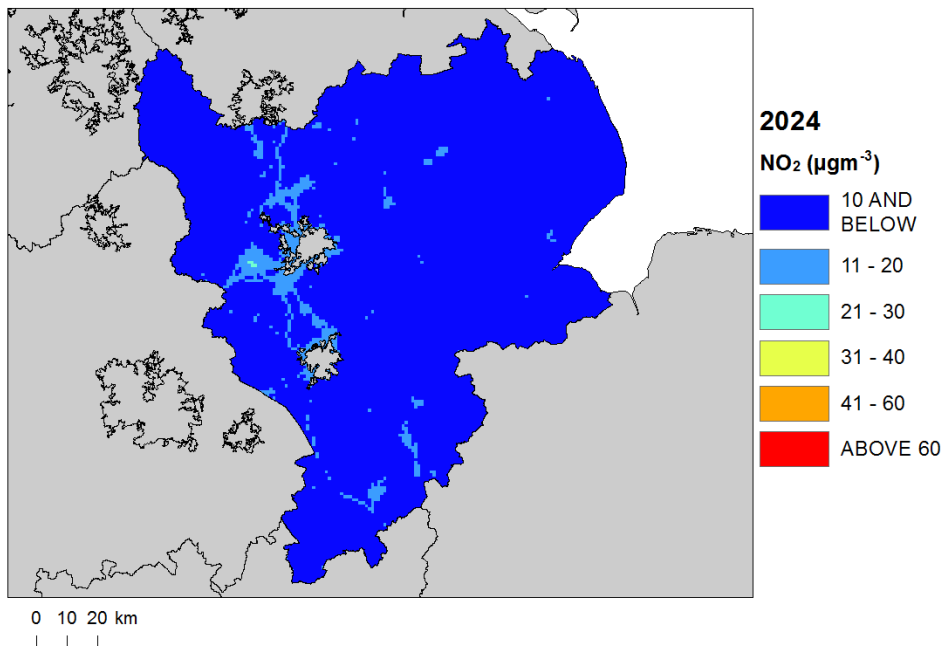
**Table 4: Annual mean NO<sub>2</sub> model results in NO<sub>2</sub>\_UK0032\_Annual\_1.**

	2015	2017	2018	2019	2020	2021	2022	2023	2024	2025	2026	2027	2028	2029	2030
Road length exceeding (km)	47.7	31.5	15.2	7.0	5.8	0.4	0.4	0.4	0.0	0.0	0.0	0.0	0.0	0.0	0.0
Background exceeding (km <sup>2</sup> )	0	0	0	0	0	0	0	0	0	0	0	0	0	0	0
Maximum modelled concentration NO <sub>2</sub> (μgm <sup>-3</sup> ) (a)	61	57	55	52	49	46	44	41	39	37	35	34	32	31	30
Corresponding modelled concentration NO <sub>x</sub> (μgm <sup>-3</sup> ) (b)	159	147	139	131	122	113	104	97	91	85	80	75	71	67	64

(a) Annual Mean Limit Value = 40 μgm<sup>-3</sup>

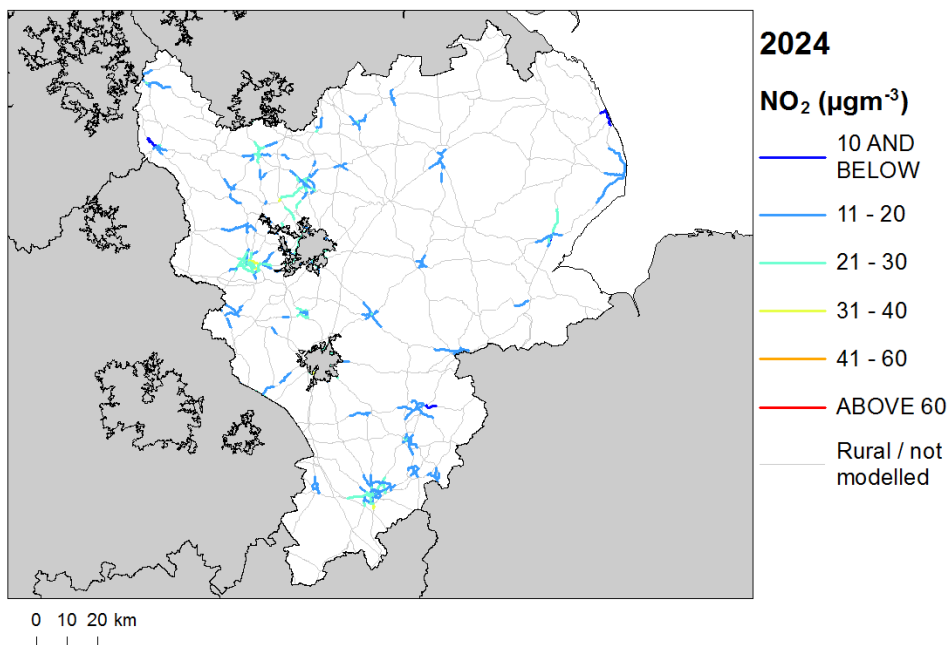
(b) NO<sub>x</sub> is recorded here for comparison with the NO<sub>x</sub> source apportionment graphs for 2015 presented in Annex B of this plan. Limit values for EU directive purposes are based on NO<sub>2</sub>.

**Figure 6: Background baseline projections of annual mean NO<sub>2</sub> concentrations in 2024, the year at which compliance is achieved under baseline conditions. Modelled exceedances of the annual limit value are shown in orange and red.**



© Crown copyright. All rights reserved Defra, License number 100022861 [2017]

**Figure 7: Roadside baseline projections of annual mean NO<sub>2</sub> concentrations in 2024, the year at which compliance is achieved under baseline conditions. Modelled exceedances of the annual limit value are shown in orange and red.**



© Crown copyright. All rights reserved Defra, License number 100022861 [2017]

Figure 8: Background baseline projections of annual mean NO<sub>2</sub> concentrations in 2020, 2025 and 2030. 2015 is also included here for reference. Modelled exceedances of the annual limit value are shown in orange and red.

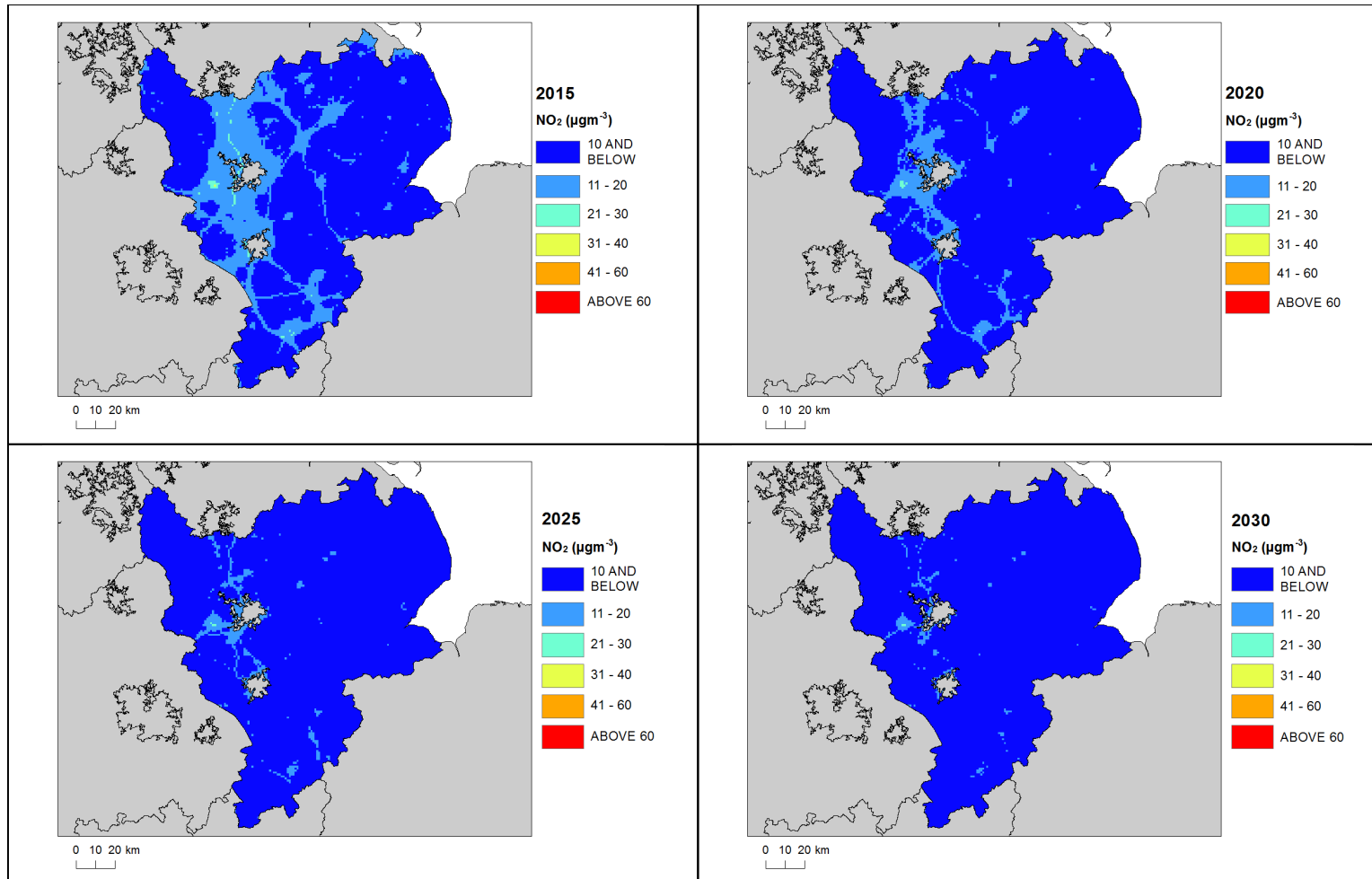
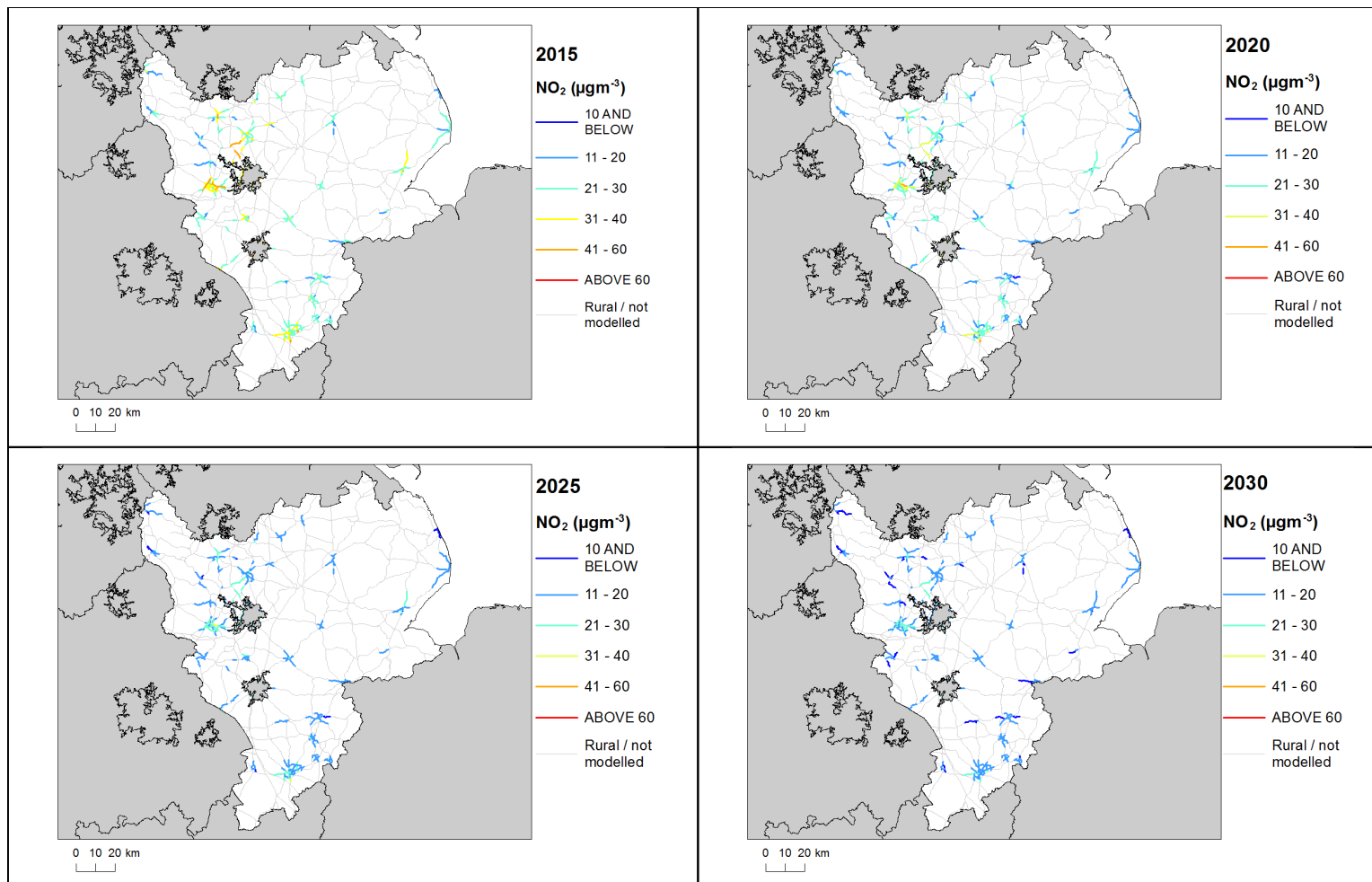


Figure 9: Roadside baseline projections of annual mean NO<sub>2</sub> concentrations in 2020, 2025 and 2030. 2015 is also included here for reference. Modelled exceedances of the annual limit value are shown in orange and red.



# Annexes

## A References

1st Daughter Directive 1999/30/EC. Council Directive 1999/30/EC, of 22 April 1999 relating to limit values for sulphur dioxide, nitrogen dioxide and oxides of nitrogen, particulate matter and lead in ambient air (The First Daughter Directive). From the Official Journal of the European Communities, 29.6.1999, En Series, L163/41.

Air Quality Directive 2008/50/EC. Council Directive 2008/50/EC, of 21 May 2008. On ambient air quality and cleaner air for Europe. From the Official Journal of the European Union, 11.6.2008, En Series, L152/1

Air Quality Expert Group (AQEG, 2004). Nitrogen Dioxide in the United Kingdom. <http://uk-air.defra.gov.uk/library/aqeg/publications>

CDR Central Data Repository. <http://cdr.eionet.europa.eu/>

Decision 2004/224/EC. Commission Decision of 20 February 2004 laying down arrangements for the submission of information on plans or programmes required under Council Directive 96/62/EC in relation to limit values for certain pollutants in ambient air. From the Official Journal of the European Union, 6.3.2004, En Series, L68/27

Decision 2004/461/EC. Commission Decision of 29 April 2004 laying down a questionnaire to be used for annual reporting on ambient air quality assessment under Council Directives 96/62/EC and 1999/30/EC and under Directives 2000/69/EC and 2002/3/EC of the European Parliament and of the Council. From the Official Journal of the European Union, 30.4.2004, En Series, L156/78

Decision 2011/850/EU. Commission Implementing Decision of 12 December 2011 laying down rules for Directives 2004/107/EC and 2008/50/EC of the European Parliament and of the Council as regards the reciprocal exchange of information and reporting on ambient air quality. From the Official Journal of the European Union, 17.12.2011, En Series, L335/86

IPR 2013. Guidance on the Commission Implementing Decision laying down rules for Directives 2004/107/EC and 2008/50/EC of the European Parliament and of the Council as regards the reciprocal exchange of information and reporting on ambient air (Decision 2011/850/EU). [http://ec.europa.eu/environment/air/quality/legislation/pdf/IPR\\_guidance1.pdf](http://ec.europa.eu/environment/air/quality/legislation/pdf/IPR_guidance1.pdf)

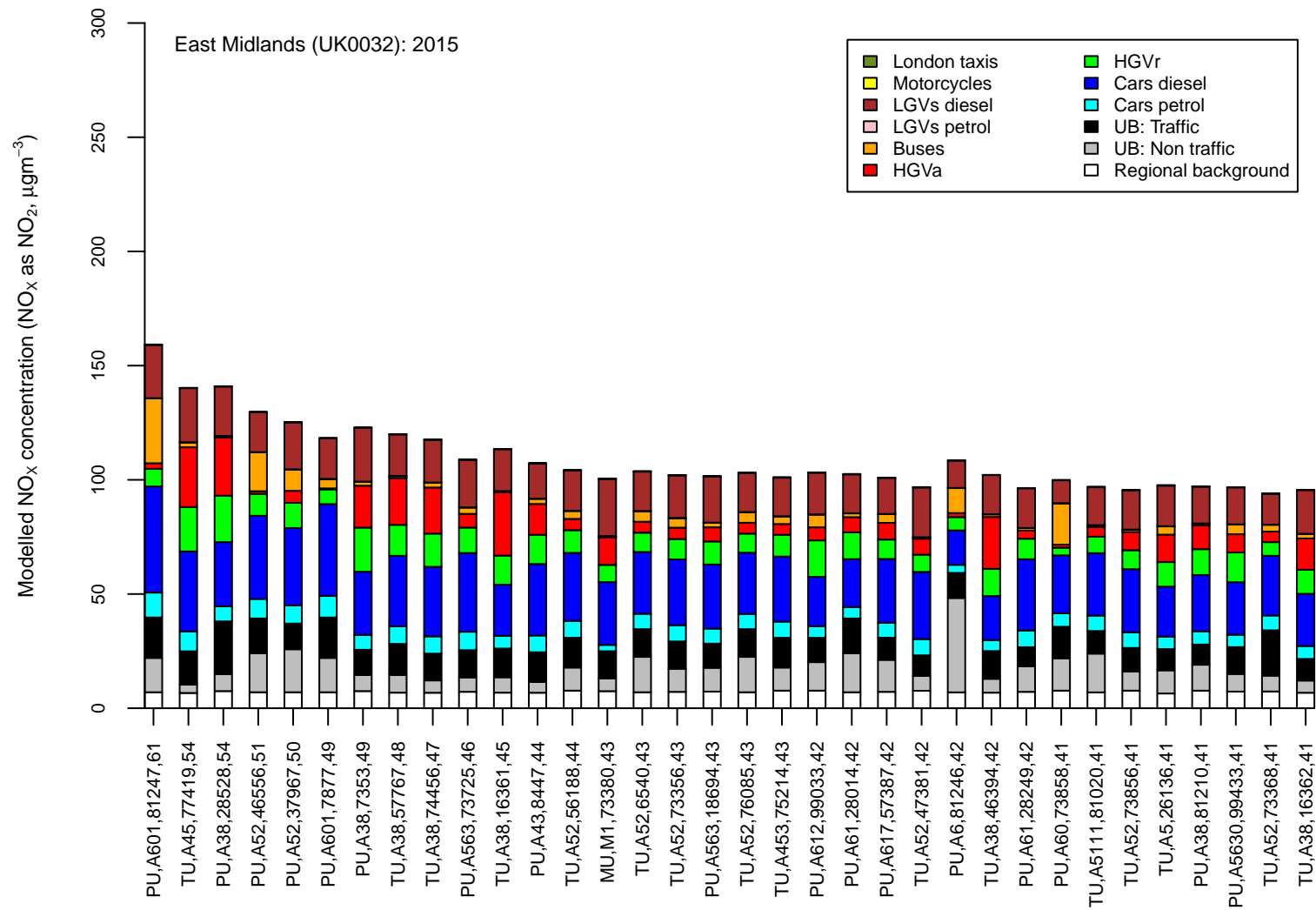
UK Air Quality Plan for tackling roadside nitrogen dioxide concentrations and the UK technical report are available at: <http://www.gov.uk/defra>.



## **B Source apportionment graphs**

*Page left blank.*

Figure B.1: Annual mean roadside NO<sub>x</sub> source apportionment plots for all roads exceeding the annual mean NO<sub>2</sub> limit value in 2015.



Road class (MU = motorway, PU = primary road, TU = trunk road), road number, census id 15 and modelled NO<sub>2</sub> concentration (µgm<sup>-3</sup>)

## C Tables of measures

*Page left blank.*

**Table C.1 Relevant Local Authority measures within East Midlands (UK0032)**

Measure code	Description	Focus	Classification	Status	Other information
Blaby District Council_1	Smart Motorways	Sections of M1	Traffic planning and management: Other measure	Preparation	Start date: 2016 Expected end date: 2025 Spatial scale: Local Source affected: Transport Indicator: N/A Target emissions reduction: N/A
Blaby District Council_2	Painted chevrons	Sections of M1	Traffic planning and management: Other measure	Preparation	Start date: 2016 Expected end date: 2017 Spatial scale: Local Source affected: Transport Indicator: N/A Target emissions reduction: N/A
Blaby District Council_3	Noise barriers	Sections of M1	Traffic planning and management: Other measure	Preparation	Start date: 2016 Expected end date: 2018 Spatial scale: Local Source affected: Transport Indicator: N/A Target emissions reduction: N/A
Blaby District Council_4	VMS	Sections of M1	Public information and Education: Other mechanisms	Preparation	Start date: 2016 Expected end date: 2016 Spatial scale: Local Source affected: Transport Indicator: N/A Target emissions reduction: N/A
Blaby District Council_5	Ecodriving	Sections of M1	Other measure: Other measure	Preparation	Start date: 2016 Expected end date: 2016 Spatial scale: Local Source affected: Transport Indicator: N/A Target emissions reduction: N/A

Measure code	Description	Focus	Classification	Status	Other information
Blaby District Council_6	Traffic management measures	Certain junctions in AQMAs	Traffic planning and management: Other measure	Preparation	Start date: 2017 Expected end date: 2017 Spatial scale: Local Source affected: Transport Indicator: N/A Target emissions reduction: N/A
Blaby District Council_7	Ramp Metering	Sections of M1	Traffic planning and management: Other measure	Preparation	Start date: 2016 Expected end date: 2025 Spatial scale: Local Source affected: Transport Indicator: N/A Target emissions reduction: N/A
Blaby District Council_8	Integration of Air Quality into planning policy	District	Other measure: Other measure	Planning	Start date: 2015 Expected end date: 2016 Spatial scale: Local Source affected: Transport Indicator: N/A Target emissions reduction: N/A
Bolsover District Council_1	Liase with Highways Agency re Management Motorway Scheme between Jn 28-31 of the M1 - currently awaiting the final Environmental Assessment Report to be published by Mouchel	N/A	Traffic planning and management: Other measure	Planning	Start date: 2014 Expected end date: 2014 Spatial scale: Local Source affected: Transport Indicator: N/A Target emissions reduction: N/A
Boston Borough Council_1	Outer Distributer Road	N/A	Traffic planning and management: Other measure	Planning	Start date: 2011 Expected end date: 2031 Spatial scale: Local Source affected: Transport Indicator: N/A Target emissions reduction: Annual Mean Reduction <40 g/m3

Measure code	Description	Focus	Classification	Status	Other information
Boston Borough Council_2	Boston Transport Strategy 2006 (BTS 2006)	N/A	Traffic planning and management: Encouragement of shift of transport modes	Implementation	Start date: 2006 Expected end date: 2015 Spatial scale: Local Source affected: Transport Indicator: N/A Target emissions reduction: <40 g/m3
Boston Borough Council_3	Investigation of Inland Waterways	N/A	Traffic planning and management: Encouragement of shift of transport modes	Planning	Start date: 2011 Expected end date: 2019 Spatial scale: Local Source affected: Transport Indicator: N/A Target emissions reduction: <40 g/m3
Boston Borough Council_4	Community Travel Zone Expansion	N/A	Traffic planning and management: Encouragement of shift of transport modes	Implementation	Start date: 2006 Expected end date: 2015 Spatial scale: Local Source affected: Transport Indicator: N/A Target emissions reduction: <40 g/m3
Boston Borough Council_5	BTS 2006: Bus priority measures	N/A	Traffic planning and management: Improvement of public transport	Implementation	Start date: 2006 Expected end date: 2015 Spatial scale: Local Source affected: Transport Indicator: N/A Target emissions reduction: <40 g/m3
Boston Borough Council_6	BTS 2006: Real time Passenger Information	N/A	Public information and Education: Other mechanisms	Implementation	Start date: 2006 Expected end date: 2015 Spatial scale: Local Source affected: Transport Indicator: N/A Target emissions reduction: <40 g/m3

Measure code	Description	Focus	Classification	Status	Other information
Boston Borough Council_7	BTS 2006: Improving the existing A16/A52 main roads	N/A	Traffic planning and management: Other measure	Implementation	Start date: 2006 Expected end date: 2015 Spatial scale: Local Source affected: Transport Indicator: N/A Target emissions reduction: <40 g/m3
Boston Borough Council_8	BTS 2006: Traffic Management Measures	N/A	Traffic planning and management: Encouragement of shift of transport modes	Implementation	Start date: 2006 Expected end date: 2015 Spatial scale: Local Source affected: Transport Indicator: N/A Target emissions reduction: <40 g/m3
Boston Borough Council_9	BTS 2006: Rail Improvements	N/A	Traffic planning and management: Encouragement of shift of transport modes	Implementation	Start date: 2006 Expected end date: 2015 Spatial scale: Local Source affected: Transport Indicator: Bike count every 3 months Target emissions reduction: <40 g/m3
Boston Borough Council_10	BTS 2006: Encouragement of Walking and Cycling	N/A	Traffic planning and management: Encouragement of shift of transport modes	Implementation	Start date: 2006 Expected end date: 2015 Spatial scale: Local Source affected: Transport Indicator: N/A Target emissions reduction: <40 g/m3
Boston Borough Council_11	BTS 2006: Car Parking improvements	N/A	Public information and Education: Other mechanisms	Implementation	Start date: 2006 Expected end date: 2015 Spatial scale: Local Source affected: Transport Indicator: N/A Target emissions reduction: <40 g/m3

Measure code	Description	Focus	Classification	Status	Other information
Boston Borough Council_12	BTS 2006: Promotion of Sustainable Travel Plans	N/A	Traffic planning and management: Encouragement of shift of transport modes	Implementation	Start date: 2006 Expected end date: 2015 Spatial scale: Local Source affected: Transport Indicator: N/A Target emissions reduction: <40 g/m3
Boston Borough Council_13	BTS 2006: Council Sustainable Travel Plan	N/A	Traffic planning and management: Encouragement of shift of transport modes	Implementation	Start date: 2006 Expected end date: 2015 Spatial scale: Local Source affected: Transport Indicator: N/A Target emissions reduction: <40 g/m3
Broxtowe Borough Council_1	Continue Discussions with Highways England	Liaise and consult with HA with regards to M1 expansion	Traffic planning and management: Encouragement of shift of transport modes	Evaluation	Start date: 2009 Expected end date: 2010 Spatial scale: Whole agglomeration Source affected: Transport Indicator: Diffusion tube data sited along M1 corridor Target emissions reduction: Reduction in line with national annual trends
Broxtowe Borough Council_2	Support the Nottinghamshire Local Transport Plan	Support the County Council with its aim to achieve traffic reduction by improving the infrastructure needed to encourage sustainable travel and reduce unnecessary car use	Traffic planning and management: Encouragement of shift of transport modes	Implementation	Start date: 2010 Expected end date: 2026 Spatial scale: Whole agglomeration Source affected: Transport Indicator: Diffusion tube data sited along major trunk roads within borough Target emissions reduction: N/a



Measure code	Description	Focus	Classification	Status	Other information
Broxtowe Borough Council_3	Consider the impact of new developments on air quality	Continue to seek evidence that developers have taken appropriate steps to minimise any increases in air pollution regardless of their location.	Other measure: Other measure	Implementation	Start date: 2008 Expected end date: 2030 Spatial scale: Whole agglomeration Source affected: Transport Indicator: Based on case by case scenario - dependant on site being developed Target emissions reduction: N/a
Broxtowe Borough Council_4	Produce Broxtowe Travel Plan	Detail the Council's commitment to promote sustainable travel to all Employees / Councillors and Visitors	Other measure: Other measure	Evaluation	Start date: 2007 Expected end date: 2012 Spatial scale: Whole agglomeration Source affected: Transport Indicator: Reduction in car journeys for employees / Councillors / Visitors Target emissions reduction: N/a
Broxtowe Borough Council_5	Proactively inspect IPPC permitted processes	Continue to proactively inspect prescribed Part A2 / B processes under the Pollution Prevention and Control Act 1999	Permit systems and economic instruments: Other measure	Implementation	Start date: 2009 Expected end date: 2030 Spatial scale: Whole agglomeration Source affected: Industry including heat and power production Indicator: Statistics complied to DEFRA Target emissions reduction: N/a

Measure code	Description	Focus	Classification	Status	Other information
Broxtowe Borough Council_6	Investigate dark/ black smoke allegations at industrial premises	Investigate and take appropriate action to industrial and trade waste fires which produce dark / black smoke under The Clean Air Act 1993	Other measure: Other measure	Implementation	Start date: 2008 Expected end date: 2030 Spatial scale: Whole agglomeration Source affected: Industry including heat and power production Indicator: Respond to complaints Target emissions reduction: N/a
Broxtowe Borough Council_7	Investigate allegations of smoke nuisance within the borough	Investigate and take appropriate action to smoke nuisance under The Environmental Protection Act 1990	Other measure: Other measure	Implementation	Start date: 2008 Expected end date: 2030 Spatial scale: Whole agglomeration Source affected: Commercial and residential sources Indicator: Respond to complaints Target emissions reduction: N/a
Broxtowe Borough Council_8	Proactive advice and investigate complaints relating to smoke control areas	Advise and investigate	Other measure: Other measure	Implementation	Start date: 2008 Expected end date: 2030 Spatial scale: Whole agglomeration Source affected: Commercial and residential sources Indicator: Respond to complaints / requests for information Target emissions reduction: N/a

Measure code	Description	Focus	Classification	Status	Other information
Broxtowe Borough Council_9	Advise of sustainable methods of waste disposal	Advise businesses and residents of alternative methods of waste disposal rather than incineration	Public information and Education: Other mechanisms	Implementation	Start date: 2008 Expected end date: 2030 Spatial scale: Whole agglomeration Source affected: Commercial and residential sources Indicator: Respond to complaints / requests for information Target emissions reduction: N/a
Broxtowe Borough Council_10	Attend meetings organised by the Nottinghamshire Air Quality Steering Group	To regularly meet with group to discuss air quality	Other measure: Other measure	Implementation	Start date: 2008 Expected end date: 2030 Spatial scale: Whole agglomeration Source affected: Other, please specify Indicator: Attendance of meetings Target emissions reduction: N/a
Broxtowe Borough Council_11	Improve Public Information	Update website with information on air quality	Public information and Education: Internet	Implementation	Start date: 2008 Expected end date: 2030 Spatial scale: Local Source affected: Commercial and residential sources Indicator: Updating air quality information on website Target emissions reduction: N/a
Broxtowe Borough Council_12	Raise public awareness	Update website with information on air quality. Make public aware of initiatives with regards to climate change / air quality	Traffic planning and management: Encouragement of shift of transport modes	Implementation	Start date: 2008 Expected end date: 2030 Spatial scale: Local Source affected: Transport Indicator: Updating air quality information on website. Awareness campaigns Target emissions reduction: N/a

Measure code	Description	Focus	Classification	Status	Other information
Broxtowe Borough Council_13	Review of Air Quality Diffusion Tube Monitoring Points	To ensure monitoring points comply with current defra guidance, allows effective monitoring of key areas by reviewing those that are no longer accessible and to respond to new developments/expansion of sites	Other measure: Other measure	Evaluation	Start date: 2015 Expected end date: 2030 Spatial scale: Local Source affected: Other, please specify Indicator: N/a Target emissions reduction: N/a
Charnwood Borough Council_1	Eastern Gateway Project:	Construction of a new link road [combined with the closure of Ratcliffe Road (currently in an AQMA) to through-traffic], from Nottingham Road to Meadow Lane on derelict land around Loughborough Rail Station. Enabling much improved access to the station, reducing delay and congestion in the area. Improvements to the station forecourt area, combined with the new link road has enabled greatly improved and consolidated public transport interchange facilities at the station i.e. integrated bus hub, taxi ranks, cycle racks. Associated traffic management improvements to surrounding narrow residential streets, including removing lorries from unsuitable routes and introducing a residents parking scheme.	Traffic planning and management: Improvement of public transport	Evaluation	Start date: 2011 Expected end date: 2011 Spatial scale: Local Source affected: Transport Indicator: N/A Target emissions reduction: N/A

Measure code	Description	Focus	Classification	Status	Other information
Charnwood Borough Council_2	Loughborough Inner Relief Road	Construction of an inner relief road to redirect all traffic away from the arterial A6 (High Street and Swan Street) allowing for pedestrianisation of the town centre. The scheme incorporates new bus stops and travel information 'waypoints' in the pedestrianised area, consolidated taxi ranks, improved traffic management (control and signage), parking restrictions	Traffic planning and management: Improvement of public transport	Evaluation	Start date: 2014 Expected end date: 2014 Spatial scale: Local Source affected: Transport Indicator: N/A Target emissions reduction: N/A
Charnwood Borough Council_3	Epinal Way Junction	Alterations made to junction layout, providing extra lanes and improved traffic signals to aid traffic flow.	Traffic planning and management: Other measure	Evaluation	Start date: 2014 Expected end date: 2014 Spatial scale: Local Source affected: Transport Indicator: N/A Target emissions reduction: N/A
Charnwood Borough Council_4	Put in two electric charge points at Beehive Lane car park Loughborough for public use	N/A	Public procurement: Other measure	Implementation	Start date: 2014 Expected end date: 2014 Spatial scale: Local Source affected: Transport Indicator: Equipment on site and contract in place with contractor to supply to public Target emissions reduction: Not known

Measure code	Description	Focus	Classification	Status	Other information
Charnwood Borough Council_5	Renew 3 no. street wardens fleet vehicles with 2 electric charge vehicles and one Diesel. Currently have 3 diesel vehicles	N/A	Public procurement: New vehicles, including low emission vehicles	Implementation	Start date: 2015 Expected end date: 2015 Spatial scale: Local Source affected: Transport Indicator: New vehicles on site including 2 electric charge vehicles Target emissions reduction: Not known
Charnwood Borough Council_6	Driver assessments	N/A	Other measure: Other measure	Planning	Start date: 2015 Expected end date: 2030 Spatial scale: Local Source affected: Transport Indicator: Reduction in fuel consumption Target emissions reduction: Not known
Charnwood Borough Council_7	Investment in cycle route network to reach all parts of Loughborough	N/A	Traffic planning and management: Expansion of bicycle and pedestrian infrastructure	Other	Start date: 2007 Expected end date: 2030 Spatial scale: Local Source affected: Transport Indicator: Monitoring of %age increase in cycling at counting points across Loughborough Target emissions reduction: Not known
Charnwood Borough Council_8	Evaluation of fewer parking spaces or differentiation of parking fees	N/A	Traffic planning and management: Management of parking places	Other	Start date: 2007 Expected end date: 2030 Spatial scale: Local Source affected: Transport Indicator: Incorporating the effectiveness of Civil Parking Enforcement (CPE) Target emissions reduction: Not known

Measure code	Description	Focus	Classification	Status	Other information
Charnwood Borough Council_9	Staff Car sharing scheme	N/A	Other measure: Other measure	Other	Start date: 2005 Expected end date: 2030 Spatial scale: Local Source affected: Transport Indicator: N/A Target emissions reduction: N/A
Charnwood Borough Council_10	CO2 banding for staff car parking allowance / permits	N/A	Traffic planning and management: Differentiation of parking fees	Other	Start date: 2005 Expected end date: 2030 Spatial scale: Local Source affected: Transport Indicator: N/A Target emissions reduction: N/A
Charnwood Borough Council_11	Increasing bus travel through work on Quality Bus Partnership (QBP)	N/A	Traffic planning and management: Improvement of public transport	Other	Start date: 2007 Expected end date: 2030 Spatial scale: Local Source affected: Transport Indicator: N/A Target emissions reduction: N/A
Charnwood Borough Council_12	Birstall 'Park & Ride'	N/A	Traffic planning and management: Improvement of public transport	Other	Start date: 2011 Expected end date: 2030 Spatial scale: Local Source affected: Transport Indicator: N/A Target emissions reduction: N/A
Charnwood Borough Council_13	Voluntary public emission testing with VOSA	N/A	Public information and Education: Other mechanisms	Other	Start date: 2006 Expected end date: 2030 Spatial scale: Local Source affected: Transport Indicator: N/A Target emissions reduction: N/A

Measure code	Description	Focus	Classification	Status	Other information
Charnwood Borough Council_14	Increasing travel by train with bus connections to town centre and key destinations	N/A	Traffic planning and management: Improvement of public transport	Other	Start date: 2006 Expected end date: 2030 Spatial scale: Whole town or city Source affected: Transport Indicator: N/A Target emissions reduction: N/A
Charnwood Borough Council_15	Personalised Travel Planning and Accessibility Team set up to promote sustainable travel choices	N/A	Traffic planning and management: Encouragement of shift of transport modes	Other	Start date: 2009 Expected end date: 2030 Spatial scale: Whole town or city Source affected: Transport Indicator: N/A Target emissions reduction: N/A
Charnwood Borough Council_16	Network management for roadworks, incidents, and planned events	N/A	Traffic planning and management: Other measure	Other	Start date: 2007 Expected end date: 2030 Spatial scale: Whole town or city Source affected: Transport Indicator: N/A Target emissions reduction: N/A
Charnwood Borough Council_17	School Travel Planning	N/A	Traffic planning and management: Encouragement of shift of transport modes	Other	Start date: 2007 Expected end date: 2030 Spatial scale: Whole town or city Source affected: Transport Indicator: Schools with travel plans in place and monitoring the % of journeys to school as the only pupil Target emissions reduction: N/A



Measure code	Description	Focus	Classification	Status	Other information
Charnwood Borough Council_18	Providing more consistent and reliable journey times	N/A	Traffic planning and management: Other measure	Evaluation	Start date: 2014 Expected end date: 2030 Spatial scale: Whole agglomeration Source affected: Transport Indicator: Average vehicle speeds (weekday morning peak) Target emissions reduction: N/A
Charnwood Borough Council_19	Following completion of Town Centre Improvement Scheme, review TRO arrangements and signal operations at key junctions in / around town	N/A	Traffic planning and management: Other measure	Planning	Start date: 2017 Expected end date: 2030 Spatial scale: Whole town or city Source affected: Transport Indicator: N/A Target emissions reduction: N/A
Charnwood Borough Council_20	Programme of network signing improvements (including de-cluttering)	N/A	Traffic planning and management: Other measure	Planning	Start date: 2017 Expected end date: 2030 Spatial scale: Whole town or city Source affected: Transport Indicator: N/A Target emissions reduction: N/A
Derby City Council_1	Develop Electric Vehicle Charging Strategy (EVCS) for the City	Resource-constrained	Public procurement: Other measure	Evaluation	Start date: 2014 Expected end date: 2030 Spatial scale: Whole town or city Source affected: Transport Indicator: Unknown Target emissions reduction: Unknown

Measure code	Description	Focus	Classification	Status	Other information
Derby City Council_2	Develop Low Emissions Strategy for the City	Resource-constrained (Subject of DEFRA bid)	Other measure: Other measure	Planning	Start date: 2017 Expected end date: 2018 Spatial scale: Whole town or city Source affected: Other, please specify Indicator: Unknown Target emissions reduction: Unknown
Derby City Council_3	Feasibility Study for Clean Air Zone	Ongoing	Traffic planning and management: Low emission zones	Implementation	Start date: 2016 Expected end date: 2018 Spatial scale: Whole town or city Source affected: Transport Indicator: Unknown Target emissions reduction: Unknown
Derby City Council_4	Clean Air Zone (access restriction) Implementation	Ongoing	Traffic planning and management: Low emission zones	Planning	Start date: 2018 Expected end date: 2020 Spatial scale: Whole town or city Source affected: Transport Indicator: Unknown Target emissions reduction: >3gm-3
Derby City Council_5	Clean Air Zone - Complementary / supporting measures design and implementation	Ongoing	Public procurement: Other measure	Evaluation	Start date: 2016 Expected end date: 2025 Spatial scale: Whole town or city Source affected: Other, please specify Indicator: Unknown Target emissions reduction: Unknown

Measure code	Description	Focus	Classification	Status	Other information
Derby City Council_6	Ensure bus, taxi and private hire vehicle emission standards are improved to meet CAZ standards using licensing, franchise or partnership approaches as appropriate	Ongoing	Public procurement: Other measure	Evaluation	Start date: 2016 Expected end date: 2025 Spatial scale: Whole town or city Source affected: Transport Indicator: Unknown Target emissions reduction: Unknown
Derby City Council_7	A programme of awareness raising and data sharing for the CAZ	Ongoing	Public information and Education: Other mechanisms	Evaluation	Start date: 2016 Expected end date: 2020 Spatial scale: Whole town or city Source affected: Transport Indicator: Unknown Target emissions reduction: Unknown
Derby City Council_8	Promotion of National Clean Air Day in conjunction with five other CAZ cities (air quality awareness and engagement campaign led by Global Action plan (GAP))	DEFRA AQ Grant	Public information and Education: Other mechanisms	Evaluation	Start date: 2016 Expected end date: 2020 Spatial scale: Whole town or city Source affected: Transport Indicator: Unknown Target emissions reduction: Unknown
Derby City Council_9	CAZ - Working with businesses to recognise and incentivise action - engaging businesses to encourage early take-up of low emission vehicles to use of low emission vehicles	Ongoing	Public procurement: Other measure	Planning	Start date: 2017 Expected end date: 2020 Spatial scale: Whole town or city Source affected: Transport Indicator: Unknown Target emissions reduction: Unknown

Measure code	Description	Focus	Classification	Status	Other information
Derby City Council_10	Personalised journey planning	Access Fund - Ongoing	Traffic planning and management: Encouragement of shift of transport modes	Planning	Start date: 2017 Expected end date: 2020 Spatial scale: Whole town or city Source affected: Transport Indicator: Unknown Target emissions reduction: Unknown
Derby City Council_11	Community active travel services	Access Fund - Ongoing	Traffic planning and management: Encouragement of shift of transport modes	Planning	Start date: 2017 Expected end date: 2020 Spatial scale: Whole town or city Source affected: Transport Indicator: Unknown Target emissions reduction: Unknown
Derby City Council_12	Travel options for business employees	Access Fund - Ongoing	Traffic planning and management: Encouragement of shift of transport modes	Planning	Start date: 2017 Expected end date: 2020 Spatial scale: Whole town or city Source affected: Transport Indicator: Unknown Target emissions reduction: Unknown
Derby City Council_13	Jobseeker one stop shop and referral services	Access Fund - Ongoing	Traffic planning and management: Encouragement of shift of transport modes	Planning	Start date: 2017 Expected end date: 2020 Spatial scale: Whole town or city Source affected: Transport Indicator: Unknown Target emissions reduction: Unknown

Measure code	Description	Focus	Classification	Status	Other information
Derby City Council_14	Upgrade Council vehicle fleet to include low-emissions fuels, and emissions control-devices including ensuring that all diesel powered vehicles in the Council fleet use only ultra low sulphur diesel.	Ongoing (following successful AQ Grant Funding and OLEV Funding)	Other measure: Other measure	Evaluation	Start date: 2017 Expected end date: 2020 Spatial scale: Whole town or city Source affected: Transport Indicator: Unknown Target emissions reduction: Unknown
Derby City Council_15	Encourage bus companies to enforce policies about idling engines and the benefits of smoother driving.	Resource-constrained	Public procurement: Other measure	Evaluation	Start date: 2014 Expected end date: 2030 Spatial scale: Whole town or city Source affected: Transport Indicator: Unknown Target emissions reduction: Unknown
Derby City Council_16	Electric vehicle parking promotion scheme	OLEV Funding	Public procurement: Other measure	Evaluation	Start date: 2014 Expected end date: 2030 Spatial scale: Whole town or city Source affected: Transport Indicator: Unknown Target emissions reduction: Unknown
Derby City Council_17	Ensure that air pollution is taken into consideration when assessing applications for planning permission and ensure mitigation is secured via planning conditions where necessary	Ongoing	Other measure: Other measure	Evaluation	Start date: 2014 Expected end date: 2030 Spatial scale: Whole town or city Source affected: Transport Indicator: Unknown Target emissions reduction: Unknown

Measure code	Description	Focus	Classification	Status	Other information
Derby City Council_18	Consider the air quality impact of proposals in the regeneration of the city centre through the City Centre Regeneration Framework and Spatial Planning	Ongoing	Other measure: Other measure	Evaluation	Start date: 2014 Expected end date: 2030 Spatial scale: Whole town or city Source affected: Transport Indicator: Unknown Target emissions reduction: Unknown
Derby City Council_19	Develop Supplementary Planning Guidance on Air Quality - including AQ assessment standards and minimum AQ mitigation requirements for proposed Development	Ongoing	Other measure: Other measure	Evaluation	Start date: 2014 Expected end date: 2030 Spatial scale: Whole town or city Source affected: Transport Indicator: Unknown Target emissions reduction: Unknown
Derby City Council_20	Develop Guidance on Air Quality for spatial planners/regeneration	Ongoing	Other measure: Other measure	Implementation	Start date: 2016 Expected end date: 2017 Spatial scale: Whole town or city Source affected: Other, please specify Indicator: Unknown Target emissions reduction: Unknown
Derby City Council_21	Seek financial contributions from developments and require mitigating measures such as business travel plans via planning agreements with developers to help mitigate the impacts of developments and support improvements to public transport and sustainable travel modes	Ongoing	Other measure: Other measure	Evaluation	Start date: 2014 Expected end date: 2030 Spatial scale: Whole town or city Source affected: Transport Indicator: Unknown Target emissions reduction: Unknown

Measure code	Description	Focus	Classification	Status	Other information
Derby City Council_22	Extend traffic signal control systems to optimise traffic flows and modal priority across the city	Ongoing	Traffic planning and management: Other measure	Evaluation	Start date: 2014 Expected end date: 2030 Spatial scale: Whole town or city Source affected: Transport Indicator: Unknown Target emissions reduction: Unknown
Derby City Council_23	Monitor air quality following opening of 'Connecting Derby' (new road network) to determine any air quality improvements or issues.	Complete - Results reported in 2016 Updating and Screening Assessment	Public information and Education: Other mechanisms	Evaluation	Start date: 2014 Expected end date: 2030 Spatial scale: Whole town or city Source affected: Transport Indicator: Unknown Target emissions reduction: Unknown
Derby City Council_24	Grade separating congested junctions e.g. flyovers and underpasses on A38 and A52	Ongoing	Traffic planning and management: Other measure	Evaluation	Start date: 2014 Expected end date: 2030 Spatial scale: Whole town or city Source affected: Transport Indicator: Unknown Target emissions reduction: Unknown
Derby City Council_25	Introduce road works permit scheme	Complete	Public procurement: Other measure	Evaluation	Start date: 2014 Expected end date: 2030 Spatial scale: Whole town or city Source affected: Transport Indicator: Unknown Target emissions reduction: Unknown

Measure code	Description	Focus	Classification	Status	Other information
Derby City Council_26	Implement a range of travel planning and sustainable transport measures across the Council, local schools and businesses, and through a personalised travel planning service. Including home-working, travel awareness, and other measures.	Work carried out as part of LSTF and expanded under Access Fund	Traffic planning and management: Encouragement of shift of transport modes	Evaluation	Start date: 2014 Expected end date: 2030 Spatial scale: Whole town or city Source affected: Transport Indicator: Unknown Target emissions reduction: Unknown
Derby City Council_27	Increase the percentage of low floor buses operating in Derby.	Ongoing	Public procurement: Other measure	Evaluation	Start date: 2014 Expected end date: 2030 Spatial scale: Whole town or city Source affected: Transport Indicator: Unknown Target emissions reduction: Unknown
Derby City Council_28	Develop a new Strategic Bus Partnership with bus companies to encourage sustainable driving practices and new sustainable vehicles	Resource constrained	Public procurement: New vehicles, including low emission vehicles	Evaluation	Start date: 2014 Expected end date: 2030 Spatial scale: Whole town or city Source affected: Transport Indicator: Unknown Target emissions reduction: Unknown
Derby City Council_29	Increase the provision and use of park and ride facilities.	Resource-constrained	Public procurement: Other measure	Evaluation	Start date: 2014 Expected end date: 2030 Spatial scale: Whole town or city Source affected: Transport Indicator: Unknown Target emissions reduction: Unknown



Measure code	Description	Focus	Classification	Status	Other information
Derby City Council_30	The development or enabling of a city-centre cycling facility including cycle parking, hire, repair, maintenance, sales, showering, lockers and changing and increase the completed length of the strategic cycle network.	Completed as part of LSTF and expanded under Access Fund	Public procurement: Other measure	Evaluation	Start date: 2014 Expected end date: 2030 Spatial scale: Whole town or city Source affected: Transport Indicator: Unknown Target emissions reduction: Unknown
Derby City Council_31	Maintain and improve footway condition and signage for ease of pedestrian access	Ongoing	Traffic planning and management: Other measure	Evaluation	Start date: 2014 Expected end date: 2030 Spatial scale: Whole town or city Source affected: Transport Indicator: Unknown Target emissions reduction: Unknown
Derby City Council_32	New and improved street lighting	Ongoing	Traffic planning and management: Other measure	Evaluation	Start date: 2014 Expected end date: 2030 Spatial scale: Whole town or city Source affected: Transport Indicator: Unknown Target emissions reduction: Unknown
Derby City Council_33	Improve transport interchange and sustainable transport information offer in the city centre, district centres, schools and work places linking bus and rail station facilities and information for cyclists and pedestrians.	Ongoing LSTF and expanded under Access Fund	Public procurement: Other measure	Evaluation	Start date: 2014 Expected end date: 2030 Spatial scale: Whole town or city Source affected: Transport Indicator: Unknown Target emissions reduction: Unknown

Measure code	Description	Focus	Classification	Status	Other information
Derby City Council_34	Implement 'stop specific' information panels on all bus stops in Derby	Ongoing	Public procurement: Other measure	Evaluation	Start date: 2014 Expected end date: 2030 Spatial scale: Whole town or city Source affected: Transport Indicator: Unknown Target emissions reduction: Unknown
Derby City Council_35	Continue to provide and upgrade Real Time Information on bus routes across the city	Resource-constrained	Public procurement: Other measure	Evaluation	Start date: 2014 Expected end date: 2030 Spatial scale: Whole town or city Source affected: Transport Indicator: Unknown Target emissions reduction: Unknown
Derby City Council_36	Upgrade bus shelters	Resource-constrained	Public procurement: Other measure	Evaluation	Start date: 2014 Expected end date: 2030 Spatial scale: Whole town or city Source affected: Transport Indicator: Unknown Target emissions reduction: Unknown
Derby City Council_37	Investigate the development of a 'pavement parking' enforcement programme.	Completed in City Centre - expansion resource-constrained	Public procurement: Other measure	Evaluation	Start date: 2014 Expected end date: 2030 Spatial scale: Whole town or city Source affected: Transport Indicator: Unknown Target emissions reduction: Unknown

Measure code	Description	Focus	Classification	Status	Other information
Derby City Council_38	Implement intensive sustainable travel marketing and promotion campaign to raise awareness of travel choices including bus, cycle and car clubs/car share, information portals and training programmes	LSTF and expanded under Access Fund	Public procurement: Other measure	Evaluation	Start date: 2014 Expected end date: 2030 Spatial scale: Whole town or city Source affected: Transport Indicator: Unknown Target emissions reduction: Unknown
Derby City Council_39	Expand city wide cycle and pedestrian training, including adult, family and child, commuter and leisure trip training	Access Fund - Ongoing	Public procurement: Other measure	Evaluation	Start date: 2014 Expected end date: 2030 Spatial scale: Whole town or city Source affected: Transport Indicator: Unknown Target emissions reduction: Unknown
Derby City Council_40	Infrastructure improvements for the enhancement of major routes used by alternative modes to the private car, in consultation with local communities and stakeholders to improve accessibility to services and facilities	Ongoing	Traffic planning and management: Improvement of public transport	Evaluation	Start date: 2014 Expected end date: 2030 Spatial scale: Whole town or city Source affected: Transport Indicator: Unknown Target emissions reduction: Unknown
Derby City Council_41	Consider ways of bringing disused railway lines back into use, where they have been safeguarded in the City of Derby Local Plan.	Resource-constrained	Traffic planning and management: Other measure	Evaluation	Start date: 2014 Expected end date: 2030 Spatial scale: Whole town or city Source affected: Transport Indicator: Unknown Target emissions reduction: Unknown

Measure code	Description	Focus	Classification	Status	Other information
Derby City Council_42	Continue to support national aims to improve rail infrastructure, particularly Midlands Mainline electrification, and the development of High Speed Rail between Derby and London	Ongoing	Traffic planning and management: Other measure	Evaluation	Start date: 2014 Expected end date: 2030 Spatial scale: Whole town or city Source affected: Transport Indicator: Unknown Target emissions reduction: Unknown
Derby City Council_43	Lobby Network Rail and DfT Rail for improvements in rail emissions.	Ongoing	Traffic planning and management: Improvement of public transport	Evaluation	Start date: 2014 Expected end date: 2030 Spatial scale: Whole town or city Source affected: Transport Indicator: Unknown Target emissions reduction: Unknown
Derby City Council_44	Encourage bus operators to purchase replacement vehicles with the lowest available emission levels.	Ongoing (see also CAZ Project)	Public procurement: New vehicles, including low emission vehicles	Evaluation	Start date: 2014 Expected end date: 2030 Spatial scale: Whole town or city Source affected: Transport Indicator: Unknown Target emissions reduction: Unknown
Derby City Council_45	Continue to work to reduce emissions from industrial sources by regularly inspecting premises and enforcing legislation in accordance with government guidelines and the Environment Agency.	Ongoing	Public procurement: Other measure	Evaluation	Start date: 2014 Expected end date: 2030 Spatial scale: Whole town or city Source affected: Transport Indicator: Unknown Target emissions reduction: Unknown

Measure code	Description	Focus	Classification	Status	Other information
Derby City Council_46	Include measures to promote good practice on air quality issues to all Council employees via the Staff Travel Plan	Resource constrained	Other measure: Other measure	Evaluation	Start date: 2014 Expected end date: 2030 Spatial scale: Whole town or city Source affected: Transport Indicator: Unknown Target emissions reduction: Unknown
Derby City Council_47	Uttoxeter New Road (A516) Corridor Improvements	Resource-constrained	Traffic planning and management: Other measure	Evaluation	Start date: 2017 Expected end date: 2030 Spatial scale: Local Source affected: Transport Indicator: Unknown Target emissions reduction: Unknown
Derby City Council_48	Taxi Fleet emission improvement study and engagement programme	DEFRA AQ Grant	Permit systems and economic instruments: Introduction/increase of environment taxes	Evaluation	Start date: 2017 Expected end date: 2020 Spatial scale: Whole town or city Source affected: Transport Indicator: Unknown Target emissions reduction: Unknown
Derby City Council_49	A61 Route Improvements Scheme	Resource-constrained	Traffic planning and management: Other measure	Evaluation	Start date: 2017 Expected end date: 2030 Spatial scale: Local Source affected: Transport Indicator: Unknown Target emissions reduction: Unknown
Derby City Council_50	Support development of East Midlands Air Quality Network	Complete	Other measure: Other measure	Complete	Start date: 2015 Expected end date: 2016 Spatial scale: Regional Source affected: All Indicator: Unknown Target emissions reduction: Unknown

Measure code	Description	Focus	Classification	Status	Other information
Derby City Council_51	Commitment to provide annual report on air quality to Derbyshire Health Protection Board and Derby City Health and Well Being Board	Ongoing	Other measure: Other measure	Ongoing	Start date: 2016 Expected end date: 2016 Spatial scale: County-wide Source affected: All Indicator: Unknown Target emissions reduction: Unknown
Derby City Council_52	Support development of Derby and Derbyshire Air Quality Working Group	Complete	Other measure: Other measure	Ongoing	Start date: 2016 Expected end date: 2016 Spatial scale: County-wide Source affected: All Indicator: Unknown Target emissions reduction: Unknown
Derby City Council_53	Change line 7 Electric vehicle parking promotion scheme - Preferential parking spaces and charging regime for low emission vehicles	Ongoing	Traffic planning and management: Differentiation of parking fees	Evaluation	Start date: 2017 Expected end date: 2025 Spatial scale: Whole town or city Source affected: Transport Indicator: Unknown Target emissions reduction: Unknown
Derby City Council_54	Change line 5 - local authorities taking a lead in terms of their own and contractor vehicle operations and procurement in line with the CAZ framework	Ongoing	Public procurement: New vehicles, including low emission vehicles	Other	Start date: 2017 Expected end date: 2025 Spatial scale: Whole town or city Source affected: Transport Indicator: Unknown Target emissions reduction: Unknown
Derby City Council_55	Review of Derbyshire cycle infrastructure assets - identify strategic gaps	Ongoing	Traffic planning and management: Expansion of bicycle and pedestrian infrastructure	Implementation	Start date: 2016 Expected end date: 2020 Spatial scale: Regional Source affected: Transport Indicator: Unknown Target emissions reduction: Unknown

Measure code	Description	Focus	Classification	Status	Other information
Derby City Council_56	Review Derby Cycling Group route network and examine opportunities for improvements around Derby hospitals	Ongoing	Traffic planning and management: Expansion of bicycle and pedestrian infrastructure	Implementation	Start date: 2016 Expected end date: 2020 Spatial scale: Local Source affected: Transport Indicator: Unknown Target emissions reduction: Unknown
Derby City Council_57	Create air quality heat map to highlight areas of poorest air quality in Derby/Derbyshire	Ongoing	Public information and Education: Other mechanisms	Evaluation	Start date: 2016 Expected end date: 2020 Spatial scale: Local Source affected: Transport Indicator: Unknown Target emissions reduction: Unknown
Derby City Council_58	Undertake HIA to support implementation of Clean Air Zone	Ongoing	Public information and Education: Other mechanisms	Evaluation	Start date: 2017 Expected end date: 2020 Spatial scale: Whole town or city Source affected: All Indicator: Unknown Target emissions reduction: Unknown
Derby City Council_59	Review feasibility of Derbyshire text alert systems to reduce exposure amongst those with existing conditions	Resource-constrained	Public information and Education: Other mechanisms	Evaluation	Start date: 2017 Expected end date: 2025 Spatial scale: Regional Source affected: N/A Indicator: Unknown Target emissions reduction: Unknown
Derby City Council_60	Review available resources to promote awareness of poor air quality for those with existing chronic illness	Ongoing	Public information and Education: Other mechanisms	Evaluation	Start date: 2017 Expected end date: 2025 Spatial scale: Regional Source affected: N/A Indicator: Unknown Target emissions reduction: Unknown

Measure code	Description	Focus	Classification	Status	Other information
Derby City Council_61	Increase awareness of impacts of air quality on health across professional groups	Ongoing	Public information and Education: Other mechanisms	Evaluation	Start date: 2017 Expected end date: 2025 Spatial scale: Regional Source affected: N/A Indicator: Unknown Target emissions reduction: Unknown
Erewash Borough Council_1	Participate in energy efficiency campaigns to encourage industry, business and when replacing equipment to use low emission technology and provide information on granting schemes where appropriate.	N/A	Public information and Education: Leaflets	Implementation	Start date: 2013 Expected end date: 2015 Spatial scale: Local Source affected: Commercial and residential sources Indicator: Energy Efficiency advice to households; numbers of partnership event contributed to. Target emissions reduction: N/A
Erewash Borough Council_2	Liaise with the Highways Agency on the proposed scheme to widen the M1 motorway.	N/A	Traffic planning and management: Other measure	Implementation	Start date: 2010 Expected end date: 2010 Spatial scale: Local Source affected: Transport Indicator: Participation in Highways Agency Liaison Target emissions reduction: N/A
Erewash Borough Council_3	Act as a point of information for businesses and major fleet operators, individuals and other stakeholders in Erewash Borough Council for cleaner vehicle technologies, national schemes and grant systems for the use of alternative fuels.	N/A	Traffic planning and management: Freight transport measure	Implementation	Start date: 2007 Expected end date: 2007 Spatial scale: Local Source affected: Transport Indicator: Participate in the County Freight Quality Partnership (Derbyshire County Council) Target emissions reduction: N/A



Measure code	Description	Focus	Classification	Status	Other information
Erewash Borough Council_4	Provide training to Local Authority drivers to minimise emissions.	N/A	Other measure: Other measure	Implementation	Start date: 2014 Expected end date: 2014 Spatial scale: Local Source affected: Transport Indicator: Driving Efficiencies training scheme Target emissions reduction: N/A
Erewash Borough Council_5	Seek Freight Quality Partnerships to include reduction of air quality impact of freight as one of their key objectives.	N/A	Traffic planning and management: Freight transport measure	Implementation	Start date: 2007 Expected end date: 2007 Spatial scale: Local Source affected: Transport Indicator: Participation in County Freight Quality Partnership (Derbyshire County Council) Target emissions reduction: N/A
Erewash Borough Council_6	Act as a facilitator to freight and public transport operators to encourage maximum take-up of measures in nation programmes for improving fleet emissions.	N/A	Other measure: Other measure	Implementation	Start date: 2007 Expected end date: 2007 Spatial scale: Local Source affected: Transport Indicator: Number of vehicles with improved emission standards Target emissions reduction: N/A
Erewash Borough Council_7	Complete the survey of council employee travel patterns and implement a Council Green Travel Plan to maximise opportunities for pedestrians, cycling, public transport and multiple occupancy journeys	N/A	Traffic planning and management: Encouragement of shift of transport modes	Preparation	Start date: 2007 Expected end date: 2017 Spatial scale: Local Source affected: Transport Indicator: Survey of employee travel patterns Target emissions reduction: N/A

Measure code	Description	Focus	Classification	Status	Other information
Erewash Borough Council_8	Raise public and business awareness of existing transport choices and links to health through regular participation in campaigns and events.	N/A	Traffic planning and management: Encouragement of shift of transport modes	Preparation	Start date: 2007 Expected end date: 2017 Spatial scale: Local Source affected: Transport Indicator: Number of campaigns Target emissions reduction: N/A
Erewash Borough Council_9	Maximise access to and quality of road travel and public transport information	N/A	Traffic planning and management: Encouragement of shift of transport modes	Implementation	Start date: 2011 Expected end date: 2026 Spatial scale: Local Source affected: Transport Indicator: Various indicators within Local Transport Plan Target emissions reduction: N/A
Erewash Borough Council_10	Extend Green Travel Plan support to all stakeholders	N/A	Traffic planning and management: Encouragement of shift of transport modes	Implementation	Start date: 2011 Expected end date: 2026 Spatial scale: Local Source affected: Transport Indicator: Number of green travel plans implemented Target emissions reduction: N/A
Erewash Borough Council_11	Maximise possibilities for non-road transport modes for freight (e.g. rail).	N/A	Traffic planning and management: Freight transport measure	Implementation	Start date: 2011 Expected end date: 2026 Spatial scale: Local Source affected: Transport Indicator: Numbers of HGV movements taken off the roads Target emissions reduction: N/A

Measure code	Description	Focus	Classification	Status	Other information
Erewash Borough Council_12	Develop an integrated assessment tool for the region to allow the air quality impact of transport and land-use developments to be made. Use this tool in the planning process where significant change in emission are proposed.	N/A	Traffic planning and management: Other measure	Implementation	Start date: 2011 Expected end date: 2026 Spatial scale: Local Source affected: Transport Indicator: Use of assessment tool Target emissions reduction: N/A
Erewash Borough Council_13	Integrate the Air Quality Action Plan (AQAP) into the Local Transport Plan.	N/A	Traffic planning and management: Other measure	Implementation	Start date: 2011 Expected end date: 2026 Spatial scale: Local Source affected: Transport Indicator: N/A Target emissions reduction: N/A
Erewash Borough Council_14	Integrate the AQAP into the Unitary Development Plan, Land Use Plan and Community Plan	N/A	Other measure: Other measure	Implementation	Start date: 2011 Expected end date: 2026 Spatial scale: Local Source affected: Transport Indicator: N/A Target emissions reduction: N/A
Erewash Borough Council_15	Ensure continued use of existing mechanisms including supplementary planning guidance and section 106 agreements to manage air quality by assessing impact of new development and building best practice material, techniques and mitigation into the design	N/A	Other measure: Other measure	Implementation	Start date: 2007 Expected end date: 2020 Spatial scale: Local Source affected: Commercial and residential sources Indicator: Number of section 106 agreements Target emissions reduction: N/A

Measure code	Description	Focus	Classification	Status	Other information
Erewash Borough Council_16	Extend Green Travel Plan support to cover the public and private sector operating in the Borough and region	N/A	Traffic planning and management: Encouragement of shift of transport modes	Implementation	Start date: 2011 Expected end date: 2026 Spatial scale: Local Source affected: Transport Indicator: Number of green travel plans implemented Target emissions reduction: N/A
Erewash Borough Council_17	Participate in energy efficiency campaigns encouraging effective insulation and the use of renewable energy.	N/A	Other measure: Other measure	Implementation	Start date: 2007 Expected end date: 2020 Spatial scale: Local Source affected: Commercial and residential sources Indicator: Energy efficiency advice and event attended. Planning applications for renewable energy. Target emissions reduction: N/A
Erewash Borough Council_18	Raise awareness of sustainable waste management practices for use by residents and businesses within the Borough.	N/A	Public information and Education: Leaflets	Implementation	Start date: 2007 Expected end date: 2020 Spatial scale: Local Source affected: Commercial and residential sources Indicator: % of recycling rate Target emissions reduction: N/A
Erewash Borough Council_19	Taking Steps to accelerate the take up of cleaner vehicles	N/A	Traffic planning and management: Freight transport measure	Implementation	Start date: 2011 Expected end date: 2026 Spatial scale: Local Source affected: Transport Indicator: Emissions from Erewash Borough Council Fleet Target emissions reduction: N/A

Measure code	Description	Focus	Classification	Status	Other information
Erewash Borough Council_20	Further prioritising air quality as a key objective which Highways Agency success is measured where there are AQMAs	N/A	Traffic planning and management: Other measure	Implementation	Start date: 2010 Expected end date: 2026 Spatial scale: Local Source affected: Transport Indicator: Participation in Highways Agency Technical Liaison Committee Target emissions reduction: N/A
Gedling Borough Council_1	Park and Ride	The creation of a Park and Ride scheme	Traffic planning and management: Improvement of public transport	Other	Start date: 2013 Expected end date: 2019 Spatial scale: Local Source affected: Transport Indicator: Feasibility study Target emissions reduction: N/A
Gedling Borough Council_2a	Re-routing of freight operators	Restriction of vehicle types using road at certain times of the day.	Traffic planning and management: Other measure	Other	Start date: 2013 Expected end date: 2014 Spatial scale: Local Source affected: Transport Indicator: Feasibility study Target emissions reduction: N/A
Gedling Borough Council_2b	Re-routing of freight operators	Restricting the road as appears on route finders and Satellite Navigation Systems.	Traffic planning and management: Other measure	Other	Start date: 2013 Expected end date: 2014 Spatial scale: Local Source affected: Transport Indicator: Feasibility study Target emissions reduction: N/A

Measure code	Description	Focus	Classification	Status	Other information
Gedling Borough Council_2c	Re-routing of freight operators	Consider diverting HGVs - Oxclose Lane/Edwards Lane	Traffic planning and management: Other measure	Other	Start date: 2013 Expected end date: 2014 Spatial scale: Whole town or city Source affected: Transport Indicator: Feasibility study Target emissions reduction: N/A
Gedling Borough Council_3a	Traffic control and management	Consideration and installation of SCOOT/MOVA and other traffic signal efficiency improvements, including CCTV at appropriate junctions within the AQMA	Traffic planning and management: Other measure	Other	Start date: 2013 Expected end date: 2014 Spatial scale: Local Source affected: Transport Indicator: Feasibility study Target emissions reduction: N/A
Gedling Borough Council_3b	Traffic control and management	Nottinghamshire County and City Councils jointly fund the traffic control centre that monitors traffic movement and provides real time traffic control over many traffic signal installations	Traffic planning and management: Other measure	Other	Start date: 2013 Expected end date: 2019 Spatial scale: Whole town or city Source affected: Transport Indicator: Improved journey times Target emissions reduction: N/A
Gedling Borough Council_3c	Traffic control and management	Consideration of bus priority measures at traffic signal junctions	Traffic planning and management: Encouragement of shift of transport modes	Other	Start date: 2012 Expected end date: 2013 Spatial scale: Whole town or city Source affected: Transport Indicator: Increased patronage on public transport Target emissions reduction: N/A

Measure code	Description	Focus	Classification	Status	Other information
Gedling Borough Council_3d	Traffic control and management	A review of the 24 hour bus lane to consider potential impacts and benefits of changing existing restrictions was undertaken during 2013/14	Traffic planning and management: Other measure	Other	Start date: 2013 Expected end date: 2014 Spatial scale: Whole town or city Source affected: Transport Indicator: Feasibility study Target emissions reduction: N/A
Gedling Borough Council_3e	Traffic control and management	Effective co-ordination of street works to minimise traffic disruption and unnecessary congestion as part of the County Council's network management duty	Traffic planning and management: Other measure	Other	Start date: 2013 Expected end date: 2019 Spatial scale: Whole town or city Source affected: Transport Indicator: Improved journey times Target emissions reduction: N/A
Gedling Borough Council_3f	Traffic control and management	Effective management of incidents to minimise traffic disruption and unnecessary congestion as part of the County Council's network management duty	Traffic planning and management: Other measure	Other	Start date: 2013 Expected end date: 2019 Spatial scale: Whole town or city Source affected: Transport Indicator: Improved journey times Target emissions reduction: N/A
Gedling Borough Council_3g	Traffic control and management	Effective contingency planning to minimise traffic disruption and unnecessary congestion as part of the County Council's network management duty	Traffic planning and management: Other measure	Other	Start date: 2013 Expected end date: 2019 Spatial scale: Whole town or city Source affected: Transport Indicator: Improved journey times Target emissions reduction: N/A

Measure code	Description	Focus	Classification	Status	Other information
Gedling Borough Council_5a	Parking management and control	Ensure that car parking in and around the AQMA is managed and reviewed via: Civil parking enforcement	Traffic planning and management: Other measure	Other	Start date: 2013 Expected end date: 2019 Spatial scale: Whole town or city Source affected: Transport Indicator: Improved journey times Target emissions reduction: N/A
Gedling Borough Council_6a	Low emission zone	Consider feasibility of a low emission zone	Traffic planning and management: Low emission zones	Other	Start date: 2013 Expected end date: 2014 Spatial scale: Local Source affected: Transport Indicator: Feasibility study Target emissions reduction: N/A
Gedling Borough Council_7c	Improve links with local planning and Local Development Framework	Co-ordination of land-use planning and transport infrastructure (including through the Local Plan). Development of car parking standards that encourage cycling, walking and public transport use	Traffic planning and management: Encouragement of shift of transport modes	Other	Start date: 2013 Expected end date: 2019 Spatial scale: Local Source affected: Transport Indicator: N/a Target emissions reduction: N/A
Gedling Borough Council_7d	Improve links with local planning and Local Development Framework	Secure appropriate levels of developer contributions (Section 106 and/or CIL) for use on air quality improvement projects.	Traffic planning and management: Other measure	Other	Start date: 2013 Expected end date: 2019 Spatial scale: Local Source affected: Transport Indicator: Sums collected for AQ projects Target emissions reduction: N/A



Measure code	Description	Focus	Classification	Status	Other information
Gedling Borough Council_7f	Improve links with local planning and Local Development Framework	Use of planning conditions for Delivery Times, Travel Plans etc.; including enforcement to ensure compliance	Traffic planning and management: Other measure	Other	Start date: 2013 Expected end date: 2019 Spatial scale: Local Source affected: Transport Indicator: No of application conditioned Target emissions reduction: N/A
Gedling Borough Council_8a	Improving links with local transport strategy	Continue links with both County and City transport planners to ensure AQAP is considered in future transport planning	Traffic planning and management: Other measure	Other	Start date: 2013 Expected end date: 2019 Spatial scale: Local Source affected: Transport Indicator: N/a Target emissions reduction: N/A
Gedling Borough Council_9b	Target reductions in emissions from buses	Promotion of the benefits of Eco-driving training for drivers	Public procurement: New vehicles, including low emission vehicles	Other	Start date: 2012 Expected end date: 2019 Spatial scale: Local Source affected: Transport Indicator: N/a Target emissions reduction: N/A
Gedling Borough Council_9c	Target reductions in emissions from buses	Ongoing delivery of Quality Bus Partnerships through Gedling Borough. (Mansfield and Nottingham City)	Public procurement: Other measure	Other	Start date: 2013 Expected end date: 2019 Spatial scale: Local Source affected: Transport Indicator: Increased patronage on public transport Target emissions reduction: N/A

Measure code	Description	Focus	Classification	Status	Other information
Gedling Borough Council_9d	Target reductions in emissions from buses	Encouraging the use of emissions standards when procuring school bus contracts and supported bus services that operate within the AQMA	Public procurement: Other measure	Other	Start date: 2013 Expected end date: 2019 Spatial scale: Local Source affected: Transport Indicator: Feasibility study Target emissions reduction: N/A
Gedling Borough Council_14c	Communication and education - awareness raising of local air quality issues	Tackling the school run - communication with schools and parents	Public information and Education: Other mechanisms	Other	Start date: 2013 Expected end date: 2019 Spatial scale: Local Source affected: Transport Indicator: Survey Target emissions reduction: N/A
Gedling Borough Council_15b	Travel plans	Nottinghamshire County Council to review travel plan for its sites within or close to the AQMA	Traffic planning and management: Other measure	Other	Start date: 2013 Expected end date: 2019 Spatial scale: Local Source affected: Transport Indicator: Review of NCC travel plans Target emissions reduction: N/A
Gedling Borough Council_15c	Travel plans	Continue to support the implementation of school travel plans	Traffic planning and management: Other measure	Other	Start date: 2013 Expected end date: 2019 Spatial scale: Local Source affected: Transport Indicator: Survey Target emissions reduction: N/A
Gedling Borough Council_15d	Travel plans	Work with local businesses/ organisations to encourage the development and implementation of travel plans	Traffic planning and management: Other measure	Other	Start date: 2014 Expected end date: 2019 Spatial scale: Local Source affected: Transport Indicator: Outputs from travel plan project Target emissions reduction: N/A

Measure code	Description	Focus	Classification	Status	Other information
Gedling Borough Council_16a	Promoting travel choices	Undertake personalised travel planning within Gedling borough	Traffic planning and management: Encouragement of shift of transport modes	Other	Start date: 2014 Expected end date: 2019 Spatial scale: Local Source affected: Transport Indicator: Outputs from travel plan project Target emissions reduction: N/A
Gedling Borough Council_16b	Promoting travel choices	Establishment of a City Car Club and consideration of extending this into the county	Traffic planning and management: Encouragement of shift of transport modes	Other	Start date: 2013 Expected end date: 2019 Spatial scale: Local Source affected: Transport Indicator: Outputs from city car club Target emissions reduction: N/A
Gedling Borough Council_16c	Promoting travel choices	The promotion and facilitation of car sharing schemes, www.nottinghamshare.com was launched in April 2006.	Traffic planning and management: Encouragement of shift of transport modes	Other	Start date: 2006 Expected end date: 2019 Spatial scale: Local Source affected: Transport Indicator: Uptake of scheme Target emissions reduction: N/A
Gedling Borough Council_16d	Promoting travel choices	Residential Travel Packs, to be issued to all new built homes identified through planning process; promotion of walking, cycling and public transport	Traffic planning and management: Encouragement of shift of transport modes	Other	Start date: 2014 Expected end date: 2019 Spatial scale: Local Source affected: Transport Indicator: Development of travel pack Target emissions reduction: N/A

Measure code	Description	Focus	Classification	Status	Other information
Gedling Borough Council_17a	Public transport	Development of ITSO smartcard ticketing	Traffic planning and management: Other measure	Other	Start date: 2007 Expected end date: 2019 Spatial scale: Local Source affected: Transport Indicator: Increased patronage on public transport Target emissions reduction: N/A
Gedling Borough Council_17b	Public transport	Deliver the free countywide off-peak concessionary fare scheme for the over 60s and disabled. Consideration of introduction of concessionary fares for young people	Other measure: Other measure	Other	Start date: 2006 Expected end date: 2019 Spatial scale: Whole town or city Source affected: Transport Indicator: Uptake of scheme Target emissions reduction: N/A
Gedling Borough Council_17c	Public transport	Investigate and publicise web based journey planners. Develop and undertake annual production of marketing literature	Traffic planning and management: Other measure	Other	Start date: 2013 Expected end date: 2019 Spatial scale: Local Source affected: Transport Indicator: Improved journey times Target emissions reduction: N/A
Gedling Borough Council_17d	Public transport	Review, install/replace flagpoles/timetable cases along key AQMA corridors	Traffic planning and management: Improvement of public transport	Other	Start date: 2013 Expected end date: 2014 Spatial scale: Local Source affected: Transport Indicator: Increased patronage on public transport Target emissions reduction: N/A

Measure code	Description	Focus	Classification	Status	Other information
Gedling Borough Council_17e	Public transport	Consider bus provision on the A60 and surrounding area. (Service review)	Traffic planning and management: Improvement of public transport	Other	Start date: 2013 Expected end date: 2015 Spatial scale: Local Source affected: Transport Indicator: Increased patronage on public transport Target emissions reduction: N/A
Gedling Borough Council_17f	Public transport	Install 'real time' bus information along key AQMA corridors	Traffic planning and management: Improvement of public transport	Other	Start date: 2013 Expected end date: 2013 Spatial scale: Local Source affected: Transport Indicator: Increased patronage on public transport Target emissions reduction: N/A
Gedling Borough Council_17g	Public transport	Consider capacity increases on the GO2 services along the A60 corridor	Traffic planning and management: Other measure	Other	Start date: 2013 Expected end date: 2019 Spatial scale: Local Source affected: Transport Indicator: Increased patronage on public transport Target emissions reduction: N/A
Gedling Borough Council_18a	To encourage members of the community to adopt cycling and walking as alternatives to using private vehicles	Develop and undertake annual cycling promotional marketing campaigns/production of literature	Traffic planning and management: Encouragement of shift of transport modes	Other	Start date: 2013 Expected end date: 2019 Spatial scale: Local Source affected: Transport Indicator: Improved journey times, increased active travel Target emissions reduction: N/A

Measure code	Description	Focus	Classification	Status	Other information
Gedling Borough Council_18b	To encourage members of the community to adopt cycling and walking as alternatives to using private vehicles	Deliver adult and child cycle training	Traffic planning and management: Encouragement of shift of transport modes	Other	Start date: 2013 Expected end date: 2019 Spatial scale: Local Source affected: Transport Indicator: Uptake of scheme Target emissions reduction: N/A
Gedling Borough Council_18c	To encourage members of the community to adopt cycling and walking as alternatives to using private vehicles	Consider the use of advance cycle stop lines at feasible junctions within the AQMA	Traffic planning and management: Encouragement of shift of transport modes	Other	Start date: 2013 Expected end date: 2015 Spatial scale: Local Source affected: Transport Indicator: Improved journey times, increased active travel Target emissions reduction: N/A
Gedling Borough Council_18e	To encourage members of the community to adopt cycling and walking as alternatives to using private vehicles	Develop and undertake annual walking promotional marketing campaigns/production of literature.	Traffic planning and management: Encouragement of shift of transport modes	Other	Start date: 2013 Expected end date: 2019 Spatial scale: Local Source affected: Transport Indicator: Improved journey times, increased active travel Target emissions reduction: N/A
Gedling Borough Council_18f	To encourage members of the community to adopt cycling and walking as alternatives to using private vehicles	Consider walking and cycling infrastructure and facility enhancements	Traffic planning and management: Encouragement of shift of transport modes	Other	Start date: 2013 Expected end date: 2019 Spatial scale: Local Source affected: Transport Indicator: Improved journey times, increased active travel Target emissions reduction: N/A

Measure code	Description	Focus	Classification	Status	Other information
Gedling Borough Council_19	Ensure that collections around the AQMA occur outside of the rush hour.	Reduce traffic congestion along the AQMA.	Traffic planning and management: Freight transport measure	Other	Start date: 2013 Expected end date: 2019 Spatial scale: Local Source affected: Transport Indicator: Review of collection timetables Target emissions reduction: N/A
Gedling Borough Council_20	Parking Management and Control Continual review of car parking charging, to promote public transport options	Promote public transport through review of car parking arrangements.	Other measure: Other measure	Other	Start date: 2013 Expected end date: 2019 Spatial scale: Local Source affected: Transport Indicator: Improved journey times and bus patronage Target emissions reduction: N/A
Gedling Borough Council_21	Ensure sustainable development on vacant sites within and in the vicinity of the AQMA.	Local planning considerations aim to mitigate the cumulative negative air quality impacts of new development.	Other measure: Other measure	Other	Start date: 2013 Expected end date: 2019 Spatial scale: Local Source affected: Other, please specify Indicator: No. of AQ impact assessments related to AQMA Target emissions reduction: N/A
Gedling Borough Council_22	Ensure AQAP and AQMA are considered in future planning policy frameworks (Local Plans).	Local planning considerations aim to mitigate the cumulative negative air quality impacts of new development.	Other measure: Other measure	Other	Start date: 2013 Expected end date: 2019 Spatial scale: Local Source affected: Transport Indicator: Ongoing consultation with Core Strategy development (see Section 6) Target emissions reduction: N/A

Measure code	Description	Focus	Classification	Status	Other information
Gedling Borough Council_23	Co-ordination of land-use planning and transport infrastructure (including through the Local Plan). Development of car parking standards that encourage cycling, walking and public transport use.	Local planning considerations aim to mitigate the cumulative negative air quality impacts of new development.	Other measure: Other measure	Other	Start date: 2013 Expected end date: 2019 Spatial scale: Local Source affected: Other, please specify Indicator: N/a Target emissions reduction: N/A
Gedling Borough Council_24	Secure appropriate levels of developer contributions (Section 106 and/or CIL) for use on air quality improvement projects. Use of collected development control contributions to provide cycling, walking and public transport improvements within the AQMA.	Local planning considerations aim to mitigate the cumulative negative air quality impacts of new development.	Other measure: Other measure	Other	Start date: 2013 Expected end date: 2019 Spatial scale: Local Source affected: Other, please specify Indicator: Sums collected for air quality projects Target emissions reduction: N/A
Gedling Borough Council_25	Development of an Air Quality Supplementary Planning Document (SPD)	N/A	Other measure: Other measure	Other	Start date: 2013 Expected end date: 2019 Spatial scale: Local Source affected: Other, please specify Indicator: Development of SPD Target emissions reduction: N/A
Gedling Borough Council_26	ECOStars Fleet Recognition Scheme. Promotion of the benefits of Eco-driving training for drivers.	Target reduced emissions from buses operating within the AQMA.	Other measure: Other measure	Other	Start date: 2011 Expected end date: 2015 Spatial scale: Local Source affected: Transport Indicator: Scheme membership Target emissions reduction: N/A



Measure code	Description	Focus	Classification	Status	Other information
Gedling Borough Council_27	ECOStars Fleet Recognition Scheme. Promotion of the benefits of Eco-driving training for drivers.	Target reduced emissions from HGV's and LGV's operating within the AQMA	Other measure: Other measure	Other	Start date: 2011 Expected end date: 2015 Spatial scale: Local Source affected: Transport Indicator: Scheme membership Target emissions reduction: N/A
Gedling Borough Council_28	Promotion of low emission vehicles through taxi licensing.	Target reduced emissions from Taxi's operating within the AQMA	Other measure: Other measure	Other	Start date: 2013 Expected end date: 2019 Spatial scale: Local Source affected: Transport Indicator: Review of Taxi Licence criteria Target emissions reduction: N/A
Gedling Borough Council_29	Gedling Borough membership of ECOStars scheme.	Target reduced emissions from Council fleet vehicles and Council contract fleet vehicles operating within AQMA.	Other measure: Other measure	Other	Start date: 2011 Expected end date: 2019 Spatial scale: Local Source affected: Transport Indicator: Membership Target emissions reduction: N/A
Gedling Borough Council_30	Ensuring new vehicles procured are cleanest possible.	Target reduced emissions from Council fleet vehicles and Council contract fleet vehicles operating within AQMA.	Other measure: Other measure	Other	Start date: 2013 Expected end date: 2019 Spatial scale: Local Source affected: Transport Indicator: Indictors linked to the GBC Sustainability Strategy and Action Plan Target emissions reduction: N/A

Measure code	Description	Focus	Classification	Status	Other information
Gedling Borough Council_31	Run Eco-driving training course for officers using own and GBC vehicles for work.	Target reduced emissions from Council fleet vehicles and Council contract fleet vehicles operating within AQMA.	Other measure: Other measure	Other	Start date: 2013 Expected end date: 2014 Spatial scale: Local Source affected: Transport Indicator: Indicators linked to the GBC Sustainability Strategy and Action Plan Target emissions reduction: N/A
Gedling Borough Council_32	Consider alternative fuelled 'pool vehicles'	Target reduced emissions from Council fleet vehicles and Council contract fleet vehicles operating within AQMA.	Other measure: Other measure	Other	Start date: 2013 Expected end date: 2019 Spatial scale: Local Source affected: Transport Indicator: Indicators linked to the GBC Sustainability Strategy and Action Plan Target emissions reduction: N/A
Gedling Borough Council_33	GBC Green Procurement (emission standards for vehicles making deliveries to the Council).	Target reduced emissions from Council fleet vehicles and Council contract fleet vehicles operating within AQMA.	Other measure: Other measure	Other	Start date: 2013 Expected end date: 2019 Spatial scale: Local Source affected: Transport Indicator: Indicators linked to the GBC Sustainability Strategy and Action Plan Target emissions reduction: N/A
Gedling Borough Council_34	GBC consider installing electric charging points for visitors and staff.	Encourage the uptake of alternative fuels with infrastructure improvements.	Traffic planning and management: Other measure	Other	Start date: 2013 Expected end date: 2014 Spatial scale: Local Source affected: Transport Indicator: Indicators linked to the GBC Sustainability Strategy and Action Plan Target emissions reduction: N/A

Measure code	Description	Focus	Classification	Status	Other information
Gedling Borough Council_35	Consider a wider network of charging points.	Encourage the uptake of alternative fuels with infrastructure improvements.	Traffic planning and management: Other measure	Other	Start date: 2013 Expected end date: 2015 Spatial scale: Local Source affected: Transport Indicator: Indicators linked to the GBC Sustainability Strategy and Action Plan Target emissions reduction: N/A
Gedling Borough Council_36	Design and erect AQMA signs at various locations	To increase awareness of local air quality issues and encourage change in behaviour that will contribute to improving local air quality.	Public information and Education: Other mechanisms	Other	Start date: 2012 Expected end date: 2030 Spatial scale: Local Source affected: Transport Indicator: Feasibility assessment Target emissions reduction: N/A
Gedling Borough Council_37	Roadside Vehicle Emissions Testing (RVET)	To increase awareness of local air quality issues and encourage change in behaviour that will contribute to improving local air quality.	Other measure: Other measure	Other	Start date: 2013 Expected end date: 2030 Spatial scale: Local Source affected: Transport Indicator: Carry out RVET day Target emissions reduction: N/A
Gedling Borough Council_38	Undertake a publicity campaign to raise awareness of the A60 AQMA.	To increase awareness of local air quality issues and encourage change in behaviour that will contribute to improving local air quality.	Public information and Education: Other mechanisms	Other	Start date: 2013 Expected end date: 2019 Spatial scale: Local Source affected: Transport Indicator: Publication of relevant promotional material Target emissions reduction: N/A

Measure code	Description	Focus	Classification	Status	Other information
Gedling Borough Council_39	Review/refresh Gedling Borough Council Travel Plan;	To encourage a shift to more sustainable forms of travel, or reducing the need for travel.	Traffic planning and management: Encouragement of shift of transport modes	Other	Start date: 2013 Expected end date: 2019 Spatial scale: Local Source affected: Transport Indicator: Review GBC travel plan; improved journey times; increased bus patronage; increased active travel Target emissions reduction: N/A
Gedling Borough Council_40	Gedling Borough Council to hold 'Car Free Days' to encourage staff to cycle or walk to work.	To encourage the shift away from the use of private motor vehicles for travelling to more sustainable forms of transport, or reducing the need for travel.	Traffic planning and management: Encouragement of shift of transport modes	Other	Start date: 2013 Expected end date: 2019 Spatial scale: Local Source affected: Transport Indicator: No. of 'car free days' Target emissions reduction: N/A
Leicester City Council_1	Air Quality Action Plan	Upgraded Air Quality Plan for Leicester	Other measure: Other measure	Implementation	Start date: 2015 Expected end date: 2025 Spatial scale: Whole town or city Source affected: Transport Indicator: Review in 2018 and 2023 Target emissions reduction: < 1%
Leicester City Council_2	AQGS LestAIR	Low Emission Strategy study for Leicester	Other measure: Other measure	Evaluation	Start date: 2012 Expected end date: 2012 Spatial scale: Whole town or city Source affected: Transport Indicator: Final report delivered Target emissions reduction: <0.1 %

Measure code	Description	Focus	Classification	Status	Other information
Leicester City Council_4	Reduction of bus emissions _Breathe I	Retrofitting of 32 buses on Melton road corridor	Public procurement: Other measure	Implementation	Start date: 2013 Expected end date: 2017 Spatial scale: Local Source affected: Transport Indicator: No of buses retrofitted Target emissions reduction: <0.5%
Leicester City Council_5	Reduction of bus emissions _Breathe II	Retrofitting 5 buses from Centerbus fleet on Melton road corridor	Other measure: Other measure	Implementation	Start date: 2014 Expected end date: 2018 Spatial scale: Local Source affected: Transport Indicator: No of buses retrofitted Target emissions reduction: <0.1%
Leicester City Council_6	Low emission zone for buses	Emission standards for buses using new Haymarket Bus Station	Traffic planning and management: Low emission zones	Evaluation	Start date: 2017 Expected end date: 2018 Spatial scale: Whole town or city Source affected: Transport Indicator: LEZ Buses in place Target emissions reduction: <0.1%
Leicester City Council_7	Ultra Low emission zone	LestAir AQGS project	Traffic planning and management: Low emission zones	Evaluation	Start date: 2022 Expected end date: 2025 Spatial scale: Whole town or city Source affected: Transport Indicator: ULEZ in place Target emissions reduction: <0.1%

Measure code	Description	Focus	Classification	Status	Other information
Leicester City Council_8	Investigation to introduce gas powered buses	AQGS bid - business case to investigate an introduction of gas powered buses in Leicester	Public procurement: Other measure	Preparation	Start date: 2015 Expected end date: 2015 Spatial scale: Whole town or city Source affected: Transport Indicator: Delivery of final report Target emissions reduction: <0.0%
Leicester City Council_9	Encourage bus, taxi and freight operators to introduce LEV's	OLEV bids to introduce LEVs to Leicester - taxis, buses	Public procurement: New vehicles, including low emission vehicles	Planning	Start date: 2015 Expected end date: 2025 Spatial scale: Whole town or city Source affected: Transport Indicator: Obtaining grant for LEVs Target emissions reduction: <0.1%
Leicester City Council_10	FQP - Improved freight operations	Freight operators in Leicester and Leicestershire	Other measure: Other measure	Implementation	Start date: 2001 Expected end date: 2030 Spatial scale: Whole agglomeration Source affected: Transport Indicator: Dialog between LCC and freight operators Target emissions reduction: <0.01%
Leicester City Council_11	Investigate urban freight consolidation centre	AQGS project : Revised air quality action plan interventions	Traffic planning and management: Freight transport measure	Evaluation	Start date: 2017 Expected end date: 2017 Spatial scale: Whole agglomeration Source affected: Transport Indicator: Final report delivered Target emissions reduction: <0.1%

Measure code	Description	Focus	Classification	Status	Other information
Leicester City Council_12	Partnership with bus operators	Quality Bus Partnership with bus operators in Leicester	Public procurement: Other measure	Implementation	Start date: 2001 Expected end date: 2023 Spatial scale: Whole agglomeration Source affected: Transport Indicator: Dialog between LCC and bus operators Target emissions reduction: <0.1%
Leicester City Council_13	Greener driving training for LCC and others	Cleaner driving aimed at reducing pollution	Other measure: Other measure	Implementation	Start date: 2008 Expected end date: 2030 Spatial scale: Whole agglomeration Source affected: Transport Indicator: Ongoing project Target emissions reduction: <0.1%
Leicester City Council_14	Promote ULEV infrastructure (OLEV)	Electric cars -Plugged In Places, installation of charging points for electric vehicles	Public procurement: New vehicles, including low emission vehicles	Planning	Start date: 2012 Expected end date: 2030 Spatial scale: Whole agglomeration Source affected: Transport Indicator: No of electric sockets installed Target emissions reduction: <0.1%
Leicester City Council_15	Fuelling Infrastructure incl. shared arrangements	AQGS study for gas powered buses	Public procurement: Other measure	Planning	Start date: 2015 Expected end date: 2015 Spatial scale: Whole agglomeration Source affected: Transport Indicator: Final report delivered Target emissions reduction: <0.1%

Measure code	Description	Focus	Classification	Status	Other information
Leicester City Council_16	Progressive reduction in emissions from LCC fleet	LCC fleet reviews	Public procurement: Other measure	Implementation	Start date: 2001 Expected end date: 2030 Spatial scale: Whole town or city Source affected: Transport Indicator: Annual reports Target emissions reduction: <0.1%
Leicester City Council_17	Electric vehicles trial	Trial of 2 electric vehicles in LCC fleet	Other measure: Other measure	Implementation	Start date: 2014 Expected end date: 2015 Spatial scale: Local Source affected: Transport Indicator: Uptake of 2 electric vehicles Target emissions reduction: <0.1%
Leicester City Council_18	Essential user status review	Reduce the no of vehicles used by staff	Other measure: Other measure	Implementation	Start date: 2014 Expected end date: 2015 Spatial scale: Whole town or city Source affected: Transport Indicator: Assessment completed Target emissions reduction: <0.1%
Leicester City Council_19	LCC Fleet Review	Review of council fleet	Other measure: Other measure	Implementation	Start date: 2014 Expected end date: 2015 Spatial scale: Whole town or city Source affected: Transport Indicator: Finished assessment of the whole fleet Target emissions reduction: <0.1%



Measure code	Description	Focus	Classification	Status	Other information
Leicester City Council_20	Reduce harmful emissions from taxis	Licensing Policy - taxis to Euro IV standard receive 50% discount on licensing fee	Permit systems and economic instruments: Introduction/increase of environment taxes	Implementation	Start date: 2008 Expected end date: 2030 Spatial scale: Whole town or city Source affected: Transport Indicator: No of licences issued Target emissions reduction: <0.2%
Leicester City Council_21	Support electrification of Midland Main Line	Electrification of Midland Mainline through Leicester	Public procurement: Other measure	Other	Start date: 2012 Expected end date: 2020 Spatial scale: Local Source affected: Transport Indicator: Electrification complete Target emissions reduction: <0.1%
Leicester City Council_22	Implement Sustainable Public Procurement Guide	LCC Procurement Guide	Other measure: Other measure	Preparation	Start date: 2015 Expected end date: 2015 Spatial scale: Whole town or city Source affected: Transport Indicator: New guide delivered Target emissions reduction: <0.1%

Measure code	Description	Focus	Classification	Status	Other information
Leicester City Council_23	Phase II Connecting Leicester - Walking & Cycling	A scheme to create connections to provide a safe, family and pedestrian orientated city centre. Connecting the different parts of the city centre and reducing the dominance of roads to create an attractive environment for local people to enjoy their historic city. It will also help businesses to flourish and attract new visitors.	Traffic planning and management: Encouragement of shift of transport modes	Implementation	Start date: 2015 Expected end date: 2019 Spatial scale: Whole town or city Source affected: Other, please specify Indicator: Scheme implemented Target emissions reduction: <0.1%
Leicester City Council_24	Cycling routes	Connecting Leicester	Traffic planning and management: Encouragement of shift of transport modes	Implementation	Start date: 2012 Expected end date: 2030 Spatial scale: Whole town or city Source affected: Transport Indicator: No of Cycling routes implemented Target emissions reduction: <0.5%
Leicester City Council_25	Carbon action planning and the behavioural change	Planning for addressing the behavioural change	Other measure: Other measure	Implementation	Start date: 2014 Expected end date: 2015 Spatial scale: Whole town or city Source affected: Transport Indicator: No of actions implemented Target emissions reduction: <0.01%

Measure code	Description	Focus	Classification	Status	Other information
Leicester City Council_26	Continue to increase the number of children walking and cycling to school walking and cycling to school through the Walk to School and Bike It programmes, further to the 16.7% overall increase achieved last year	Promoting walking and cycling to schools	Traffic planning and management: Encouragement of shift of transport modes	Implementation	Start date: 2014 Expected end date: 2015 Spatial scale: Whole town or city Source affected: Transport Indicator: No of children engaged Target emissions reduction: <0.01%
Leicester City Council_27	Council home working and flexible hours	N/A	Other measure: Other measure	Implementation	Start date: 2008 Expected end date: 2030 Spatial scale: Whole agglomeration Source affected: Transport Indicator: Scheme implemented Target emissions reduction: <0.1%
Leicester City Council_28	Leicester City Council website	Air Quality information - updated website	Public information and Education: Internet	Implementation	Start date: 2015 Expected end date: 2015 Spatial scale: Whole town or city Source affected: Other, please specify Indicator: Updated website Target emissions reduction: <0.1%
Leicester City Council_29	Engage 100 small businesses to carry out staff cycle training charity B-Inspired, providing staff cycle training and advice on how to reduce business travel by car	Promoting alternative modes of transport	Traffic planning and management: Encouragement of shift of transport modes	Implementation	Start date: 2014 Expected end date: 2015 Spatial scale: Whole town or city Source affected: Transport Indicator: No of businesses engaged Target emissions reduction: <0.01%

Measure code	Description	Focus	Classification	Status	Other information
Leicester City Council_30	Host a number of green events at Curve theatre throughout the year including National Recycling Week by promoting recycling to both staff and visitors, and Earth Hour	Public Information	Traffic planning and management: Encouragement of shift of transport modes	Implementation	Start date: 2014 Expected end date: 2015 Spatial scale: Whole town or city Source affected: Transport Indicator: No of events organised Target emissions reduction: <0.01%
Leicester City Council_31	Involve 40,000 employees through the Large Employers' engagement programme Employers Engagement Programme, running travel roadshows to encourage behavioural change	Promoting alternative modes of transport	Traffic planning and management: Encouragement of shift of transport modes	Implementation	Start date: 2014 Expected end date: 2015 Spatial scale: Whole town or city Source affected: Transport Indicator: Engagement with employers Target emissions reduction: <0.1%
Leicester City Council_32	Involve over 25,000 people in organised bike rides cycling activity events through our Summer of Cycling programme. This will include the Ride Leicester Festival which will have the Castle Classic race and family-friendly Sky Ride	Annual bike rides organised - Skyride	Traffic planning and management: Encouragement of shift of transport modes	Implementation	Start date: 2014 Expected end date: 2015 Spatial scale: Whole town or city Source affected: Transport Indicator: Engagement of general public Target emissions reduction: <0.1%
Leicester City Council_33	JOAQUIN European Project	EU funded project, information to general public about AQ - website. Also information to policy makers about improving AQ through various schemes and tools	Other measure: Other measure	Evaluation	Start date: 2011 Expected end date: 2015 Spatial scale: Whole town or city Source affected: Transport Indicator: Website for general public, Decision making tool for AQ specialists Target emissions reduction: <0.1%

Measure code	Description	Focus	Classification	Status	Other information
Leicester City Council_34	Leicestershire Sustainable Travel Challenge web site	Promoting walking, cycling , public transport and care share	Traffic planning and management: Encouragement of shift of transport modes	Implementation	Start date: 2014 Expected end date: 2016 Spatial scale: Whole agglomeration Source affected: Transport Indicator: No of people who joined the website Target emissions reduction: <0.1%
Leicester City Council_35	Personal route planner	Individual travel plans	Traffic planning and management: Encouragement of shift of transport modes	Implementation	Start date: 2007 Expected end date: 2017 Spatial scale: Whole agglomeration Source affected: Transport Indicator: No of plans completed Target emissions reduction: <0.1%
Leicester City Council_36	Provide local businesses with grants of up to 5,000 to put towards sustainable transport methods for staff such as pool bike systems and shuttle buses	Promoting alternative modes of transport	Traffic planning and management: Encouragement of shift of transport modes	Implementation	Start date: 2014 Expected end date: 2015 Spatial scale: Whole town or city Source affected: Transport Indicator: Grants provided Target emissions reduction: <0.01%
Leicester City Council_37	Secure funding to complete an Area Wide Travel Plan Travel Plan for the creative industries in the Cultural Quarter to promote car sharing, cycling and cut congestion	Travel plan	Traffic planning and management: Encouragement of shift of transport modes	Implementation	Start date: 2015 Expected end date: 2015 Spatial scale: Whole town or city Source affected: Transport Indicator: Completion of the travel plan Target emissions reduction: <0.01%

Measure code	Description	Focus	Classification	Status	Other information
Leicester City Council_38	Sign up a further 1,500 people to Leics. Car Share Scheme Leicestershire, a car sharing scheme aiming to reduce the number of single occupancy vehicles in the city	Promoting car sharing	Traffic planning and management: Encouragement of shift of transport modes	Implementation	Start date: 2014 Expected end date: 2015 Spatial scale: Whole agglomeration Source affected: Transport Indicator: No of people signed for the scheme Target emissions reduction: <0.1%
Leicester City Council_39	Travel Planning	Plans in place to reduce single vehicle occupancy, increase the number of sustainable modes of travel and raise awareness	Traffic planning and management: Encouragement of shift of transport modes	Implementation	Start date: 2001 Expected end date: 2030 Spatial scale: Whole town or city Source affected: Transport Indicator: % of change in mode of travel Target emissions reduction: <0.1%
Leicester City Council_40	Walking promotion	Promoting walking : Ramblers, Livingstreets, Sustrans	Traffic planning and management: Encouragement of shift of transport modes	Implementation	Start date: 2011 Expected end date: 2030 Spatial scale: Whole town or city Source affected: Transport Indicator: No of people joining walks, walking to school, % shift in behavioural change Target emissions reduction: <0.1%
Leicester City Council_41	Improved bus facilities and circulation	New Bus Station - Haymarket	Traffic planning and management: Improvement of public transport	Implementation	Start date: 2015 Expected end date: 2015 Spatial scale: Local Source affected: Transport Indicator: Scheme implemented Target emissions reduction: <0.1%

Measure code	Description	Focus	Classification	Status	Other information
Leicester City Council_42	Improved buses	Lower floor buses	Traffic planning and management: Improvement of public transport	Implementation	Start date: 2001 Expected end date: 2014 Spatial scale: Whole town or city Source affected: Transport Indicator: No of buses with low floors Target emissions reduction: <0.1%
Leicester City Council_43	Park and Ride schemes	2 new Park and Ride car parks opened since 2008	Traffic planning and management: Encouragement of shift of transport modes	Implementation	Start date: 2001 Expected end date: 2011 Spatial scale: Whole town or city Source affected: Transport Indicator: 2 new park and ride car parks implemented Target emissions reduction: <0.1%
Leicester City Council_44	Subsidised bus fares	Subsidised bus fares for elderly, disabled and jobseekers	Traffic planning and management: Encouragement of shift of transport modes	Implementation	Start date: 2001 Expected end date: 2030 Spatial scale: Whole agglomeration Source affected: Transport Indicator: No of concessionary bus pass card holders Target emissions reduction: 0.001
Leicester City Council_45	Public Transport Information	Real time information system	Traffic planning and management: Improvement of public transport	Implementation	Start date: 2015 Expected end date: 2016 Spatial scale: Whole agglomeration Source affected: Transport Indicator: City wide system available Target emissions reduction: <0.1%

Measure code	Description	Focus	Classification	Status	Other information
Leicester City Council_46	Off bus ticketing	Smart ticketing project	Traffic planning and management: Improvement of public transport	Implementation	Start date: 2008 Expected end date: 2030 Spatial scale: Whole agglomeration Source affected: Transport Indicator: City wide system in place Target emissions reduction: <0.01%
Leicester City Council_47	Bikebility	Cycle training for children	Traffic planning and management: Encouragement of shift of transport modes	Implementation	Start date: 2008 Expected end date: 2030 Spatial scale: Whole town or city Source affected: Transport Indicator: 1800 children to participate Target emissions reduction: <0.1%
Leicester City Council_48	Bike parks at events	To provide bike parts at festivals	Traffic planning and management: Encouragement of shift of transport modes	Implementation	Start date: 2008 Expected end date: 2030 Spatial scale: Whole town or city Source affected: Transport Indicator: 50 bike parking spaces at events Target emissions reduction: <0.1%
Leicester City Council_49	Ride Festival in Leicester	Castle classic bike ride	Traffic planning and management: Encouragement of shift of transport modes	Implementation	Start date: 2008 Expected end date: 2030 Spatial scale: Whole town or city Source affected: Transport Indicator: 500 participants per ride Target emissions reduction: <0.1%



Measure code	Description	Focus	Classification	Status	Other information
Leicester City Council_50	Led Rider Programme	Organised bike rides	Traffic planning and management: Encouragement of shift of transport modes	Implementation	Start date: 2008 Expected end date: 2030 Spatial scale: Whole town or city Source affected: Transport Indicator: 35 public rides Target emissions reduction: <0.1%
Leicester City Council_51	Enforcing speed limits	Leicester and Leicestershire Road Safety Partnership	Traffic planning and management: Other measure	Implementation	Start date: 2001 Expected end date: 2030 Spatial scale: Whole agglomeration Source affected: Transport Indicator: No of schemes introduced Target emissions reduction: <0.1%
Leicester City Council_52	Junction improvements	Pork Pie scheme	Traffic planning and management: Other measure	Implementation	Start date: 2007 Expected end date: 2008 Spatial scale: Local Source affected: Transport Indicator: Scheme implemented Target emissions reduction: <0.1%
Leicester City Council_53	Junction improvements	The Ravensbridge Drive junction improvement	Traffic planning and management: Other measure	Implementation	Start date: 2007 Expected end date: 2008 Spatial scale: Local Source affected: Transport Indicator: Scheme implemented Target emissions reduction: <0.1%

Measure code	Description	Focus	Classification	Status	Other information
Leicester City Council_54	Junction improvements	Melton Road/Troon way junction improvement	Traffic planning and management: Other measure	Evaluation	Start date: 2007 Expected end date: 2008 Spatial scale: Local Source affected: Transport Indicator: Scheme implemented Target emissions reduction: <0.1%
Leicester City Council_55	Junction improvements	St Nicholas Place junction improvement	Traffic planning and management: Other measure	Implementation	Start date: 2007 Expected end date: 2008 Spatial scale: Local Source affected: Transport Indicator: Scheme implemented Target emissions reduction: <0.1%
Leicester City Council_56	Junction improvements	Ayelstone Road/A426 improvements	Traffic planning and management: Other measure	Implementation	Start date: 2014 Expected end date: 2015 Spatial scale: Local Source affected: Transport Indicator: Scheme implemented Target emissions reduction: <0.1%
Leicester City Council_57	Junction improvements	A47 Humberstone Road - 4 major junctions improvements	Traffic planning and management: Other measure	Implementation	Start date: 2007 Expected end date: 2008 Spatial scale: Local Source affected: Transport Indicator: Scheme implemented Target emissions reduction: <0.1%

Measure code	Description	Focus	Classification	Status	Other information
Leicester City Council_58	Junction improvements	Safron lane /Sturdee Road improvements	Traffic planning and management: Other measure	Implementation	Start date: 2007 Expected end date: 2008 Spatial scale: Local Source affected: Transport Indicator: Scheme implemented Target emissions reduction: <0.1%

Measure code	Description	Focus	Classification	Status	Other information
Leicester City Council_59	Management of congestion from works /events	<p>There are 3 groups that manage this measure (which also forms part of the TMA Action Plan). Events Advisory Group - meets monthly with organisers &amp; stakeholders e.g. the emergency services to plan events in detail to minimise disruption. Managed with the support Transport Systems which advise on traffic management &amp; the Area Traffic Control room is used for large events e.g. Diwali, Caribbean Carnival etc. NRSWA Co-ordination Group - meets quarterly &amp; discusses programme of works which include Council, Utility, Developers &amp; County Council works which may have an effect on the City. Work programmes are agreed to avoid clashes &amp; reduce disruption. Monthly Traffic Management Meetings - includes the bus companies, emergency services &amp; other agencies discuss traffic management in detail of projects that affect the highway network. The Council employs a Utilities NRSWA Co-ordinator who manages the Street Work Register [a statutory requirement]. This enables all proposed works to be effectively co-ordinated in the short &amp; medium term.</p>	Traffic planning and management: Other measure	Implementation	<p>Start date: 2007  Expected end date: 2030  Spatial scale: Local  Source affected: Transport  Indicator: No of roadworks and events  Target emissions reduction: &lt;0.1%</p>

Measure code	Description	Focus	Classification	Status	Other information
Leicester City Council_60	Reallocation of road space	A426 Aylestone road - bus priority lane	Traffic planning and management: Improvement of public transport	Implementation	Start date: 2011 Expected end date: 2014 Spatial scale: Local Source affected: Transport Indicator: No of schemes completed Target emissions reduction: <0.1%
Leicester City Council_61	Reallocation of road space	The Pedestrian Preference Zone order has been completed and is in operation. Gallowtree Gate, Market Street and Hotel Street have been completed. The next and final stages of the project include: Belvoir Street, Clock Tower / East Gates, High Street, Granby Street, Market Place. This will be completed by September 2008. This work is being carried out to support the huge investment in regeneration and construction, and in conjunction with the development of Highcross Leicester (the extended Shires Shopping Centre); creating a large traffic free area, which will be safe and pollution free - making visiting the city centre a pleasure and complementing the new shopping centre.	Traffic planning and management: Encouragement of shift of transport modes	Implementation	Start date: 2014 Expected end date: 2018 Spatial scale: Local Source affected: Transport Indicator: No of schemes completed Target emissions reduction: <0.1%

Measure code	Description	Focus	Classification	Status	Other information
Leicester City Council_62	Reallocation of road space	<p>Quality Bus Corridors: Saffron Lane - Phase 1; Pork Pie Island scheme completed in 2007/08. Abbey Lane - Ravensbridge Drive junction improvements complete in 2007/08. Melton Road - Melton Road/Troon Way junction improvement scheme complete. Improvements to the A47 Humberston Road QBC Phase 1 complete. City Centre bus, pedestrian and cycle improvements - From early 2006, Leicester City Council has been working on its 'Streets + Spaces' and Connecting Leicester programmes to develop the streets and spaces in the city centre. Streets + Spaces include creating a new bus corridor to the north of the city centre; pedestrianising High Street, Clock Tower, Market Place approach the Lanes area and Market Street. Many streets will also be rebuilt to a new high quality standard, using granite paving, new street furniture and designs which will create clean, uncluttered streets and spaces.</p>	Traffic planning and management: Improvement of public transport	Implementation	<p>Start date: 2007 Expected end date: 2030 Spatial scale: Local Source affected: Transport Indicator: No of schemes completed Target emissions reduction: &lt;0.1%</p>

Measure code	Description	Focus	Classification	Status	Other information
Leicester City Council_63	Replace further 11,000 sodium street lights with LEDs	Road infrastructure	Traffic planning and management: Other measure	Implementation	Start date: 2014 Expected end date: 2015 Spatial scale: Whole town or city Source affected: Transport Indicator: No of lamps replaced Target emissions reduction: <0.01%
Leicester City Council_64	Replace traffic signals at 129 sites with more efficient LEDs	Road infrastructure	Traffic planning and management: Other measure	Implementation	Start date: 2014 Expected end date: 2015 Spatial scale: Whole town or city Source affected: Transport Indicator: No of lights replaced Target emissions reduction: <0.01%
Leicester City Council_65	Traffic calming/diverting rat runs	Traffic calming schemes are implemented in 20 mph zones to ensure the enforcement	Traffic planning and management: Reduction of speed limits and control	Implementation	Start date: 2001 Expected end date: 2023 Spatial scale: Local Source affected: Transport Indicator: Scheme implemented Target emissions reduction: <0.1%
Leicester City Council_66	Deliver programme of 20 MPH zones	80 zones to be implemented in areas around schools and residential areas	Traffic planning and management: Reduction of speed limits and control	Implementation	Start date: 2001 Expected end date: 2023 Spatial scale: Local Source affected: Transport Indicator: No of schemes implemented Target emissions reduction: <0.1%

Measure code	Description	Focus	Classification	Status	Other information
Leicester City Council_67	Discounted parking charges for LEV's	Reduced charges for LEV	Traffic planning and management: Differentiation of parking fees	Implementation	Start date: 2015 Expected end date: 2030 Spatial scale: Local Source affected: Transport Indicator: Scheme in place Target emissions reduction: <0.1%
Leicester City Council_68	Preparation of new Leicester Local Plan	Leicester Local Plan	Other measure: Other measure	Preparation	Start date: 2015 Expected end date: 2016 Spatial scale: Whole town or city Source affected: Transport Indicator: Plan in place Target emissions reduction: <0.1%
Lincoln City Council_1	Road Network and Traffic Management Improvements	Lincoln Eastern Bypass	Traffic planning and management: Encouragement of shift of transport modes	Planning	Start date: 2016 Expected end date: 2018 Spatial scale: Whole town or city Source affected: Transport Indicator: Change in AADT, including split for HDV/LDV on Broadgate Target emissions reduction: To be agreed
Lincoln City Council_2	Road Network and Traffic Management Improvements	East-West Link	Traffic planning and management: Encouragement of shift of transport modes	Implementation	Start date: 2014 Expected end date: 2016 Spatial scale: Local Source affected: Transport Indicator: To be agreed Target emissions reduction: Not known



Measure code	Description	Focus	Classification	Status	Other information
Lincoln City Council_3	Road Network and Traffic Management Improvements	Southern Bypass	Traffic planning and management: Encouragement of shift of transport modes	Other	Start date: 2014 Expected end date: 2030 Spatial scale: Whole town or city Source affected: Transport Indicator: To be agreed Target emissions reduction: Not known
Lincoln City Council_4	Road Network and Traffic Management Improvements	Traffic flow Management	Traffic planning and management: Other measure	Implementation	Start date: 2007 Expected end date: 2015 Spatial scale: Local Source affected: Transport Indicator: Change in vehicle queuing times Target emissions reduction: Not known
Lincoln City Council_5	Road Network and Traffic Management Improvements	Cycling Infrastructure	Traffic planning and management: Expansion of bicycle and pedestrian infrastructure	Implementation	Start date: 2014 Expected end date: 2030 Spatial scale: Whole town or city Source affected: Transport Indicator: Length of new cycleway Target emissions reduction: Not known
Lincoln City Council_6	Sustainable Transport Initiatives	Quality Bus Corridors	Traffic planning and management: Encouragement of shift of transport modes	Implementation	Start date: 2011 Expected end date: 2030 Spatial scale: Whole town or city Source affected: Transport Indicator: % of buses on time Target emissions reduction: Not known

Measure code	Description	Focus	Classification	Status	Other information
Lincoln City Council_7	Sustainable Transport Initiatives	Real-time Bus Passenger Information	Traffic planning and management: Improvement of public transport	Implementation	Start date: 2008 Expected end date: 2030 Spatial scale: Whole town or city Source affected: Transport Indicator: % of stops or routes with real-time info Target emissions reduction: Not known
Lincoln City Council_8	Sustainable Transport Initiatives	Bus Priority Measures at Traffic Signals	Traffic planning and management: Encouragement of shift of transport modes	Implementation	Start date: 2013 Expected end date: 2030 Spatial scale: Whole town or city Source affected: Transport Indicator: No. of signals with bus priority Target emissions reduction: Not known
Lincoln City Council_9	Sustainable Transport Initiatives	New Public Transport Interchange	Traffic planning and management: Improvement of public transport	Planning	Start date: 2015 Expected end date: 2017 Spatial scale: Whole town or city Source affected: Transport Indicator: To be agreed Target emissions reduction: To be agreed
Lincoln City Council_10	Sustainable Transport Initiatives	Park and Ride	Traffic planning and management: Improvement of public transport	Preparation	Start date: 2014 Expected end date: 2030 Spatial scale: Whole town or city Source affected: Transport Indicator: Passengers carried Target emissions reduction: To be agreed

Measure code	Description	Focus	Classification	Status	Other information
Lincoln City Council_11	Sustainable Transport Initiatives	Alternative Fuel Buses	Public procurement: New vehicles, including low emission vehicles	Evaluation	Start date: 2012 Expected end date: 2014 Spatial scale: Whole town or city Source affected: Transport Indicator: No. of alternative fuel buses Target emissions reduction: To be agreed
Lincoln City Council_12	Sustainable Transport Initiatives	Linc Share - Car Share website	Other measure: Other measure	Evaluation	Start date: 2009 Expected end date: 2030 Spatial scale: Whole town or city Source affected: Transport Indicator: No. of people signed up to site Target emissions reduction: ?
Lincoln City Council_13	Sustainable Transport Initiatives	Access LN6 - Car Share website	Other measure: Other measure	Evaluation	Start date: 2013 Expected end date: 2030 Spatial scale: Local Source affected: Transport Indicator: No. of people signed up to site Target emissions reduction: Not known
Lincoln City Council_14	Sustainable Transport Initiatives	Access LN6 - Lincoln HireBike	Traffic planning and management: Expansion of bicycle and pedestrian infrastructure	Implementation	Start date: 2013 Expected end date: 2020 Spatial scale: Whole town or city Source affected: Transport Indicator: No. of rentals and No. of registrants Target emissions reduction: Not known

Measure code	Description	Focus	Classification	Status	Other information
Lincoln City Council_15	Sustainable Transport Initiatives	Access LN6 - Personalised Travel Planning	Traffic planning and management: Encouragement of shift of transport modes	Implementation	Start date: 2014 Expected end date: 2014 Spatial scale: Local Source affected: Transport Indicator: No. of single occupancy car journeys before/after PTP Target emissions reduction: Not known
Lincoln City Council_16	Sustainable Transport Initiatives	Business Travel Plans	Traffic planning and management: Encouragement of shift of transport modes	Implementation	Start date: 2014 Expected end date: 2030 Spatial scale: Whole town or city Source affected: Transport Indicator: No of businesses with adopted travel plans Target emissions reduction: Not known
Lincoln City Council_17	Sustainable Transport Initiatives	School Travel Plans	Traffic planning and management: Encouragement of shift of transport modes	Evaluation	Start date: 2005 Expected end date: 2012 Spatial scale: Whole town or city Source affected: Transport Indicator: No. of schools with approved travel plans Target emissions reduction: Not known
Lincoln City Council_18	Sustainable Transport Initiatives	Access LN6 - New bus services	Traffic planning and management: Improvement of public transport	Implementation	Start date: 2012 Expected end date: 2015 Spatial scale: Local Source affected: Transport Indicator: Passengers carried Target emissions reduction: Not known

Measure code	Description	Focus	Classification	Status	Other information
Lincoln City Council_19	Sustainable Transport Initiatives	Access LN6 - Hykeham Station improvements	Traffic planning and management: Improvement of public transport	Implementation	Start date: 2014 Expected end date: 2030 Spatial scale: Local Source affected: Transport Indicator: Passengers carried and frequency of trains Target emissions reduction: Not known
Lincoln City Council_20	Sustainable Transport Initiatives	Access LN6 - Sustainable Travel Grant for businesses	Traffic planning and management: Encouragement of shift of transport modes	Implementation	Start date: 2013 Expected end date: 2015 Spatial scale: Whole town or city Source affected: Transport Indicator: Amount of funding provided Target emissions reduction: Not known
Lincoln City Council_21	Sustainable Transport Initiatives	Access LN6 - Cycle storage implementation	Traffic planning and management: Expansion of bicycle and pedestrian infrastructure	Implementation	Start date: 2013 Expected end date: 2015 Spatial scale: Whole town or city Source affected: Transport Indicator: No. of cycle parking spaces provided Target emissions reduction: Not known
Lincoln City Council_22	Sustainable Transport Initiatives	Promotion of sustainable transport to work for City of Lincoln Staff	Traffic planning and management: Encouragement of shift of transport modes	Implementation	Start date: 2010 Expected end date: 2030 Spatial scale: Whole town or city Source affected: Transport Indicator: Change in travel to work behaviour Target emissions reduction: Not known

Measure code	Description	Focus	Classification	Status	Other information
Lincoln City Council_23	Sustainable Transport Initiatives	Introduction of electric vehicles into City of Lincoln Council Fleet	Public procurement: New vehicles, including low emission vehicles	Implementation	Start date: 2013 Expected end date: 2030 Spatial scale: Whole town or city Source affected: Transport Indicator: No of electric vehicles in fleet Target emissions reduction: Not known
Lincoln City Council_24	Sustainable Transport Initiatives	Smarter trip planning for CoLC fleet	Other measure: Other measure	Implementation	Start date: 2010 Expected end date: 2030 Spatial scale: Whole town or city Source affected: Transport Indicator: % reduction in CO2e emissions from CoLC fleet Target emissions reduction: Not known
Lincoln City Council_25	Sustainable Transport Initiatives	Provision of electric vehicle recharge points in CoLC car parks	Public procurement: Other measure	Evaluation	Start date: 2012 Expected end date: 2013 Spatial scale: Whole town or city Source affected: Transport Indicator: No. of recharge points available in CoLC car parks. Target emissions reduction: Not known
Lincoln City Council_26	Sustainable Transport Initiatives	Provision of electric vehicle recharge point for CoLC fleet use	Public procurement: Other measure	Evaluation	Start date: 2012 Expected end date: 2013 Spatial scale: Local Source affected: Transport Indicator: No. of recharge points available for CoLC fleet Target emissions reduction: Not known

Measure code	Description	Focus	Classification	Status	Other information
Lincoln City Council_27	Sustainable Transport Initiatives	Promotion of greener driving styles	Other measure: Other measure	Implementation	Start date: 2010 Expected end date: 2030 Spatial scale: Whole town or city Source affected: Transport Indicator: None Target emissions reduction: Not known
Lincoln City Council_28	Sustainable Transport Initiatives	Promotion of car sharing to public	Traffic planning and management: Encouragement of shift of transport modes	Implementation	Start date: 2009 Expected end date: 2030 Spatial scale: Whole town or city Source affected: Transport Indicator: None Target emissions reduction: Not known
Lincoln City Council_29	Minimising the burden of new development	Develop Air Quality and Development Guide	Other measure: Other measure	Planning	Start date: 2015 Expected end date: 2030 Spatial scale: Whole town or city Source affected: Transport Indicator: To be agreed Target emissions reduction: To be agreed
Lincoln City Council_30	Minimising the burden of new development	Requirement for proportionate air quality mitigation for all new relevant development	Other measure: Other measure	Implementation	Start date: 2014 Expected end date: 2030 Spatial scale: Whole town or city Source affected: Transport Indicator: To be agreed Target emissions reduction: To be agreed

Measure code	Description	Focus	Classification	Status	Other information
Lincoln City Council_31	Air Quality Awareness Raising	Provision of publicly accessible air quality information	Public information and Education: Internet	Implementation	Start date: 2007 Expected end date: 2030 Spatial scale: Whole town or city Source affected: Transport Indicator: None Target emissions reduction: Not known
Lincoln City Council_32	Reducing emissions from CoLC buildings	Energy efficiency measures to reduce natural gas consumption	Other measure: Other measure	Implementation	Start date: 2009 Expected end date: 2030 Spatial scale: Whole town or city Source affected: Commercial and residential sources Indicator: Gas consumption Target emissions reduction: Not known
Mansfield District Council_1	Ensure air quality considerations are addressed in new local plan	Improve air quality	Other measure: Other measure	Planning	Start date: 2014 Expected end date: 2030 Spatial scale: Local Source affected: Commercial and residential sources Indicator: Incorporation of air quality issues into new Local Plan Target emissions reduction: N/A



Measure code	Description	Focus	Classification	Status	Other information
Mansfield District Council_2	Progress with development of integrated pedestrian, cycle, bus, rail and taxi routes	Promote sustainable travel	Other measure: Other measure	Planning	Start date: 2014 Expected end date: 2030 Spatial scale: Local Source affected: Commercial and residential sources Indicator: Policies in new Local Plan to promote sustainable transport modes and seek to discourage non-essential car use Target emissions reduction: N/A
Mansfield District Council_3	Progress with development of integrated pedestrian, cycle, bus, rail and taxi routes	Promote sustainable travel	Traffic planning and management: Encouragement of shift of transport modes	Implementation	Start date: 2011 Expected end date: 2026 Spatial scale: Local Source affected: Transport Indicator: Number/amount of new pedestrian, cycle, bus, rail and taxi facilities developed Target emissions reduction: N/A
Mansfield District Council_4	Seek to increase cycle usage	Promote sustainable travel	Traffic planning and management: Encouragement of shift of transport modes	Planning	Start date: 2014 Expected end date: 2030 Spatial scale: Local Source affected: Transport Indicator: Policies in new Local Plan to protect and enhance cycle network within district Target emissions reduction: N/A

Measure code	Description	Focus	Classification	Status	Other information
Mansfield District Council_5	Seek to increase walking	Promote sustainable travel, encourage healthier lifestyles, protect the environment	Traffic planning and management: Encouragement of shift of transport modes	Planning	Start date: 2014 Expected end date: 2030 Spatial scale: Local Source affected: Transport Indicator: Policies in new Local Plan to protect and enhance walking within district Target emissions reduction: N/A
Mansfield District Council_6	Work with organisations, business, public sector and third sector to encourage uptake of sustainable energy policy	Uptake of sustainable energy	Other measure: Other measure	Planning	Start date: 2014 Expected end date: 2030 Spatial scale: Local Source affected: Commercial and residential sources Indicator: Policies in new Local Plan to promote sustainable energy measures within new development Target emissions reduction: N/A
Mansfield District Council_7	Manage CO2 and particulate emissions from district heating schemes	Review Council-run district heating schemes with regard to energy conservation relative to 'Affordable Warmth'	Low emission fuels for stationary and mobile sources: Shift to installations using low emission fuels	Implementation	Start date: 2011 Expected end date: 2025 Spatial scale: Local Source affected: Commercial and residential sources Indicator: N/A Target emissions reduction: N/A
Mansfield District Council_8	Implementation of the Green Deal and ECO funding through energy companies to improve energy efficiency of housing in District	Review investment need for public and private sector housing stock to meet so far as it relates to energy efficiency	Low emission fuels for stationary and mobile sources: Shift to installations using low emission fuels	Planning	Start date: 2014 Expected end date: 2016 Spatial scale: Local Source affected: Commercial and residential sources Indicator: N/A Target emissions reduction: N/A

Measure code	Description	Focus	Classification	Status	Other information
Mansfield District Council_9	Promote education and training on energy efficiency and affordable warmth issues	Ongoing	Public information and Education: Other mechanisms	Evaluation	Start date: 2013 Expected end date: 2014 Spatial scale: Local Source affected: Commercial and residential sources Indicator: N/A Target emissions reduction: N/A
Mansfield District Council_10	Renewable energy	Promote uptake of renewable technologies in both corporate stock and residential properties	Low emission fuels for stationary and mobile sources: Shift to installations using low emission fuels	Evaluation	Start date: 2012 Expected end date: 2015 Spatial scale: Local Source affected: Commercial and residential sources Indicator: N/A Target emissions reduction: N/A
Mansfield District Council_11	Manage CO2 emissions across District from corporate, residential and commercial properties	Carbon Management Programme and Carbon Emissions Reduction Strategies	Public procurement: Low emission fuels for stationary and mobile sources	Evaluation	Start date: 2012 Expected end date: 2020 Spatial scale: Local Source affected: Commercial and residential sources Indicator: DECC greenhouse gas emissions (annual reporting) Target emissions reduction: N/A
Mansfield District Council_12	Maintain use of cleaner fuels in MDC fleet and encourage eco-driving	Maintain use of biodiesel in all vehicles and any new vehicles bought to latest EU spec (Euro 5 standard)	Public procurement: Other measure	Implementation	Start date: 2010 Expected end date: 2025 Spatial scale: Local Source affected: Transport Indicator: N/A Target emissions reduction: N/A

Measure code	Description	Focus	Classification	Status	Other information
Mansfield District Council_13	Review Council employee assisted car usage schemes to encourage use of less-polluting vehicles to supplement tax incentives	Report to be provided by end of 2011 in respect of assisted car loan scheme. Cycle loan scheme to be promoted during 2011/12	Public procurement: New vehicles, including low emission vehicles	Implementation	Start date: 2012 Expected end date: 2025 Spatial scale: Local Source affected: Transport Indicator: N/A Target emissions reduction: N/A
Mansfield District Council_14	Progress with development of integrated pedestrian, cycle, bus, rail and taxi routes	Development of new bus station/ transport interchange in conjunction with NCC	Traffic planning and management: Encouragement of shift of transport modes	Implementation	Start date: 2010 Expected end date: 2025 Spatial scale: Local Source affected: Transport Indicator: Completion on time and in budget Target emissions reduction: N/A
Mansfield District Council_15	Monitor number of schools involved with ENCAMS Eco schools project	Report on Eco schools ENCAMS project	Public information and Education: Other mechanisms	Implementation	Start date: 2010 Expected end date: 2025 Spatial scale: Local Source affected: Other, please specify Indicator: N/A Target emissions reduction: N/A
Mansfield District Council_16	Forge strong working partnership with Mansfield PCT and Health Partnership Board of MASP	Attending meetings and liaising	Public information and Education: Other mechanisms	Other	Start date: 2005 Expected end date: 2025 Spatial scale: Local Source affected: Other, please specify Indicator: Continue to attend Partnership Meetings during year (at least 6) Target emissions reduction: N/A
Mansfield District Council_17	Engage with public health professionals of PCT to ensure local health improvement programme commits to improve local air quality	Ensure Air Quality objectives are supported by inclusion of HIMP Programme for area	Public information and Education: Other mechanisms	Other	Start date: 2005 Expected end date: 2025 Spatial scale: Local Source affected: Other, please specify Indicator: N/A Target emissions reduction: N/A

Measure code	Description	Focus	Classification	Status	Other information
Mansfield District Council_18	Create consultative mechanism with PCT to offer public advice concerning any air pollution episodes	Continue to meet with PCT to draw up plan with details of actions required and report to Air Quality Steering Group	Public information and Education: Other mechanisms	Other	Start date: 2005 Expected end date: 2025 Spatial scale: Local Source affected: Other, please specify Indicator: N/A Target emissions reduction: N/A
Mansfield District Council_19	Provide information to public	Promote smoky diesel hotline. Provide air quality information hotline	Public information and Education: Other mechanisms	Implementation	Start date: 2005 Expected end date: 2025 Spatial scale: Local Source affected: Other, please specify Indicator: Evidence of publicity through leaflets, press, radio, etc. Target emissions reduction: N/A
Mansfield District Council_21	Sustain support for Nottinghamshire's 'Framework for Action' Air Quality Strategy, and continue close working relationship with other public sector regulators	To ensure improvements in local air quality	Other measure: Other measure	Implementation	Start date: 2008 Expected end date: 2025 Spatial scale: Local Source affected: Commercial and residential sources Indicator: Continue in membership of Nottinghamshire Pollution Working Group to ensure support for strategy Target emissions reduction: N/A
Mansfield District Council_22	Provide annual air quality reports for public information via MDC website and County Library Service	Make air quality information available	Public information and Education: Other mechanisms	Implementation	Start date: 2005 Expected end date: 2025 Spatial scale: Local Source affected: Transport Indicator: Produce air quality annual reports and make available to interested parties Target emissions reduction: N/A

Measure code	Description	Focus	Classification	Status	Other information
Mansfield District Council_23	Manage emissions of Hackney Carriage and Private Hire Vehicles	Reduce vehicle emissions by encouraging use of vehicles with cleaner emissions	Permit systems and economic instruments: Introduction/increase of environment taxes	Implementation	Start date: 2012 Expected end date: 2020 Spatial scale: Local Source affected: Transport Indicator: More vehicles being used which have less emissions Target emissions reduction: N/A
North East Derbyshire District Council_1	Liaison with Highways Agency regarding M1 motorway	Liaison with Highways Agency regarding M1 motorway	Traffic planning and management: Other measure	Implementation	Start date: 2014 Expected end date: 2014 Spatial scale: Local Source affected: Transport Indicator: N/A Target emissions reduction: N/A
Northampton Borough Council_1	Low Emission Strategy	NO2	Other measure: Other measure	Preparation	Start date: 2013 Expected end date: 2020 Spatial scale: Whole town or city Source affected: Commercial and residential sources Indicator: ? Target emissions reduction: ?
Northampton Borough Council_2	Promotion of cycling	NO2	Traffic planning and management: Encouragement of shift of transport modes	Implementation	Start date: 2013 Expected end date: 2020 Spatial scale: Whole town or city Source affected: Commercial and residential sources Indicator: ? Target emissions reduction: ?

Measure code	Description	Focus	Classification	Status	Other information
Northampton Borough Council_3	Cycle Hire Scheme	NO2	Public procurement: Other measure	Implementation	Start date: 2013 Expected end date: 2020 Spatial scale: Local Source affected: Transport Indicator: ? Target emissions reduction: ?
Northampton Borough Council_4	Cycle Network	NO2	Traffic planning and management: Encouragement of shift of transport modes	Implementation	Start date: 2008 Expected end date: 2020 Spatial scale: Whole town or city Source affected: Transport Indicator: ? Target emissions reduction: ?
Northampton Borough Council_5	Air Quality Planning and Guidance	NO2	Other measure: Other measure	Preparation	Start date: 2013 Expected end date: 2020 Spatial scale: Whole town or city Source affected: Commercial and residential sources Indicator: ? Target emissions reduction: ?
Northampton Borough Council_6	Sustainable Procurement Guidance	NO2	Other measure: Other measure	Preparation	Start date: 2013 Expected end date: 2020 Spatial scale: Local Source affected: Other, please specify Indicator: ? Target emissions reduction: ?
Northampton Borough Council_7	Procuring alternative refuelling infrastructure	NO2	Public procurement: Other measure	Planning	Start date: 2014 Expected end date: 2020 Spatial scale: Whole town or city Source affected: Transport Indicator: ? Target emissions reduction: ?

Measure code	Description	Focus	Classification	Status	Other information
Northampton Borough Council_8	Personalised Travel Planning	NO2	Other measure: Other measure	Other	Start date: 2010 Expected end date: 2013 Spatial scale: Local Source affected: Other, please specify Indicator: ? Target emissions reduction: ?
Nottingham City Council_1	Turning Point Major Integrated Transport Scheme	Redistribution of cross-city traffic movements with restricted access to Milton Street/Lower Parliament Street Area to achieve high level pedestrian and bus priority	Traffic planning and management: Encouragement of shift of transport modes	Implementation	Start date: 2004 Expected end date: 2006 Spatial scale: Local Source affected: Transport Indicator: Congestion Target emissions reduction: N/A
Nottingham City Council_2	Parksmart	Variable message signing and zonal car park direction signing system to direct traffic to available car park parking availability	Traffic planning and management: Other measure	Implementation	Start date: 2008 Expected end date: 2010 Spatial scale: Local Source affected: Transport Indicator: Congestion Target emissions reduction: < 1ug/m3
Nottingham City Council_3	Statutory Bus Quality Partner-ship Scheme	UK's first City Centre wide statutory quality partnership scheme	Traffic planning and management: Improvement of public transport	Implementation	Start date: 2009 Expected end date: 2010 Spatial scale: Whole town or city Source affected: Transport Indicator: Bus use Target emissions reduction: < 1ug/m3
Nottingham City Council_4	Connecting Eastside - Phase 1	Changes within the Huntingdon Street area and traffic priority around Sneinton Market. Creation of new public square.	Traffic planning and management: Other measure	Implementation	Start date: 2009 Expected end date: 2012 Spatial scale: Local Source affected: Transport Indicator: Congestion Target emissions reduction: N/A



Measure code	Description	Focus	Classification	Status	Other information
Nottingham City Council_5	Connecting Eastside - Phase 2	Huntingdon St/Lower Parliament St (between Mansfield Road and Southwell Road) to become strategic two-way traffic route with associated public realm improvement package Cranbrook St/Bellar Gate bus priority route and local access	Traffic planning and management: Encouragement of shift of transport modes	Planning	Start date: 2016 Expected end date: 2030 Spatial scale: Local Source affected: Transport Indicator: Congestion Target emissions reduction: N/A
Nottingham City Council_6	Primary Pedestrian Routes	Increased priority for pedestrians across inner ring road junctions and upgraded routes from City Centre through regeneration areas.	Traffic planning and management: Encouragement of shift of transport modes	Implementation	Start date: 2006 Expected end date: 2011 Spatial scale: Local Source affected: Transport Indicator: Pedestrian footfall Target emissions reduction: N/A
Nottingham City Council_7	Commuter cycle routes	On road cycle route improvements includes road space reallocation, cycle lanes and advanced stop lines at junctions	Traffic planning and management: Encouragement of shift of transport modes	Implementation	Start date: 2007 Expected end date: 2011 Spatial scale: Local Source affected: Transport Indicator: Cycling trips Target emissions reduction: < 1ug/m3
Nottingham City Council_8	Big Track	Off road circular cycle route via City Centre. Includes Embankment Link and upgrading of footbridge to accommodate cyclists.	Traffic planning and management: Encouragement of shift of transport modes	Implementation	Start date: 2006 Expected end date: 2009 Spatial scale: Local Source affected: Transport Indicator: Cycling trips Target emissions reduction: < 1ug/m3

Measure code	Description	Focus	Classification	Status	Other information
Nottingham City Council_9	Travel Plans	Travel plans and business support package for employers.	Traffic planning and management: Encouragement of shift of transport modes	Implementation	Start date: 2006 Expected end date: 2011 Spatial scale: Local Source affected: Transport Indicator: Travel plans Target emissions reduction: < 1ug/m3
Nottingham City Council_10	Station Hub	Rail capacity improvements and development of modern transport interchange	Traffic planning and management: Encouragement of shift of transport modes	Implementation	Start date: 2006 Expected end date: 2015 Spatial scale: Local Source affected: Transport Indicator: Congestion Target emissions reduction: < 1ug/m3
Nottingham City Council_11	NET Phase 2	Tram network extensions to Clifton and Chilwell via Beeston	Traffic planning and management: Improvement of public transport	Implementation	Start date: 2006 Expected end date: 2015 Spatial scale: Whole town or city Source affected: Transport Indicator: Tram use Target emissions reduction: 1-2 ug/m3
Nottingham City Council_12	NET Future Phases	Other tram network extensions linked to sustainable urban extensions	Traffic planning and management: Improvement of public transport	Planning	Start date: 2019 Expected end date: 2030 Spatial scale: Whole town or city Source affected: Transport Indicator: Tram use Target emissions reduction: 2 ug/m3
Nottingham City Council_13	Workplace Parking Levy	Employers charged for commuter car parking provision (>10 spaces). Revenue generated to fund significant public transport improvements	Traffic planning and management: Management of parking places	Implementation	Start date: 2006 Expected end date: 2012 Spatial scale: Local Source affected: Transport Indicator: Congestion Target emissions reduction: < 1ug/m3

Measure code	Description	Focus	Classification	Status	Other information
Nottingham City Council_14	Park and Ride	Expansion of Park and Ride capacity	Traffic planning and management: Improvement of public transport	Implementation	Start date: 2006 Expected end date: 2015 Spatial scale: Local Source affected: Transport Indicator: Public transport use Target emissions reduction: < 1ug/m3
Nottingham City Council_15	A52 Ring Road upgrading	Upgrading of Ring Road Radcliffe to Clifton Bridge as recommended in the A52 MMS	Traffic planning and management: Other measure	Implementation	Start date: 2015 Expected end date: 2030 Spatial scale: Whole agglomeration Source affected: Transport Indicator: Congestion Target emissions reduction: N/A
Nottingham City Council_16	New River Crossing	New Trent River crossing at Radcliffe. Development of alternative traffic routes to the east of the conurbation.	Traffic planning and management: Other measure	Planning	Start date: 2015 Expected end date: 2030 Spatial scale: Whole agglomeration Source affected: Transport Indicator: Congestion Target emissions reduction: 4-5ug/m3
Nottingham City Council_17	Full signalisation of junction	Derby Road/Ring Road junction	Traffic planning and management: Other measure	Implementation	Start date: 2009 Expected end date: 2011 Spatial scale: Local Source affected: Transport Indicator: Congestion Target emissions reduction: < 1ug/m3
Nottingham City Council_18	NET Phase 2	Network extension to Chilwell via Beeston (including Park and Ride at Bardills) includes stop to serve QMC and interchange with local bus services	Traffic planning and management: Improvement of public transport	Implementation	Start date: 2006 Expected end date: 2015 Spatial scale: Whole town or city Source affected: Transport Indicator: Tram use Target emissions reduction: 1ug/m3

Measure code	Description	Focus	Classification	Status	Other information
Nottingham City Council_19	Ring Road major	Integrated transport scheme to increase junction capacity, improve an orbital bus service, upgrade interchange facilities, improve cycle and footway facilities and provide better parking provision for residents	Traffic planning and management: Improvement of public transport	Implementation	Start date: 2006 Expected end date: 2015 Spatial scale: Whole town or city Source affected: Transport Indicator: Congestion Target emissions reduction: 1ug/m3
Nottingham City Council_20	Ring Road bus service capacity upgrade	New larger vehicles to operate 'Medi-link' Ring Road orbital bus service	Traffic planning and management: Improvement of public transport	Implementation	Start date: 2010 Expected end date: 2015 Spatial scale: Whole town or city Source affected: Transport Indicator: Bus use Target emissions reduction: < 1ug/m3
Nottingham City Council_21	QMC Inter-change	Development of bus interchange and in the future tram within the hospital site	Traffic planning and management: Improvement of public transport	Implementation	Start date: 2010 Expected end date: 2017 Spatial scale: Whole town or city Source affected: Transport Indicator: Public transport use Target emissions reduction: < 1ug/m3
Nottingham City Council_22	Bus Priority	Introduction of bus lanes through road space reallocation and other bus priority measures in A6200/A52 and A6005 corridors	Traffic planning and management: Encouragement of shift of transport modes	Planning	Start date: 2011 Expected end date: 2030 Spatial scale: Local Source affected: Transport Indicator: Public transport use Target emissions reduction: < 1ug/m3

Measure code	Description	Focus	Classification	Status	Other information
Nottingham City Council_23	Cycle Ambition Programme	Cycle network development	Traffic planning and management: Encouragement of shift of transport modes	Implementation	Start date: 2008 Expected end date: 2020 Spatial scale: Local Source affected: Transport Indicator: Cycling trips Target emissions reduction: < 1ug/m3
Nottingham City Council_24	Bus/cycle integration project	Carbon reduction demonstration project involving installation of cycle parking facilities at bus interchange points.	Traffic planning and management: Encouragement of shift of transport modes	Implementation	Start date: 2009 Expected end date: 2010 Spatial scale: Whole town or city Source affected: Transport Indicator: Cycling trips Target emissions reduction: < 1ug/m3
Nottingham City Council_25	UCycle project	Cycling England national demonstration-	Traffic planning and management: Encouragement of shift of transport modes	Implementation	Start date: 2008 Expected end date: 2011 Spatial scale: Whole town or city Source affected: Transport Indicator: Cycling trips Target emissions reduction: N/A
Nottingham City Council_26	Travel Plans	Including updating of hospital and University plans	Traffic planning and management: Encouragement of shift of transport modes	Implementation	Start date: 2006 Expected end date: 2011 Spatial scale: Local Source affected: Transport Indicator: Travel plans Target emissions reduction: 1ug/m3
Nottingham City Council_27	Workplace Parking Levy	Employers charged for commuter car parking provision (>10 spaces). Revenue generated to fund significant public transport improvements	Traffic planning and management: Management of parking places	Implementation	Start date: 2006 Expected end date: 2012 Spatial scale: Local Source affected: Transport Indicator: Congestion Target emissions reduction: 1ug/m3

Measure code	Description	Focus	Classification	Status	Other information
Nottingham City Council_28	UCycle project	Cycling England national demonstration	Traffic planning and management: Encouragement of shift of transport modes	Implementation	Start date: 2008 Expected end date: 2011 Spatial scale: Whole town or city Source affected: Transport Indicator: Cycling trips Target emissions reduction: N/A
Nottingham City Council_29	Travel Plans	Including updating of hospital and University plans	Traffic planning and management: Encouragement of shift of transport modes	Implementation	Start date: 2006 Expected end date: 2011 Spatial scale: Local Source affected: Transport Indicator: Travel plans Target emissions reduction: 1ug/m3
Nottingham City Council_30	Workplace Parking Levy	Employers charged for commuter car parking provision (>10 spaces). Revenue generated to fund significant public transport improvements	Traffic planning and management: Management of parking places	Implementation	Start date: 2006 Expected end date: 2012 Spatial scale: Local Source affected: Transport Indicator: Congestion Target emissions reduction: 1ug/m3
Nottingham City Council_31	Travel Plans	Including updating of hospital and University plans	Traffic planning and management: Encouragement of shift of transport modes	Implementation	Start date: 2006 Expected end date: 2011 Spatial scale: Local Source affected: Transport Indicator: Travel plans Target emissions reduction: 1ug/m3
Nottingham City Council_32	Workplace Parking Levy	Employers charged for commuter car parking provision (>10 spaces). Revenue generated to fund significant public transport improvements	Traffic planning and management: Management of parking places	Implementation	Start date: 2006 Expected end date: 2012 Spatial scale: Local Source affected: Transport Indicator: Congestion Target emissions reduction: 1ug/m3

Measure code	Description	Focus	Classification	Status	Other information
Nottingham City Council_33	Broadmarsh Roadspace Transformation	Changes to traffic priority on Collin Street / Canal Street area and public realm improvements across area surrounding Broadmarsh Shopping Centre	Traffic planning and management: Encouragement of shift of transport modes	Implementation	Start date: 2017 Expected end date: 2020 Spatial scale: Local Source affected: Transport Indicator: Congestion Target emissions reduction: N/A
Nottingham City Council_34	Nottingham Enterprise Zone Transport Package	Creation of new walking and cycling bridge over rail line, linking the University of Nottingham to the Nottingham Enterprise Zone	Traffic planning and management: Encouragement of shift of transport modes	Implementation	Start date: 2015 Expected end date: 2018 Spatial scale: Local Source affected: Transport Indicator: Cycling Trips Target emissions reduction: N/A
Nottingham City Council_35	Southern Growth Corridor (Eco-Expressway)	Improvements bus lanes, cycle facilities and encouraging electric vehicles along a east-west corridor across the city.	Traffic planning and management: Improvement of public transport	Implementation	Start date: 2015 Expected end date: 2018 Spatial scale: Local Source affected: Transport Indicator: Bus use Target emissions reduction: N/A
Nottingham City Council_36	Nottingham and Derby Access Fund	Package of works to promote sustainable travel, including travel planning and cycle events	Traffic planning and management: Improvement of public transport	Implementation	Start date: 2027 Expected end date: 2021 Spatial scale: Whole town or city Source affected: Transport Indicator: Cycling trips Target emissions reduction: N/A
Nottingham City Council_37	OLEV Go Ultra Low Programme	Package of works to promote electric vehicle uptake	Public procurement: Other measure	Implementation	Start date: 2016 Expected end date: 2020 Spatial scale: Whole town or city Source affected: Transport Indicator: Travel plans Target emissions reduction: N/A

Measure code	Description	Focus	Classification	Status	Other information
Nottingham City Council_38	Clear Zone Works	Traffic management measures within the City Centre area	Traffic planning and management: Encouragement of shift of transport modes	Planning	Start date: 2016 Expected end date: 2018 Spatial scale: Local Source affected: Transport Indicator: Congestion Target emissions reduction: N/A
Nottingham City Council_39	Red Routes: Main roads in City Centre	Red Routes designated on key roads within city centre area	Traffic planning and management: Encouragement of shift of transport modes	Planning	Start date: 2017 Expected end date: 2020 Spatial scale: Local Source affected: Transport Indicator: Congestion Target emissions reduction: N/A
Nottingham City Council_40	OLEV Taxi Grant	Additional charging infrastructure	Public procurement: Other measure	Planning	Start date: 2017 Expected end date: 2020 Spatial scale: Local Source affected: Transport Indicator: N/A Target emissions reduction: N/A
Nottingham City Council_41	Low Emission Bus Fleet	53 additional Gas Buses on NCT routes	Public procurement: Other measure	Planning	Start date: N/A Expected end date: N/A Spatial scale: Local Source affected: Transport Indicator: N/A Target emissions reduction: N/A
Rushcliffe Borough Council_1	A453 widening	Capacity improvement	Traffic planning and management: Other measure	Implementation	Start date: 2013 Expected end date: 2015 Spatial scale: Whole agglomeration Source affected: Transport Indicator: N/A Target emissions reduction: N/A



Measure code	Description	Focus	Classification	Status	Other information
Rushcliffe Borough Council_2	A52 ring road upgrade	Capacity improvement	Traffic planning and management: Other measure	Implementation	Start date: 2013 Expected end date: 2016 Spatial scale: Whole agglomeration Source affected: Transport Indicator: N/A Target emissions reduction: N/A
Rushcliffe Borough Council_3	Construction of the East Midlands Parkway station	Reduced congestion/car use	Traffic planning and management: Improvement of public transport	Other	Start date: 2007 Expected end date: 2009 Spatial scale: Whole agglomeration Source affected: Transport Indicator: N/A Target emissions reduction: N/A
Rushcliffe Borough Council_4	NET Phase 2	Reduced congestion/car use	Traffic planning and management: Improvement of public transport	Implementation	Start date: 2013 Expected end date: 2015 Spatial scale: Whole agglomeration Source affected: Transport Indicator: N/A Target emissions reduction: N/A
Rushcliffe Borough Council_5	Encourage operators to take-up cleaner vehicles through partnership working	Cleaner vehicles	Public procurement: Cleaner vehicle transport services	Implementation	Start date: 2014 Expected end date: 2030 Spatial scale: Local Source affected: Transport Indicator: N/A Target emissions reduction: N/A
Rushcliffe Borough Council_6	Park & Ride facilities	Reduced congestion/car use	Traffic planning and management: Improvement of public transport	Other	Start date: 2010 Expected end date: 2010 Spatial scale: Local Source affected: Transport Indicator: N/A Target emissions reduction: N/A

Measure code	Description	Focus	Classification	Status	Other information
Rushcliffe Borough Council_7	Provision of bus infrastructure	Reduced congestion/car use	Traffic planning and management: Improvement of public transport	Implementation	Start date: 2014 Expected end date: 2030 Spatial scale: Local Source affected: Transport Indicator: N/A Target emissions reduction: N/A
Rushcliffe Borough Council_8	Provision of bus priority	Reduced congestion/car use	Traffic planning and management: Encouragement of shift of transport modes	Implementation	Start date: 2007 Expected end date: 2015 Spatial scale: Local Source affected: Transport Indicator: N/A Target emissions reduction: N/A
Rushcliffe Borough Council_9	Marketing of public transport	Reduced congestion/car use	Traffic planning and management: Encouragement of shift of transport modes	Implementation	Start date: 2014 Expected end date: 2030 Spatial scale: Whole agglomeration Source affected: Transport Indicator: N/A Target emissions reduction: N/A
Rushcliffe Borough Council_10	Public transport information	Reduced congestion/car use	Public information and Education: Other mechanisms	Implementation	Start date: 2014 Expected end date: 2030 Spatial scale: Whole agglomeration Source affected: Transport Indicator: N/A Target emissions reduction: N/A
Rushcliffe Borough Council_11	Nottingham City Statutory Quality Partnership (SQPS) for bus operators	Reduced congestion/car use	Traffic planning and management: Other measure	Implementation	Start date: 2010 Expected end date: 2030 Spatial scale: Whole agglomeration Source affected: Transport Indicator: N/A Target emissions reduction: N/A

Measure code	Description	Focus	Classification	Status	Other information
Rushcliffe Borough Council_12	Public transport service improvements	Reduced congestion/car use	Traffic planning and management: Improvement of public transport	Implementation	Start date: 2014 Expected end date: 2030 Spatial scale: Local Source affected: Transport Indicator: N/A Target emissions reduction: N/A
Rushcliffe Borough Council_13	Integrated ticketing	Reduced congestion/car use	Traffic planning and management: Encouragement of shift of transport modes	Implementation	Start date: 2003 Expected end date: 2030 Spatial scale: Whole agglomeration Source affected: Transport Indicator: N/A Target emissions reduction: N/A
Rushcliffe Borough Council_14	Concessionary fare schemes for the over 60s and disabled	Reduced congestion/car use	Traffic planning and management: Encouragement of shift of transport modes	Implementation	Start date: 2014 Expected end date: 2030 Spatial scale: Whole agglomeration Source affected: Transport Indicator: N/A Target emissions reduction: N/A
Rushcliffe Borough Council_15	Concessionary fares for young people	Reduced congestion/car use	Traffic planning and management: Encouragement of shift of transport modes	Implementation	Start date: 2014 Expected end date: 2030 Spatial scale: Whole agglomeration Source affected: Transport Indicator: N/A Target emissions reduction: N/A
Rushcliffe Borough Council_16	Introduction of SCOOT/MOVA	Capacity improvement	Traffic planning and management: Other measure	Other	Start date: 2012 Expected end date: 2013 Spatial scale: Local Source affected: Transport Indicator: N/A Target emissions reduction: N/A

Measure code	Description	Focus	Classification	Status	Other information
Rushcliffe Borough Council_17	Traffic control and information	Network management	Traffic planning and management: Other measure	Implementation	Start date: 2014 Expected end date: 2030 Spatial scale: Whole agglomeration Source affected: Transport Indicator: N/A Target emissions reduction: N/A
Rushcliffe Borough Council_18	Co-ordination of streetworks	Network management	Traffic planning and management: Other measure	Implementation	Start date: 2014 Expected end date: 2030 Spatial scale: Whole agglomeration Source affected: Transport Indicator: N/A Target emissions reduction: N/A
Rushcliffe Borough Council_19	Event and incident management	Network management	Traffic planning and management: Other measure	Implementation	Start date: 2014 Expected end date: 2030 Spatial scale: Whole agglomeration Source affected: Transport Indicator: N/A Target emissions reduction: N/A
Rushcliffe Borough Council_20	Contingency planning	Network management	Traffic planning and management: Other measure	Implementation	Start date: 2014 Expected end date: 2030 Spatial scale: Whole agglomeration Source affected: Transport Indicator: N/A Target emissions reduction: N/A

Measure code	Description	Focus	Classification	Status	Other information
Rushcliffe Borough Council_21	Introduce increasing proportion of bio-fuels to NCC's fleet	Cleaner vehicles	Public procurement: Cleaner vehicle transport services	Implementation	Start date: 2014 Expected end date: 2030 Spatial scale: Whole agglomeration Source affected: Transport Indicator: N/A Target emissions reduction: N/A
Rushcliffe Borough Council_22	RBC fleet and fuel policy	Cleaner vehicles	Other measure: Other measure	Implementation	Start date: 2014 Expected end date: 2030 Spatial scale: Whole agglomeration Source affected: Transport Indicator: N/A Target emissions reduction: N/A
Rushcliffe Borough Council_23	Cycle maps of Greater Nottingham area	Reduced congestion/car use	Traffic planning and management: Encouragement of shift of transport modes	Implementation	Start date: 2014 Expected end date: 2030 Spatial scale: Whole agglomeration Source affected: Transport Indicator: N/A Target emissions reduction: N/A
Rushcliffe Borough Council_24	Cycle training	Reduced congestion/car use	Traffic planning and management: Encouragement of shift of transport modes	Implementation	Start date: 2014 Expected end date: 2030 Spatial scale: Whole agglomeration Source affected: Transport Indicator: N/A Target emissions reduction: N/A
Rushcliffe Borough Council_25	Advance cycle stop lines	Reduced congestion/car use	Traffic planning and management: Encouragement of shift of transport modes	Implementation	Start date: 2014 Expected end date: 2030 Spatial scale: Local Source affected: Transport Indicator: N/A Target emissions reduction: N/A

Measure code	Description	Focus	Classification	Status	Other information
Rushcliffe Borough Council_26	Cycle hub/integration with bus	Reduced congestion/car use	Traffic planning and management: Encouragement of shift of transport modes	Implementation	Start date: 2014 Expected end date: 2015 Spatial scale: Local Source affected: Transport Indicator: N/A Target emissions reduction: N/A
Rushcliffe Borough Council_27	Wilford Lane cycle route	Reduced congestion/car use	Traffic planning and management: Expansion of bicycle and pedestrian infrastructure	Other	Start date: 2007 Expected end date: 2008 Spatial scale: Local Source affected: Transport Indicator: N/A Target emissions reduction: N/A
Rushcliffe Borough Council_28	Civil parking enforcement	Network management	Traffic planning and management: Other measure	Implementation	Start date: 2008 Expected end date: 2030 Spatial scale: Whole agglomeration Source affected: Transport Indicator: N/A Target emissions reduction: N/A
Rushcliffe Borough Council_29	VOSA emissions testing	Cleaner vehicles	Other measure: Other measure	N/A	Start date: 2014 Expected end date: 2030 Spatial scale: Whole agglomeration Source affected: Transport Indicator: N/A Target emissions reduction: N/A
Rushcliffe Borough Council_30	Workplace parking levy	Reduced congestion/car use	Traffic planning and management: Management of parking places	Implementation	Start date: 2012 Expected end date: 2030 Spatial scale: Whole town or city Source affected: Transport Indicator: N/A Target emissions reduction: N/A

Measure code	Description	Focus	Classification	Status	Other information
Rushcliffe Borough Council_31	Car sharing promotion	Reduced congestion/car use	Other measure: Other measure	Implementation	Start date: 2006 Expected end date: 2030 Spatial scale: Whole agglomeration Source affected: Transport Indicator: N/A Target emissions reduction: N/A
Rushcliffe Borough Council_32	Introduction of car club	Reduced congestion/car use	Other measure: Other measure	Implementation	Start date: 2014 Expected end date: 2030 Spatial scale: Whole town or city Source affected: Transport Indicator: N/A Target emissions reduction: N/A
Rushcliffe Borough Council_33	Marketing of walking and cycling	Reduced congestion/car use	Traffic planning and management: Encouragement of shift of transport modes	Implementation	Start date: 2014 Expected end date: 2030 Spatial scale: Whole agglomeration Source affected: Transport Indicator: N/A Target emissions reduction: N/A
Rushcliffe Borough Council_34	NCC travel plan	Reduced congestion/car use	Traffic planning and management: Encouragement of shift of transport modes	Implementation	Start date: 2014 Expected end date: 2030 Spatial scale: Local Source affected: Transport Indicator: N/A Target emissions reduction: N/A
Rushcliffe Borough Council_35	Personalised travel planning	Reduced congestion/car use	Traffic planning and management: Encouragement of shift of transport modes	Implementation	Start date: 2004 Expected end date: 2016 Spatial scale: Local Source affected: Transport Indicator: N/A Target emissions reduction: N/A

Measure code	Description	Focus	Classification	Status	Other information
Rushcliffe Borough Council_36	RBC travel plan	Reduced congestion/car use	Traffic planning and management: Encouragement of shift of transport modes	N/A	Start date: 2014 Expected end date: 2030 Spatial scale: Local Source affected: Transport Indicator: N/A Target emissions reduction: N/A
Rushcliffe Borough Council_37	School travel plans	Reduced congestion/car use	Traffic planning and management: Encouragement of shift of transport modes	Other	Start date: 2011 Expected end date: 2011 Spatial scale: Local Source affected: Transport Indicator: N/A Target emissions reduction: N/A
Rushcliffe Borough Council_38	Workplace travel plans	Reduced congestion/car use	Traffic planning and management: Encouragement of shift of transport modes	Implementation	Start date: 2014 Expected end date: 2030 Spatial scale: Whole agglomeration Source affected: Transport Indicator: N/A Target emissions reduction: N/A
Rushcliffe Borough Council_39	City centre to Trent Bridge primary pedestrian route	Reduced congestion/car use	Traffic planning and management: Other measure	Planning	Start date: 2014 Expected end date: 2030 Spatial scale: Local Source affected: Transport Indicator: N/A Target emissions reduction: N/A
Rushcliffe Borough Council_40	Develop walking map for West Bridgford employees	Reduced congestion/car use	Traffic planning and management: Encouragement of shift of transport modes	Other	Start date: 2007 Expected end date: 2007 Spatial scale: Local Source affected: Transport Indicator: N/A Target emissions reduction: N/A



Measure code	Description	Focus	Classification	Status	Other information
Rushcliffe Borough Council_41	Development control policy	N/A	Other measure: Other measure	Implementation	Start date: 2015 Expected end date: 2030 Spatial scale: Whole agglomeration Source affected: Commercial and residential sources Indicator: N/A Target emissions reduction: N/A
Rushcliffe Borough Council_42	Development control contributions	N/A	Other measure: Other measure	Other	Start date: 2014 Expected end date: 2030 Spatial scale: Whole town or city Source affected: Transport Indicator: N/A Target emissions reduction: N/A
Rushcliffe Borough Council_43	Remote home working	Reduced congestion/car use	Other measure: Other measure	Implementation	Start date: 2007 Expected end date: 2017 Spatial scale: Local Source affected: Transport Indicator: N/A Target emissions reduction: N/A
Rushcliffe Borough Council_44	RBC energy strategy	Energy efficiency	Public procurement: Low emission stationary combustion sources	Implementation	Start date: 2007 Expected end date: 2020 Spatial scale: Whole agglomeration Source affected: Commercial and residential sources Indicator: N/A Target emissions reduction: N/A

Measure code	Description	Focus	Classification	Status	Other information
Rushcliffe Borough Council_45	RBC procurement	Green purchasing	Other measure: Other measure	Implementation	Start date: 2007 Expected end date: 2010 Spatial scale: Local Source affected: Commercial and residential sources Indicator: N/A Target emissions reduction: N/A
Rushcliffe Borough Council_46	RBC EMAS	N/A	Other measure: Other measure	Implementation	Start date: 2007 Expected end date: 2012 Spatial scale: Local Source affected: Commercial and residential sources Indicator: N/A Target emissions reduction: N/A
Rushcliffe Borough Council_47	NCC flexible working practices	Reduced congestion/car use	Other measure: Other measure	Implementation	Start date: 2014 Expected end date: 2030 Spatial scale: Whole agglomeration Source affected: Transport Indicator: N/A Target emissions reduction: N/A
Rushcliffe Borough Council_48	Driver training	Vehicle efficiency	Other measure: Other measure	Other	Start date: 2012 Expected end date: 2012 Spatial scale: Whole agglomeration Source affected: Transport Indicator: N/A Target emissions reduction: N/A

Measure code	Description	Focus	Classification	Status	Other information
Rushcliffe Borough Council_49	Eco-Stars	Vehicle efficiency	Other measure: Other measure	Implementation	Start date: 2013 Expected end date: 2015 Spatial scale: Whole agglomeration Source affected: Transport Indicator: N/A Target emissions reduction: N/A
Rushcliffe Borough Council_50	Big track	Reduced congestion/car use	Traffic planning and management: Encouragement of shift of transport modes	Implementation	Start date: 2006 Expected end date: 2030 Spatial scale: Local Source affected: Transport Indicator: N/A Target emissions reduction: N/A
Rushcliffe Borough Council_51	HA to undertake a feasibility study for other junction improvements as part of Route Strategy on the A52 (completion early 2015 to investigate improvement schemes from Gamston to A46)	Junction improvement	Traffic planning and management: Encouragement of shift of transport modes	Planning	Start date: 2014 Expected end date: 2030 Spatial scale: Local Source affected: Transport Indicator: Written update supplied by HA annually until completed. Any new measures to be incorporated into this existing AQAP Target emissions reduction: Less than 1 ug/m3
Rushcliffe Borough Council_52	Re-phasing of current lights to give greater priority to A52 Nottingham bound	Junction improvement	Traffic planning and management: Encouragement of shift of transport modes	Planning	Start date: 2014 Expected end date: 2030 Spatial scale: Local Source affected: Transport Indicator: N/A Target emissions reduction: Less than 1 ug/m3

Measure code	Description	Focus	Classification	Status	Other information
Rushcliffe Borough Council_53	Install scoot/Mova or review operating performance to maximise junction capacity and prioritise A52	Junction improvement	Traffic planning and management: Encouragement of shift of transport modes	Planning	Start date: 2014 Expected end date: 2030 Spatial scale: Local Source affected: Transport Indicator: N/A Target emissions reduction: Less than 1 ug/m3
Rushcliffe Borough Council_54	Install speed limit to reduce emissions	Junction improvement	Traffic planning and management: Encouragement of shift of transport modes	Planning	Start date: 2014 Expected end date: 2030 Spatial scale: Local Source affected: Transport Indicator: N/A Target emissions reduction: Less than 1 ug/m3
Rushcliffe Borough Council_55	Ensure Highways Agency consider the AQMA in their policies	Route management	Traffic planning and management: Encouragement of shift of transport modes	Planning	Start date: 2014 Expected end date: 2015 Spatial scale: Local Source affected: Transport Indicator: Written confirmation Target emissions reduction: Less than 1 ug/m3
Rushcliffe Borough Council_56	Integration of AQMA into LTP	Reduce congestion car use	Traffic planning and management: Other measure	Planning	Start date: 2014 Expected end date: 2015 Spatial scale: Local Source affected: Transport Indicator: N/A Target emissions reduction: Less than 1 ug/m3

Measure code	Description	Focus	Classification	Status	Other information
Rushcliffe Borough Council_57	Planning policy: air quality guidance for developers amend/update existing guidance	Reducing offsite impacts on amqa	Other measure: Other measure	Planning	Start date: 2014 Expected end date: 2016 Spatial scale: Local Source affected: Transport Indicator: N/A Target emissions reduction: Less than 1 ug/m3
Rushcliffe Borough Council_58	Planning policy: Ensure AQAP and AQMA are considered in future developments likely to affect the AQMA	Reducing offsite impacts on amqa	Other measure: Other measure	Planning	Start date: 2014 Expected end date: 2014 Spatial scale: Local Source affected: Transport Indicator: N/A Target emissions reduction: Less than 1 ug/m3
Rushcliffe Borough Council_59	Smarter choices:	Reducing traffic source	Traffic planning and management: Encouragement of shift of transport modes	Planning	Start date: 2014 Expected end date: 2030 Spatial scale: Local Source affected: Transport Indicator: N/A Target emissions reduction: Less than 1 ug/m3
Rushcliffe Borough Council_60	Implement policies to ensure mitigation measures are applied where new developments lead to traffic increases in this area. E.g. travel planning, promotion of electric charging points or other emission reduction measures.	Reducing offsite impacts on amqa	Other measure: Other measure	Planning	Start date: 2014 Expected end date: 2030 Spatial scale: Local Source affected: Transport Indicator: N/A Target emissions reduction: Less than 1 ug/m3

Measure code	Description	Focus	Classification	Status	Other information
Rushcliffe Borough Council_61	Planning policy. Develop a Supplementary Planning Document or update the Air Quality Considerations for Developers guide. New development shall have regard to the guide or any SPD published by RBC.	Reducing offsite impacts on amqa	Other measure: Other measure	Planning	Start date: 2014 Expected end date: 2030 Spatial scale: Local Source affected: Transport Indicator: N/A Target emissions reduction: Less than 1 ug/m3
South Holland District Council_1	Replacement of Council Waste fleet vehicles to Euro 6 models	N/A	Other measure: Other measure	Implementation	Start date: 2014 Expected end date: 2014 Spatial scale: Whole town or city Source affected: Transport Indicator: N/A Target emissions reduction: N/A
South Holland District Council_2	Road Narrowing at West Marsh Road/Twin Bridges junction in Spalding to prevent lorries in residential areas	N/A	Traffic planning and management: Other measure	Implementation	Start date: 2006 Expected end date: 2006 Spatial scale: Whole town or city Source affected: Transport Indicator: N/A Target emissions reduction: N/A
South Holland District Council_3	Road widening scheme at Wygate Park/Pinchbeck Road junction, Spalding to improve traffic flow	N/A	Traffic planning and management: Other measure	Implementation	Start date: 2014 Expected end date: 2014 Spatial scale: Whole town or city Source affected: Transport Indicator: N/A Target emissions reduction: N/A

Measure code	Description	Focus	Classification	Status	Other information
South Holland District Council_4	Decrease of Speed limit Pinchbeck Road, Spalding from 40MPH to 30MPH	N/A	Traffic planning and management: Reduction of speed limits and control	Implementation	Start date: 2014 Expected end date: 2014 Spatial scale: Whole town or city Source affected: Transport Indicator: N/A Target emissions reduction: N/A
South Holland District Council_5	Various cycling and pedestrian improvements <a href="http://www.lincolnshire.gov.uk/transport-and-roads/strategy-policy-and-licences/community-travel-zones/spalding-community-travel-zone/44412.article">http://www.lincolnshire.gov.uk/transport-and-roads/strategy-policy-and-licences/community-travel-zones/spalding-community-travel-zone/44412.article</a>	N/A	Traffic planning and management: Other measure	Implementation	Start date: 2014 Expected end date: 2014 Spatial scale: Whole town or city Source affected: Transport Indicator: N/A Target emissions reduction: N/A
South Kesteven District Council_1	Deliver Grantham Southern Relief Road	N/A	Traffic planning and management: Encouragement of shift of transport modes	Implementation	Start date: 2015 Expected end date: 2017 Spatial scale: Local Source affected: Transport Indicator: N/A Target emissions reduction: Currently being calculated
South Kesteven District Council_2	Implement Urban Traffic Management Control to identify areas where traffic may be stacked out of town	N/A	Traffic planning and management: Other measure	Evaluation	Start date: 2014 Expected end date: 2030 Spatial scale: Local Source affected: Transport Indicator: N/A Target emissions reduction: Currently being calculated

Measure code	Description	Focus	Classification	Status	Other information
South Kesteven District Council_3	Improve traffic flows in the AQMA	N/A	Traffic planning and management: Other measure	Evaluation	Start date: 2014 Expected end date: 2030 Spatial scale: Local Source affected: Transport Indicator: N/A Target emissions reduction: Currently being calculated
South Kesteven District Council_4	Improve bus fleet emissions	N/A	Public procurement: Other measure	Evaluation	Start date: 2014 Expected end date: 2030 Spatial scale: Local Source affected: Transport Indicator: N/A Target emissions reduction: Currently being calculated
South Kesteven District Council_5	Encourage modal shift through alternative travel plans e.g. TravelSmart	N/A	Other measure: Other measure	Evaluation	Start date: 2014 Expected end date: 2030 Spatial scale: Local Source affected: Transport Indicator: N/A Target emissions reduction: Currently being calculated
South Kesteven District Council_6	Implement a Park and Stride scheme	N/A	Traffic planning and management: Encouragement of shift of transport modes	Evaluation	Start date: 2014 Expected end date: 2030 Spatial scale: Local Source affected: Transport Indicator: N/A Target emissions reduction: Currently being calculated



Measure code	Description	Focus	Classification	Status	Other information
South Kesteven District Council_7	Reduce traffic idling in the AQMA	N/A	Permit systems and economic instruments: Introduction/increase of environment taxes	Evaluation	Start date: 2014 Expected end date: 2030 Spatial scale: Local Source affected: Transport Indicator: N/A Target emissions reduction: Currently being calculated
South Kesteven District Council_8	Retrofit pollution abatement technology to our older commercial fleet vehicles	N/A	Public procurement: Other measure	Evaluation	Start date: 2014 Expected end date: 2030 Spatial scale: Local Source affected: Transport Indicator: N/A Target emissions reduction: Currently being calculated
South Kesteven District Council_9	Facilitate better travel planning amongst employees e.g. car sharing	N/A	Traffic planning and management: Encouragement of shift of transport modes	Evaluation	Start date: 2014 Expected end date: 2030 Spatial scale: Local Source affected: Transport Indicator: N/A Target emissions reduction: Currently being calculated
South Kesteven District Council_10	Implement initiatives to educate communities on air pollution and ways to minimise their impact on air quality	N/A	Public procurement: Other measure	Evaluation	Start date: 2014 Expected end date: 2030 Spatial scale: Local Source affected: Transport Indicator: N/A Target emissions reduction: Currently being calculated

Measure code	Description	Focus	Classification	Status	Other information
South Kesteven District Council_11	Work with Sustrans to promote walking and cycling initiatives	N/A	Traffic planning and management: Encouragement of shift of transport modes	Evaluation	Start date: 2014 Expected end date: 2030 Spatial scale: Local Source affected: Transport Indicator: N/A Target emissions reduction: Currently being calculated
South Kesteven District Council_12	Work in partnership to encourage participation in school and workplace travel plans	N/A	Traffic planning and management: Encouragement of shift of transport modes	Evaluation	Start date: 2014 Expected end date: 2030 Spatial scale: Local Source affected: Transport Indicator: N/A Target emissions reduction: Currently being calculated
South Northamptonshire Council_1	The Council will continue to work with the Highway Agency, neighbouring authorities and Northamptonshire County Council in considering schemes to upgrade and improve the public transportation system.	The Council will continue to work with the Highway Agency, neighbouring authorities and Northamptonshire County Council in considering schemes to upgrade and improve the public transportation system.	Traffic planning and management: Improvement of public transport	Implementation	Start date: 2010 Expected end date: 2014 Spatial scale: Whole agglomeration Source affected: Transport Indicator: N/A Target emissions reduction: Negligible
South Northamptonshire Council_2	The Council will continue to work with Northamptonshire County council in promoting the use of the public transport system.	The Council will continue to work with Northamptonshire County council in promoting the use of the public transport system.	Traffic planning and management: Improvement of public transport	Implementation	Start date: 2010 Expected end date: 2014 Spatial scale: Whole agglomeration Source affected: Transport Indicator: N/A Target emissions reduction: Negligible

Measure code	Description	Focus	Classification	Status	Other information
South Northamptonshire Council_3	The Council will continue to work with Northamptonshire County Council to promote and educate the public in the use of non-motorised travel. To this end the cycle network and footpaths will be expanded and improved.	The Council will continue to work with Northamptonshire County Council to promote and educate the public in the use of non-motorised travel. To this end the cycle network and footpaths will be expanded and improved.	Traffic planning and management: Encouragement of shift of transport modes	Implementation	Start date: 2010 Expected end date: 2030 Spatial scale: Whole agglomeration Source affected: Transport Indicator: N/A Target emissions reduction: N/A
South Northamptonshire Council_4	The Council will continue the development of its own sustainable travel plan.	The Council will continue the development of its own sustainable travel plan.	Traffic planning and management: Encouragement of shift of transport modes	Planning	Start date: 2015 Expected end date: 2030 Spatial scale: Local Source affected: Transport Indicator: N/A Target emissions reduction: None
South Northamptonshire Council_5	The Council will also undertake targeted travel awareness initiatives and campaigns and will encourage other employers and educational establishments to implement sustainable travel plans.	The Council will also undertake targeted travel awareness initiatives and campaigns and will encourage other employers and educational establishments to implement sustainable travel plans.	Traffic planning and management: Encouragement of shift of transport modes	Other	Start date: 2014 Expected end date: 2014 Spatial scale: Whole agglomeration Source affected: Transport Indicator: N/A Target emissions reduction: N/A

Measure code	Description	Focus	Classification	Status	Other information
South Northamptonshire Council_6	The Council will continue to work with the Highway agency, neighbouring authorities and Northamptonshire County Council in considering schemes to improve the flow of traffic through and around Towcester as well as to protect the air quality within Towcester from worsening.	The Council will continue to work with the Highway agency, neighbouring authorities and Northamptonshire County Council in considering schemes to improve the flow of traffic through and around Towcester as well as to protect the air quality within Towcester from worsening.	Traffic planning and management: Other measure	Implementation	Start date: 2014 Expected end date: 2030 Spatial scale: Whole town or city Source affected: Transport Indicator: Significant reduction of Nitrogen dioxide in Towcester town centre Target emissions reduction: 45% reduction of emissions of Nitrous oxides adjacent to the Market Square - this equates to approximately 10 g/m3.Nitrogen dioxide levels in location below 40 g/m3.
South Northamptonshire Council_7	N/A	The Council will continue to lobby the Highways Agency, Northamptonshire County Council and West Northamptonshire Development Corporation in order to ensure the feasibility of any of the options previously considered are assessed and if possible implemented	Traffic planning and management: Other measure	Implementation	Start date: 2008 Expected end date: 2015 Spatial scale: Local Source affected: Transport Indicator: Significant reduction of Nitrogen dioxide in Towcester town centre Target emissions reduction: Improvements to the A43/A5 roundabout are currently scheduled in to be completed by the end of 2014. This will help the flow of traffic out of Towcester town centre

Measure code	Description	Focus	Classification	Status	Other information
South Northamptonshire Council_8	The Council will continue to work with the Highways Agency and Northamptonshire County Council to develop a parking strategy for Towcester and to enforce roadside parking restrictions.	The Council will continue to work with the Highways Agency and Northamptonshire County Council to develop a parking strategy for Towcester and to enforce roadside parking restrictions.	Traffic planning and management: Management of parking places	Implementation	Start date: 2014 Expected end date: 2014 Spatial scale: Local Source affected: Transport Indicator: Significant reduction of Nitrogen dioxide in Towcester town centre Target emissions reduction: 45% reduction of emissions of Nitrous oxides adjacent to the Market Square - this equates to approximately 10 g/m <sup>3</sup> . Nitrogen dioxide levels in location below 40 g/m <sup>3</sup>
South Northamptonshire Council_9	The Council will actively support the larger national schemes that may improve air quality along the motorway and trunk road network.	The Council will actively support the larger national schemes that may improve air quality along the motorway and trunk road network.	Traffic planning and management: Other measure	Implementation	Start date: 2014 Expected end date: 2015 Spatial scale: Local Source affected: Transport Indicator: Improvements to the 1) A43/A5 junction at Towcester 2) M40 junction 10. Target emissions reduction: Improvements to the A5/A43 junction will help traffic flow through Towcester town centre
South Northamptonshire Council_10	N/A	The Council will actively pursue the introduction of licensing conditions to progressively reduce the number of older taxis and private hire vehicles.	Other measure: Other measure	Implementation	Start date: 2010 Expected end date: 2014 Spatial scale: Whole agglomeration Source affected: Transport Indicator: N/A Target emissions reduction: None

Measure code	Description	Focus	Classification	Status	Other information
South Northamptonshire Council_11	N/A	The Council will initiate a policy to ensure that its fleet vehicles are well maintained and have the lowest emissions practicable.	Other measure: Other measure	Implementation	Start date: 2008 Expected end date: 2030 Spatial scale: Whole agglomeration Source affected: Transport Indicator: N/A Target emissions reduction: None
South Northamptonshire Council_12	The Council will continue to inspect all of its permitted processes under the PPC regime to ensure compliance. Permits will be updated as and when appropriate to ensure that operation conditions are up to date with the latest guidance.	The Council will continue to inspect all of its permitted processes under the PPC regime to ensure compliance. Permits will be updated as and when appropriate to ensure that operation conditions are up to date with the latest guidance.	Permit systems and economic instruments: Other measure	Implementation	Start date: 2008 Expected end date: 2015 Spatial scale: Whole agglomeration Source affected: Industry including heat and power production Indicator: All permitted processes comply with the permits to control emissions to air Target emissions reduction: None
South Northamptonshire Council_13	The Council will continue to educate residents and businesses to use smokeless fuels or an approved appliance for smokeless combustion. Where appropriate the Council will continue to educate residents and businesses to recycle or compost as much waste as possible rather than via uncontrolled combustion. The Council will also enforce the laws relating to waste and pollution of the environment.	The Council will continue to educate residents and businesses to use smokeless fuels or an approved appliance for smokeless combustion. Where appropriate the Council will continue to educate residents and businesses to recycle or compost as much waste as possible rather than via uncontrolled combustion. The Council will also enforce the laws relating to waste and pollution of the environment.	Other measure: Other measure	Preparation	Start date: 2014 Expected end date: 2030 Spatial scale: Whole agglomeration Source affected: Commercial and residential sources Indicator: Volume of complaints Target emissions reduction: Negligible

Measure code	Description	Focus	Classification	Status	Other information
South Northamptonshire Council_14	The Council will continue to enforce the Clean Air Act 1993 and encourage local businesses to dispose of waste in a responsible manner, so as to prevent or minimise the emissions of dark smoke.	The Council will continue to enforce the Clean Air Act 1993 and encourage local businesses to dispose of waste in a responsible manner, so as to prevent or minimise the emissions of dark smoke.	Public information and Education: Other mechanisms	Implementation	Start date: 2008 Expected end date: 2030 Spatial scale: Whole agglomeration Source affected: Commercial and residential sources Indicator: N/A Target emissions reduction: None
South Northamptonshire Council_15	The Council will continue to take into account the impact on air quality of a potential development when considering planning applications, especially when it could impact directly upon the AQMA.	The Council will continue to take into account the impact on air quality of a potential development when considering planning applications, especially when it could impact directly upon the AQMA.	Other measure: Other measure	Implementation	Start date: 2008 Expected end date: 2015 Spatial scale: Whole agglomeration Source affected: Other, please specify Indicator: Reduction in Nitrogen dioxide levels in Towcester Target emissions reduction: Negligible
South Northamptonshire Council_17	N/A	The council will continue to provide and where possible to improve, the air quality information to members of the public, developers and all its stakeholders.	Public information and Education: Internet	Implementation	Start date: 2008 Expected end date: 2030 Spatial scale: Whole agglomeration Source affected: Other, please specify Indicator: Air Quality web pages are reviewed regularly and kept up to date. Target emissions reduction: None