



Department
for Environment
Food & Rural Affairs



Department
for Transport

Air Quality Plan for tackling roadside nitrogen dioxide concentrations in Greater Manchester Urban Area (UK0003)

July 2017



Scottish Government
Riaghaltas na h-Alba
gov.scot



Department of
Agriculture, Environment
and Rural Affairs
www.daera-ni.gov.uk



Llywodraeth Cymru
Welsh Government



© Crown copyright 2017

You may re-use this information (excluding logos) free of charge in any format or medium, under the terms of the Open Government Licence v.3. To view this licence visit www.nationalarchives.gov.uk/doc/open-government-licence/version/3/ or email PSI@nationalarchives.gsi.gov.uk

Any enquiries regarding this publication should be sent to us at:

air.quality@defra.gsi.gov.uk

www.gov.uk/defra

Contents

1	Introduction	3
1.1	This document	3
1.2	Context	3
1.3	Zone status	3
1.4	Plan structure	4
2	General Information About the Zone	4
2.1	Administrative information	4
2.2	Assessment details	7
2.3	Air quality reporting	9
3	Overall Picture for 2015 Reference Year	9
3.1	Introduction	9
3.2	Reference year: NO ₂ _UK0003_Annual_1	9
4	Measures	15
4.1	Introduction	15
4.2	Source apportionment	15
4.3	Measures	15
4.4	Measures timescales	17
5	Baseline Model Projections	17
5.1	Overview of model projections	17
5.2	Baseline projections: NO ₂ _UK0003_Annual_1	17
	Annexes	23
A	References	23
B	Source apportionment graphs	24
C	Tables of measures	27

1 Introduction

1.1 This document

This document is the Greater Manchester Urban Area agglomeration zone (UK0003) updated air quality plan for tackling roadside nitrogen dioxide (NO₂) concentrations. This is an update to the air quality plan published in December 2015 (<https://www.gov.uk/government/collections/air-quality-plan-for-nitrogen-dioxide-no2-in-uk-2015>).

This plan presents the following information:

- General information regarding the Greater Manchester Urban Area agglomeration zone
- Details of NO₂ exceedance situation within the Greater Manchester Urban Area agglomeration zone
- Details of local air quality measures that have been implemented, will be implemented or are being considered for implementation in this agglomeration zone

This air quality plan for the Greater Manchester Urban Area agglomeration zone should be read in conjunction with the separate UK Air Quality Plan for tackling roadside nitrogen dioxide concentrations (hereafter referred to as the overview document) which sets out, amongst other things, the authorities responsible for delivering air quality improvements and the list of UK and national measures that are applied in some or all UK zones. The measures presented in this zone plan, and the accompanying UK overview document show how the UK will ensure that compliance with the NO₂ limit values is achieved in the shortest possible time.

This plan should also be read in conjunction with the supporting UK Technical Report which presents information on assessment methods, input data and emissions inventories used in the analysis presented in this plan.

1.2 Context

Two NO₂ limit values for the protection of human health have been set in the Air Quality Directive (2008/50/EC). These are:

- The annual mean limit value: an annual mean concentration of no more than 40 $\mu\text{g m}^{-3}$
- The hourly limit value: no more than 18 exceedances of 200 $\mu\text{g m}^{-3}$ in a calendar year

The Air Quality Directive stipulates that compliance with the NO₂ limit values will be achieved by 01/01/2010.

1.3 Zone status

The assessment undertaken for the Greater Manchester Urban Area agglomeration zone indicates that the annual limit value was exceeded in 2015 but is likely to be achieved by 2022 through the introduction of measures included in the baseline. When combined with the measures outlined in the overview document for the UK we expect this zone to be compliant by 2021.

1.4 Plan structure

General administrative information regarding this agglomeration zone is presented in Section 2.

Section 3 then presents the overall picture with respect to NO₂ levels in this agglomeration zone for the 2015 reference year of this air quality plan. This includes a declaration of exceedance situations within the agglomeration zone and presentation of a detailed source apportionment for each exceedance situation.

An overview of the measures already taken and to be taken within the agglomeration zone both before and after 2015 is given in Section 4.

Baseline modelled projections for each year from 2017 to 2030 for each exceedance situation are presented in Section 5. The baseline projections presented here include, where possible, the impact of measures that have already been taken and measures for which the relevant authority has made a firm commitment to implement. However, it has not been possible to quantify the impact of all the measures. This section therefore also explains which measures have been quantified, and hence included in the model projections, and which measures have not been quantified.

2 General Information About the Zone

2.1 Administrative information

Zone name: Greater Manchester Urban Area

Zone code: UK0003

Type of zone: agglomeration zone

Reference year: 2015

Extent of zone: Figure 1 shows the area covered by the Greater Manchester Urban Area agglomeration zone.

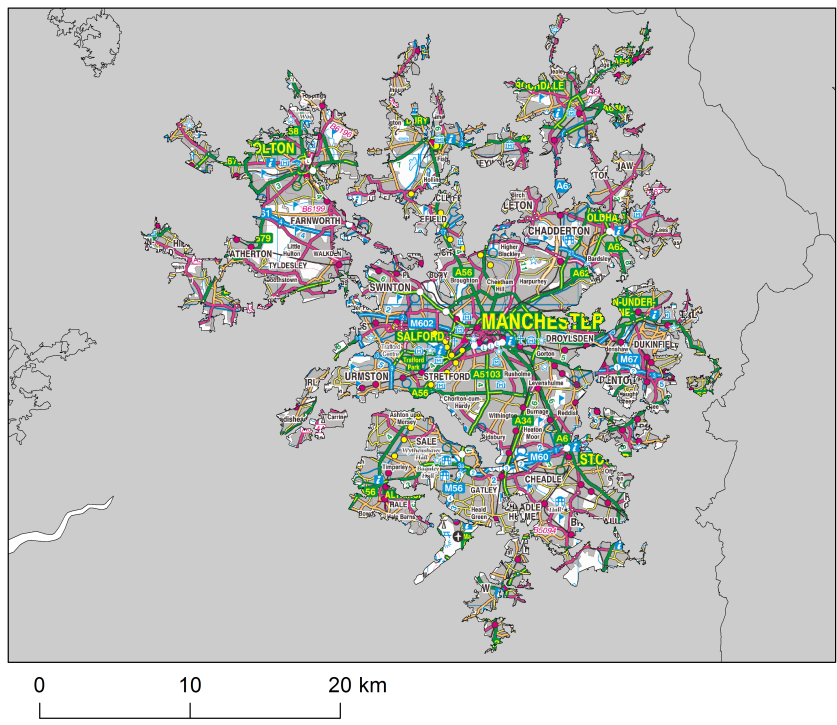
Local Authorities within the zone: Figure 2 shows the location of Local Authorities within the agglomeration zone. A list of these Local Authorities is also given below. The numbers in the list correspond to the numbers in Figure 2.

1. Bolton Metropolitan Borough Council
2. Bury Metropolitan Borough Council
3. Cheshire East
4. Manchester City Council
5. Oldham Metropolitan Borough Council
6. Rochdale Metropolitan Borough Council
7. Rossendale Borough Council
8. Salford Metropolitan Borough Council
9. Stockport Metropolitan Borough Council
10. Tameside Metropolitan Borough Council
11. Trafford Metropolitan Borough Council

12. Wigan Metropolitan Borough Council

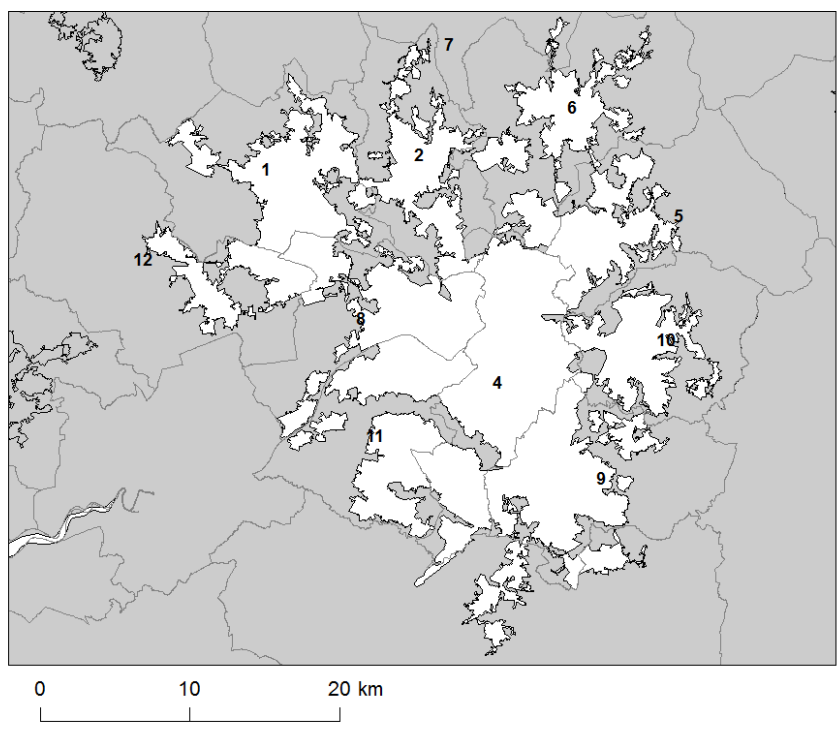
(Note: Local Authority boundaries do not necessarily coincide with zone boundaries. Hence Local Authorities may be listed within more than one zone plan.)

Figure 1: Map showing the extent of the Greater Manchester Urban Area agglomeration zone (UK0003).



© Crown copyright. All rights reserved Defra, License number 100022861 [2017]

Figure 2: Map showing Local Authorities within the Greater Manchester Urban Area agglomeration zone (UK0003).



© Crown copyright. All rights reserved Defra, License number 100022861 [2017]

2.2 Assessment details

Measurements

NO₂ measurements in this zone were available in 2015 from the following national network monitoring stations (NO₂ data capture¹ for each station in 2015 shown in brackets):

1. Manchester Piccadilly GB0613A (98%)
2. Manchester South GB0649A (99%)
3. Salford Eccles GB0660A (98%)
4. Shaw Crompton Way GB1031A (80%)
5. Bury Whitefield Roadside GB1040A (70%)

Full details of monitoring stations within the Greater Manchester Urban Area agglomeration zone are available from <http://uk-air.defra.gov.uk/networks/network-info?view=aurn>.

Modelling

Modelling for the 2015 reference year has been carried out for the whole of the UK. This modelling covers the following extent within this zone:

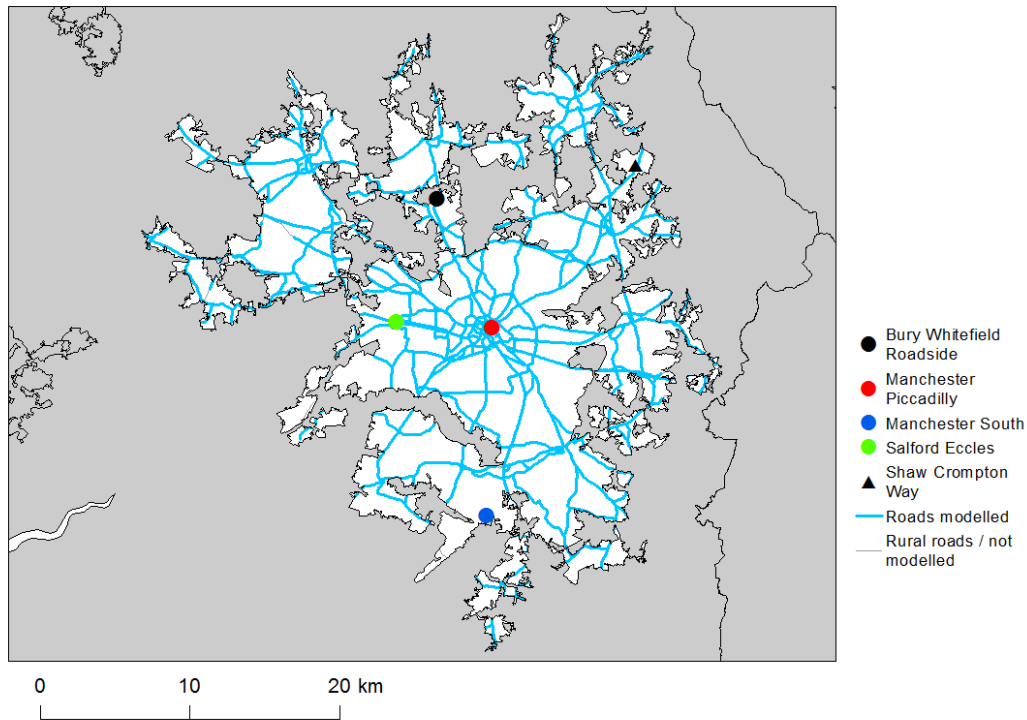
- Total background area within zone (approx): 554 km²
- Total population within zone (approx): 2,078,782 people

Zone maps

Figure 3 presents the location of the NO₂ monitoring stations within this zone for 2015 and the roads for which NO₂ concentrations have been modelled. NO₂ concentrations at background locations have been modelled across the entire zone at a 1 km x 1 km resolution.

¹Annual data capture is the proportion of hours in a year for which there are valid measurements at a monitoring station, expressed in this document as a percentage. The Implementing Provisions on Reporting (IPR) guidance requires that a minimum data capture of 85% is required for compliance reporting (that is 90% valid data, plus a 5% allowance for data loss due to planned maintenance and calibration). Monitoring stations with at least 75% data capture have been included in the modelling analysis to ensure that a greater number of operational monitoring sites have been used for model calibration and verification purposes. For more information on compliance reporting under European Directives see Section 2.3.

Figure 3: Map showing the location of the NO₂ monitoring stations with valid data in 2015 and roads where concentrations have been modelled within the Greater Manchester Urban Area (UK0003) agglomeration zone.



© Crown copyright. All rights reserved Defra, License number 100022861 [2017]

2.3 Air quality reporting

From 2001 to 2012 the UK has reported annually on air quality concentrations using a standard Excel questionnaire (Decision 2004/461/EC). These questionnaires are available online from <http://cdr.eionet.europa.eu/gb/eu/annualair>. Since 2013 reporting has been via an e-reporting system (Decision 2011/850/EU) <http://cdr.eionet.europa.eu/gb/eu/>.

In addition, the UK has reported on air quality plans and programmes (Decision 2004/224/EC) since 2003. The most recent previous UK air quality plan for nitrogen dioxide was published in 2015. The plan and supporting documents are available at <https://www.gov.uk/government/collections/air-quality-plan-for-nitrogen-dioxide-no2-in-uk-2015> and the submission of this plan via e-reporting is published at <http://cdr.eionet.europa.eu/gb/eu/aqd/h/envvryhbq/>. Historic plans and programmes are available on <http://cdr.eionet.europa.eu/gb/eu/aqpp>.

3 Overall Picture for 2015 Reference Year

3.1 Introduction

There are two limit values for the protection of health for NO₂. These are:

- The annual limit value (annual mean concentration of no more than 40 µgm⁻³)
- The hourly limit value (no more than 18 hourly exceedances of 200 µgm⁻³ in a calendar year)

Within the Greater Manchester Urban Area agglomeration zone the annual limit value was exceeded in 2015. Hence, one exceedance situation for this zone has been defined, NO₂_UK0003_Annual_1, which covers exceedances of the annual limit value. This exceedance situation is described below.

3.2 Reference year: NO₂_UK0003_Annual_1

The NO₂_UK0003_Annual_1 exceedance situation covers all exceedances of the annual mean limit value in the Greater Manchester Urban Area agglomeration zone in 2015.

Compliance with the annual limit value in this exceedance situation has been assessed using a combination of air quality measurements and modelling. Table 1 presents measured annual concentrations at national network stations in this exceedance situation since the 1st Daughter Directive (1999/30/EC) came into force in 2001. This shows that there were no measured exceedances of the annual limit value in this zone in 2015. Table 2 summarises modelled annual mean NO₂ concentrations in this exceedance situation for the same time period. This table shows that, in 2015, 90.8 km of road length was modelled to exceed the annual limit value. There were no modelled background exceedances of the annual limit value. The maximum measured concentration in the zone varies due to changes in emissions and varying meteorology in different years. However, the models are also updated each year to take into account the most up-to-date science, so the modelled results for different years may not be directly comparable. Maps showing the modelled annual mean NO₂ concentrations for 2015 at background and at roadside locations are presented in Figures 4 and 5 respectively. All modelled exceedances of the annual limit value are coloured orange or red in the maps.

The modelling carried out for this exceedance situation has also been used to determine the annual mean NO_x source apportionment for all modelled locations. Emissions to air are regulated in terms of oxides of nitrogen

(NO_x), which is the term used to describe the sum of nitrogen dioxide (NO₂) and nitric oxide (NO). Ambient NO₂ concentrations include contributions from both directly emitted primary NO₂ and secondary NO₂ formed in the atmosphere by the oxidation of NO. As such, it is not possible to calculate an unambiguous source apportionment specifically for NO₂ concentrations; therefore the source apportionment in this plan is presented for NO_x, rather than for NO₂ (for further details please see the UK Technical Report). Table 3 summarises the modelled NO_x source apportionment for the section of road with the highest NO₂ concentration in this exceedance situation in 2015. This is important information because it shows which sources need to be tackled at the location with the largest compliance gap in the exceedance situation.

Figure B.1 in Annex B presents the annual mean NO_x source apportionment for each section of road within the NO₂_UK0003_Annual_1 exceedance situation (i.e. the source apportionment for all exceeding roads only) in 2015.

Table 1: Measured annual mean NO₂ concentrations at national network stations in NO2_UK0003_Annual_1 for 2001 onwards, μgm^{-3} (a). Data capture shown in brackets.

Site name (EOI code)	2001	2002	2003	2004	2005	2006	2007	2008	2009	2010	2011	2012	2013	2014	2015
Bolton (GB0654A)	35 (98)	35 (98)	36 (98)	29 (94)	25 (59)	23 (68)		23 (28)							
Bury Roadside (GB0652A)	68 (98)	68 (94)	76 (89)	69 (92)	64 (90)	73 (81)	65 (81)	69 (96)	72 (83)						
Manchester Piccadilly (GB0613A)	44 (73)	39 (90)	45 (98)	43 (94)	45 (49)	44 (97)	44 (96)	43 (78)	42 (92)	45 (95)	44 (97)	41 (89)	39 (94)	40 (96)	39 (98)
Manchester South (GB0649A)	22 (96)	21 (89)	22 (98)	19 (87)	17 (6)	16 (88)	21 (86)	24 (92)	24 (96)	28 (99)	23 (99)	24 (97)	22 (91)	22 (99)	20 (99)
Manchester Town Hall (GB0453A)	47 (99)	43 (99)	44 (99)	40 (95)	43 (95)	42 (87)	37 (72)								
Salford Eccles (GB0660A)	41 (97)	38 (97)	40 (96)	34 (96)	39 (83)	35 (97)	34 (91)	36 (92)	39 (65)	42 (86)	33 (87)	28 (89)	30 (96)	30 (95)	27 (98)
Stockport (GB0648A)	39 (99)	33 (68)													
Stockport Shaw Heath (GB0775A)		38 (22)	38 (98)	36 (91)	31 (91)	31 (83)	28 (59)								
Wigan Leigh (GB0736A)	37 (97)	30 (98)	31 (92)	25 (71)											
Shaw Crompton Way (GB1031A)														32 (69)	33 (80)
Bury Whitefield Roadside (GB1040A)															25 (70)

(a) Annual Mean Limit Value = $40 \mu\text{gm}^{-3}$

Table 2: Annual mean NO₂ model results in NO₂_UK0003_Annual_1 for 2001 onwards.

	2001	2002	2003	2004	2005	2006	2007	2008	2009	2010	2011	2012	2013	2014	2015
Road length exceeding (km)	535.2	293.4	501.3	402.0	412.6	382.5	425.7	260.5	212.0	341.0	250.7	233.2	170.3	131.0	90.8
Background exceeding (km ²)	101	1	14	0	3	1	0	0	0	5	0	0	0	0	0
Maximum modelled concentration (μgm ⁻³) (a)	73.8	63.0	73.2	70.3	79.9	75.5	77.8	78.1	78.8	101.0	74	75	61	58	56

(a) Annual Mean Limit Value = 40 μgm⁻³

Table 3: Modelled annual mean NO_x source apportionment at the location with the highest NO₂ concentration in 2015 in NO2_UK0003_Annual_1 (μgm⁻³) traffic count point 99618 on the A635; OS grid (m): 392800, 398500) .

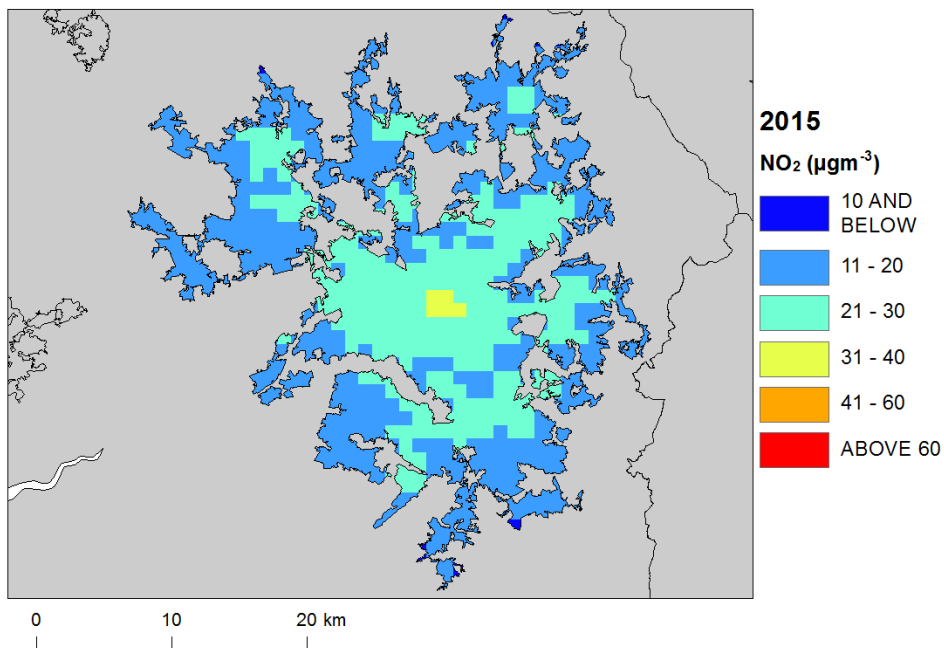
Spatial scale	Component	Concentration at highest road link (a)
Regional background sources NO _x (i.e. contributions from distant sources of > 30 km from the receptor).	Total	5.7
	From within the UK	3.6
	From transboundary sources (includes shipping and other EU member states)	2.1
Urban background sources NO _x (i.e. sources located within 0.3 - 30 km from the receptor).	Total	39.4
	From road traffic sources	24.1
	From industry (including heat and power generation)	3.5
	From agriculture	NA
	From commercial/residential sources	4.5
	From shipping	0.0
	From off road mobile machinery	5.7
	From natural sources	NA
	From transboundary sources	NA
From other urban background sources	1.5	
Local sources NO _x (i.e. contributions from sources < 0.3 km from the receptor).	Total	98.7
	From petrol cars	8.1
	From diesel cars	35.2
	From HGV rigid (b)	15.1
	From HGV articulated (b)	9.0
	From buses	5.5
	From petrol LGVs (c)	0.1
	From diesel LGVs (c)	25.6
From motorcycles	0.1	
From London taxis	0.0	
Total NO _x (i.e. regional background + urban background + local components)		143.8
Total NO ₂ (i.e. regional background + urban background + local components)		56

(a) Components are listed with NO_x concentration of NA when there is no source from this sector.

(b) HGV = heavy goods vehicle

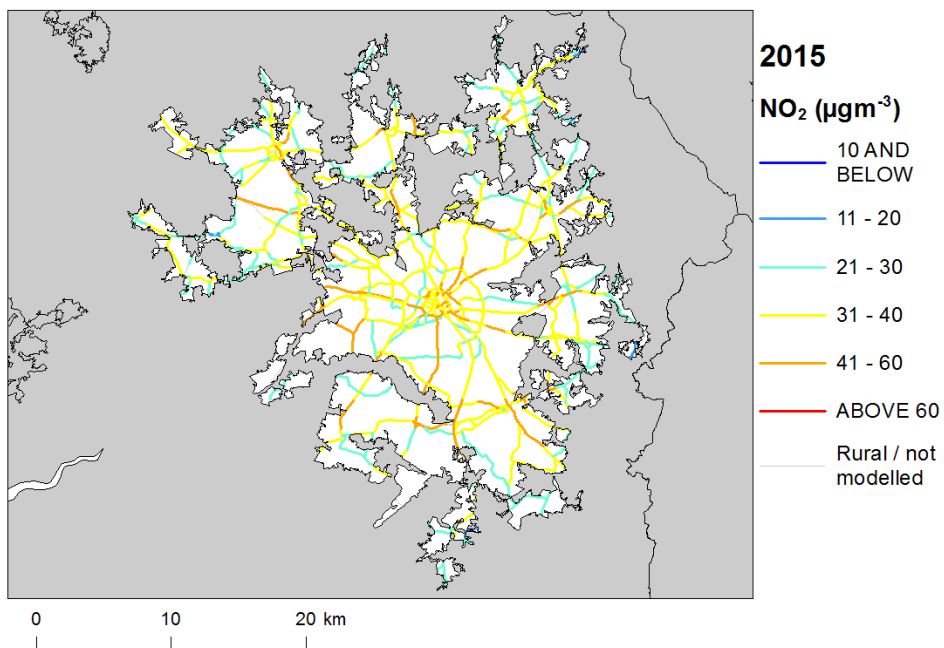
(c) LGV = light goods vehicle

Figure 4: Map of modelled background annual mean NO₂ concentrations 2015. Modelled exceedances of the annual limit value are shown in orange and red.



© Crown copyright. All rights reserved Defra, License number 100022861 [2017]

Figure 5: Map of modelled roadside annual mean NO₂ concentrations 2015. Modelled exceedances of the annual limit value are shown in orange and red.



© Crown copyright. All rights reserved Defra, License number 100022861 [2017]

4 Measures

4.1 Introduction

This section gives details of measures that address exceedances of the NO₂ limit values within Greater Manchester Urban Area agglomeration zone. This includes both measures that have already been taken and measures for which there is a firm commitment that they will be taken.

Section 5 then explains the extent to which it has been possible to incorporate the impacts of these measures into the baseline modelling carried out for this assessment.

4.2 Source apportionment

It is important to understand which sources are responsible for causing the exceedance in order to most effectively tailor measures to address the NO₂ exceedance situation described in Section 3 above. This can be achieved by considering the source apportionment for the exceedance situation, also presented in Section 3. A summary of what the source apportionment shows and the implications for which measures would therefore be appropriate is given here.

Local road traffic was the dominant source in this exceedance location in the reference year. The largest contribution was from diesel cars at the location of maximum exceedance with a contribution of 35.2 $\mu\text{g}\text{m}^{-3}$ of NO_x out of a total of 143.8 $\mu\text{g}\text{m}^{-3}$ of NO_x. Diesel cars and diesel LGVs were important sources on the motorway roads with the highest concentrations in this exceedance situation. Diesel cars, diesel LGVs and on some roads rigid and articulated HGVs or buses were important sources on the primary roads with the highest concentrations.

This indicates that appropriate measures should impact on local road traffic sources in this zone. Other measures to address the urban background sources may also be beneficial.

4.3 Measures

Measures potentially affecting NO₂ in this agglomeration zone have been taken and/or are planned at a range of administrative levels. These are:

- European Union
- National (i.e. England, Scotland, Wales, Northern Ireland or whole UK)
- Local (i.e. UK Local Authorities)

Details of European Union measures (e.g. Euro Standards, Fuel Quality Directives, Integrated Pollution Prevention and Control) can be found on the European Commission's website (http://ec.europa.eu/environment/air/index_en.htm). Details of national measures are given in the UK overview document.

Relevant Local Authority measures within this exceedance situation are listed in Table C.1 (see Annex C). Table C.1 lists measures which a local authority has carried out or is in the process of carrying out, plus additional measures which the local authority is committed to carrying out or is investigating with the expectation of carrying out in the future.

Overview

Within the zone, a significant number of measures have been introduced to help improve levels of air quality e.g. promoting cycling and walking, the introduction of an electric vehicle infrastructure scheme, along with participation in a feasibility study into a Low Emission Zone.

In 2016 the Greater Manchester Transport Strategy 2040, along with a Delivery Plan for the period 2016/17 - 2020/21, was published. The 2040 Strategy provides a vision of what a successful transport system might look like in 2040, to support Greater Manchester's wider economic, social and environmental ambitions. In order to support these ambitions, a number of outcomes were identified as necessary, including:

- More people travelling actively;
- More people travelling by non-car modes;
- Reduce congestion;
- More reliable journey times;
- Infrastructure designed and maintained to minimize environmental impact;
- Reduce emissions of NO₂ and CO₂.

The Greater Manchester Urban Area is promoting sustainable transport choices by placing public transport at the heart of the transport network while encouraging more cycling and walking. It is intended that this will help a shift away from using cars and reduce emissions. The area has a Local Sustainable Transport Fund which is projected to take 26 million km of commuter car journeys off the roads each year by turning them into 10 million extra public transport journeys and two million extra cycling trips. Furthermore, the Greater Manchester Cycle City scheme is forecast to remove 2,393,700 car kilometres per year across Greater Manchester. Work in the City Centre is also alleviating impacts from the Inner Relief Road.

The area will build on policies and measures to encourage a modal shift from private car to public transport e.g. a Metrolink from Manchester/Oldham/Rochdale has produced no vehicle emissions at source.

A Delivery and Servicing Plan (DSP) toolkit has recently been developed which is designed to assist businesses to identify opportunities for better management of deliveries. The DSP will help to reduce the negative impacts of delivery-related activities, such as harmful emissions, congestion and collisions and will encourage the movement of goods by low emission vehicles. The toolkit is specifically designed to target deliveries in the congested areas such as city and town centres as well as key radial routes.

Greener transport methods have been deployed through an electric vehicle infrastructure scheme to encourage the uptake of electric vehicles including the installation of 13 electric charging bays. Greater Manchester is also working with bus operators to reduce bus emissions.

Freight transport is a particular focus of a number of actions. Pilot freight consolidation projects are underway, with European funding, for example on the Oxford Road corridor, with potential others schemes looking to work in partnership with local businesses and universities. The Port Salford Tri-modal site will see improved freight coordination between road, rail and sea transport.

Greater Manchester, as part of a consortium of ten local authorities, was awarded funding from the Air Quality Grant programme in 2016 for a Clean Air Zone feasibility study. This will determine the benefits and impacts of a Clean Air Zone for Greater Manchester.

The Greater Manchester Low-Emission Strategy and the complementary Greater Manchester Air Quality Action Plan, published in 2016, concentrate on programmes and initiatives to address emissions from road transport - and encourage sustainable travel including public transport, cycling and walking - in order to improve air quality and contribute to a reduction in carbon dioxide emissions in line with the Greater Manchester Climate Change Strategy and Implementation Plan. The Low-Emission Strategy sets out a framework for policies and measures to:

- Reduce air pollution as a contributor to ill-health in Greater Manchester;
- Contribute to a reduction in Greater Manchester's carbon footprint; and
- Encourage low-emission behaviours in the culture and lifestyles of the city region.

4.4 Measures timescales

Timescales for national measures are given in the UK overview document.

Local Authorities report on progress with the implementation of their action plans annually and review action plan measures regularly. Information on local measures was collected in February/March 2015. Local authorities were asked to review and, where necessary, provide updates to measures in March/April 2017. Hence, any Local Authority action plans and measures adopted by Local Authorities after this time have not been included in this air quality plan, unless additional information was provided during the consultation process.

The reference year for this air quality plan is 2015. Where measures started and finished before 2015, then the improvement in air quality resulting from these measures will have already taken place before the reference year and the impact of these measures will have been included in the assessment where the measure has had an impact on the statistics used to compile the emission inventory. Many measures started before the reference year and will continue to have a beneficial impact on air quality well beyond the reference year. Measures with a start date before 2015 and an end date after 2015 may have an impact on concentrations in the reference year and a further impact in subsequent years. Where the Status column in Annex C is 'Implementation', this shows that this measure is already underway or that there is a commitment for this measure to go ahead. Where the Status is 'Planning', 'Preparation' or 'Other' the level of commitment is less clear and it is possible some of these measures may not go ahead.

5 Baseline Model Projections

5.1 Overview of model projections

Model projections for each year from 2017 to 2030, starting from the 2015 reference year described in Section 3, have been calculated in order to determine when compliance with the NO₂ limit values is likely to be achieved on the basis of EU, regional and local measures currently planned. Details of the methods used for the baseline emissions and projections modelling are provided in the UK technical report.

For national measures, it has not been possible to quantify the impact of all measures on emissions and ambient concentrations. The impact for all quantifiable measures has been included in the baseline projections.

The impacts of the individual Local Authority measures have not been explicitly included in the baseline model projections. However, measures may have been included implicitly if they have influenced the traffic counts for 2015 (used as a basis for the compilation of the emission inventory) or in the traffic activity projections to 2020 and beyond (used to calculate the emissions projections). It should be recognised that these measures will have a beneficial impact on air quality, even if it has not been possible to quantify this impact here.

5.2 Baseline projections: NO₂_UK0003_Annual_1

Table 4 presents summary results for the baseline model projections for each year from 2017 to 2030 for the NO₂_UK0003_Annual_1 exceedance situation. This shows that the maximum modelled annual mean NO₂

concentration predicted for 2020 in this exceedance situation is $45 \mu\text{gm}^{-3}$. By 2022, the maximum modelled annual mean NO_2 concentration is predicted to drop to $40 \mu\text{gm}^{-3}$. Hence, the model results suggest that compliance with the NO_2 annual limit value is likely to be achieved by 2022 under baseline conditions.

Figure 6 and 7 presents maps of projected annual mean NO_2 concentrations at background and roadside locations respectively in 2022, the year at which compliance is achieved. For reference Figures 8 and 9 show maps of projected annual mean NO_2 concentrations in 2020, 2025 and 2030 for background and roadside locations respectively.

It should be noted that the baseline projections presented here include the impacts of some measures, where they can be quantified, that have already been or will be implemented.

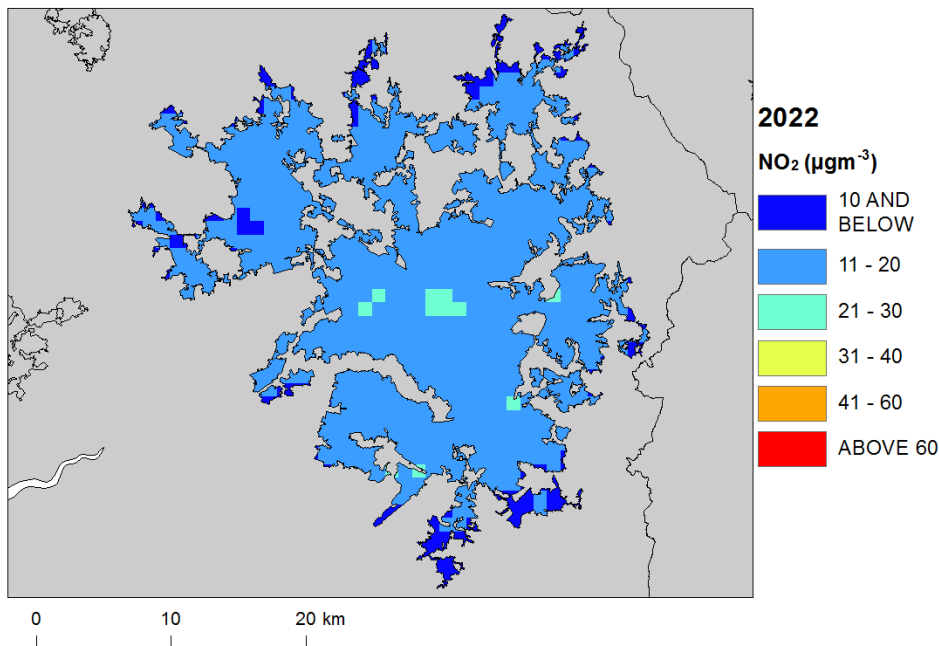
Table 4: Annual mean NO₂ model results in NO₂_UK0003_Annual_1.

	2015	2017	2018	2019	2020	2021	2022	2023	2024	2025	2026	2027	2028	2029	2030
Road length exceeding (km)	90.8	53.0	44.3	30.4	16.0	7.4	0.0	0.0	0.0	0.0	0.0	0.0	0.0	0.0	0.0
Background exceeding (km ²)	0	0	0	0	0	0	0	0	0	0	0	0	0	0	0
Maximum modelled concentration NO ₂ (μgm ⁻³) (a)	56	53	50	48	45	42	40	38	36	34	32	31	30	29	28
Corresponding modelled concentration NO _x (μgm ⁻³) (b)	144	130	122	114	106	98	91	85	79	74	70	66	63	60	58

(a) Annual Mean Limit Value = 40 μgm⁻³

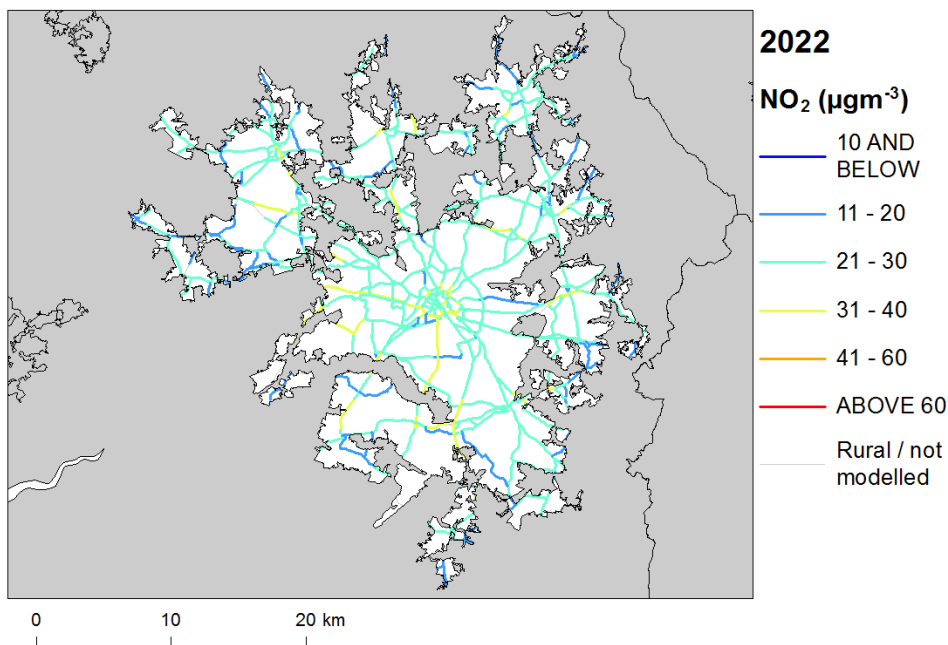
(b) NO_x is recorded here for comparison with the NO_x source apportionment graphs for 2015 presented in Annex B of this plan. Limit values for EU directive purposes are based on NO₂.

Figure 6: Background baseline projections of annual mean NO₂ concentrations in 2022, the year at which compliance is achieved under baseline conditions. Modelled exceedances of the annual limit value are shown in orange and red.



© Crown copyright. All rights reserved Defra, License number 100022861 [2017]

Figure 7: Roadside baseline projections of annual mean NO₂ concentrations in 2022, the year at which compliance is achieved under baseline conditions. Modelled exceedances of the annual limit value are shown in orange and red.



© Crown copyright. All rights reserved Defra, License number 100022861 [2017]

Figure 8: Background baseline projections of annual mean NO₂ concentrations in 2020, 2025 and 2030. 2015 is also included here for reference. Modelled exceedances of the annual limit value are shown in orange and red.

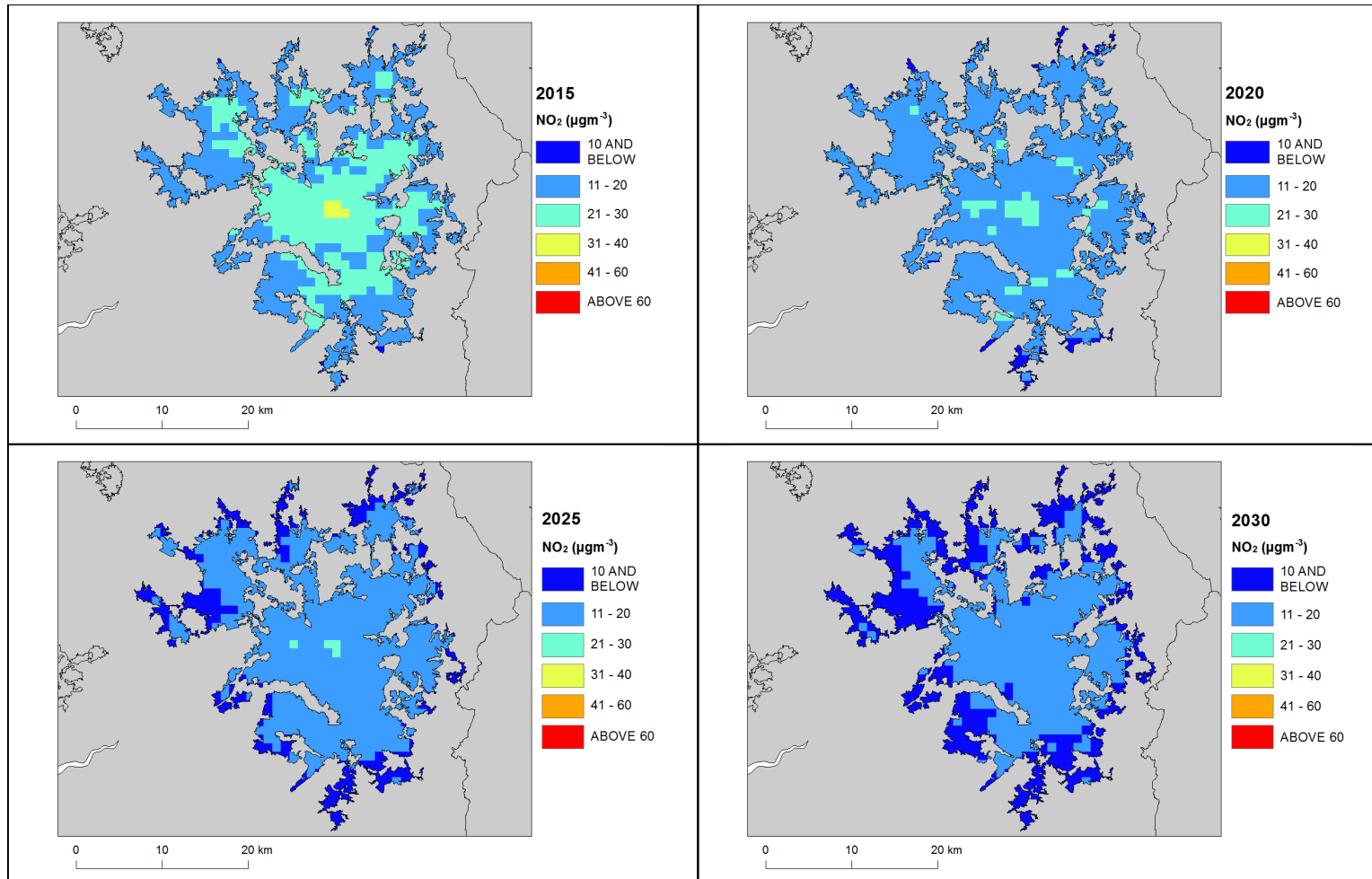
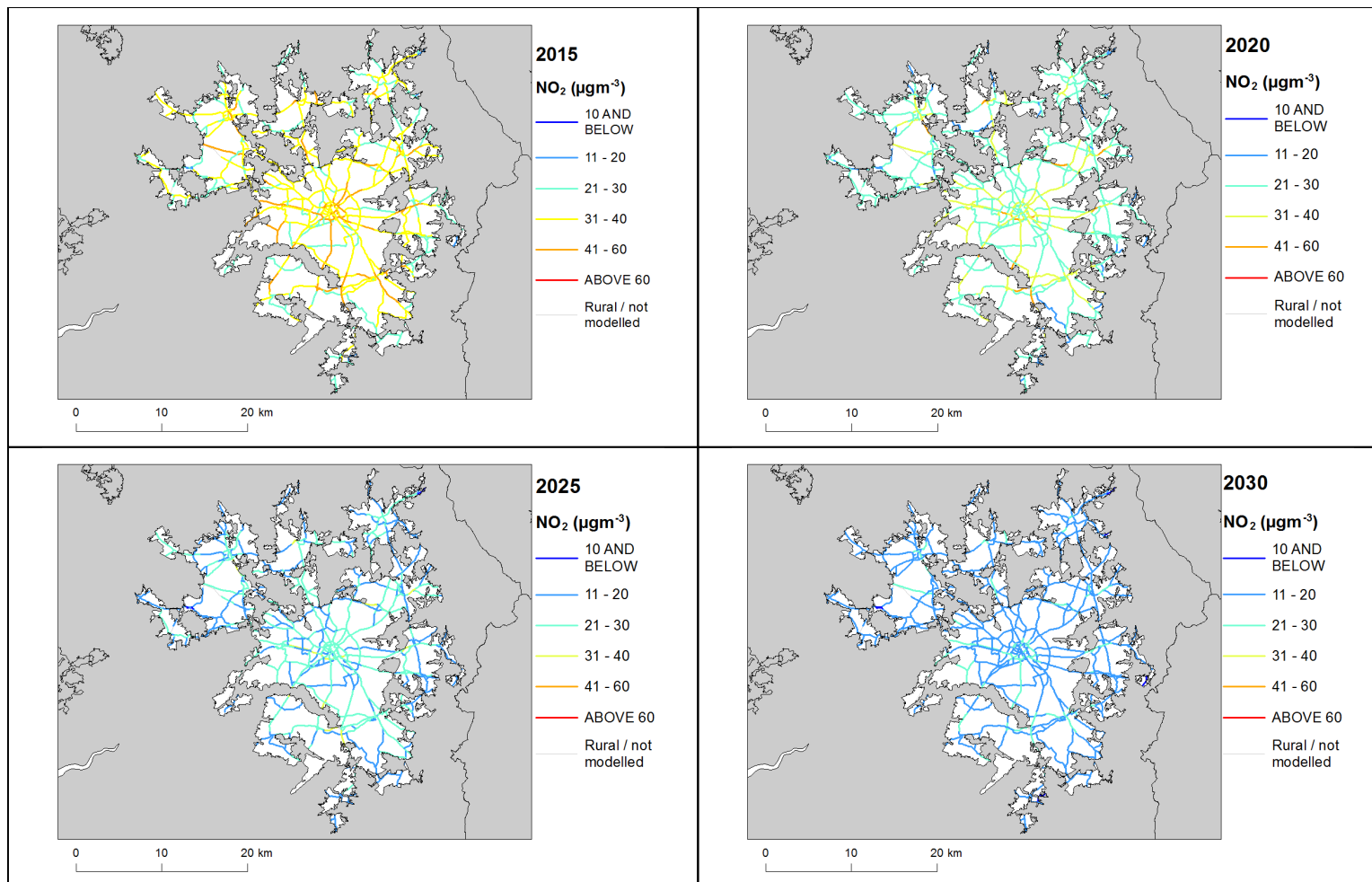


Figure 9: Roadside baseline projections of annual mean NO₂ concentrations in 2020, 2025 and 2030. 2015 is also included here for reference. Modelled exceedances of the annual limit value are shown in orange and red.



Annexes

A References

1st Daughter Directive 1999/30/EC. Council Directive 1999/30/EC, of 22 April 1999 relating to limit values for sulphur dioxide, nitrogen dioxide and oxides of nitrogen, particulate matter and lead in ambient air (The First Daughter Directive). From the Official Journal of the European Communities, 29.6.1999, En Series, L163/41.

Air Quality Directive 2008/50/EC. Council Directive 2008/50/EC, of 21 May 2008. On ambient air quality and cleaner air for Europe. From the Official Journal of the European Union, 11.6.2008, En Series, L152/1

Air Quality Expert Group (AQEG, 2004). Nitrogen Dioxide in the United Kingdom. <http://uk-air.defra.gov.uk/library/aqeg/publications>

CDR Central Data Repository. <http://cdr.eionet.europa.eu/>

Decision 2004/224/EC. Commission Decision of 20 February 2004 laying down arrangements for the submission of information on plans or programmes required under Council Directive 96/62/EC in relation to limit values for certain pollutants in ambient air. From the Official Journal of the European Union, 6.3.2004, En Series, L68/27

Decision 2004/461/EC. Commission Decision of 29 April 2004 laying down a questionnaire to be used for annual reporting on ambient air quality assessment under Council Directives 96/62/EC and 1999/30/EC and under Directives 2000/69/EC and 2002/3/EC of the European Parliament and of the Council. From the Official Journal of the European Union, 30.4.2004, En Series, L156/78

Decision 2011/850/EU. Commission Implementing Decision of 12 December 2011 laying down rules for Directives 2004/107/EC and 2008/50/EC of the European Parliament and of the Council as regards the reciprocal exchange of information and reporting on ambient air quality. From the Official Journal of the European Union, 17.12.2011, En Series, L335/86

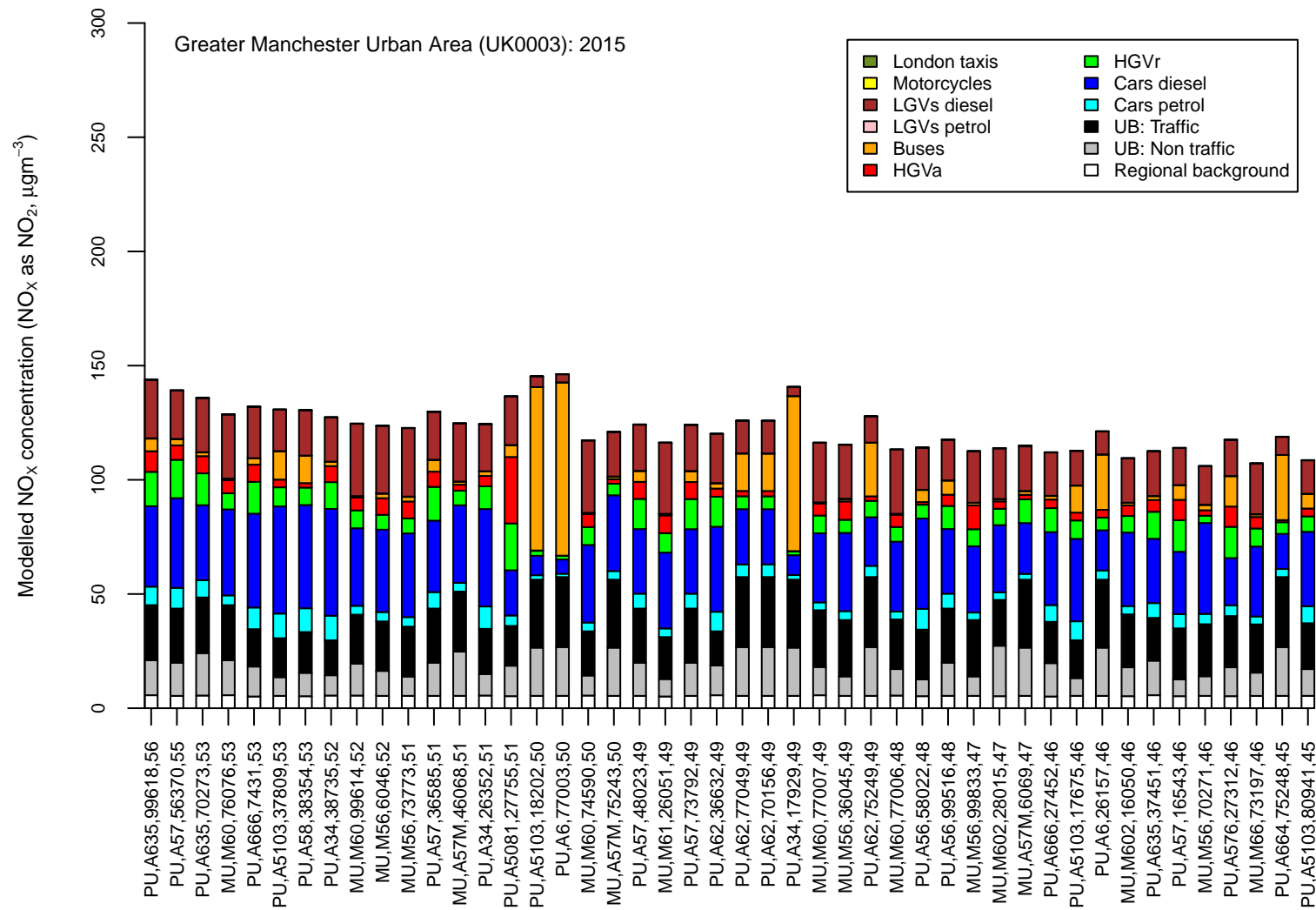
IPR 2013. Guidance on the Commission Implementing Decision laying down rules for Directives 2004/107/EC and 2008/50/EC of the European Parliament and of the Council as regards the reciprocal exchange of information and reporting on ambient air (Decision 2011/850/EU). http://ec.europa.eu/environment/air/quality/legislation/pdf/IPR_guidance1.pdf

UK Air Quality Plan for tackling roadside nitrogen dioxide concentrations and the UK technical report are available at: <http://www.gov.uk/defra>.

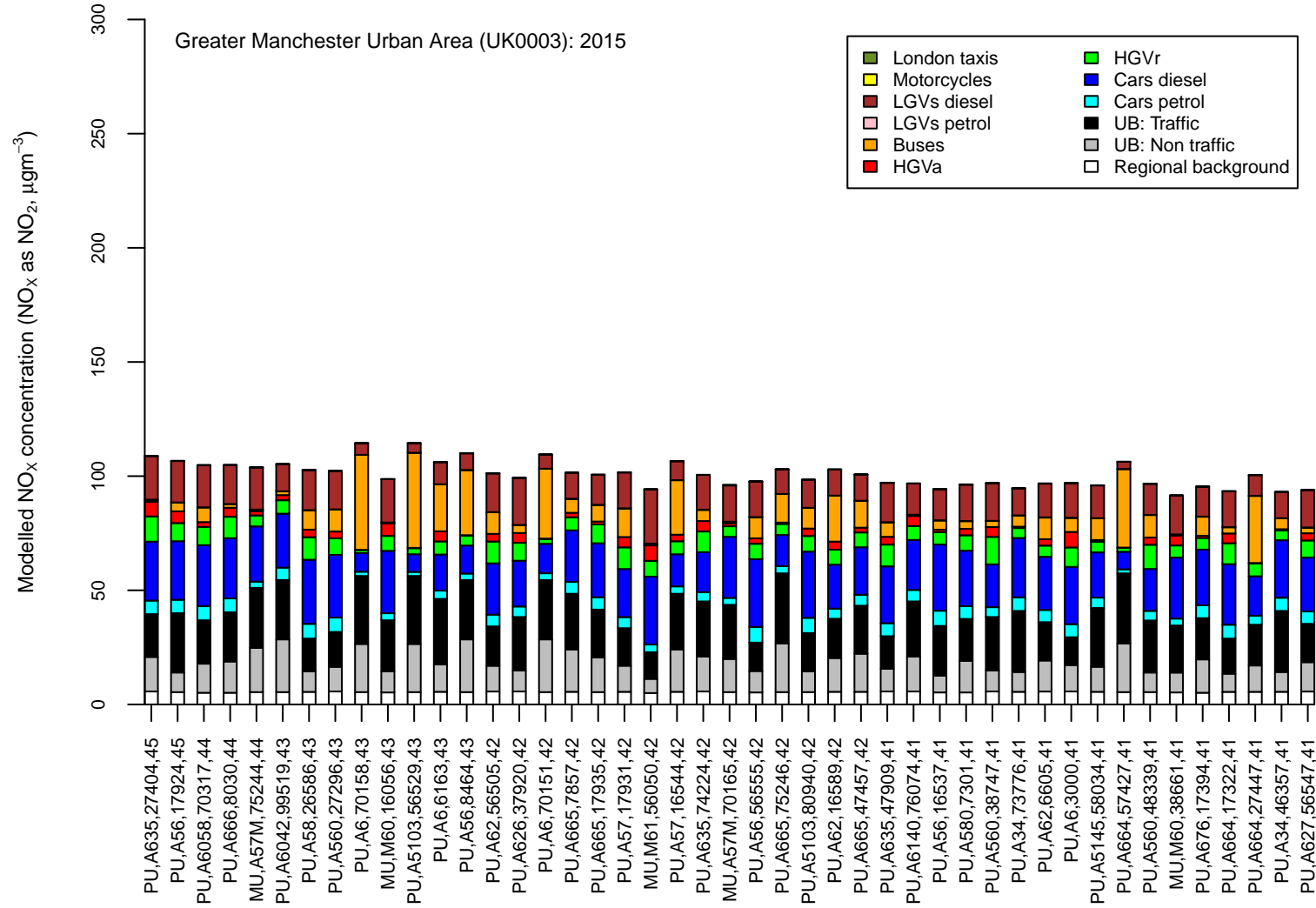
B Source apportionment graphs

Page left blank.

Figure B.1: Annual mean roadside NO_x source apportionment plots for all roads exceeding the annual mean NO₂ limit value in 2015.



Road class (MU = motorway, PU = primary road, TU = trunk road), road number, census id 15 and modelled NO₂ concentration (µgm⁻³)



Road class (MU = motorway, PU = primary road, TU = trunk road), road number, census id 15 and modelled NO₂ concentration (µgm⁻³)

C Tables of measures

Page left blank.

Table C.1 Relevant Local Authority measures within Greater Manchester Urban Area (UK0003)

Measure code	Description	Focus	Classification	Status	Other information
Bolton Metropolitan Borough Council_A9a	Air Quality Monitoring. Produce annual reports and publish results	Public Awareness	Public information and Education: Internet	Implementation	Start date: 2010 Expected end date: 2015 Spatial scale: Whole town or city Source affected: Commercial and residential sources Indicator: Public Awareness Target emissions reduction: N/A
Bolton Metropolitan Borough Council_A9b	Air Quality Info on Website, publish AQ Action Plan on web with links to As sites and include other service info	Public Awareness	Public information and Education: Internet	Implementation	Start date: 2010 Expected end date: 2014 Spatial scale: Whole agglomeration Source affected: Other, please specify Indicator: Public Awareness Target emissions reduction: N/A
Bolton Metropolitan Borough Council_A9c	Review Current Monitoring	N/A	Public information and Education: Other mechanisms	Implementation	Start date: 2011 Expected end date: 2030 Spatial scale: Whole agglomeration Source affected: Other, please specify Indicator: Awareness Target emissions reduction: N/A
Bolton Metropolitan Borough Council_E7a	Pedestrianisation	Exposure	Traffic planning and management: Encouragement of shift of transport modes	Implementation	Start date: 2014 Expected end date: 2030 Spatial scale: Whole town or city Source affected: Transport Indicator: N/A Target emissions reduction: N/A
Bolton Metropolitan Borough Council_E7b	Improved cycling and walking facilities	N/A	Traffic planning and management: Encouragement of shift of transport modes	Implementation	Start date: 2014 Expected end date: 2030 Spatial scale: Whole town or city Source affected: Transport Indicator: N/A Target emissions reduction: N/A
Bolton Metropolitan Borough Council_A3	Taxi Controls Encourage use of LPG and regulation of Taxi emissions	N/A	Other measure: Other measure	Implementation	Start date: 2014 Expected end date: 2030 Spatial scale: Whole town or city Source affected: Transport Indicator: N/A Target emissions reduction: N/A
Bolton Metropolitan Borough Council_E5	Use of Cleaner and alternative fuels. Continuing the fitting of Particle traps as part of the annual replacement program for the Council fleet. Trail alternative	N/A	Other measure: Other measure	Implementation	Start date: 2014 Expected end date: 2030 Spatial scale: Whole town or city Source affected: Transport Indicator: Number of vehicles upgraded Target emissions reduction: N/A

Measure code	Description	Focus	Classification	Status	Other information
Bolton Metropolitan Borough Council_D2	Quality Bus Partnership	Public Transport Emissions	Traffic planning and management: Improvement of public transport	Implementation	Start date: 2014 Expected end date: 2030 Spatial scale: Whole town or city Source affected: Transport Indicator: N/A Target emissions reduction: N/A
Bolton Metropolitan Borough Council_E8a	Travel Plans - BMBC Key areas	N/A	Traffic planning and management: Encouragement of shift of transport modes	Implementation	Start date: 2014 Expected end date: 2030 Spatial scale: Whole town or city Source affected: Transport Indicator: N/A Target emissions reduction: N/A
Bolton Metropolitan Borough Council_E8b	Work in partnership with local businesses to produce travel plans	N/A	Traffic planning and management: Encouragement of shift of transport modes	Implementation	Start date: 2014 Expected end date: 2030 Spatial scale: Whole town or city Source affected: Transport Indicator: N/A Target emissions reduction: N/A
Bolton Metropolitan Borough Council_E8c	Work in partnership with local businesses to produce travel plans	Reducing in Car usage	Traffic planning and management: Encouragement of shift of transport modes	Implementation	Start date: 2014 Expected end date: 2030 Spatial scale: Whole town or city Source affected: Transport Indicator: N/A Target emissions reduction: N/A
Bolton Metropolitan Borough Council_E9	Walk to school plans etc.	Public Awareness	Traffic planning and management: Encouragement of shift of transport modes	Other	Start date: 2011 Expected end date: 2011 Spatial scale: Local Source affected: Other, please specify Indicator: Number of schools with travel plans Target emissions reduction: N/A
Bolton Metropolitan Borough Council_NTA5	Planning	N/A	Traffic planning and management: Other measure	Implementation	Start date: 2014 Expected end date: 2030 Spatial scale: Whole town or city Source affected: Transport Indicator: N/A Target emissions reduction: N/A
Bolton Metropolitan Borough Council_NTA1	Industrial Emissions	Control of industrial emissions	Permit systems and economic instruments: Other measure	Implementation	Start date: 2001 Expected end date: 2030 Spatial scale: National Source affected: Commercial and residential sources Indicator: PM10 / NOX Target emissions reduction: N/A

Measure code	Description	Focus	Classification	Status	Other information
Bolton Metropolitan Borough Council_NTA2a	Domestic smoke emissions publicise and enforce	Public Awareness	Public information and Education: Other mechanisms	Implementation	Start date: 2014 Expected end date: 2016 Spatial scale: Whole town or city Source affected: Commercial and residential sources Indicator: N/A Target emissions reduction: N/A
Bolton Metropolitan Borough Council_NTA2b	Affordable warmth strategy	Domestic Emissions	Other measure: Other measure	Implementation	Start date: 2007 Expected end date: 2016 Spatial scale: National Source affected: Commercial and residential sources Indicator: Number of private sector properties fitted with improved energy efficiency Target emissions reduction: N/A
Bury Metropolitan Borough Council_60	Seek to access grant aid for energy efficiency measures	Energy Efficiency	Other measure: Other measure	Implementation	Start date: 2014 Expected end date: 2030 Spatial scale: Whole town or city Source affected: Commercial and residential sources Indicator: N/A Target emissions reduction: N/A
Bury Metropolitan Borough Council_61	Ensure that the LDF Core Strategy contains positive policies to encourage decentralised, renewable and low carbon, energy networks, reduced energy use and pollution through the design, and construction of new development e.g. in terms of layout, use of materials provision, promotion of CHP in new development etc.	Energy Efficiency and Renewable Energy	Other measure: Other measure	Implementation	Start date: 2014 Expected end date: 2030 Spatial scale: Whole town or city Source affected: Commercial and residential sources Indicator: N/A Target emissions reduction: N/A
Bury Metropolitan Borough Council_62	Support National Initiatives such as European Car Free Day.	Modal Shift	Traffic planning and management: Encouragement of shift of transport modes	Implementation	Start date: 2014 Expected end date: 2030 Spatial scale: Whole town or city Source affected: Transport Indicator: N/A Target emissions reduction: N/A
Bury Metropolitan Borough Council_63	Use the Bury Environment Fair to raise awareness re Air Quality and related issues.	Awareness Raising	Public information and Education: Other mechanisms	Implementation	Start date: 2014 Expected end date: 2030 Spatial scale: Whole town or city Source affected: Transport Indicator: Action will have a positive impact on air quality but this is difficult to assess Target emissions reduction: N/A

Measure code	Description	Focus	Classification	Status	Other information
Bury Metropolitan Borough Council_64	Increase awareness and understanding of Council staff on energy efficiency and implications of car use and beneficial actions they can take.	Energy Efficiency and Modal Shift	Public information and Education: Internet	Implementation	Start date: 2014 Expected end date: 2030 Spatial scale: Whole town or city Source affected: Commercial and residential sources Indicator: N/A Target emissions reduction: N/A
Bury Metropolitan Borough Council_65	Set up an Active Travel Group for Bury Council and local partners	Modal shift	Other measure: Other measure	Implementation	Start date: 2016 Expected end date: 2030 Spatial scale: Whole town or city Source affected: Transport Indicator: N/A Target emissions reduction: N/A
Bury Metropolitan Borough Council_66	Extend existing fleet of 4 electric council vehicles	Modal shift	Public procurement: Other measure	Implementation	Start date: 2016 Expected end date: 2030 Spatial scale: Whole town or city Source affected: Transport Indicator: N/A Target emissions reduction: N/A
Bury Metropolitan Borough Council_67	Investigate solar PV and battery storage at Bradley Fold depot to provide renewable EV charging facilities	Modal shift	Public procurement: Other measure	Business case	Start date: 2016 Expected end date: 2020 Spatial scale: Whole town or city Source affected: Transport Indicator: N/A Target emissions reduction: N/A
Bury Metropolitan Borough Council_1	Promote the use of alternative fuels such as LPG, CNG and electricity to domestic and commercial vehicle users.	Low emissions vehicles	Public procurement: Other measure	Implementation	Start date: 2004 Expected end date: 2030 Spatial scale: Whole agglomeration Source affected: Transport Indicator: N/A Target emissions reduction: N/A
Bury Metropolitan Borough Council_2	Investigate the implementation of lower speed limits where appropriate and work with Greater Manchester Police to increase enforcement of speed limits	Reduce vehicle emissions	Traffic planning and management: Reduction of speed limits and control	Implementation	Start date: 2004 Expected end date: 2030 Spatial scale: Whole town or city Source affected: Transport Indicator: N/A Target emissions reduction: N/A
Bury Metropolitan Borough Council_3	Support the Highways Agency's (HA) Route Management Strategies (RMS) for the M60 and M66	Reduce vehicle emissions	Traffic planning and management: Other measure	Implementation	Start date: 2013 Expected end date: 2030 Spatial scale: Whole agglomeration Source affected: Transport Indicator: N/A Target emissions reduction: N/A
Bury Metropolitan Borough Council_4	Improve road signing in the Borough to reduce unnecessary travel.	Reduce vehicle emissions	Traffic planning and management: Other measure	Implementation	Start date: 2004 Expected end date: 2030 Spatial scale: Whole town or city Source affected: Transport Indicator: N/A Target emissions reduction: N/A

Measure code	Description	Focus	Classification	Status	Other information
Bury Metropolitan Borough Council_5	Monitor the current five vehicles fitted with diesel/LPG systems prior to fitting of further systems.	Reduce vehicle emissions	Other measure: Other measure	Implementation	Start date: 2010 Expected end date: 2030 Spatial scale: Whole town or city Source affected: Transport Indicator: N/A Target emissions reduction: N/A
Bury Metropolitan Borough Council_6	Specification and purchase of improved efficiency vehicles to and above Euro IV standard and examine the availability of Euro V engines.	Reduce vehicle emissions	Other measure: Other measure	Implementation	Start date: 2004 Expected end date: 2030 Spatial scale: Whole town or city Source affected: Transport Indicator: Target emissions reduction: N/A
Bury Metropolitan Borough Council_7	Improve monitoring of fuel consumption to facilitate reduction programme.	Reduce vehicle emissions	Other measure: Other measure	Implementation	Start date: 2004 Expected end date: 2030 Spatial scale: Whole town or city Source affected: Transport Indicator: N/A Target emissions reduction: N/A
Bury Metropolitan Borough Council_8	Ensure that the Council's vehicle fleet is properly maintained and operating efficiently	Reduce vehicle emissions	Other measure: Other measure	Implementation	Start date: 2004 Expected end date: 2030 Spatial scale: Whole town or city Source affected: Transport Indicator: N/A Target emissions reduction: N/A
Bury Metropolitan Borough Council_9	Raise awareness of fuel-efficient driving amongst local authority drivers and employees generally.	Reduce vehicle emissions	Other measure: Other measure	Implementation	Start date: 2004 Expected end date: 2030 Spatial scale: Whole town or city Source affected: Transport Indicator: N/A Target emissions reduction: N/A
Bury Metropolitan Borough Council_10	Improving the provision of on and off road cycle lanes and tracks in the Borough.	Modal shift	Traffic planning and management: Encouragement of shift of transport modes	Implementation	Start date: 2004 Expected end date: 2030 Spatial scale: Whole town or city Source affected: Transport Indicator: N/A Target emissions reduction: N/A
Bury Metropolitan Borough Council_11	Review the Bury Cycling Strategy and raise awareness of it.	Modal shift	Traffic planning and management: Encouragement of shift of transport modes	Implementation	Start date: 2004 Expected end date: 2030 Spatial scale: Whole town or city Source affected: Transport Indicator: N/A Target emissions reduction: N/A
Bury Metropolitan Borough Council_12	Providing advanced stop lines for cycles.	Modal shift	Traffic planning and management: Encouragement of shift of transport modes	Implementation	Start date: 2004 Expected end date: 2030 Spatial scale: Whole town or city Source affected: Transport Indicator: N/A Target emissions reduction: N/A

Measure code	Description	Focus	Classification	Status	Other information
Bury Metropolitan Borough Council_13	Improve the provision and security of cycle parking facilities.	Modal shift	Traffic planning and management: Encouragement of shift of transport modes	Implementation	Start date: 2004 Expected end date: 2030 Spatial scale: Whole town or city Source affected: Transport Indicator: N/A Target emissions reduction: N/A
Bury Metropolitan Borough Council_14	Implement the Safer Routes to Schools Programmes.	Modal shift	Traffic planning and management: Encouragement of shift of transport modes	Implementation	Start date: 2004 Expected end date: 2030 Spatial scale: Whole town or city Source affected: Transport Indicator: N/A Target emissions reduction: N/A
Bury Metropolitan Borough Council_15	Rolling programme of local schemes to improve the safety of pedestrians.	Modal shift	Traffic planning and management: Encouragement of shift of transport modes	Implementation	Start date: 2004 Expected end date: 2030 Spatial scale: Whole town or city Source affected: Transport Indicator: N/A Target emissions reduction: N/A
Bury Metropolitan Borough Council_16	Where appropriate, ensure that the impact of proposed developments on traffic emissions is assessed as part of the planning process.	Development control	Traffic planning and management: Other measure	Implementation	Start date: 2004 Expected end date: 2030 Spatial scale: Whole town or city Source affected: Transport Indicator: N/A Target emissions reduction: N/A
Bury Metropolitan Borough Council_17	Where appropriate request that developers produce a statement on cycle/ pedestrian impact with planning applications.	Development control	Traffic planning and management: Encouragement of shift of transport modes	Implementation	Start date: 2004 Expected end date: 2030 Spatial scale: Whole town or city Source affected: Transport Indicator: N/A Target emissions reduction: N/A
Bury Metropolitan Borough Council_18	Ensure that the revised Local Development Framework seeks to reduce the need to travel and promotes the use of modes other than the car.	Development control	Traffic planning and management: Encouragement of shift of transport modes	Implementation	Start date: 2004 Expected end date: 2030 Spatial scale: Whole town or city Source affected: Transport Indicator: N/A Target emissions reduction: N/A
Bury Metropolitan Borough Council_19	Implement the Bury sections of the National Cycle Network route through Bury.	Modal shift	Traffic planning and management: Encouragement of shift of transport modes	Implementation	Start date: 2004 Expected end date: 2012 Spatial scale: Whole town or city Source affected: Transport Indicator: N/A Target emissions reduction: N/A
Bury Metropolitan Borough Council_20	Produce a Bury Walking Strategy promoting walking in the Borough.	Modal shift	Traffic planning and management: Encouragement of shift of transport modes	Implementation	Start date: 2003 Expected end date: 2004 Spatial scale: Whole town or city Source affected: Transport Indicator: N/A Target emissions reduction: N/A

Measure code	Description	Focus	Classification	Status	Other information
Bury Metropolitan Borough Council_21	Redesign road systems where appropriate to give pedestrians priority e.g. in Bury Town Centre.	Modal shift	Traffic planning and management: Encouragement of shift of transport modes	Implementation	Start date: 2004 Expected end date: 2030 Spatial scale: Whole town or city Source affected: Transport Indicator: N/A Target emissions reduction: N/A
Bury Metropolitan Borough Council_22	Promote the implementation of Travel Plans among Bury employers.	Modal shift	Traffic planning and management: Encouragement of shift of transport modes	Implementation	Start date: 2004 Expected end date: 2030 Spatial scale: Whole town or city Source affected: Transport Indicator: N/A Target emissions reduction: N/A
Bury Metropolitan Borough Council_23	Promote measures such as car sharing among residents and businesses in the area.	Reduce vehicle emissions	Traffic planning and management: Encouragement of shift of transport modes	Implementation	Start date: 2004 Expected end date: 2030 Spatial scale: Whole agglomeration Source affected: Transport Indicator: N/A Target emissions reduction: N/A
Bury Metropolitan Borough Council_24	Implement the Home Zone at Victoria Estate Whitefield. Implement additional Home Zones wherever feasible and appropriate levels of funding available.	Reduce vehicle emissions	Traffic planning and management: Reduction of speed limits and control	Implementation	Start date: 2004 Expected end date: 2005 Spatial scale: Local Source affected: Transport Indicator: N/A Target emissions reduction: N/A
Bury Metropolitan Borough Council_25	Implement the A56/A665/A58 Bus Corridors.	Modal shift	Traffic planning and management: Encouragement of shift of transport modes	Implementation	Start date: 2003 Expected end date: 2008 Spatial scale: Whole agglomeration Source affected: Transport Indicator: N/A Target emissions reduction: N/A
Bury Metropolitan Borough Council_26	Promote clean attractive, safe and affordable public transport.	Modal shift	Other measure: Other measure	Implementation	Start date: 2004 Expected end date: 2030 Spatial scale: Whole town or city Source affected: Transport Indicator: N/A Target emissions reduction: N/A
Bury Metropolitan Borough Council_27	Promote an integrated public transport system.	Modal shift	Other measure: Other measure	Implementation	Start date: 2004 Expected end date: 2030 Spatial scale: Whole agglomeration Source affected: Transport Indicator: N/A Target emissions reduction: N/A
Bury Metropolitan Borough Council_28	Manage public parking to encourage the use of public transport rather than the car.	Modal shift	Other measure: Other measure	Implementation	Start date: 2004 Expected end date: 2030 Spatial scale: Whole town or city Source affected: Transport Indicator: N/A Target emissions reduction: N/A

Measure code	Description	Focus	Classification	Status	Other information
Bury Metropolitan Borough Council_29	Assess current provision of public transport and community needs and work with TfGM to provide an accessible and suitable service.	Modal shift	Other measure: Other measure	Implementation	Start date: 2004 Expected end date: 2030 Spatial scale: Whole town or city Source affected: Transport Indicator: N/A Target emissions reduction: N/A
Bury Metropolitan Borough Council_30	Support the provision of increased security at Park and Ride car parks.	Modal shift	Traffic planning and management: Improvement of public transport	Implementation	Start date: 2004 Expected end date: 2030 Spatial scale: Whole agglomeration Source affected: Transport Indicator: N/A Target emissions reduction: N/A
Bury Metropolitan Borough Council_31	Examine the feasibility of introducing a commuter service on the East Lancashire Railway from Rawtenstall to Bury and beyond	Modal shift	Other measure: Other measure	Implementation	Start date: 2004 Expected end date: 2030 Spatial scale: Whole town or city Source affected: Transport Indicator: N/A Target emissions reduction: N/A
Bury Metropolitan Borough Council_32	Support provision of a new Park and Ride Scheme adjacent to Bury town centre	Modal shift	Traffic planning and management: Improvement of public transport	Implementation	Start date: 2004 Expected end date: 2030 Spatial scale: Whole agglomeration Source affected: Transport Indicator: N/A Target emissions reduction: N/A
Bury Metropolitan Borough Council_33	Implement a Travel Plan for Bury Council.	Modal shift	Traffic planning and management: Encouragement of shift of transport modes	Implementation	Start date: 2004 Expected end date: 2030 Spatial scale: Whole town or city Source affected: Transport Indicator: N/A Target emissions reduction: N/A
Bury Metropolitan Borough Council_34	Investigate the feasibility of including a consideration of transport emissions and energy efficiency for insertion into any environmental quality criteria that the authority may wish to introduce.	Reduce vehicle emissions	Traffic planning and management: Freight transport measure	Implementation	Start date: 2004 Expected end date: 2030 Spatial scale: Whole agglomeration Source affected: Transport Indicator: N/A Target emissions reduction: N/A
Bury Metropolitan Borough Council_35	Investigate the feasibility of co-ordinating the supply of goods and services on a corporate basis to reduce the number of delivery journeys necessary.	Reduce vehicle emissions	Traffic planning and management: Freight transport measure	Implementation	Start date: 2004 Expected end date: 2030 Spatial scale: Whole agglomeration Source affected: Transport Indicator: N/A Target emissions reduction: N/A
Bury Metropolitan Borough Council_36	Promote improved energy efficiency in the industrial and commercial sector by continuing to support the work of the Groundwork Business Environment Association Bury.	Energy Efficiency	Other measure: Other measure	Implementation	Start date: 2004 Expected end date: 2030 Spatial scale: Whole town or city Source affected: Commercial and residential sources Indicator: N/A Target emissions reduction: N/A

Measure code	Description	Focus	Classification	Status	Other information
Bury Metropolitan Borough Council_38	Continue installing energy efficiency measures in public sector housing stock	Energy Efficiency	Public procurement: Low emission stationary combustion sources	Implementation	Start date: 2004 Expected end date: 2030 Spatial scale: Whole town or city Source affected: Commercial and residential sources Indicator: N/A Target emissions reduction: N/A
Bury Metropolitan Borough Council_52	Ongoing capital programme of boiler replacements and upgrading of heating controls	Energy Efficiency	Other measure: Other measure	Implementation	Start date: 2014 Expected end date: 2030 Spatial scale: Whole town or city Source affected: Commercial and residential sources Indicator: N/A Target emissions reduction: N/A
Bury Metropolitan Borough Council_53	Investigate the feasibility of installing a solar water-heating panel to heat hot water in one of the Council's administrative buildings	Renewable Energy	Other measure: Other measure	Implementation	Start date: 2014 Expected end date: 2030 Spatial scale: Whole town or city Source affected: Commercial and residential sources Indicator: N/A Target emissions reduction: N/A
Bury Metropolitan Borough Council_54	Set and publish Council targets and performance in relation to energy reductions	Energy Efficiency	Other measure: Other measure	Implementation	Start date: 2014 Expected end date: 2030 Spatial scale: Whole town or city Source affected: Commercial and residential sources Indicator: N/A Target emissions reduction: N/A
Bury Metropolitan Borough Council_55	Implement Combined Heat and Power wherever appropriate and economically feasible	Energy Efficiency	Other measure: Other measure	Implementation	Start date: 2014 Expected end date: 2030 Spatial scale: Local Source affected: Commercial and residential sources Indicator: N/A Target emissions reduction: N/A
Bury Metropolitan Borough Council_56	Audit corporate buildings and develop a programme of improvements prioritising the least efficient buildings	Energy Efficiency	Other measure: Other measure	Implementation	Start date: 2014 Expected end date: 2030 Spatial scale: Whole town or city Source affected: Commercial and residential sources Indicator: N/A Target emissions reduction: N/A
Bury Metropolitan Borough Council_57	Carry out/ promote basic energy efficiency work (e.g. draught-proofing and other insulation measures)	Energy Efficiency	Other measure: Other measure	Implementation	Start date: 2014 Expected end date: 2030 Spatial scale: Whole town or city Source affected: Commercial and residential sources Indicator: N/A Target emissions reduction: N/A

Measure code	Description	Focus	Classification	Status	Other information
Bury Metropolitan Borough Council_58	Continue to offer financial loans for energy conservation measures	Energy Efficiency	Other measure: Other measure	Implementation	Start date: 2014 Expected end date: 2030 Spatial scale: Whole town or city Source affected: Commercial and residential sources Indicator: N/A Target emissions reduction: N/A
Bury Metropolitan Borough Council_59	Consider making an officer within each Council building responsible for monitoring fuel use, raising awareness and seeking to make improvement	Energy Efficiency	Other measure: Other measure	Implementation	Start date: 2014 Expected end date: 2030 Spatial scale: Whole town or city Source affected: Commercial and residential sources Indicator: N/A Target emissions reduction: N/A
Cheshire East_AQM4	Develop and implement an Air Quality Strategy	Strategy	Other measure: Other measure	Implementation	Start date: 2011 Expected end date: 2015 Spatial scale: Local Source affected: Other, please specify Indicator: Publication Target emissions reduction: N/A
Cheshire East_AQM5	Update Local Emissions Inventory	Data	Other measure: Other measure	Implementation	Start date: 2013 Expected end date: 2013 Spatial scale: Local Source affected: Other, please specify Indicator: EI Updated Target emissions reduction: N/A
Cheshire East_AQM8	Newsletter to EPR Processes	EPR	Permit systems and economic instruments: Other measure	Implementation	Start date: 2008 Expected end date: 2020 Spatial scale: Local Source affected: Industry including heat and power production Indicator: Newsletter produced x2 annually Target emissions reduction: N/A
Cheshire East_AQM9	Work with partner agencies	Partnership working	Traffic planning and management: Encouragement of shift of transport modes	Implementation	Start date: 2008 Expected end date: 2030 Spatial scale: Local Source affected: Transport Indicator: Identification of site specific initiatives Target emissions reduction: N/A
Cheshire East_AQM10	Establish steering group	Internal cohesive working	Traffic planning and management: Encouragement of shift of transport modes	Implementation	Start date: 2012 Expected end date: 2025 Spatial scale: Local Source affected: Transport Indicator: 2 meetings per year Target emissions reduction: N/A

Measure code	Description	Focus	Classification	Status	Other information
Cheshire East_AR1	Developer Guidance	Development Control	Other measure: Other measure	Implementation	Start date: 2011 Expected end date: 2030 Spatial scale: Local Source affected: Other, please specify Indicator: Guidance produced Target emissions reduction: N/A
Cheshire East_AR2	Website	Public	Public information and Education: Internet	Implementation	Start date: 2010 Expected end date: 2030 Spatial scale: Local Source affected: Other, please specify Indicator: Website up to date Target emissions reduction: N/A
Cheshire East_AR3	Schools education pack	Schools	Public information and Education: Other mechanisms	Implementation	Start date: 2011 Expected end date: 2015 Spatial scale: Local Source affected: Transport Indicator: Education pack produced Target emissions reduction: N/A
Cheshire East_TR1	Undertake travel planning support	Development Control	Traffic planning and management: Other measure	Implementation	Start date: 2010 Expected end date: 2030 Spatial scale: Local Source affected: Transport Indicator: No. Travel plans implemented Target emissions reduction: N/A
Cheshire East_TR5	Improve public transport	Sustainable Transport	Other measure: Other measure	Implementation	Start date: 2010 Expected end date: 2030 Spatial scale: Local Source affected: Transport Indicator: Implementation of Passenger Transport Strategy Target emissions reduction: N/A
Cheshire East_TR9	Ensure Taxi's comply with emission limits and consider EURO standards for fleet	Taxi's	Permit systems and economic instruments: Introduction/increase of environment taxes	Preparation	Start date: 2015 Expected end date: 2020 Spatial scale: Local Source affected: Transport Indicator: Taxi Licensing Strategy Review Target emissions reduction: N/A
Cheshire East_TR10	Work to coordinate roadworks on the network	Congestion reduction	Traffic planning and management: Other measure	Implementation	Start date: 2010 Expected end date: 2030 Spatial scale: Local Source affected: Transport Indicator: Network Management Plan Target emissions reduction: N/A

Measure code	Description	Focus	Classification	Status	Other information
Cheshire East_TRF1	Freight operator efficiency	Freight emissions	Traffic planning and management: Freight transport measure	Planning	Start date: 2010 Expected end date: 2020 Spatial scale: Local Source affected: Transport Indicator: Freight Strategy Implementation Target emissions reduction: N/A
Cheshire East_CEC1	Council travel plan and car share scheme	Own emissions	Traffic planning and management: Encouragement of shift of transport modes	Implementation	Start date: 2010 Expected end date: 2030 Spatial scale: Local Source affected: Transport Indicator: Staff travel plan Target emissions reduction: N/A
Cheshire East_CEC2	Introduce E-Government reducing the need for people to travel	Public	Traffic planning and management: Encouragement of shift of transport modes	Implementation	Start date: 2010 Expected end date: 2030 Spatial scale: Local Source affected: Transport Indicator: Customer First programmes Target emissions reduction: N/A
Cheshire East_DC1	Ensure AQ has recognition in all Council Strategies	Air Quality	Other measure: Other measure	Implementation	Start date: 2011 Expected end date: 2030 Spatial scale: Local Source affected: Transport Indicator: Links to strategic documents Target emissions reduction: N/A
Cheshire East_DC6	Develop Low Emission Strategy	Emissions	Other measure: Other measure	Planning	Start date: 2011 Expected end date: 2025 Spatial scale: Local Source affected: Transport Indicator: Implementation of LES Target emissions reduction: N/A
Cheshire East_WR1/RH1/LH1/	Congleton Bypass	Transport	Traffic planning and management: Encouragement of shift of transport modes	Planning	Start date: 2014 Expected end date: 2024 Spatial scale: Whole town or city Source affected: Transport Indicator: Bypass built Target emissions reduction: YES
Cheshire East_WR3/RH2/NANT14/LH4/SAND4	Study effectiveness of NO2 busting coatings	Innovative solutions	Other measure: Other measure	Implementation	Start date: 2008 Expected end date: 2016 Spatial scale: Whole town or city Source affected: Transport Indicator: Study completed Target emissions reduction: YES

Measure code	Description	Focus	Classification	Status	Other information
Cheshire East_WR5/RH5/NANT3/LH5	Parking Enforcement	Air Quality	Traffic planning and management: Other measure	Implementation	Start date: 2009 Expected end date: 2020 Spatial scale: Whole town or city Source affected: Transport Indicator: No. FPN issues in / near AQMA Target emissions reduction: YES
Cheshire East_WR8/RH7/LH8	LEZ for Congleton	Air Quality	Traffic planning and management: Low emission zones	Implementation	Start date: 2024 Expected end date: 2030 Spatial scale: Whole town or city Source affected: Transport Indicator: LEZ implemented Target emissions reduction: YES
Cheshire East_RH6	Junction improvement Rood Hill AQMA	Congestion reduction	Traffic planning and management: Encouragement of shift of transport modes	Implementation	Start date: 2020 Expected end date: 2023 Spatial scale: Local Source affected: Transport Indicator: Works completed Target emissions reduction: YES
Cheshire East_NANT1	Resigning of town	Air Quality	Traffic planning and management: Encouragement of shift of transport modes	Evaluation	Start date: 2010 Expected end date: 2011 Spatial scale: Whole town or city Source affected: Transport Indicator: Project completed Target emissions reduction: YES
Cheshire East_NANT4	Deliveries in Nantwich	Air Quality	Traffic planning and management: Freight transport measure	Evaluation	Start date: 2011 Expected end date: 2013 Spatial scale: Whole town or city Source affected: Transport Indicator: Project Completed Target emissions reduction: YES
Cheshire East_NANT10	UTC Traffic Management System	Air Quality	Traffic planning and management: Other measure	Preparation	Start date: 2018 Expected end date: 2020 Spatial scale: Whole town or city Source affected: Transport Indicator: UTC Introduced Target emissions reduction: YES
Cheshire East_NANT11	Contact Sat-Nav companies updating maps for Nantwich	Air Quality	Traffic planning and management: Other measure	Evaluation	Start date: 2013 Expected end date: 2013 Spatial scale: Local Source affected: Transport Indicator: Completed Target emissions reduction: N/A
Cheshire East_NANT15	Cycleway Crewe to Nantwich	Air Quality	Traffic planning and management: Expansion of bicycle and pedestrian infrastructure	Evaluation	Start date: 2013 Expected end date: 2014 Spatial scale: Local Source affected: Transport Indicator: Completed Target emissions reduction: N/A

Measure code	Description	Focus	Classification	Status	Other information
Cheshire East_NANT22	Junction changes in AQMA	Air Quality	Traffic planning and management: Encouragement of shift of transport modes	Planning	Start date: 2018 Expected end date: 2020 Spatial scale: Local Source affected: Transport Indicator: Junction changed Target emissions reduction: YES
Cheshire East_NANT23	Keep Clear sign to allow flowing traffic	Congestion reduction	Traffic planning and management: Other measure	Evaluation	Start date: 2013 Expected end date: 2013 Spatial scale: Local Source affected: Transport Indicator: Sign completed Target emissions reduction: YES
Cheshire East_SAND3	Junction improvements at M6 J17	N/A	Traffic planning and management: Encouragement of shift of transport modes	Implementation	Start date: 2015 Expected end date: 2015 Spatial scale: Local Source affected: Transport Indicator: Completed Target emissions reduction: YES
Cheshire East_MERE1	A556 Bypass	Transport	Traffic planning and management: Encouragement of shift of transport modes	Implementation	Start date: 2015 Expected end date: 2017 Spatial scale: Local Source affected: Transport Indicator: Bypass completed Target emissions reduction: YES
Cheshire East_MERE5	Signal / Junction improvements to A556	Congestion reduction	Traffic planning and management: Encouragement of shift of transport modes	Evaluation	Start date: 2009 Expected end date: 2015 Spatial scale: Local Source affected: Transport Indicator: Completed Target emissions reduction: YES
Cheshire East_DIS1	A6 / SEMMMS SCHEME / A6 Managed Route	Congestion reduction	Traffic planning and management: Other measure	Implementation	Start date: 2014 Expected end date: 2025 Spatial scale: Whole town or city Source affected: Transport Indicator: Works completed Target emissions reduction: YES
Cheshire East_KNU1	Junction improvements near AQMA	Congestion reduction	Traffic planning and management: Encouragement of shift of transport modes	Implementation	Start date: 2016 Expected end date: 2017 Spatial scale: Whole town or city Source affected: Transport Indicator: Works completed Target emissions reduction: YES
Cheshire East_CRE1	Crewe Green Link Road	Congestion reduction	Traffic planning and management: Encouragement of shift of transport modes	Implementation	Start date: 2014 Expected end date: 2016 Spatial scale: Whole town or city Source affected: Transport Indicator: Road Built Target emissions reduction: YES

Measure code	Description	Focus	Classification	Status	Other information
Cheshire East_CRE4	Box junction enforcement	Congestion reduction	Traffic planning and management: Other measure	Implementation	Start date: 2014 Expected end date: 2016 Spatial scale: Local Source affected: Transport Indicator: No. Tickets Issued Target emissions reduction: N/A
Cheshire East_CRE3	Relocate Crewe Railway Station	Congestion reduction	Traffic planning and management: Other measure	Implementation	Start date: 2013 Expected end date: 2020 Spatial scale: Local Source affected: Transport Indicator: Station relocated Target emissions reduction: YES
Cheshire East_MISC1	Introduction of Electric Vehicle Charging Infrastructure	Low Emission Transport	Public procurement: Other measure	Planning	Start date: 2014 Expected end date: 2015 Spatial scale: Whole agglomeration Source affected: Transport Indicator: Project completed Target emissions reduction: N/A
Cheshire East_MISC2	Workplace Electric Vehicles	Low Emission Transport	Public procurement: Other measure	Planning	Start date: 2014 Expected end date: 2015 Spatial scale: Local Source affected: Transport Indicator: Project completed Target emissions reduction: N/A
Cheshire East_MISC3	Sustainable Travel Campaign in Congleton	Low Emission Transport	Traffic planning and management: Encouragement of shift of transport modes	Preparation	Start date: 2015 Expected end date: 2016 Spatial scale: Whole town or city Source affected: Transport Indicator: Project completed Target emissions reduction: N/A
Cheshire East_MISC4	Congleton Link Road	Congestion reduction and improvement in AQ in AQMA's	Traffic planning and management: Encouragement of shift of transport modes	Preparation	Start date: 2015 Expected end date: 2018 Spatial scale: Whole town or city Source affected: Transport Indicator: Project completed Target emissions reduction: YES
Cheshire East_LTP/ROWIP 2014/15	Active Travel Capital Investment	Walking and Cycling Infrastructure	Traffic planning and management: Encouragement of shift of transport modes	Implementation	Start date: 2014 Expected end date: 2015 Spatial scale: Whole agglomeration Source affected: Transport Indicator: Installation of infrastructure Target emissions reduction: N/A
Cheshire East_LTP/ROWIP 2015/16	Active Travel Capital Investment	Walking and Cycling Infrastructure	Traffic planning and management: Encouragement of shift of transport modes	Preparation	Start date: 2015 Expected end date: 2016 Spatial scale: Whole agglomeration Source affected: Transport Indicator: Installation of infrastructure Target emissions reduction: N/A

Measure code	Description	Focus	Classification	Status	Other information
Manchester City Council_E13	City Car Club	Promotion of Car Club	Other measure: Other measure	Implementation	Start date: 2006 Expected end date: 2030 Spatial scale: Whole town or city Source affected: Transport Indicator: Reduction in car journeys Target emissions reduction: N/A
Manchester City Council_NTA4_1	Planning Policies	Development of policies and supplementary guidance on reducing environmental impact for new developments to reduce emissions.	Other measure: Other measure	Implementation	Start date: 2012 Expected end date: 2030 Spatial scale: Whole town or city Source affected: Transport Indicator: Reduction in car journeys Target emissions reduction: N/A
Manchester City Council_NTA4_2	City Council 'Green' energy policy	Renewable electricity generation	Other measure: Other measure	Implementation	Start date: 2004 Expected end date: 2030 Spatial scale: Local Source affected: Other, please specify Indicator: CO2 reduction Target emissions reduction: N/A
Manchester City Council_E9	Eco-Schools	Eco-Schools is an international award programme that guides schools on their sustainable journey, providing a framework to help embed these principles into the heart of school life and has nine themes, including Transport and Energy.	Traffic planning and management: Encouragement of shift of transport modes	Implementation	Start date: 2014 Expected end date: 2030 Spatial scale: Whole town or city Source affected: Transport Indicator: Reduction in car journeys Target emissions reduction: N/A
Manchester City Council_A	Fleet vehicles	Reduce the CO2 emissions from Manchester City Council fleet vehicles	Other measure: Other measure	Implementation	Start date: 2014 Expected end date: 2014 Spatial scale: Local Source affected: Transport Indicator: Reduction in vehicle emissions Target emissions reduction: N/A
Manchester City Council_E15 and E8	Airport ground travel emissions reduction schemes	Construction of a ground transport interchange . Ongoing implementation and promotion of staff travel plan . Construction of a third rail platform	Traffic planning and management: Improvement of public transport	Implementation	Start date: 1997 Expected end date: 2030 Spatial scale: Local Source affected: Transport Indicator: Reduction in car journeys Target emissions reduction: N/A
Manchester City Council_E16	Street lighting	Street lighting installations and associated lighting levels to comply with British Standard recommendations, to encourage pedestrian activity within the night time environment and thus encourage the use of public transport.	Other measure: Other measure	Implementation	Start date: 2004 Expected end date: 2030 Spatial scale: Whole town or city Source affected: Transport Indicator: Increase in public transport use Target emissions reduction: N/A

Measure code	Description	Focus	Classification	Status	Other information
Manchester City Council_E4	Low emission taxi scheme	Low emission taxi scheme by implementing age limits on vehicles through the Council's Licensing Unit.	Permit systems and economic instruments: Introduction/increase of environment taxes	Implementation	Start date: 2007 Expected end date: 2030 Spatial scale: Whole town or city Source affected: Transport Indicator: Reduction in vehicle emissions Target emissions reduction: N/A
Manchester City Council_E3	Tree Planting	Tree planting will help to ameliorate air quality issues	Other measure: Other measure	Implementation	Start date: 1995 Expected end date: 2030 Spatial scale: Local Source affected: Other, please specify Indicator: Reduction in air pollutants Target emissions reduction: N/A
Manchester City Council_NTA4_3	Dirty Diesel Campaign	Encouraging the public to report smoky, grossly polluting vehicles.	Public information and Education: Internet	Implementation	Start date: 2004 Expected end date: 2030 Spatial scale: Whole town or city Source affected: Transport Indicator: Reduction in vehicle emissions Target emissions reduction: N/A
Manchester City Council_NTA1	Environmental Permitting	Regulation of industrial processes under the Environmental Permitting Programme to control emissions to air including particulates, heavy metals and hydrocarbons.	Permit systems and economic instruments: Other measure	Implementation	Start date: 2014 Expected end date: 2030 Spatial scale: Whole town or city Source affected: Industry including heat and power production Indicator: Reduction in point source emissions Target emissions reduction: N/A
Manchester City Council_E5 and A8	Solar panels & Electric vehicle	Project to use an electric vehicle for MCC staff and make the vehicle effectively 'emission free' by offsetting emissions produced from the charging of the vehicle using solar power.	Public procurement: Other measure	Implementation	Start date: 2008 Expected end date: 2008 Spatial scale: Local Source affected: Transport Indicator: Reduction in vehicle emissions Target emissions reduction: N/A
Manchester City Council_CP1	Bus Codes of Conduct	Development of Bus Codes of Conduct to raise environmental performance of bus industry	Public procurement: Cleaner vehicle transport services	Implementation	Start date: 2010 Expected end date: 2017 Spatial scale: Local Source affected: Transport Indicator: Reduction in vehicle emissions Target emissions reduction: N/A

Measure code	Description	Focus	Classification	Status	Other information
Manchester City Council_E15	Transport Policies	City Council Transport Policies: Delivering a highway network that is safe, sustainable and accessible for all.	Traffic planning and management: Improvement of public transport	Implementation	Start date: 2002 Expected end date: 2030 Spatial scale: Whole town or city Source affected: Transport Indicator: Reduction in vehicle emissions Target emissions reduction: N/A
Manchester City Council_CP2	Sustainable transport	Promoting sustainable transport choices and cutting car use by placing Public Transport at the heart of the transport network whilst encouraging more cycling and walking.	Traffic planning and management: Encouragement of shift of transport modes	Implementation	Start date: 2013 Expected end date: 2030 Spatial scale: Whole town or city Source affected: Transport Indicator: Reduction in vehicle emissions Target emissions reduction: N/A
Manchester City Council_CP3	Health through active travel	Joined-up working with the health policy agenda to improve health through active travel.	Traffic planning and management: Encouragement of shift of transport modes	Implementation	Start date: 2012 Expected end date: 2012 Spatial scale: Whole town or city Source affected: Transport Indicator: Reduction in vehicle emissions Target emissions reduction: N/A
Manchester City Council_CP4	Tackling Climate Change	Tackling Climate Change through reducing carbon emissions: Influencing the Local Development Framework to ensure land-use strategies reduce the need to travel and help deliver air quality policy objectives.	Other measure: Other measure	Planning	Start date: 2014 Expected end date: 2014 Spatial scale: Whole town or city Source affected: Transport Indicator: Reduction in vehicle emissions Target emissions reduction: N/A
Manchester City Council_CP5	Transport Strategy	Development of Transport Strategy for Manchester City Centre (TSfMCC) includes policies and schemes that will have positive outcomes on air quality by removing through traffic, prioritising bus routes and improving the public realm for pedestrians and cyclists	Traffic planning and management: Improvement of public transport	Implementation	Start date: 2010 Expected end date: 2030 Spatial scale: Whole town or city Source affected: Transport Indicator: Reduction in vehicle emissions Target emissions reduction: N/A
Manchester City Council_CP6	Parking policies	Parking policies to discourage long stay commuter parking in city centre and efficiently direct vehicles into available parking	Traffic planning and management: Management of parking places	Evaluation	Start date: 2011 Expected end date: 2011 Spatial scale: Whole town or city Source affected: Transport Indicator: Reduction in vehicle emissions Target emissions reduction: N/A

Measure code	Description	Focus	Classification	Status	Other information
Manchester City Council_CP7	Bus Lane Enforcement Strategy	To undertake the civil enforcement of bus lanes in Manchester to provide more reliable bus journeys thus encouraging modal shift.	Traffic planning and management: Improvement of public transport	Evaluation	Start date: 2006 Expected end date: 2030 Spatial scale: Local Source affected: Transport Indicator: Reduction in vehicle emissions Target emissions reduction: N/A
Manchester City Council_E7	Cycling	Encourage an increase in Cycling: The Greater Manchester (GM) Cycling Strategy and proposed Cycling Vision for Manchester will contribute to encouraging modal shift away from the car, reducing emissions.	Traffic planning and management: Encouragement of shift of transport modes	Implementation	Start date: 2012 Expected end date: 2015 Spatial scale: Whole town or city Source affected: Transport Indicator: Reduction in vehicle emissions Target emissions reduction: N/A
Manchester City Council_2017_CP1	Transport Policy	The Manchester Strategy' identified a need to make further improvements to air quality in the city, especially in the city centre and near other areas with high levels of traffic.	Traffic planning and management: Other measure	Implementation	Start date: 2016 Expected end date: 2026 Spatial scale: Whole town or city Source affected: Transport Indicator: Annual mean nitrogen dioxide concentrations (ug/m) Target emissions reduction: N/A
Manchester City Council_2017_E15 and E8_1	Airport ground travel emissions reduction schemes - 2017 update	. Construction of a ground transport interchange . Ongoing implementation and promotion of staff travel plan . Construction of a third rail platform	Traffic planning and management: Improvement of public transport	Implementation	Start date: 1997 Expected end date: 2030 Spatial scale: Local Source affected: Transport Indicator: Reduction in car journeys Target emissions reduction: N/A
Manchester City Council_2017_E15 and E8_2	Airport emissions reduction - 2017 update	Promotion of low emission vehicles	Other measure: Other measure	Implementation	Start date: 1997 Expected end date: 2030 Spatial scale: Local Source affected: Transport Indicator: Minimise the area of the 40ugm-3 NO2 contour for airport emission sources. Target emissions reduction: N/A
Oldham Metropolitan Borough Council_1	Introduction of Metrolink from Manchester - Oldham - Rochdale	Encourage modal shift from private car to public transport. Metrolink produced no vehicle emissions at source.	Traffic planning and management: Improvement of public transport	Implementation	Start date: 2010 Expected end date: 2014 Spatial scale: Whole agglomeration Source affected: Transport Indicator: Metrolink patronage Target emissions reduction: N/A
Oldham Metropolitan Borough Council_2	2 QBC's (Quality Bus Corridors) to be introduced: the A671/A627 Rochdale/Oldham/Ashton/Hyde (ROAH) QBC and the A62/A669 Manchester/Oldham/Grotton/Saddleworth QBC	Reduction in car journeys and exhaust emissions.	Traffic planning and management: Improvement of public transport	N/A	Start date: 2006 Expected end date: 2010 Spatial scale: Local Source affected: Transport Indicator: N/A Target emissions reduction: N/A

Measure code	Description	Focus	Classification	Status	Other information
Oldham Metropolitan Borough Council_3	New Bus Station	Improved facilities to encourage bus use and modal shift from private car.	Traffic planning and management: Improvement of public transport	Implementation	Start date: 2008 Expected end date: 2014 Spatial scale: Whole town or city Source affected: Transport Indicator: Bus station Target emissions reduction: N/A
Oldham Metropolitan Borough Council_4	Introduction of Quality Bus Partnerships	Agreements with bus operators on minimum engine standards.	Public procurement: Cleaner vehicle transport services	Implementation	Start date: 2010 Expected end date: 2012 Spatial scale: Whole agglomeration Source affected: Transport Indicator: N/A Target emissions reduction: N/A
Oldham Metropolitan Borough Council_5	Preparation of local strategies to encourage walking and cycling in Oldham	Encourage walking and cycling in the borough as these forms of transport produce no emissions	Traffic planning and management: Encouragement of shift of transport modes	Implementation	Start date: 2006 Expected end date: 2015 Spatial scale: Whole town or city Source affected: Transport Indicator: N/A Target emissions reduction: N/A
Oldham Metropolitan Borough Council_6	Continue enforcement of illegal on-street parking	Reducing congestion caused by illegal parking	Traffic planning and management: Management of parking places	Implementation	Start date: 2012 Expected end date: 2015 Spatial scale: Whole town or city Source affected: Transport Indicator: N/A Target emissions reduction: N/A
Oldham Metropolitan Borough Council_7	Continuation of roadside emission testing scheme (Now expanded to Cleaner Vehicles Campaign)	Reducing the number of grossly polluting vehicles.	Other measure: Other measure	Implementation	Start date: 2004 Expected end date: 2012 Spatial scale: Whole agglomeration Source affected: Transport Indicator: Reduction in the number of grossly polluting vehicles. Target emissions reduction: N/A
Oldham Metropolitan Borough Council_8	Participation in a feasibility study into a Low Emission Zone in partnership with the other Greater Manchester Authorities	To determine whether the introduction of an LEZ would be beneficial to Greater Manchester.	Other measure: Other measure	Planning	Start date: 2008 Expected end date: 2015 Spatial scale: Whole agglomeration Source affected: Transport Indicator: N/A Target emissions reduction: N/A
Oldham Metropolitan Borough Council_9	Employ a Travel co-ordinator with responsibility to encourage businesses to develop travel plans	Oldham Council	Traffic planning and management: Encouragement of shift of transport modes	Implementation	Start date: 2006 Expected end date: 2015 Spatial scale: Whole town or city Source affected: Transport Indicator: N/A Target emissions reduction: N/A
Oldham Metropolitan Borough Council_10	Encourage schools to develop school travel plans and Oldham MBC to implement Safer Routes to School schemes.	To reduce emissions associated with travel to school.	Traffic planning and management: Encouragement of shift of transport modes	Implementation	Start date: 2006 Expected end date: 2015 Spatial scale: Whole town or city Source affected: Transport Indicator: N/A Target emissions reduction: N/A

Measure code	Description	Focus	Classification	Status	Other information
Oldham Metropolitan Borough Council_11	Encourage businesses to develop staff travel plans and alternatives to traditional HGVs	To reduce transport emissions from businesses operating in the area.	Traffic planning and management: Encouragement of shift of transport modes	Implementation	Start date: 2006 Expected end date: 2015 Spatial scale: Whole town or city Source affected: Transport Indicator: N/A Target emissions reduction: N/A
Oldham Metropolitan Borough Council_12	Implement Oldham MBC travel plan for employees	Reducing emissions from staff travel to work and on Council business	Traffic planning and management: Encouragement of shift of transport modes	Implementation	Start date: 2006 Expected end date: 2015 Spatial scale: Whole town or city Source affected: Transport Indicator: N/A Target emissions reduction: N/A
Oldham Metropolitan Borough Council_13	Development of a travel Plan with Royal Oldham Hospital 'Healthy Futures'	Reducing emissions associated with travel to and from the hospital	Traffic planning and management: Encouragement of shift of transport modes	Implementation	Start date: 2006 Expected end date: 2015 Spatial scale: Local Source affected: Transport Indicator: N/A Target emissions reduction: N/A
Oldham Metropolitan Borough Council_14	Improve air quality emissions from Council Fleet Vehicles	To reduce emissions associated with the Council Vehicle fleet	Other measure: Other measure	Implementation	Start date: 2006 Expected end date: 2015 Spatial scale: Whole town or city Source affected: Transport Indicator: N/A Target emissions reduction: N/A
Oldham Metropolitan Borough Council_15	Consultation with local businesses and community about air quality issues	To raise awareness of air quality issues.	Public information and Education: Other mechanisms	Other	Start date: 2006 Expected end date: 2015 Spatial scale: Whole town or city Source affected: Other, please specify Indicator: N/A Target emissions reduction: N/A
Oldham Metropolitan Borough Council_16	Increase awareness of Smoke Control Areas	Reducing emissions from domestic coal/wood burning	Public information and Education: Other mechanisms	Implementation	Start date: 2006 Expected end date: 2015 Spatial scale: Whole town or city Source affected: Commercial and residential sources Indicator: N/A Target emissions reduction: N/A
Oldham Metropolitan Borough Council_17	Air quality assessments required for large non-residential developments	To ensure that new developments do not significantly affect air quality.	Other measure: Other measure	Implementation	Start date: 2007 Expected end date: 2015 Spatial scale: Local Source affected: Commercial and residential sources Indicator: N/A Target emissions reduction: N/A

Measure code	Description	Focus	Classification	Status	Other information
Oldham Metropolitan Borough Council_18	Requirement for travel plans to be submitted with applications for large non residential applications	To ensure that new developments do not significantly affect air quality.	Traffic planning and management: Encouragement of shift of transport modes	Implementation	Start date: 2006 Expected end date: 2015 Spatial scale: Local Source affected: Transport Indicator: N/A Target emissions reduction: N/A
Oldham Metropolitan Borough Council_19	Health impact assessment required for sensitive development such as hospitals and residential homes located within the AQMA	Ensuring that sensitive developments are not exposed to poor air quality	Other measure: Other measure	Implementation	Start date: 2006 Expected end date: 2015 Spatial scale: Local Source affected: Commercial and residential sources Indicator: N/A Target emissions reduction: N/A
Oldham Metropolitan Borough Council_20	Section 106 agreements to improve transport links for new development	To reduce the impact of new development	Other measure: Other measure	Implementation	Start date: 2006 Expected end date: 2015 Spatial scale: Whole town or city Source affected: Transport Indicator: N/A Target emissions reduction: N/A
Oldham Metropolitan Borough Council_21	All new major developments are required to have 10% of total predicted energy requirements to be provided from renewable energy sources	Reducing emissions from new developments	Low emission fuels for stationary and mobile sources: Other measure	Implementation	Start date: 2006 Expected end date: 2015 Spatial scale: Whole town or city Source affected: Industry including heat and power production Indicator: N/A Target emissions reduction: N/A
Oldham Metropolitan Borough Council_22	Work with Environment Agency to address waste burning by businesses	Reducing emissions from illegal burning of waste	Other measure: Other measure	Implementation	Start date: 2001 Expected end date: 2015 Spatial scale: Whole town or city Source affected: Commercial and residential sources Indicator: N/A Target emissions reduction: N/A
Oldham Metropolitan Borough Council_23	Implement the Industrial permitting regime.	Ensuring that businesses use best available techniques to reduce emissions	Permit systems and economic instruments: Introduction/increase of environment charges	Implementation	Start date: 2001 Expected end date: 2015 Spatial scale: Whole town or city Source affected: Industry including heat and power production Indicator: N/A Target emissions reduction: N/A
Oldham Metropolitan Borough Council_24	Enforce smoke control provisions where possible	To reduce the impact of domestic coal and wood burning.	Other measure: Other measure	Implementation	Start date: 2001 Expected end date: 2015 Spatial scale: Whole town or city Source affected: Commercial and residential sources Indicator: N/A Target emissions reduction: N/A

Measure code	Description	Focus	Classification	Status	Other information
Oldham Metropolitan Borough Council_25	Develop partnerships [with Energy Savings Trust] to encourage energy efficiency in the home	To reduce emissions from domestic heating.	Other measure: Other measure	Implementation	Start date: 2014 Expected end date: 2014 Spatial scale: Whole town or city Source affected: Commercial and residential sources Indicator: N/A Target emissions reduction: N/A
Oldham Metropolitan Borough Council_26	Implement Energy Strategy for Council buildings, housing and fleet	To reduce emissions from Council activities, particularly associated with the use of buildings.	Other measure: Other measure	Implementation	Start date: 2014 Expected end date: 2014 Spatial scale: Whole town or city Source affected: Commercial and residential sources Indicator: N/A Target emissions reduction: N/A
Oldham Metropolitan Borough Council_27	Implement Home Energy Conservation Act Strategy and Action Plan (Rename: Deliver schemes to reduce emissions from housing)	To reduce emissions from domestic heating.	Other measure: Other measure	Implementation	Start date: 2014 Expected end date: 2014 Spatial scale: Whole town or city Source affected: Commercial and residential sources Indicator: N/A Target emissions reduction: N/A
Oldham Metropolitan Borough Council_28	Development of air quality and construction site guidance in partnership with Environmental Protection UK	Reducing emissions from construction and demolition sites.	Other measure: Other measure	Implementation	Start date: 2001 Expected end date: 2015 Spatial scale: Whole town or city Source affected: Commercial and residential sources Indicator: Completion of document Target emissions reduction: N/A
Oldham Metropolitan Borough Council_29	Introduction of GM Electric Vehicle Infrastructure Scheme	To provide infrastructure which will encourage the uptake of electric vehicles	Public procurement: Other measure	Implementation	Start date: 2013 Expected end date: 2015 Spatial scale: Whole agglomeration Source affected: Transport Indicator: N/A Target emissions reduction: N/A
Oldham Metropolitan Borough Council_30	New electric vehicle POD in Hollinwood	N/A	Public procurement: Other measure	Implementation	Start date: 2014 Expected end date: 2014 Spatial scale: Whole town or city Source affected: Transport Indicator: N/A Target emissions reduction: N/A
Oldham Metropolitan Borough Council_31	New town centre cycle hub in Oldham town centre (New wording - Improve cycling facilities in Oldham Town Centre)	To encourage cycling to Oldham Town Centre	Public procurement: Other measure	Implementation	Start date: 2014 Expected end date: 2014 Spatial scale: Whole town or city Source affected: Transport Indicator: N/A Target emissions reduction: N/A

Measure code	Description	Focus	Classification	Status	Other information
Oldham Metropolitan Borough Council_32	Local Sustainable Transport Fund main bid	Programme of measures to encourage modal shift and reduce congestion	Traffic planning and management: Encouragement of shift of transport modes	Implementation	Start date: 2014 Expected end date: 2014 Spatial scale: Whole agglomeration Source affected: Transport Indicator: Reduction in car journeys Target emissions reduction: N/A
Oldham Metropolitan Borough Council_33	Increased cycle use	Encouraging cycle use, which produces no emissions	Traffic planning and management: Encouragement of shift of transport modes	Implementation	Start date: 2014 Expected end date: 2014 Spatial scale: Whole agglomeration Source affected: Transport Indicator: Increased cycle use Target emissions reduction: N/A
Oldham Metropolitan Borough Council_34	Implementation of private hire and hackney carriage licensing policies relating to controlling emissions	Controlling emissions of private hire and hackney carriage emissions.	Permit systems and economic instruments: Introduction/increase of environment taxes	Implementation	Start date: 2013 Expected end date: 2015 Spatial scale: Whole town or city Source affected: Transport Indicator: N/A Target emissions reduction: N/A
Oldham Metropolitan Borough Council_35	Consider opportunities to develop renewable energy sources in Oldham	Reduce emissions from energy production.	Low emission fuels for stationary and mobile sources: Shift to installations using low emission fuels	Planning	Start date: 2014 Expected end date: 2014 Spatial scale: Local Source affected: Industry including heat and power production Indicator: N/A Target emissions reduction: N/A
Rochdale Metropolitan Borough Council_1	Awareness campaigns	Awareness campaigns to increase knowledge and understanding of AQ issues	Public information and Education: Other mechanisms	Other	Start date: 2006 Expected end date: 2030 Spatial scale: Local Source affected: Commercial and residential sources Indicator: N/A Target emissions reduction: N/A
Rochdale Metropolitan Borough Council_2	Home energy efficiency and renewable energy	Work on promoting and improving home energy efficiency and renewable energy including setting planning guidance	Public information and Education: Other mechanisms	Other	Start date: 2006 Expected end date: 2030 Spatial scale: Whole town or city Source affected: Commercial and residential sources Indicator: N/A Target emissions reduction: N/A
Rochdale Metropolitan Borough Council_3	School travels plans	Implementing school travel plans to minimise traffic in school areas	Traffic planning and management: Encouragement of shift of transport modes	Evaluation	Start date: 2004 Expected end date: 2011 Spatial scale: Whole town or city Source affected: Transport Indicator: Reduction in congestion in surrounding school areas Target emissions reduction: N/A

Measure code	Description	Focus	Classification	Status	Other information
Rochdale Metropolitan Borough Council_4	Congestion management programme	Reduce congestion	Traffic planning and management: Other measure	Implementation	Start date: 2011 Expected end date: 2015 Spatial scale: Whole town or city Source affected: Transport Indicator: Reduction in congestion on main truck roads at peak times Target emissions reduction: N/A
Rochdale Metropolitan Borough Council_5	Reduction of speed limits	Reduction of speed limits to 20 mph in areas around schools	Traffic planning and management: Reduction of speed limits and control	Evaluation	Start date: 2009 Expected end date: 2014 Spatial scale: Local Source affected: Transport Indicator: N/A Target emissions reduction: N/A
Rochdale Metropolitan Borough Council_6	Metrolink expansion	Metrolink extension to Rochdale	Traffic planning and management: Encouragement of shift of transport modes	Implementation	Start date: 2011 Expected end date: 2014 Spatial scale: National Source affected: Transport Indicator: Increase use of public transport Target emissions reduction: N/A
Rochdale Metropolitan Borough Council_7	Workplace travel planning	Travel plans produced to support all eligible major employment and residential developments in the Borough in line with DfT / DCLG guidance.	Traffic planning and management: Encouragement of shift of transport modes	Implementation	Start date: 2013 Expected end date: 2015 Spatial scale: Local Source affected: Transport Indicator: N/A Target emissions reduction: N/A
Rochdale Metropolitan Borough Council_8	Kingsway Business Park Travel Plan	Integration of a comprehensive sustainable network on the site and provision of links to surrounding areas.	Traffic planning and management: Encouragement of shift of transport modes	Implementation	Start date: 2005 Expected end date: 2020 Spatial scale: Whole town or city Source affected: Transport Indicator: N/A Target emissions reduction: N/A
Rochdale Metropolitan Borough Council_9	Home-working initiatives	Facilitating RMBC workers to work from homes	Other measure: Other measure	Implementation	Start date: 2008 Expected end date: 2020 Spatial scale: Whole town or city Source affected: Transport Indicator: N/A Target emissions reduction: N/A
Rochdale Metropolitan Borough Council_10	Promotion of cycling	Promoting cycling in the Borough through Rochdale MBC's connect 2 Project.	Traffic planning and management: Encouragement of shift of transport modes	Implementation	Start date: 2010 Expected end date: 2020 Spatial scale: Whole town or city Source affected: Transport Indicator: N/A Target emissions reduction: N/A

Measure code	Description	Focus	Classification	Status	Other information
Rochdale Metropolitan Borough Council_11	Promoting walking	Promoting active lifestyle	Traffic planning and management: Encouragement of shift of transport modes	Implementation	Start date: 2011 Expected end date: 2020 Spatial scale: Local Source affected: Transport Indicator: N/A Target emissions reduction: N/A
Rochdale Metropolitan Borough Council_12	Promoting cycling	Encouraging RMBC employees to take up cycling	Traffic planning and management: Encouragement of shift of transport modes	Evaluation	Start date: 2007 Expected end date: 2012 Spatial scale: Local Source affected: Transport Indicator: N/A Target emissions reduction: N/A
Rochdale Metropolitan Borough Council_13	Promotion of rail use	Work with TfGM and other partners to promote rail travel to/ from the Borough's five stations and working with other Councils along the Calder Valley Line to build a business case for electrification in Network Rail CP6 (2019-2025)	Traffic planning and management: Encouragement of shift of transport modes	Implementation	Start date: 2010 Expected end date: 2020 Spatial scale: National Source affected: Transport Indicator: Increase in numbers using rail travel Target emissions reduction: N/A
Rochdale Metropolitan Borough Council_14	Increase use of canalways	Increasing use of the Canal by both waterways and cycle route	Traffic planning and management: Encouragement of shift of transport modes	Implementation	Start date: 2007 Expected end date: 2020 Spatial scale: Whole town or city Source affected: Transport Indicator: N/A Target emissions reduction: N/A
Rochdale Metropolitan Borough Council_15	Promotion of travel information - Via internet	Ensuring the public have up-to-date information on public transport timetable etc.	Public information and Education: Internet	Other	Start date: 2009 Expected end date: 2025 Spatial scale: Whole town or city Source affected: Transport Indicator: N/A Target emissions reduction: N/A
Rochdale Metropolitan Borough Council_16	Promotion of travel information - Via leaflets	To ensure the public are aware of changes or disruptions the public transport/ transport network	Public information and Education: Leaflets	Implementation	Start date: 2006 Expected end date: 2025 Spatial scale: Whole town or city Source affected: Transport Indicator: N/A Target emissions reduction: N/A
Rochdale Metropolitan Borough Council_17	Promotion of travel information - via media, including social media	Using both news media and social media to promote alternative travel options and information	Public information and Education: Other mechanisms	Implementation	Start date: 2009 Expected end date: 2025 Spatial scale: Whole town or city Source affected: Transport Indicator: N/A Target emissions reduction: N/A
Rochdale Metropolitan Borough Council_18	Public transport improvements	Improving public transport links to Rochdale and surrounding areas	Traffic planning and management: Improvement of public transport	Implementation	Start date: 2011 Expected end date: 2016 Spatial scale: Whole town or city Source affected: Transport Indicator: N/A Target emissions reduction: N/A

Measure code	Description	Focus	Classification	Status	Other information
Rochdale Metropolitan Borough Council_19	Bicycle hire	Providing bicycles to hire at railway stations etc. under Bike and Go Scheme	Traffic planning and management: Expansion of bicycle and pedestrian infrastructure	Implementation	Start date: 2014 Expected end date: 2025 Spatial scale: Local Source affected: Transport Indicator: N/A Target emissions reduction: N/A
Rochdale Metropolitan Borough Council_20	Increase cycling within Borough	Provide cycleways for the public to use to increase recreational cycling in area	Traffic planning and management: Expansion of bicycle and pedestrian infrastructure	Implementation	Start date: 2007 Expected end date: 2020 Spatial scale: Local Source affected: Transport Indicator: N/A Target emissions reduction: N/A
Rochdale Metropolitan Borough Council_21	Increasing use of Cycle Network	Increasing use of the Cycle network	Traffic planning and management: Expansion of bicycle and pedestrian infrastructure	Implementation	Start date: 2007 Expected end date: 2015 Spatial scale: Whole town or city Source affected: Transport Indicator: N/A Target emissions reduction: N/A
Rochdale Metropolitan Borough Council_22	Increasing use of Public transport	Providing alternatives to standard bus links by using other measures	Traffic planning and management: Improvement of public transport	Implementation	Start date: 2010 Expected end date: 2016 Spatial scale: Whole town or city Source affected: Transport Indicator: Increase in uptake of available options Target emissions reduction: N/A
Rochdale Metropolitan Borough Council_23	Increasing use of Public transport	Use of Metrolink	Traffic planning and management: Other measure	Evaluation	Start date: 2013 Expected end date: 2014 Spatial scale: Whole town or city Source affected: Transport Indicator: Increase of bus patronage Target emissions reduction: N/A
Rochdale Metropolitan Borough Council_24	Park and Ride Scheme	Encourage use of public transport	Traffic planning and management: Improvement of public transport	Implementation	Start date: 2012 Expected end date: 2015 Spatial scale: Whole town or city Source affected: Transport Indicator: Uptake of available parking space / use of service Target emissions reduction: N/A
Rochdale Metropolitan Borough Council_25	Car share Scheme	Encouraging both RMBC employees and the public to use car sharing scheme	Other measure: Other measure	Implementation	Start date: 2010 Expected end date: 2020 Spatial scale: Whole town or city Source affected: Transport Indicator: Figures show an increase in uptake of the scheme Target emissions reduction: N/A

Measure code	Description	Focus	Classification	Status	Other information
Rochdale Metropolitan Borough Council_26	GM Air Quality group	GM Authorities work together to execute their LAQM duties particularly for modelling work and collecting data	Other measure: Other measure	Implementation	Start date: 2001 Expected end date: 2030 Spatial scale: Whole agglomeration Source affected: Transport Indicator: N/A Target emissions reduction: N/A
Rochdale Metropolitan Borough Council_27	Planning and policy development	Developing a core strategy to deal with air quality within the Borough	Other measure: Other measure	Implementation	Start date: 2007 Expected end date: 2030 Spatial scale: Whole agglomeration Source affected: Transport Indicator: N/A Target emissions reduction: N/A
Rochdale Metropolitan Borough Council_28	Low Emissions strategy	Low emission strategy required for all developments requiring a transport assessment	Other measure: Other measure	Implementation	Start date: 2012 Expected end date: 2020 Spatial scale: National Source affected: Transport Indicator: N/A Target emissions reduction: N/A
Rochdale Metropolitan Borough Council_29	Smart Motorway scheme	Introducing a smart motorway network which will go through Rochdale	Traffic planning and management: Other measure	Implementation	Start date: 2010 Expected end date: 2020 Spatial scale: Whole agglomeration Source affected: Transport Indicator: N/A Target emissions reduction: N/A
Rochdale Metropolitan Borough Council_30	Greener Vehicles	Ensuring RMBC fleet vehicles are working at optimum efficiency to reduce fuel consumption	Retrofitting: Retrofitting emission control equipment to vehicles	Evaluation	Start date: 2013 Expected end date: 2015 Spatial scale: Whole town or city Source affected: Transport Indicator: Fuel consumption figures Target emissions reduction: N/A
Rochdale Metropolitan Borough Council_31	Promoting Low Emission Public Transport	TfGM and GM Bus Operators have secured significant Green Bus Funding upgrade	Public procurement: Other measure	Implementation	Start date: 2010 Expected end date: 2020 Spatial scale: Whole town or city Source affected: Transport Indicator: Increase of hybrid buses in Borough Target emissions reduction: N/A
Rochdale Metropolitan Borough Council_32	Enigma	Recording data from combustion plant and permitted processes to input into air quality models	Other measure: Other measure	Implementation	Start date: 2005 Expected end date: 2030 Spatial scale: Whole town or city Source affected: Industry including heat and power production Indicator: N/A Target emissions reduction: N/A

Measure code	Description	Focus	Classification	Status	Other information
Rochdale Metropolitan Borough Council_33	Freight Air Quality Best Practice Guidance	Promote and Develop Freight Air Quality Best Practice Guidance for circulation amongst HGV and fleet operators	Traffic planning and management: Freight transport measure	Implementation	Start date: 2014 Expected end date: 2030 Spatial scale: Whole Agglomeration Source affected: Transport Indicator: Requires further investigation of impacts Target emissions reduction: N/A
Rochdale Metropolitan Borough Council_34	GM Drivers Freight Map	Produce GM Freight routes map for drivers	Traffic planning and management: Freight transport measure	Implementation	Start date: 2008 Expected end date: 2008 Spatial scale: Whole Agglomeration Source affected: Transport Indicator: Requires further investigation of impacts Target emissions reduction: N/A
Rochdale Metropolitan Borough Council_35	Night-time deliveries	Study of feasibility and dissemination to planning officers	Traffic planning and management: Freight transport measure	Implementation	Start date: 2010 Expected end date: 2010 Spatial scale: Whole Agglomeration Source affected: Transport Indicator: N/A Target emissions reduction: N/A
Rochdale Metropolitan Borough Council_36	Environmental impact points for freight on the road and rail network	Identify and address key environmental impact points for freight on the road and rail network	Traffic planning and management: Freight transport measure	Implementation	Start date: 2010 Expected end date: 2010 Spatial scale: Whole Agglomeration Source affected: Transport Indicator: Requires further investigation of impacts Target emissions reduction: N/A
Rochdale Metropolitan Borough Council_37	Work with bus operators to reduce bus emissions	GM-wide	Public procurement: New vehicles, including low emission vehicles	Implementation	Start date: 2014 Expected end date: 2030 Spatial scale: Whole Agglomeration Source affected: Transport Indicator: N/A Target emissions reduction: N/A
Rochdale Metropolitan Borough Council_38	Bus Quality Agreements	Agreements with bus operators on minimum engine standards in particular locations, or generally	Public procurement: Other measure	Implementation	Start date: 2014 Expected end date: 2030 Spatial scale: Whole Agglomeration Source affected: Transport Indicator: N/A Target emissions reduction: N/A
Rochdale Metropolitan Borough Council_39	Real Time Information	Real time information about transport direct to smart phones	Traffic planning and management: Encouragement of shift of transport modes	Implementation	Start date: 2014 Expected end date: 2015 Spatial scale: Whole Agglomeration Source affected: Transport Indicator: Reduction in car journeys Target emissions reduction: N/A

Measure code	Description	Focus	Classification	Status	Other information
Rochdale Metropolitan Borough Council_40	Public Transport Subsidies	Public subsidy of socially necessary bus services that would not otherwise be provided on a commercial basis by bus operators	Traffic planning and management: Improvement of public transport	Implementation	Start date: 2014 Expected end date: 2030 Spatial scale: Whole Agglomeration Source affected: Transport Indicator: Reduction in car journeys Target emissions reduction: N/A
Rochdale Metropolitan Borough Council_41	Metrolink Expansion	Expansion of the tram network (which is zero emission at the point of use), including park and ride	Traffic planning and management: Improvement of public transport	Implementation	Start date: 2014 Expected end date: 2016 Spatial scale: Whole Agglomeration Source affected: Transport Indicator: Reduction in car journeys Target emissions reduction: N/A
Rochdale Metropolitan Borough Council_42	Local Sustainable Transport Fund Programme	Programme of new walk/cycle routes, cycle parking, an extensive Smarter Choices promotional campaign, measures for active traffic management (Bluetooth sensors) to reduce congestion	Traffic planning and management: Encouragement of shift of transport modes	Implementation	Start date: 2014 Expected end date: 2015 Spatial scale: Whole Agglomeration Source affected: Transport Indicator: Reduction in car journeys Target emissions reduction: N/A
Rochdale Metropolitan Borough Council_43	Cycle City Ambition Grant Programme ('Velocity')	Programme of 56 kms of largely segregated cycle routes, cycle parking, cycle promotion and work with schools. Within M60 ring.	Traffic planning and management: Encouragement of shift of transport modes	Implementation	Start date: 2014 Expected end date: 2015 Spatial scale: Whole Agglomeration Source affected: Transport Indicator: Reduction in car journeys Target emissions reduction: N/A
Rochdale Metropolitan Borough Council_44	Cycle City Ambition Grant ('Greater Manchester Cycle City 2025')	Expansion of original CCAG scheme above (NEW 2) to areas outside M60	Traffic planning and management: Encouragement of shift of transport modes	Implementation	Start date: 2014 Expected end date: 2018 Spatial scale: Whole Agglomeration Source affected: Transport Indicator: Reduction in car journeys Target emissions reduction: N/A
Rochdale Metropolitan Borough Council_45	Better Bus Area Fund	Series of measures to improve the attractiveness of bus travel (bus priority, information, promotion)	Traffic planning and management: Improvement of public transport	Implementation	Start date: 2014 Expected end date: 2015 Spatial scale: Whole Agglomeration Source affected: Transport Indicator: Reduction in car journeys Target emissions reduction: N/A
Rochdale Metropolitan Borough Council_46	Bus Priority Package	40 kms of bus priority routes linking 3 corridors(from Leigh, Middleton and Didsbury) across central Manchester to allow more through journeys. The route from Leigh includes a 7 km guided busway.	Traffic planning and management: Improvement of public transport	Implementation	Start date: 2014 Expected end date: 2015 Spatial scale: Whole Agglomeration Source affected: Transport Indicator: Reduction in car journeys Target emissions reduction: N/A
Rochdale Metropolitan Borough Council_47	Trafford Park Metrolink	Metrolink extension to Trafford Park employment area and Trafford Centre sub-regional Shopping Centre	Traffic planning and management: Other measure	Implementation	Start date: 2014 Expected end date: 2020 Spatial scale: Whole Agglomeration Source affected: Transport Indicator: Reduction in car journeys Target emissions reduction: N/A

Measure code	Description	Focus	Classification	Status	Other information
Rochdale Metropolitan Borough Council_48	Electric Vehicle Charging Points	Charging points for Electric vehicles at locations throughout GM	Public procurement: Other measure	Implementation	Start date: 2014 Expected end date: 2014 Spatial scale: Whole Agglomeration Source affected: Transport Indicator: Reduction in CO2/NOx/PM Target emissions reduction: N/A
Rochdale Metropolitan Borough Council_49	Park and Ride at rail stations	Park and ride at the following stations: Horwich (90), Cheadle Hulme (29), Guide Bridge (119), Irlam (60), Hazel Grove (100) and Hindley (28)	Traffic planning and management: Improvement of public transport	Implementation	Start date: 2014 Expected end date: 2016 Spatial scale: Whole Agglomeration Source affected: Transport Indicator: Reduction in car mileage Target emissions reduction: N/A
Rochdale Metropolitan Borough Council_50	Rail electrification	Electrification of Liverpool-Manchester (2015), Liverpool-Wigan (2015), Manchester-Preston (2017) and north TransPennine i.e. Manchester-Huddersfield (2018)	Traffic planning and management: Improvement of public transport	Implementation	Start date: 2015 Expected end date: 2018 Spatial scale: Whole Agglomeration Source affected: Transport Indicator: Reduction in CO2/NOx/PM (faster journeys will attract more people out of cars) Target emissions reduction: N/A
Rochdale Metropolitan Borough Council_51	Managed Motorway	Management of traffic flows J8 of M60 to J20 M62	Traffic planning and management: Other measure	Implementation	Start date: 2014 Expected end date: 2017 Spatial scale: Whole Agglomeration Source affected: Transport Indicator: Reduced congestion and hence emissions Target emissions reduction: N/A
Rochdale Metropolitan Borough Council_52	Northern Hub	Package of measures to increase capacity on the north of England rail network focussed on Manchester	Traffic planning and management: Improvement of public transport	Implementation	Start date: 2014 Expected end date: 2018 Spatial scale: Whole Agglomeration Source affected: Transport Indicator: Reduction in CO2/NOx/PM (more capacity will attract more people out of cars) Target emissions reduction: N/A
Rochdale Metropolitan Borough Council_53	Transport for Sustainable Communities: a guide for developers	Non-statutory guidance on maximising mode share of sustainable transport	Traffic planning and management: Encouragement of shift of transport modes	Implementation	Start date: 2013 Expected end date: 2013 Spatial scale: Whole Agglomeration Source affected: Transport Indicator: Reduction in CO2/NOx/PM10 Target emissions reduction: N/A
Rochdale Metropolitan Borough Council_54	Trial Pollution Barrier	Barrier at side of M62 in Rochdale area to reduce NOx	Traffic planning and management: Other measure	Implementation	Start date: 2014 Expected end date: 2014 Spatial scale: Whole Agglomeration Source affected: Transport Indicator: N/A Target emissions reduction: N/A

Measure code	Description	Focus	Classification	Status	Other information
Salford Metropolitan Borough Council_1	Awareness Campaigns Organise public events to increase knowledge and understanding of AQ issues.	N/A	Public information and Education: Other mechanisms	Implementation	Start date: 2004 Expected end date: 2030 Spatial scale: Whole Agglomeration Source affected: Transport Indicator: N/A Target emissions reduction: N/A
Salford Metropolitan Borough Council_2	Travel advice/info on local travel options.	City wide developments	Traffic planning and management: Improvement of public transport	Implementation	Start date: 2007 Expected end date: 2012 Spatial scale: Whole Agglomeration Source affected: Transport Indicator: Increase in public transport / sustainable travel undertaken. Target emissions reduction: Emission reduction not quantified but air quality is expected to improve.
Salford Metropolitan Borough Council_3	QBC bus corridors	Guided Busway	Traffic planning and management: Encouragement of shift of transport modes	Implementation	Start date: 1990 Expected end date: 2030 Spatial scale: Whole Agglomeration Source affected: Transport Indicator: Increase bus patronage Target emissions reduction: Emission reduction not quantified but air quality is expected to improve.
Salford Metropolitan Borough Council_4	Leigh/Salford/ Manchester QBC	LSM Busway / Cross City Vantage service	Traffic planning and management: Encouragement of shift of transport modes	Implementation	Start date: 2013 Expected end date: 2016 Spatial scale: Whole Agglomeration Source affected: Transport Indicator: N/A Target emissions reduction: Emission reduction not quantified but air quality is expected to improve. Patronage approximately 50,000 per week
Salford Metropolitan Borough Council_5	A6 Chapel Street	N/A	Traffic planning and management: Improvement of public transport	Implementation	Start date: 2014 Expected end date: 2030 Spatial scale: Whole town or city Source affected: Transport Indicator: N/A Target emissions reduction: Emission reduction not quantified but air quality is expected to improve.

Measure code	Description	Focus	Classification	Status	Other information
Salford Metropolitan Borough Council_6	Regent Road / Water Street junction	Measures to reduce queuing	Traffic planning and management: Encouragement of shift of transport modes	Implementation	Start date: 2014 Expected end date: 2016 Spatial scale: Whole town or city Source affected: Transport Indicator: Reduce queuing / improve traffic flow Target emissions reduction: Emission reduction not quantified but air quality is expected to improve.
Salford Metropolitan Borough Council_7	Improving Cycling awareness and Facilities. (E7)	Delivery of Growth Deal and Cycle City Ambition Grant (CCAG) programmes	Traffic planning and management: Encouragement of shift of transport modes	Implementation	Start date: 2014 Expected end date: 2025 Spatial scale: Whole Agglomeration Source affected: Transport Indicator: Increase cycling Target emissions reduction: Emission reduction not quantified but air quality is expected to improve.
Salford Metropolitan Borough Council_8	Cycle parking facilities (E7)	Cycle parking facilities	Traffic planning and management: Encouragement of shift of transport modes	Implementation	Start date: 2014 Expected end date: 2030 Spatial scale: Whole Agglomeration Source affected: Transport Indicator: N/A Target emissions reduction: Emission reduction not quantified but air quality is expected to improve.
Salford Metropolitan Borough Council_9	Walking and Cycling Strategies (AQ3)	Cyclist Awareness scheme	Traffic planning and management: Encouragement of shift of transport modes	Implementation	Start date: 2013 Expected end date: 2030 Spatial scale: Whole Agglomeration Source affected: Transport Indicator: N/A Target emissions reduction: Emission reduction not quantified but air quality is expected to improve.
Salford Metropolitan Borough Council_10	Walking / Cycling (E7)	Cycle Centre at Salford Quays	Traffic planning and management: Expansion of bicycle and pedestrian infrastructure	Implementation	Start date: 2012 Expected end date: 2015 Spatial scale: Whole Agglomeration Source affected: Transport Indicator: N/A Target emissions reduction: Emission reduction not quantified but air quality is expected to improve.
Salford Metropolitan Borough Council_11	Walking / Cycling (E7)	Cycle Routes to Salford Quays	Traffic planning and management: Expansion of bicycle and pedestrian infrastructure	Implementation	Start date: 2012 Expected end date: 2030 Spatial scale: Whole Agglomeration Source affected: Transport Indicator: N/A Target emissions reduction: Emission reduction not quantified but air quality is expected to improve.

Measure code	Description	Focus	Classification	Status	Other information
Salford Metropolitan Borough Council_12	Walking / Cycling (E7)	Irwell River Park	Traffic planning and management: Expansion of bicycle and pedestrian infrastructure	Implementation	Start date: 2014 Expected end date: 2014 Spatial scale: Whole town or city Source affected: Transport Indicator: N/A Target emissions reduction: Emission reduction not quantified but air quality is expected to improve.
Salford Metropolitan Borough Council_13	Walking / Cycling (E7)	Promote cycle forum	Public information and Education: Other mechanisms	Implementation	Start date: 2008 Expected end date: 2030 Spatial scale: Whole town or city Source affected: Transport Indicator: N/A Target emissions reduction: Emission reduction not quantified but air quality is expected to improve.
Salford Metropolitan Borough Council_14	Walking / Cycling (E7)	Salford Cycle strategy / Cycle Network Development Plan	Traffic planning and management: Encouragement of shift of transport modes	Implementation	Start date: 2013 Expected end date: 2015 Spatial scale: Whole town or city Source affected: Transport Indicator: N/A Target emissions reduction: Emission reduction not quantified but air quality is expected to improve.
Salford Metropolitan Borough Council_15	AQ4 Safe Routes to School and School Travel	Encourage schools to develop Travel Plans	Traffic planning and management: Encouragement of shift of transport modes	Implementation	Start date: 2010 Expected end date: 2010 Spatial scale: Whole Agglomeration Source affected: Transport Indicator: N/A Target emissions reduction: Emission reduction not quantified but air quality is expected to improve.
Salford Metropolitan Borough Council_16	Walking Cycling	Educate pupils on travel options	Traffic planning and management: Encouragement of shift of transport modes	Implementation	Start date: 2014 Expected end date: 2030 Spatial scale: Whole Agglomeration Source affected: Transport Indicator: N/A Target emissions reduction: Emission reduction not quantified but air quality is expected to improve.
Salford Metropolitan Borough Council_17	Green Travel Plans	Develop and co-ordinate Green Travel Plans within Salford.	Traffic planning and management: Encouragement of shift of transport modes	Implementation	Start date: 2006 Expected end date: 2030 Spatial scale: Whole Agglomeration Source affected: Transport Indicator: N/A Target emissions reduction: Emission reduction not quantified but air quality is expected to improve.

Measure code	Description	Focus	Classification	Status	Other information
Salford Metropolitan Borough Council_18	Green Travel Plans	Media City	Traffic planning and management: Encouragement of shift of transport modes	Implementation	Start date: 2007 Expected end date: 2030 Spatial scale: Whole Agglomeration Source affected: Transport Indicator: 45% of peak hour trips by none car mode. (ref) Target emissions reduction: Emission reduction not quantified but air quality is expected to improve.
Salford Metropolitan Borough Council_19	Salford Green Wheels	Implementation of sustainable travel incentives for staff	Traffic planning and management: Encouragement of shift of transport modes	Implementation	Start date: 2014 Expected end date: 2030 Spatial scale: Whole Agglomeration Source affected: Transport Indicator: N/A Target emissions reduction: Reduction in business mileage and associated emissions
Salford Metropolitan Borough Council_20	Salford Car Club	Implementation of car club	Traffic planning and management: Encouragement of shift of transport modes	Implementation	Start date: 2014 Expected end date: 2030 Spatial scale: Whole Agglomeration Source affected: Transport Indicator: N/A Target emissions reduction: Reduction in business mileage and associated emissions
Salford Metropolitan Borough Council_21	Smart Motorways. (AQ6)	Smart Motorways Highways Agency. Managed Motorways	Traffic planning and management: Other measure	Implementation	Start date: 2014 Expected end date: 2025 Spatial scale: Whole Agglomeration Source affected: Transport Indicator: N/A Target emissions reduction: N/A
Salford Metropolitan Borough Council_22	Traffic Management Plans (AQ7)	Crescent / Chapel St Traffic Calming master plan	Traffic planning and management: Encouragement of shift of transport modes	Implementation	Start date: 2012 Expected end date: 2013 Spatial scale: Whole Agglomeration Source affected: Transport Indicator: N/A Target emissions reduction: Emission reduction not quantified but air quality is expected to improve.
Salford Metropolitan Borough Council_23	Promoting Travel Alternatives	Promoting the extension of the Metrolink, quality bus corridors and improvements to rail and bus facilities.	Traffic planning and management: Encouragement of shift of transport modes	Implementation	Start date: 2011 Expected end date: 2012 Spatial scale: Whole Agglomeration Source affected: Transport Indicator: Passenger patronage Target emissions reduction: Emission reduction not quantified but air quality is expected to improve.

Measure code	Description	Focus	Classification	Status	Other information
Salford Metropolitan Borough Council_24	Development Plans (UDP/ LDF) AQ8	Development of Salford's Local Plan	Other measure: Other measure	Implementation	Start date: 2014 Expected end date: 2012 Spatial scale: Whole town or city Source affected: Transport Indicator: N/A Target emissions reduction: Emission reduction not quantified but air quality is expected to improve.
Salford Metropolitan Borough Council_25	Development Plans (UDP/ LDF) (AQ8)	Promoting mixed use development	Other measure: Other measure	Implementation	Start date: 2004 Expected end date: 2016 Spatial scale: Whole town or city Source affected: Transport Indicator: N/A Target emissions reduction: Emission reduction not quantified but air quality is expected to improve.
Salford Metropolitan Borough Council_26	AQ8 Development Plans (UDP/ LDF)	Major development proposals to demonstrate how they will minimise greenhouse gas emissions.	Other measure: Other measure	Implementation	Start date: 2008 Expected end date: 2014 Spatial scale: Whole town or city Source affected: Transport Indicator: N/A Target emissions reduction: Emission reduction not quantified but air quality is expected to improve.
Salford Metropolitan Borough Council_27	Development Plans (UDP/ LDF) (AQ8)	Promote sustainable freight and passenger movements using, where feasible, more rail or the Manchester Ship Canal.	Traffic planning and management: Encouragement of shift of transport modes	Implementation	Start date: 2013 Expected end date: 2020 Spatial scale: Whole Agglomeration Source affected: Transport Indicator: N/A Target emissions reduction: Emission reduction not quantified but air quality is expected to improve.
Salford Metropolitan Borough Council_28	Development Plans (UDP/ LDF) (AQ8)	Air Quality Assessments (AQA) for planning applications	Other measure: Other measure	Implementation	Start date: 2014 Expected end date: 2030 Spatial scale: Whole Agglomeration Source affected: Transport Indicator: N/A Target emissions reduction: Emission reduction not quantified but air quality is expected to improve.
Salford Metropolitan Borough Council_29	Energy Efficiency (AQ9)	Schools Energy Awareness Programme	Low emission fuels for stationary and mobile sources: Other measure	Implementation	Start date: 2014 Expected end date: 2030 Spatial scale: Whole Agglomeration Source affected: Commercial and residential sources Indicator: N/A Target emissions reduction: Emission reduction not quantified but air quality is expected to improve.

Measure code	Description	Focus	Classification	Status	Other information
Salford Metropolitan Borough Council_30	Energy Efficiency (AQ9)	Environmental Stewardship Initiative. Improve energy usage in Council buildings, schools, and recreational centres.	Low emission fuels for stationary and mobile sources: Other measure	Implementation	Start date: 2014 Expected end date: 2030 Spatial scale: Whole Agglomeration Source affected: Commercial and residential sources Indicator: N/A Target emissions reduction: Emission reduction not quantified but air quality is expected to improve.
Salford Metropolitan Borough Council_31	Energy Efficiency(AQ9)	Local Authority Carbon Management Programme	Low emission fuels for stationary and mobile sources: Other measure	Implementation	Start date: 2014 Expected end date: 2030 Spatial scale: Whole Agglomeration Source affected: Commercial and residential sources Indicator: N/A Target emissions reduction: Emission reduction not quantified but air quality is expected to improve.
Salford Metropolitan Borough Council_32	Energy Efficiency (AQ9)	Energy Performance in Building Directive	Low emission fuels for stationary and mobile sources: Other measure	Implementation	Start date: 2014 Expected end date: 2030 Spatial scale: Whole Agglomeration Source affected: Commercial and residential sources Indicator: N/A Target emissions reduction: Emission reduction not quantified but air quality is expected to improve.
Salford Metropolitan Borough Council_33	Energy Efficiency(AQ9)	Carbon Reduction Commitment Energy Efficiency Scheme	Low emission fuels for stationary and mobile sources: Other measure	Implementation	Start date: 2014 Expected end date: 2030 Spatial scale: Whole Agglomeration Source affected: Commercial and residential sources Indicator: N/A Target emissions reduction: Emission reduction not quantified but air quality is expected to improve.
Salford Metropolitan Borough Council_34	Energy Efficiency (AQ9)	Greenhouse Gas Emissions (Successor to N1185)	Low emission fuels for stationary and mobile sources: Other measure	Implementation	Start date: 2014 Expected end date: 2030 Spatial scale: Whole Agglomeration Source affected: Commercial and residential sources Indicator: N/A Target emissions reduction: N/A

Measure code	Description	Focus	Classification	Status	Other information
Salford Metropolitan Borough Council_36	Energy Efficiency (AQ9)	Home Energy Strategy	Low emission fuels for stationary and mobile sources: Other measure	Implementation	Start date: 2014 Expected end date: 2016 Spatial scale: Whole Agglomeration Source affected: Commercial and residential sources Indicator: N/A Target emissions reduction: Emission reduction not quantified but air quality is expected to improve.
Salford Metropolitan Borough Council_37	Energy Efficiency (AQ9)	Home Energy Conservation Act (HECA) Further Report	Low emission fuels for stationary and mobile sources: Other measure	Implementation	Start date: 2014 Expected end date: 2030 Spatial scale: Whole Agglomeration Source affected: Commercial and residential sources Indicator: Department for Business, Energy and Industrial Strategy (BEIS) Statistics Target emissions reduction: Emission reduction not quantified but air quality is expected to improve.
Salford Metropolitan Borough Council_38	Energy Efficiency (AQ9)	Home insulation schemes to reduce energy consumption	Low emission fuels for stationary and mobile sources: Other measure	Implementation	Start date: 2014 Expected end date: 2030 Spatial scale: Whole Agglomeration Source affected: Commercial and residential sources Indicator: Number of homes insulated Target emissions reduction: Emission reduction not quantified but air quality is expected to improve.
Salford Metropolitan Borough Council_39	Public Awareness / exposure	Publish live air quality information with health based index and historical results	Public information and Education: Internet	Implementation	Start date: 2014 Expected end date: 2030 Spatial scale: Whole Agglomeration Source affected: Transport Indicator: Visitors to site Target emissions reduction: Emission reduction not quantified
Salford Metropolitan Borough Council_40	Public Awareness / exposure	Emission Inventory	Public information and Education: Internet	Implementation	Start date: 2014 Expected end date: 2015 Spatial scale: Whole Agglomeration Source affected: Commercial and residential sources Indicator: N/A Target emissions reduction: N/A

Measure code	Description	Focus	Classification	Status	Other information
Salford Metropolitan Borough Council_41	Public Awareness / exposure	Review and Assessment (AQ modelling)	Public information and Education: Internet	Implementation	Start date: 2014 Expected end date: 2030 Spatial scale: Whole Agglomeration Source affected: Commercial and residential sources Indicator: Regular assessment of local air quality Target emissions reduction: Emission reduction not quantified. Local hotspots identified by AQMA, enabling stricter assessment of development towards lower emissions
Salford Metropolitan Borough Council_42	Public Awareness	Develop air quality information on the internet.	Public information and Education: Internet	Implementation	Start date: 2014 Expected end date: 2030 Spatial scale: Whole agglomeration Source affected: Transport Indicator: Visits to webpage Target emissions reduction: N/A
Salford Metropolitan Borough Council_43	Cleaner Vehicles (AQ11)	Refuse vehicles replacement program .	Other measure: Other measure	Implementation	Start date: 2014 Expected end date: 2013 Spatial scale: Whole town or city Source affected: Transport Indicator: Fleet EURO standards composition Target emissions reduction: Not estimated but air quality improvements are expected.
Salford Metropolitan Borough Council_44	Eco Driving (AQ11)	Better Driving Skills	Other measure: Other measure	Implementation	Start date: 2014 Expected end date: 2014 Spatial scale: Whole town or city Source affected: Transport Indicator: Lower fuel use and reduced emissions Target emissions reduction: Not estimated but air quality improvements are expected.
Salford Metropolitan Borough Council_45	Low Emission Vehicles (AQ11)	Electric Vehicles	Public procurement: Other measure	Other	Start date: 2014 Expected end date: 2030 Spatial scale: Whole town or city Source affected: Transport Indicator: N/A Target emissions reduction: Not estimated but air quality improvements are expected.

Measure code	Description	Focus	Classification	Status	Other information
Salford Metropolitan Borough Council_46	Green Space Development and Use(AQ13)	Tree planting in urban areas and open spaces to improve environment.	Traffic planning and management: Encouragement of shift of transport modes	Implementation	Start date: 2014 Expected end date: 2030 Spatial scale: Whole town or city Source affected: Transport Indicator: No of trees planted Target emissions reduction: Not estimated but air quality improvements are expected.
Salford Metropolitan Borough Council_47	Environmental Protection (AQ14)	Prevent and minimise emissions to air of smoke and dust from garden bonfires, construction, wood burners and advice to local residents.	Other measure: Other measure	Implementation	Start date: 2014 Expected end date: 2030 Spatial scale: Whole town or city Source affected: Commercial and residential sources Indicator: N/A Target emissions reduction: Not known but air quality improvements are expected.
Salford Metropolitan Borough Council_48	Industrial Controls (AQ15)	Assessment and Inspections of installations under IPPC	Permit systems and economic instruments: Other measure	Implementation	Start date: 2014 Expected end date: 2030 Spatial scale: Whole town or city Source affected: Industry including heat and power production Indicator: Completion of inspections Target emissions reduction: Air quality improvements
Salford Metropolitan Borough Council_49	Promote low Emission Vehicles	No of Charge Points	Public procurement: Other measure	Implementation	Start date: 2014 Expected end date: 2015 Spatial scale: Whole Agglomeration Source affected: Transport Indicator: No of Charge Points (CP) and usage Target emissions reduction: Not quantified but improvements in air quality expected.
Salford Metropolitan Borough Council_50	Staff Business Travel	Electric Vehicle Scheme	Public procurement: Other measure	Implementation	Start date: 2014 Expected end date: 2030 Spatial scale: Whole Agglomeration Source affected: Transport Indicator: Distanced travelled in electric vehicles as % of total business distance Target emissions reduction: Not quantified but improvements in air quality expected.

Measure code	Description	Focus	Classification	Status	Other information
Salford Metropolitan Borough Council_51	Cycling Cities	Increase Cycling trips	Traffic planning and management: Encouragement of shift of transport modes	Implementation	Start date: 2014 Expected end date: 2030 Spatial scale: Whole Agglomeration Source affected: Transport Indicator: 10% trips by cycle in 2015 Target emissions reduction: Not quantified but improvements in air quality expected.
Salford Metropolitan Borough Council_52	Growth Deal 2	Cycling/ Pedestrian infrastructure	Traffic planning and management: Encouragement of shift of transport modes	Implementation	Start date: 2015 Expected end date: 2017 Spatial scale: Whole Agglomeration Source affected: Transport Indicator: Increase in footfall and cycling Target emissions reduction: Not quantified but improvements in air quality expected.
Salford Metropolitan Borough Council_53	Growth Deal 2 (Major works)	Cycling/ Pedestrian infrastructure	Traffic planning and management: Encouragement of shift of transport modes	Implementation	Start date: 2015 Expected end date: 2017 Spatial scale: Whole Agglomeration Source affected: Transport Indicator: Increase in footfall and cycling Target emissions reduction: Not quantified but improvements in air quality expected.
Salford Metropolitan Borough Council_54	Broadway Link	N/A	Traffic planning and management: Encouragement of shift of transport modes	Implementation	Start date: 2012 Expected end date: 2030 Spatial scale: Whole town or city Source affected: Transport Indicator: Reduce volumes of traffic on Eccles New Road. Target emissions reduction: Complete and open to traffic.
Salford Metropolitan Borough Council_55	Driver Awareness campaign	Driver Awareness campaign	Other measure: Other measure	Implementation	Start date: 2012 Expected end date: 2030 Spatial scale: Whole Agglomeration Source affected: Transport Indicator: N/A Target emissions reduction: Not quantified but improvements in air quality expected.

Measure code	Description	Focus	Classification	Status	Other information
Salford Metropolitan Borough Council_56	Online Cycle Route Journey Planner	Online Cycle Route Journey Planner	Public information and Education: Internet	Implementation	Start date: 2014 Expected end date: 2030 Spatial scale: Whole Agglomeration Source affected: Transport Indicator: N/A Target emissions reduction: Not quantified but improvements in air quality expected.
Salford Metropolitan Borough Council_57	'Walkit' online pedestrian route journey planner	'Walkit' online pedestrian route journey planner	Public information and Education: Internet	Implementation	Start date: 2010 Expected end date: 2030 Spatial scale: Whole Agglomeration Source affected: Transport Indicator: N/A Target emissions reduction: Not quantified but improvements in air quality expected.
Salford Metropolitan Borough Council_58	Safer Cycle networks	Safer Cycle networks	Traffic planning and management: Encouragement of shift of transport modes	Implementation	Start date: 2012 Expected end date: 2030 Spatial scale: Whole Agglomeration Source affected: Transport Indicator: N/A Target emissions reduction: Not quantified but improvements in air quality expected.
Salford Metropolitan Borough Council_59	Safer Cycling	Safer Cycling	Traffic planning and management: Encouragement of shift of transport modes	Implementation	Start date: 2012 Expected end date: 2030 Spatial scale: Whole Agglomeration Source affected: Transport Indicator: N/A Target emissions reduction: Not quantified but improvements in air quality expected.
Salford Metropolitan Borough Council_60	School Cycle Shelters	School Cycle Shelters	Traffic planning and management: Encouragement of shift of transport modes	Implementation	Start date: 2012 Expected end date: 2030 Spatial scale: Whole Agglomeration Source affected: Transport Indicator: N/A Target emissions reduction: Not quantified but improvements in air quality expected.
Salford Metropolitan Borough Council_61	Walk to school initiatives promoted through travel plans	Walk to school initiatives promoted through travel plans	Traffic planning and management: Encouragement of shift of transport modes	Implementation	Start date: 2013 Expected end date: 2030 Spatial scale: Whole Agglomeration Source affected: Transport Indicator: N/A Target emissions reduction: Not quantified but improvements in air quality expected.

Measure code	Description	Focus	Classification	Status	Other information
Salford Metropolitan Borough Council_62	Greater Manchester Workplace Strategy: implementation of Green Travel Plans.	Greater Manchester Workplace Strategy: implementation of Green Travel Plans.	Traffic planning and management: Encouragement of shift of transport modes	Implementation	Start date: 2010 Expected end date: 2030 Spatial scale: Whole Agglomeration Source affected: Transport Indicator: N/A Target emissions reduction: Not quantified but improvements in air quality expected.
Salford Metropolitan Borough Council_63	Salford Travel Partnership (STP)	Salford Travel Partnership (STP)	Traffic planning and management: Encouragement of shift of transport modes	Implementation	Start date: 2014 Expected end date: 2030 Spatial scale: Whole Agglomeration Source affected: Transport Indicator: N/A Target emissions reduction: Not quantified but improvements in air quality expected.
Salford Metropolitan Borough Council_64	NOx Barrier	NOx Barrier	Other measure: Other measure	Other	Start date: 2009 Expected end date: 2030 Spatial scale: Local Source affected: Transport Indicator: N/A Target emissions reduction: N/a
Salford Metropolitan Borough Council_65	Metro Link extension.	Metrolink extension to Media City due to be operational by 2010.	Traffic planning and management: Encouragement of shift of transport modes	Implementation	Start date: 2012 Expected end date: 2030 Spatial scale: Whole Agglomeration Source affected: Transport Indicator: N/A Target emissions reduction: Not quantified but improvements in air quality expected.
Salford Metropolitan Borough Council_66	Energy Accreditation	Energy Accreditation	Other measure: Other measure	Other	Start date: 2011 Expected end date: 2011 Spatial scale: Whole Agglomeration Source affected: Commercial and residential sources Indicator: N/A Target emissions reduction: N/a
Salford Metropolitan Borough Council_67	Alternative Fuels Trial	Lowering vehicle emissions from the local authority fleet	Other measure: Other measure	Implementation	Start date: 2017 Expected end date: 2017 Spatial scale: Local Source affected: Transport Indicator: Emissions results from alternative fuel trial Target emissions reduction: Emission reduction not quantified as yet but air quality is expected to improve.

Measure code	Description	Focus	Classification	Status	Other information
Salford Metropolitan Borough Council_68	Park and Ride Scheme	Salford A580 Park and Ride Scheme	Traffic planning and management: Encouragement of shift of transport modes	Implementation	Start date: 2011 Expected end date: 2012 Spatial scale: Whole Agglomeration Source affected: Transport Indicator: Patronage Target emissions reduction: Emission reduction not quantified but air quality is expected to improve.
Stockport Metropolitan Borough Council_1	Delivery of SEMMMS Relief Road	Reduction of use of other roads and so emissions on those roads in AQMA to decrease.	Traffic planning and management: Other measure	Implementation	Start date: 2015 Expected end date: 2017 Spatial scale: Local Source affected: Transport Indicator: N/A Target emissions reduction: Emissions will be displaced away from receptor points within the AQMA along the A6 in the south of Stockport. Including removal of some freight off local road network.
Stockport Metropolitan Borough Council_2	Walking promotion	Increase knowledge of opportunities to walk and so encourage walking.	Public information and Education: Other mechanisms	Implementation	Start date: 2008 Expected end date: 2030 Spatial scale: Local Source affected: Transport Indicator: N/A Target emissions reduction: <0.5%
Stockport Metropolitan Borough Council_3	Promotion of uptake of cleaner fuels: Emission standards through A6 Quality Bus Partnership	N/A	Traffic planning and management: Improvement of public transport	Implementation	Start date: 2012 Expected end date: 2017 Spatial scale: Local Source affected: Transport Indicator: N/A Target emissions reduction: 29% reduction in NOx and 44% reduction in primary NO2 emissions from 192 and 191 bus services. This takes account of sampled bus speeds at ATC sites. This is equivalent to approx. 6.4% and 6.8% reduction in total road traffic emissions of NOx and primary NO2 respectively.
Stockport Metropolitan Borough Council_4	Cycling promotion	Promoting use of cycles for Journeys under 5km	Public information and Education: Leaflets	Implementation	Start date: 2008 Expected end date: 2030 Spatial scale: Local Source affected: Transport Indicator: N/A Target emissions reduction: <0.5%

Measure code	Description	Focus	Classification	Status	Other information
Stockport Metropolitan Borough Council_5	Review of Stockport Sustainable Travel Plan	Reduction of single occupancy vehicle use	Traffic planning and management: Encouragement of shift of transport modes	Implementation	Start date: 2007 Expected end date: 2017 Spatial scale: Local Source affected: Transport Indicator: N/A Target emissions reduction: Action will have a positive effect on air quality but it is difficult to measure or there is no data
Stockport Metropolitan Borough Council_6	School Travel Plans	Implement and facilitate travel plans for Schools.	Traffic planning and management: Encouragement of shift of transport modes	Implementation	Start date: 2008 Expected end date: 2030 Spatial scale: Local Source affected: Transport Indicator: N/A Target emissions reduction: <0.5%However, localised air quality improvements at school entrances will be significant
Stockport Metropolitan Borough Council_7	Enforcement of Part A and B Industrial processes.	N/A	Other measure: Other measure	Implementation	Start date: 2008 Expected end date: 2030 Spatial scale: Local Source affected: Industry including heat and power production Indicator: N/A Target emissions reduction: Action will have a positive effect on air quality but it is difficult to measure or there is no data
Stockport Metropolitan Borough Council_8	Promotion of uptake of cleaner fuels: Plugged in Places	Provision of Electric charging points	Public procurement: Other measure	Implementation	Start date: 2013 Expected end date: 2013 Spatial scale: Local Source affected: Transport Indicator: N/A Target emissions reduction: Market forecasts suggest that there will be no measurable reductions from electric vehicle promotion in the short term. However, this is a fundamental stage in the long term strategy to enable a shift away from Internal Combustion Engine based technology, and ultimately decarbonisation of road transport
Stockport Metropolitan Borough Council_9	Integrated Transport Corridors (ITC)	Provision of improved bus walking and cycling routes on key corridors.	Traffic planning and management: Improvement of public transport	Other	Start date: 2008 Expected end date: 2011 Spatial scale: Local Source affected: Transport Indicator: N/A Target emissions reduction: N/A

Measure code	Description	Focus	Classification	Status	Other information
Stockport Metropolitan Borough Council_10	Use of cleaner and alternative fuels by council fleet.	Continue to reduce air quality effecting emissions associated with the Council's fleet.	Other measure: Other measure	Implementation	Start date: 2008 Expected end date: 2030 Spatial scale: Local Source affected: Transport Indicator: N/A Target emissions reduction: N/A
Stockport Metropolitan Borough Council_11	Implement Travel Plans and Smarter Choice Initiatives	Help local businesses produce Travel Plans	Public procurement: Other measure	Planning	Start date: 2008 Expected end date: 2030 Spatial scale: Local Source affected: Transport Indicator: N/A Target emissions reduction: N/A
Stockport Metropolitan Borough Council_12	Tree management strategy to be developed for Mar 2009.	N/A	Other measure: Other measure	Implementation	Start date: 2009 Expected end date: 2030 Spatial scale: Local Source affected: Other, please specify Indicator: Tree cover has not declined in the Borough and is deemed to be at an adequate level. Target emissions reduction: N/A
Stockport Metropolitan Borough Council_13	Safer Routes to School (20mph speed limit zones)	Improvement of safety of walking and cycling near schools including 20mph zones when appropriate.	Traffic planning and management: Reduction of speed limits and control	Implementation	Start date: 2008 Expected end date: 2030 Spatial scale: Local Source affected: Transport Indicator: N/A Target emissions reduction: N/A
Stockport Metropolitan Borough Council_14	Environmental Protection (AQ14)	Prevent and minimise emissions to air of smoke and dust from garden bonfires, construction wood burners and advice to local residents.	Other measure: Other measure	Implementation	Start date: 2008 Expected end date: 2030 Spatial scale: Local Source affected: Commercial and residential sources Indicator: N/A Target emissions reduction: Not known but air quality improvements are expected.
Stockport Metropolitan Borough Council_15	Industrial Controls (AQ15)	Assessment and Inspections of installations under IPPC	Permit systems and economic instruments: Other measure	Implementation	Start date: 2008 Expected end date: 2030 Spatial scale: Local Source affected: Industry including heat and power production Indicator: Completion of inspections Target emissions reduction: Air quality improvements

Measure code	Description	Focus	Classification	Status	Other information
Stockport Metropolitan Borough Council_16	Sustainable Transport Supplementary Planning Document	Documents advise developers on the ways to implement transport options in their development.	Other measure: Other measure	Implementation	Start date: 2008 Expected end date: 2008 Spatial scale: Local Source affected: Transport Indicator: N/A Target emissions reduction: N/A
Stockport Metropolitan Borough Council_17	Rights of Way Improvement Plan	Long term plan to improve PROW to increase usage for recreational and utility.	Other measure: Other measure	Implementation	Start date: 2007 Expected end date: 2017 Spatial scale: Local Source affected: Transport Indicator: N/A Target emissions reduction: N/A
Stockport Metropolitan Borough Council_18	Stockport Interchange	Encourage use of public transport	Traffic planning and management: Improvement of public transport	Planning	Start date: 2014 Expected end date: 2018 Spatial scale: Local Source affected: Transport Indicator: Increased bus patronage Target emissions reduction: N/A
Stockport Metropolitan Borough Council_19	Increased pedestrianisation of Town Centre Core	Encourage use of Public Transport Walking and Cycling	Traffic planning and management: Encouragement of shift of transport modes	Implementation	Start date: 2014 Expected end date: 2017 Spatial scale: Local Source affected: Transport Indicator: N/A Target emissions reduction: N/A
Stockport Metropolitan Borough Council_20	Improved walking and cycling opportunities in the Borough	Reduce severance, implement new routes and improve existing routes to encourage walking and cycling	Traffic planning and management: Expansion of bicycle and pedestrian infrastructure	Implementation	Start date: 2008 Expected end date: 2030 Spatial scale: Local Source affected: Transport Indicator: N/A Target emissions reduction: Increased number of walking and cycling users of the network.
Stockport Metropolitan Borough Council_21	Encouraging Employment opportunities near public transport corridors.	Encourage public transport use	Other measure: Other measure	Implementation	Start date: 2014 Expected end date: 2018 Spatial scale: Local Source affected: Transport Indicator: N/A Target emissions reduction: Increased public transport use
Stockport Metropolitan Borough Council_22	Station Travel Planning and investment via planning	Encourage rail use and active travel to rail stations	Traffic planning and management: Improvement of public transport	Implementation	Start date: 2007 Expected end date: 2018 Spatial scale: Local Source affected: Transport Indicator: N/A Target emissions reduction: Increased number of walking and cycling users of the network.

Measure code	Description	Focus	Classification	Status	Other information
Stockport Metropolitan Borough Council_23	Improvements to District and Local Centres to encourage people to Shop Local/ Access them by Walking and Cycling	Encourage use of Public Transport Walking and Cycling	Traffic planning and management: Other measure	Implementation	Start date: 2007 Expected end date: 2030 Spatial scale: Local Source affected: Transport Indicator: N/A Target emissions reduction: Increased number of walking and cycling users of the network. Increase local centre footfall.
Tameside Metropolitan Borough Council_1	Metrolink Eastern Extension	N/A	Traffic planning and management: Improvement of public transport	Evaluation	Start date: 2013 Expected end date: 2014 Spatial scale: Whole town or city Source affected: Transport Indicator: N/A Target emissions reduction: N/A
Tameside Metropolitan Borough Council_2	A671 A627 Rochdale Oldham Ashton-under-Lyne Hyde Quality Bus Corridor and A627 A560 Hyde Stockport Quality Bus Corridor.	N/A	Traffic planning and management: Improvement of public transport	Evaluation	Start date: 2009 Expected end date: 2014 Spatial scale: Local Source affected: Transport Indicator: N/A Target emissions reduction: N/A
Tameside Metropolitan Borough Council_3	A635 Manchester/Ashton-under-Lyne /Stalybridge Quality Bus Corridor	N/A	Traffic planning and management: Improvement of public transport	Evaluation	Start date: 2009 Expected end date: 2014 Spatial scale: Local Source affected: Transport Indicator: N/A Target emissions reduction: N/A
Tameside Metropolitan Borough Council_4	A57 Manchester/Denton/Hyde Quality Bus Corridor.	N/A	Traffic planning and management: Improvement of public transport	Evaluation	Start date: 2010 Expected end date: 2014 Spatial scale: Local Source affected: Transport Indicator: N/A Target emissions reduction: N/A
Tameside Metropolitan Borough Council_5	Ashton Northern Bypass	N/A	Traffic planning and management: Other measure	Evaluation	Start date: 2012 Expected end date: 2014 Spatial scale: Local Source affected: Transport Indicator: N/A Target emissions reduction: N/A
Tameside Metropolitan Borough Council_6	Examine the potential for Metrolink 'Park and Ride' at Ashton Moss	N/A	Traffic planning and management: Improvement of public transport	Evaluation	Start date: 2012 Expected end date: 2014 Spatial scale: Whole town or city Source affected: Transport Indicator: N/A Target emissions reduction: N/A

Measure code	Description	Focus	Classification	Status	Other information
Tameside Metropolitan Borough Council_7	A57/A628 Mottram to Tintwistle Bypass and Glossop Spur Local Road Element.	N/A	Traffic planning and management: Other measure	Preparation	Start date: 2009 Expected end date: 2020 Spatial scale: Local Source affected: Transport Indicator: N/A Target emissions reduction: N/A
Tameside Metropolitan Borough Council_8	SEMMMS 'transport change' measures	N/A	Traffic planning and management: Encouragement of shift of transport modes	Evaluation	Start date: 2006 Expected end date: 2014 Spatial scale: Local Source affected: Transport Indicator: N/A Target emissions reduction: N/A
Tameside Metropolitan Borough Council_9	Improved pedestrian/cycling environment	N/A	Traffic planning and management: Encouragement of shift of transport modes	Evaluation	Start date: 2009 Expected end date: 2014 Spatial scale: Local Source affected: Transport Indicator: N/A Target emissions reduction: N/A
Tameside Metropolitan Borough Council_10	Home Zones	N/A	Traffic planning and management: Reduction of speed limits and control	Evaluation	Start date: 2009 Expected end date: 2014 Spatial scale: Local Source affected: Transport Indicator: N/A Target emissions reduction: N/A
Tameside Metropolitan Borough Council_11	Develop local authority travel plan	N/A	Traffic planning and management: Encouragement of shift of transport modes	Evaluation	Start date: 2009 Expected end date: 2014 Spatial scale: Local Source affected: Transport Indicator: N/A Target emissions reduction: N/A
Tameside Metropolitan Borough Council_12	Facilitate company travel plans	N/A	Traffic planning and management: Encouragement of shift of transport modes	Evaluation	Start date: 2009 Expected end date: 2014 Spatial scale: Local Source affected: Transport Indicator: N/A Target emissions reduction: N/A
Tameside Metropolitan Borough Council_13	Facilitate school travel plans.	N/A	Traffic planning and management: Encouragement of shift of transport modes	Evaluation	Start date: 2009 Expected end date: 2014 Spatial scale: Local Source affected: Transport Indicator: N/A Target emissions reduction: N/A
Tameside Metropolitan Borough Council_14	Investigate feasibility of LPG / alternative fuels for Council fleet	N/A	Other measure: Other measure	Other	Start date: 2009 Expected end date: 2014 Spatial scale: Local Source affected: Transport Indicator: N/A Target emissions reduction: N/A

Measure code	Description	Focus	Classification	Status	Other information
Tameside Metropolitan Borough Council_15	Ensure that the Councils vehicle fleet is properly maintained and operating efficiently	N/A	Other measure: Other measure	Other	Start date: 2009 Expected end date: 2014 Spatial scale: Local Source affected: Transport Indicator: N/A Target emissions reduction: N/A
Trafford Metropolitan Borough Council_1	Use of cleaner and alternative fuels by council fleet	N/A	Other measure: Other measure	Implementation	Start date: 2003 Expected end date: 2014 Spatial scale: Local Source affected: Other, please specify Indicator: Reduce NOx, PM10 Target emissions reduction: N/A
Trafford Metropolitan Borough Council_2	Sustainable School Travel.	Promoting travel alternatives	Traffic planning and management: Encouragement of shift of transport modes	Implementation	Start date: 2003 Expected end date: 2015 Spatial scale: Local Source affected: Other, please specify Indicator: Reduce NOx, PM10 Target emissions reduction: N/A
Trafford Metropolitan Borough Council_3	Encourage local employers and industrial park organisations to use alternative fuels for vehicle fleet.	Efficiency of vehicle fleet	Other measure: Other measure	Implementation	Start date: 2003 Expected end date: 2014 Spatial scale: Local Source affected: Commercial and residential sources Indicator: Reduce NOx, PM10 Target emissions reduction: N/A
Trafford Metropolitan Borough Council_4	Work from home schemes for employees.	Travel alternatives	Other measure: Other measure	Implementation	Start date: 2010 Expected end date: 2014 Spatial scale: Local Source affected: Other, please specify Indicator: Reduce NOx, PM10 Target emissions reduction: N/A
Trafford Metropolitan Borough Council_5	Cycle parking facilities improved for staff.	Travel alternatives	Traffic planning and management: Encouragement of shift of transport modes	Implementation	Start date: 2003 Expected end date: 2014 Spatial scale: Local Source affected: Other, please specify Indicator: Reduce NOx, PM10 Target emissions reduction: N/A
Trafford Metropolitan Borough Council_6	Subsidised Public Transport for Council Employees	Travel alternatives	Traffic planning and management: Encouragement of shift of transport modes	Evaluation	Start date: 2003 Expected end date: 2014 Spatial scale: Local Source affected: Transport Indicator: Reduce NOx and PM10 Target emissions reduction: N/A

Measure code	Description	Focus	Classification	Status	Other information
Trafford Metropolitan Borough Council_7	Develop a car sharing scheme for employees	Travel alternatives	Traffic planning and management: Encouragement of shift of transport modes	Implementation	Start date: 2003 Expected end date: 2014 Spatial scale: Local Source affected: Transport Indicator: Reduce NOx and PM10 Target emissions reduction: N/A
Trafford Metropolitan Borough Council_8	Encourage main businesses within the Borough to develop green travel plans	Greener Transport	Public procurement: Other measure	Implementation	Start date: 2003 Expected end date: 2014 Spatial scale: Local Source affected: Transport Indicator: Reduce NOx and PM10 Target emissions reduction: N/A
Trafford Metropolitan Borough Council_9	Development plans-Production of a guide for assessing planning applications with regard to air quality.	Guidance	Other measure: Other measure	Implementation	Start date: 2003 Expected end date: 2014 Spatial scale: Whole agglomeration Source affected: Other, please specify Indicator: Reduce NOx and PM10 Target emissions reduction: N/A
Trafford Metropolitan Borough Council_10	Liaise with Licensing to impose conditions requiring taxis to fulfil specific emission standards.	Reducing taxi emissions	Permit systems and economic instruments: Introduction/increase of environment taxes	Implementation	Start date: 2003 Expected end date: 2014 Spatial scale: Whole agglomeration Source affected: Transport Indicator: Reduce NOx and PM10 Target emissions reduction: N/A
Trafford Metropolitan Borough Council_11	Public awareness exercises	Public information	Public information and Education: Internet	Implementation	Start date: 2003 Expected end date: 2014 Spatial scale: Whole agglomeration Source affected: Commercial and residential sources Indicator: Reduce NOx and PM10 Target emissions reduction: N/A
Trafford Metropolitan Borough Council_12	Checking vehicle emissions in areas within the Borough. Cleaner Vehicles Campaign	Vehicle Emissions Testing	Other measure: Other measure	Implementation	Start date: 2003 Expected end date: 2011 Spatial scale: Whole agglomeration Source affected: Transport Indicator: Reduce NOx, PM10 Target emissions reduction: N/A
Wigan Metropolitan Borough Council_1	Freight Air Quality Best Practice Guidance	Promote and Develop Freight Air Quality Best Practice Guidance for circulation amongst HGV and fleet operators	Traffic planning and management: Freight transport measure	Implementation	Start date: 2014 Expected end date: 2030 Spatial scale: Whole Agglomeration Source affected: Transport Indicator: Requires further investigation of impacts Target emissions reduction: N/A

Measure code	Description	Focus	Classification	Status	Other information
Wigan Metropolitan Borough Council_2	GM Drivers Freight Map	Produce GM Freight routes map for drivers	Traffic planning and management: Freight transport measure	Implementation	Start date: 2014 Expected end date: 2030 Spatial scale: Whole Agglomeration Source affected: Transport Indicator: Requires further investigation of impacts Target emissions reduction: N/A
Wigan Metropolitan Borough Council_3	Night-time deliveries	Study of feasibility and dissemination to planning officers	Traffic planning and management: Freight transport measure	Implementation	Start date: 2014 Expected end date: 2030 Spatial scale: Whole Agglomeration Source affected: Transport Indicator: N/A Target emissions reduction: N/A
Wigan Metropolitan Borough Council_4	Environmental impact points for freight on the road and rail network	Identify and address key environmental impact points for freight on the road and rail network	Traffic planning and management: Freight transport measure	Implementation	Start date: 2014 Expected end date: 2030 Spatial scale: Whole Agglomeration Source affected: Transport Indicator: Requires further investigation of impacts Target emissions reduction: N/A
Wigan Metropolitan Borough Council_5	Work with bus operators to reduce bus emissions	GM-wide	Public procurement: New vehicles, including low emission vehicles	Implementation	Start date: 2014 Expected end date: 2030 Spatial scale: Whole Agglomeration Source affected: Transport Indicator: N/A Target emissions reduction: N/A
Wigan Metropolitan Borough Council_6	Bus Quality Agreements	Agreements with bus operators on minimum engine standards in particular locations, or generally	Public procurement: Other measure	Implementation	Start date: 2014 Expected end date: 2030 Spatial scale: Whole Agglomeration Source affected: Transport Indicator: N/A Target emissions reduction: N/A
Wigan Metropolitan Borough Council_7	Real Time Information	Real time information about transport direct to smart phones	Traffic planning and management: Encouragement of shift of transport modes	Implementation	Start date: 2014 Expected end date: 2030 Spatial scale: Whole Agglomeration Source affected: Transport Indicator: Reduction in car journeys Target emissions reduction: N/A
Wigan Metropolitan Borough Council_8	Public Transport Subsidies	Public subsidy of socially necessary bus services that would not otherwise be provided on a commercial basis by bus operators	Traffic planning and management: Improvement of public transport	Implementation	Start date: 2014 Expected end date: 2030 Spatial scale: Whole Agglomeration Source affected: Transport Indicator: Reduction in car journeys Target emissions reduction: N/A

Measure code	Description	Focus	Classification	Status	Other information
Wigan Metropolitan Borough Council_9	Metrolink Expansion	Expansion of the tram network (which is zero emission at the point of use), including park and ride	Traffic planning and management: Improvement of public transport	Implementation	Start date: 2014 Expected end date: 2030 Spatial scale: Whole Agglomeration Source affected: Transport Indicator: Reduction in car journeys Target emissions reduction: N/A
Wigan Metropolitan Borough Council_10	Local Sustainable Transport Fund Programme	Programme of new walk/cycle routes, cycle parking, an extensive Smarter Choices promotional campaign, measures for active traffic management (Bluetooth sensors) to reduce congestion	Traffic planning and management: Encouragement of shift of transport modes	Implementation	Start date: 2014 Expected end date: 2030 Spatial scale: Whole Agglomeration Source affected: Transport Indicator: Reduction in car journeys Target emissions reduction: N/A
Wigan Metropolitan Borough Council_11	Cycle City Ambition Grant Programme ('Velocity')	Programme of 56 kms of largely segregated cycle routes, cycle parking, cycle promotion and work with schools. Within M60 ring.	Traffic planning and management: Encouragement of shift of transport modes	Implementation	Start date: 2014 Expected end date: 2030 Spatial scale: Whole Agglomeration Source affected: Transport Indicator: Reduction in car journeys Target emissions reduction: N/A
Wigan Metropolitan Borough Council_12	Cycle City Ambition Grant ('Greater Manchester Cycle City 2025')	Expansion of original CCAG scheme above (NEW 2) to areas outside M60	Traffic planning and management: Encouragement of shift of transport modes	Implementation	Start date: 2014 Expected end date: 2030 Spatial scale: Whole Agglomeration Source affected: Transport Indicator: Reduction in car journeys Target emissions reduction: N/A
Wigan Metropolitan Borough Council_13	Better Bus Area Fund	Series of measures to improve the attractiveness of bus travel (bus priority, information, promotion)	Traffic planning and management: Improvement of public transport	Implementation	Start date: 2014 Expected end date: 2030 Spatial scale: Whole Agglomeration Source affected: Transport Indicator: Reduction in car journeys Target emissions reduction: N/A
Wigan Metropolitan Borough Council_14	Bus Priority Package	40 kms of bus priority routes linking 3 corridors(from Leigh, Middleton and Didsbury) across central Manchester to allow more through journeys. The route from Leigh includes a 7 km guided busway.	Traffic planning and management: Improvement of public transport	Implementation	Start date: 2014 Expected end date: 2030 Spatial scale: Whole Agglomeration Source affected: Transport Indicator: Reduction in car journeys Target emissions reduction: N/A
Wigan Metropolitan Borough Council_15	Trafford Park Metrolink	Metrolink extension to Trafford Park employment area and Trafford Centre sub-regional shopping centre	Traffic planning and management: Other measure	Implementation	Start date: 2014 Expected end date: 2030 Spatial scale: Whole Agglomeration Source affected: Transport Indicator: Reduction in car journeys Target emissions reduction: N/A
Wigan Metropolitan Borough Council_16	Electric Vehicle Charging Points	GM-wide	Public procurement: Other measure	Implementation	Start date: 2014 Expected end date: 2030 Spatial scale: Whole Agglomeration Source affected: Transport Indicator: N/A Target emissions reduction: N/A

Measure code	Description	Focus	Classification	Status	Other information
Wigan Metropolitan Borough Council_17	Park and Ride at rail stations	Park and ride at the following stations: Horwich (90), Cheadle Hulme (29), Guide Bridge (119), Irlam (60), Hazel Grove (100) and Hindley (28)	Traffic planning and management: Improvement of public transport	Implementation	Start date: 2014 Expected end date: 2030 Spatial scale: Whole Agglomeration Source affected: Transport Indicator: N/A Target emissions reduction: N/A
Wigan Metropolitan Borough Council_18	Wigan Integrated Transport Scheme (WITS), incorporating:- (a)Wigan Inner Relief Road (b)Westwood Park Link Road (c)Modal Hub (rail/bus interchange) (d)Saddle/Pottery Road Relief Scheme	Reduce vehicle usage	Traffic planning and management: Encouragement of shift of transport modes	Implementation	Start date: 2014 Expected end date: 2030 Spatial scale: Whole Town or City Source affected: Transport Indicator: Reduction in traffic build up and journeys Target emissions reduction: N/A
Wigan Metropolitan Borough Council_19	A5225 Wigan and Hindley Bypass and Town Centre Link Road	Tackle congestion	Traffic planning and management: Improvement of public transport	Evaluation	Start date: 2014 Expected end date: 2030 Spatial scale: Whole Agglomeration Source affected: Transport Indicator: Requires further investigation Target emissions reduction: N/A
Wigan Metropolitan Borough Council_20	Leigh Guided Busway	Better transport links	Traffic planning and management: Encouragement of shift of transport modes	Implementation	Start date: 2014 Expected end date: 2030 Spatial scale: Whole Agglomeration Source affected: Transport Indicator: Reduction in car journeys Target emissions reduction: N/A
Wigan Metropolitan Borough Council_21	Integrated Transport Capital Programme to encourage the use of public transport, cycling and walking; including:- (a)Local safety schemes (b)Safer Routes to School (c)Pedestrian and Cycle schemes	Promote public transport	Traffic planning and management: Encouragement of shift of transport modes	Evaluation	Start date: 2014 Expected end date: 2030 Spatial scale: Whole Town or City Source affected: Transport Indicator: Reduction in car journeys Target emissions reduction: N/A
Wigan Metropolitan Borough Council_22	Park and Ride	Promote public transport	Traffic planning and management: Other measure	Other	Start date: 2014 Expected end date: 2030 Spatial scale: Whole Agglomeration Source affected: Transport Indicator: Requires further investigation Target emissions reduction: N/A
Wigan Metropolitan Borough Council_23	Work place charges (Parking), including:- (a)Ashton, Leigh and Wigan PCT (b)NHS trust (c)Wigan and Leigh College (d) Wigan Council	Staff Parking	Other measure: Other measure	Evaluation	Start date: 2014 Expected end date: 2030 Spatial scale: Whole Town or City Source affected: Transport Indicator: N/A Target emissions reduction: N/A

Measure code	Description	Focus	Classification	Status	Other information
Wigan Metropolitan Borough Council_24	Wigan Cycling Strategy - Strategy adopted January 2001	Reduce vehicle usage	Other measure: Other measure	Implementation	Start date: 2014 Expected end date: 2030 Spatial scale: Whole Town or City Source affected: Transport Indicator: Requires further investigation of impacts Target emissions reduction: N/A
Wigan Metropolitan Borough Council_25	Wigan Walking Strategy - Strategy adopted August 2001	Reduce vehicle usage	Traffic planning and management: Encouragement of shift of transport modes	Implementation	Start date: 2014 Expected end date: 2030 Spatial scale: Whole Agglomeration Source affected: Transport Indicator: Requires further investigation of impacts Target emissions reduction: N/A
Wigan Metropolitan Borough Council_26	Workplace Travel Plans, Wigan Council (WC), Wigan and Leigh College(W&LC), Primary Care Trust (PCT) - including:- (a)Car Share Database(WC) (b)School Travel Plans (WC) (c)Work place travel plans (WC/PCT/W&LC) (d)Cycle lockers/shelters/ Shower facilities in Council buildings and all college sites (WC/W&LC/PCT). (e)Cycle mileage scheme (WC and PCT) (f)Loans for bicycles (WC/PCT)	Reduce vehicle usage	Traffic planning and management: Expansion of bicycle and pedestrian infrastructure	Implementation	Start date: 2014 Expected end date: 2030 Spatial scale: Whole Agglomeration Source affected: Transport Indicator: Reduction in car journeys Target emissions reduction: N/A
Wigan Metropolitan Borough Council_27	School Travel Plans, prioritised programme including:- (a) All Schools to have STP by 2010 (b) Engineering schemes linked to safe routes to schools. (c) Yellow Bus Project (d) Walking Bus Scheme	(a) School Travel Plan Strategy adopted 2002 and Steering Group formed. Target 100% by 2010 (b) Programme commenced 2001 - 5 schemes implemented at 2003/4 (c) Ongoing (Standish High School) (d) Walking Bus Scheme trialled 2002/3	Traffic planning and management: Improvement of public transport	Implementation	Start date: 2014 Expected end date: 2030 Spatial scale: Whole Town or City Source affected: Transport Indicator: N/A Target emissions reduction: N/A

Measure code	Description	Focus	Classification	Status	Other information
Wigan Metropolitan Borough Council_28	Taxis and PHVs Including - (a) Licence fee reduction for LPG vehicles (20) (b) Taxi survey (c) Review engine capacity policy (d) Review vehicle specification standard (including vehicle age) (e) Promote use of LPG/low emission vehicles (f) Taxi emissions study (g) Licence fee reduction for lower emission vehicles	N/A	Permit systems and economic instruments: Introduction/increase of environment taxes	Implementation	Start date: 2014 Expected end date: 2030 Spatial scale: Whole Agglomeration Source affected: Transport Indicator: Requires further investigation of impacts Target emissions reduction: N/A
Wigan Metropolitan Borough Council_29	Development Control Policies	UDP Policy and limited brief guidance relating to air quality and development	Other measure: Other measure	Implementation	Start date: 2014 Expected end date: 2030 Spatial scale: Whole Agglomeration Source affected: Commercial and residential sources Indicator: Requires further investigation of impacts Target emissions reduction: N/A
Wigan Metropolitan Borough Council_30	Industrial Air Pollution Control	Permitting and inspection of 89 Part B/A2 process (LA) and 10 Part A processes (EA). Local PPC inspection target indicator level :- 2005/6 - 83% 2006/7 - 100% 2007/8 - 100% 2008/9 - 100% 2009/10 - 100% 2010/11 - 100% 2011/12 - 100% 2012/13 - 100%	Public information and Education: Other mechanisms	Implementation	Start date: 2014 Expected end date: 2030 Spatial scale: Whole Town or City Source affected: Industry including heat and power production Indicator: Ongoing Target emissions reduction: N/A
Wigan Metropolitan Borough Council_31	Smoke Control Areas	Improvement in air quality	Public information and Education: Other mechanisms	Implementation	Start date: 2014 Expected end date: 2030 Spatial scale: Whole Town or City Source affected: Industry including heat and power production Indicator: Requires further investigation of impacts Target emissions reduction: N/A
Wigan Metropolitan Borough Council_32	HECA programme	Emission reductions	Other measure: Other measure	Implementation	Start date: 2014 Expected end date: 2030 Spatial scale: Whole Town or City Source affected: Commercial and residential sources Indicator: Cleaner air quality Target emissions reduction: N/A
Wigan Metropolitan Borough Council_33	Anti-Burning Campaign	Cleaner Air	Other measure: Other measure	Implementation	Start date: 2014 Expected end date: 2030 Spatial scale: Whole Town or City Source affected: Industry including heat and power production Indicator: Requires further investigation of impacts Target emissions reduction: N/A

Measure code	Description	Focus	Classification	Status	Other information
Wigan Metropolitan Borough Council_34	Promotion/Education/Awareness including:- (a) Cleaner Vehicles Campaign (b) In town without my car day (c) Bike Week (d) Eco Schools/Sustainable Schools Programme (e) Environmental Training (f) Energy Advice (g) School Travel Plan promotion (h) Liaison between Health and Transport practitioners (i) Dirty Diesel Campaign	AQ EDUCATION	Traffic planning and management: Encouragement of shift of transport modes	Preparation	Start date: 2014 Expected end date: 2030 Spatial scale: Whole Town or City Source affected: Transport Indicator: Requires further investigation of impacts Target emissions reduction: N/A
Wigan Metropolitan Borough Council_35	Carbon Management Programme (Wigan Council)	Reduce energy usage	Low emission fuels for stationary and mobile sources: Other measure	Preparation	Start date: 2014 Expected end date: 2030 Spatial scale: Whole Town or City Source affected: Commercial and residential sources Indicator: Requires further investigation of impacts Target emissions reduction: N/A
Wigan Metropolitan Borough Council_36	Carbon Management (cont) (Wigan and Leigh College)	N/A	Low emission fuels for stationary and mobile sources: Other measure	Implementation	Start date: 2014 Expected end date: 2030 Spatial scale: Whole Town or City Source affected: Commercial and residential sources Indicator: Requires further investigation of impacts Target emissions reduction: N/A
Wigan Metropolitan Borough Council_37	Carbon Management (cont) (Wigan and Leigh College)	N/A	Low emission fuels for stationary and mobile sources: Other measure	Implementation	Start date: 2014 Expected end date: 2030 Spatial scale: Whole Town or City Source affected: Commercial and residential sources Indicator: Requires further investigation of impacts Target emissions reduction: N/A